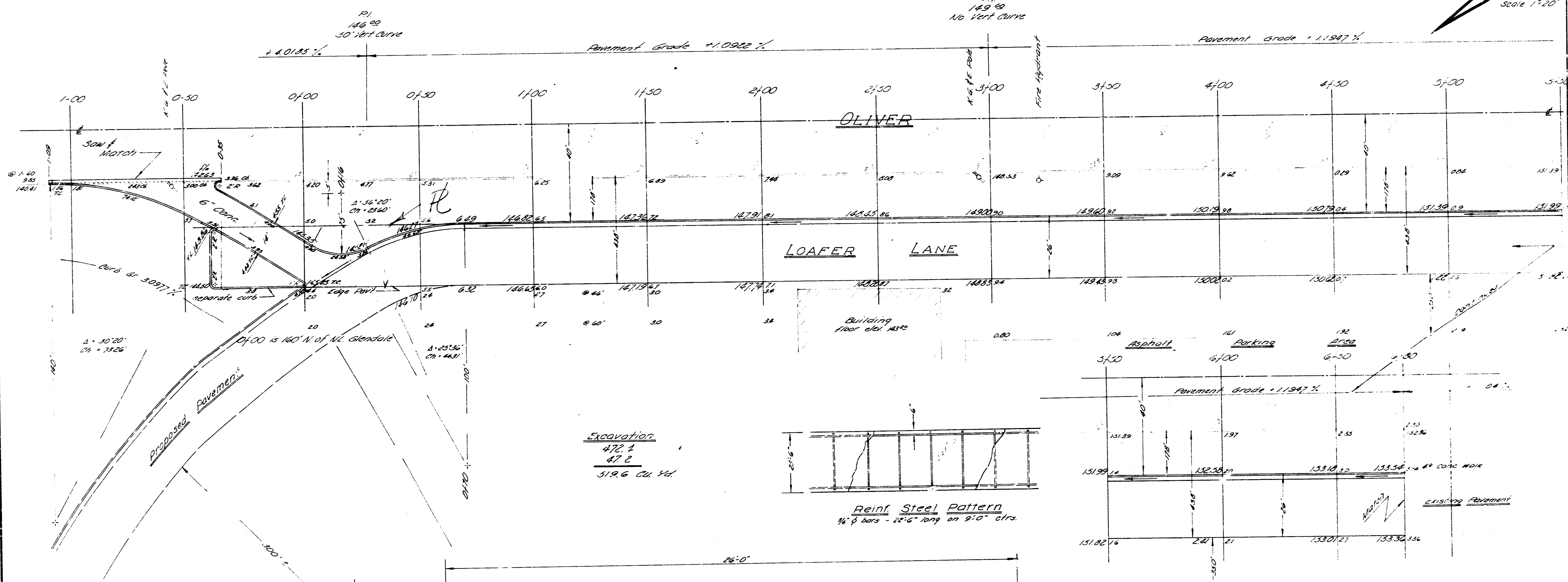
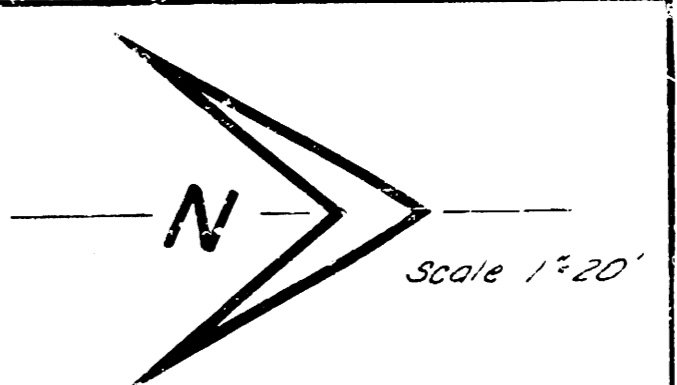
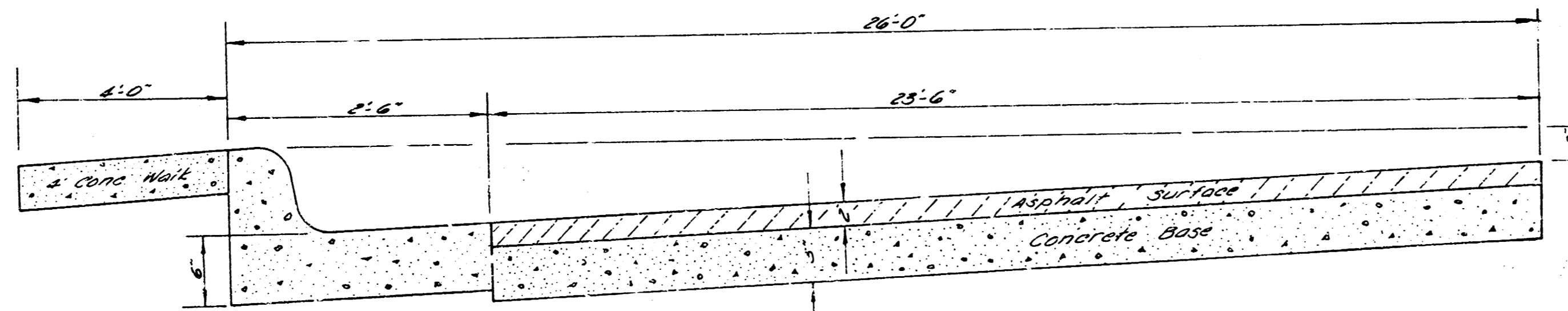
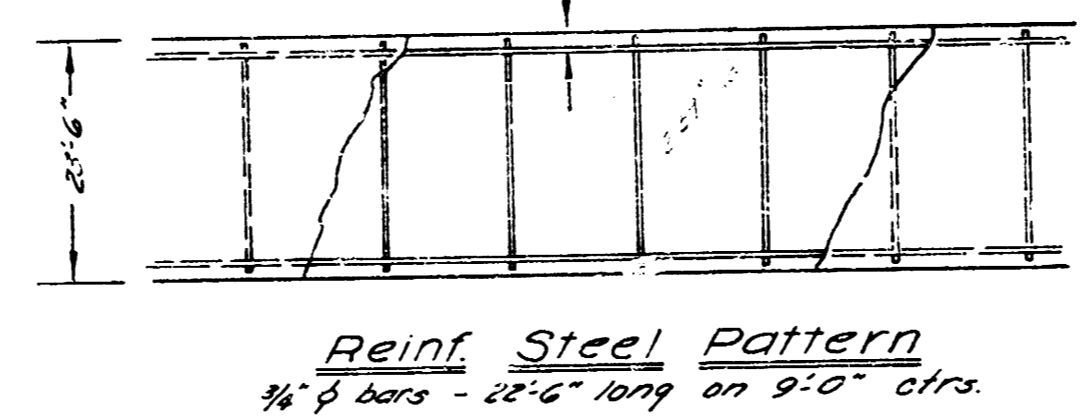


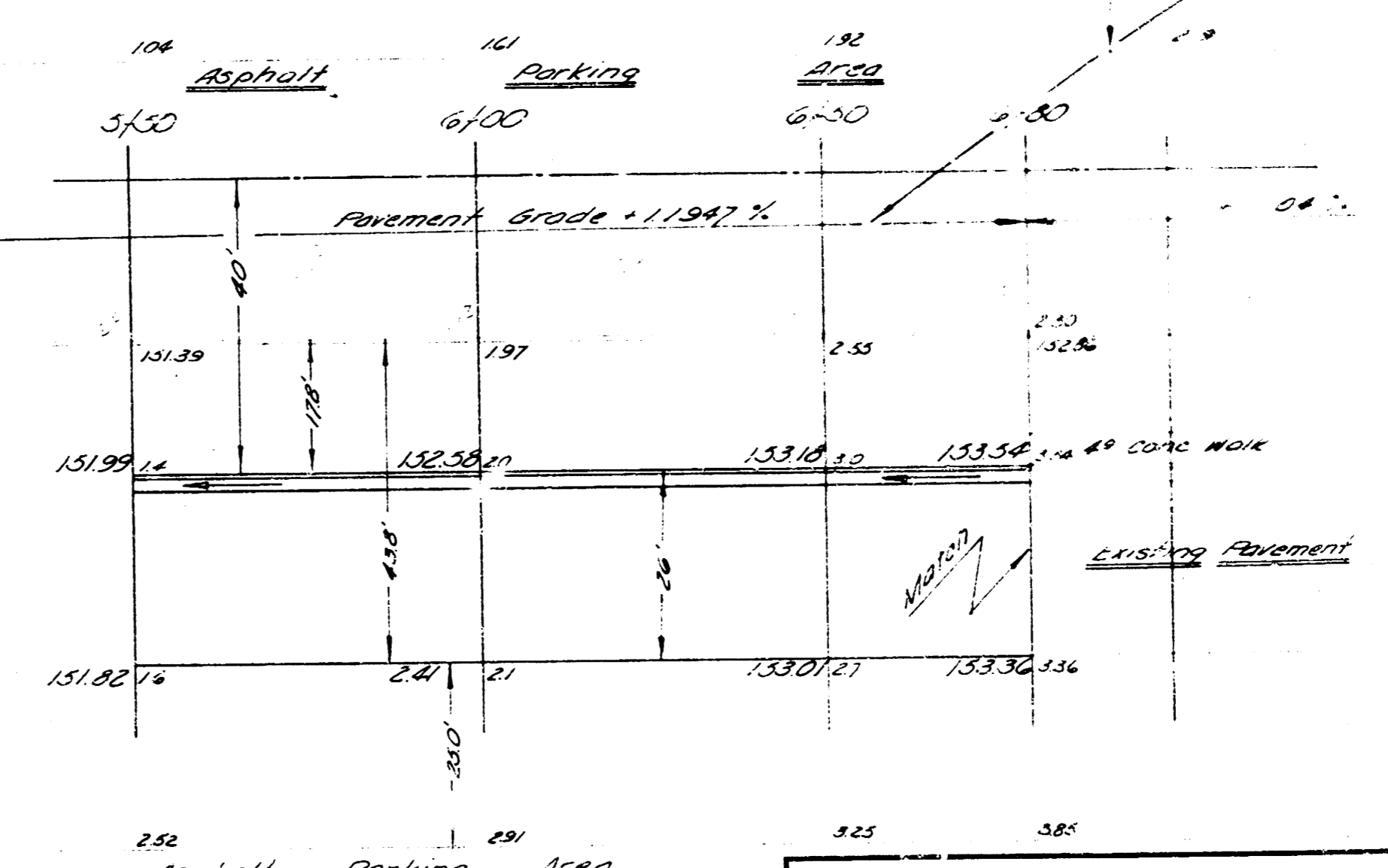
B.M. 156.34 10' NW cor. service station prop. S.E. cor. Oliver & Lincoln.
 B.M. 153.54 10' in Johnson, S end north E.S. Oliver @ Sta. 61.00
 B.M. 159.64 10' in 2002, N curb sidewalk of E.L. Oliver.



Excavation
 47' x
 47' x
 51.9' G. Ch. 4' d.



Typical Section
 Not to Scale



LOAFER LANE
 160' N of N.L. Stender to 100' S of S.L. Lincoln
 233-29-253 R.C.
 2\"/>

SEE SHEET 233-29-253 R.C. FOR DETAILS