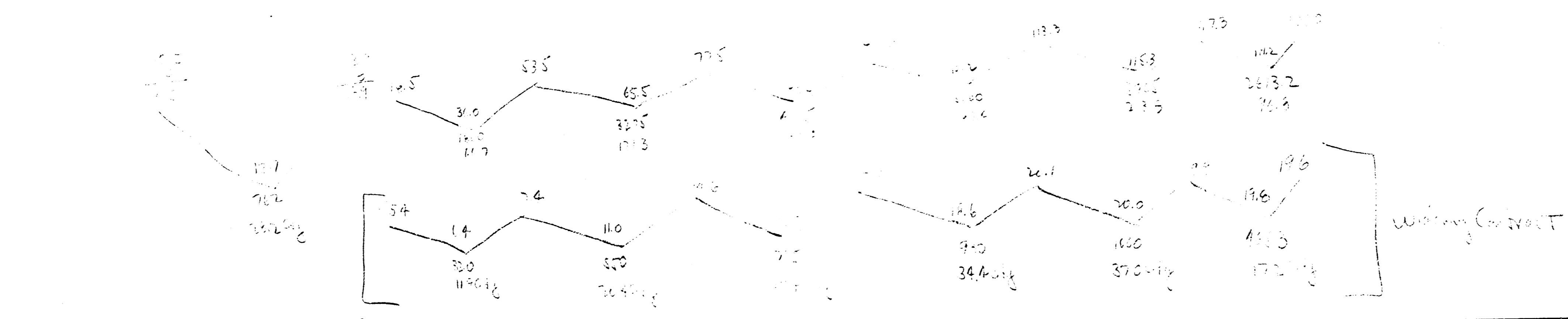
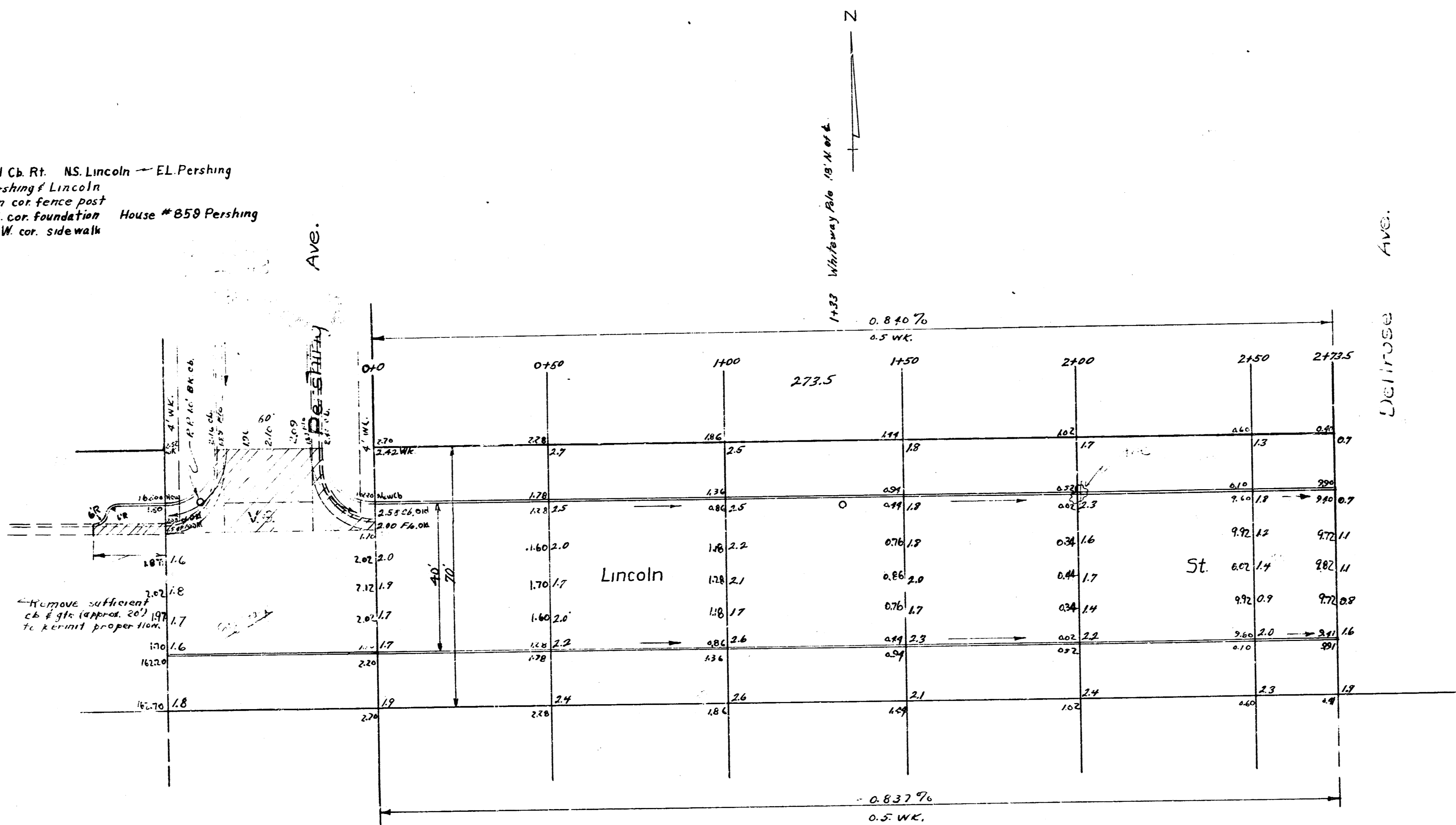


BM 16258 E. End Ch. Rt. NS. Lincoln — EL. Pershing
 NOTE: Ties to iron 4. Pershing / Lincoln
 1. 3867' NE. to iron cor. fence post
 2. 8137' NW. to S.E. cor. foundation House #858 Pershing
 3. 9128' S.S.E. to N.W. cor. sidewalk



LINCOLN ST.
 e.l. Pershing to w.l. Dellrose
 30' conc. f. cb. also widen to 40'
 City of Wichita, Kansas
 L. K. White City Engineer
 Dec. 1949 Project No. C-1949