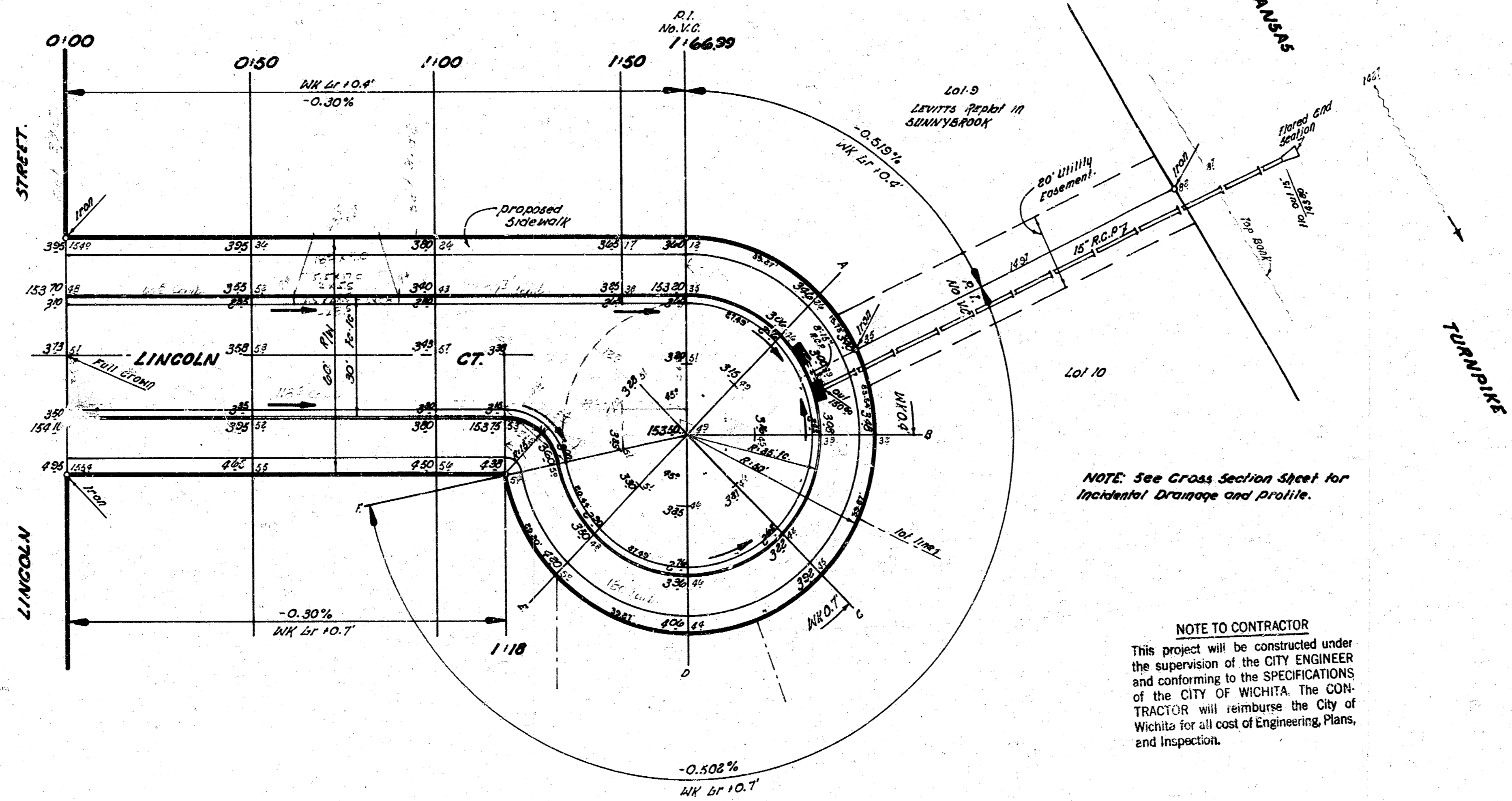


B.E. SMITH
 LICENSED
 CIVIL ENGINEER
 KANSAS



NOTE: See Cross Section Sheet for Incidental Drainage and Profile.

NOTE TO CONTRACTOR
 This project will be constructed under the supervision of the CITY ENGINEER and conforming to the SPECIFICATIONS of the CITY OF WICHITA. The CONTRACTOR will reimburse the City of Wichita for all cost of Engineering, Plans, and Inspection.

LIST OF QUANTITIES	
800' 3/4" dia	5" x 300' Base Pipe
464' 1/2" dia	Comb Curb & Sellar
832 cu yds	Excavation
464 cu yds	Comp. Fill
2' x 2' x 2'	Manholes
184' 1/2" dia	15" R.C.P. Flared End Section
2,900 lbs	Rein. Steel
464' 1/2" dia	Key Joint



LINCOLN COURT
 N.L. Lincoln Str. to 1101st Ave. S.W.
 26'-2'-30" Asph. Conc.
 City of Wichita, Kansas
 B.E. SMITH CITY ENGINEER
 DATE: July 1988 PRIVATE PROJECT