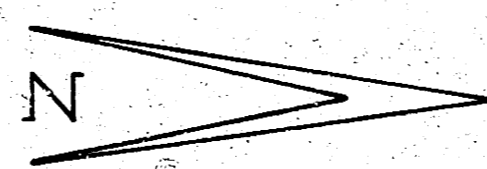


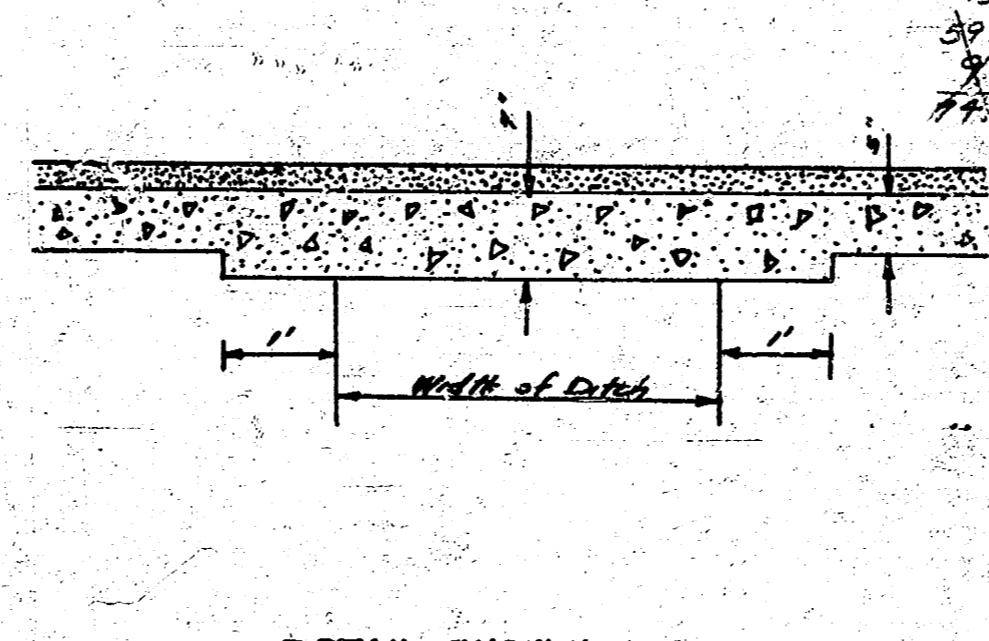
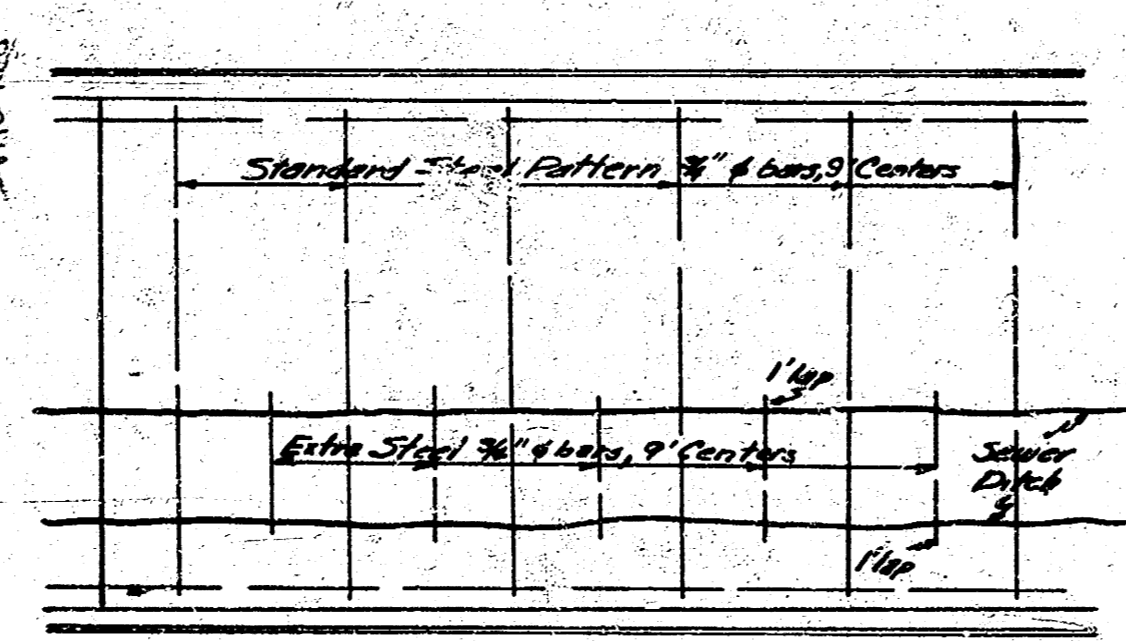
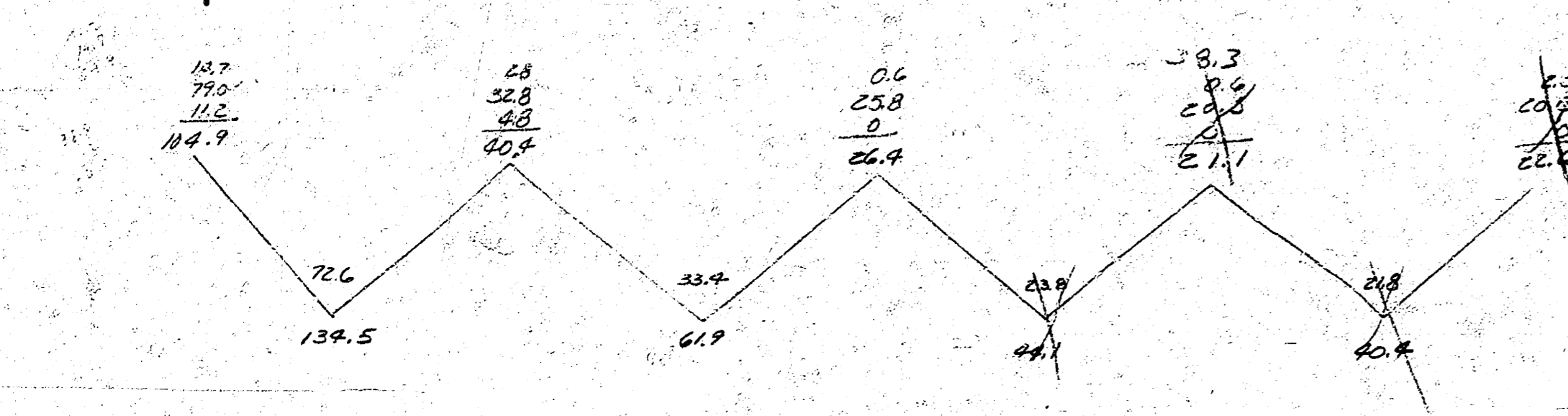
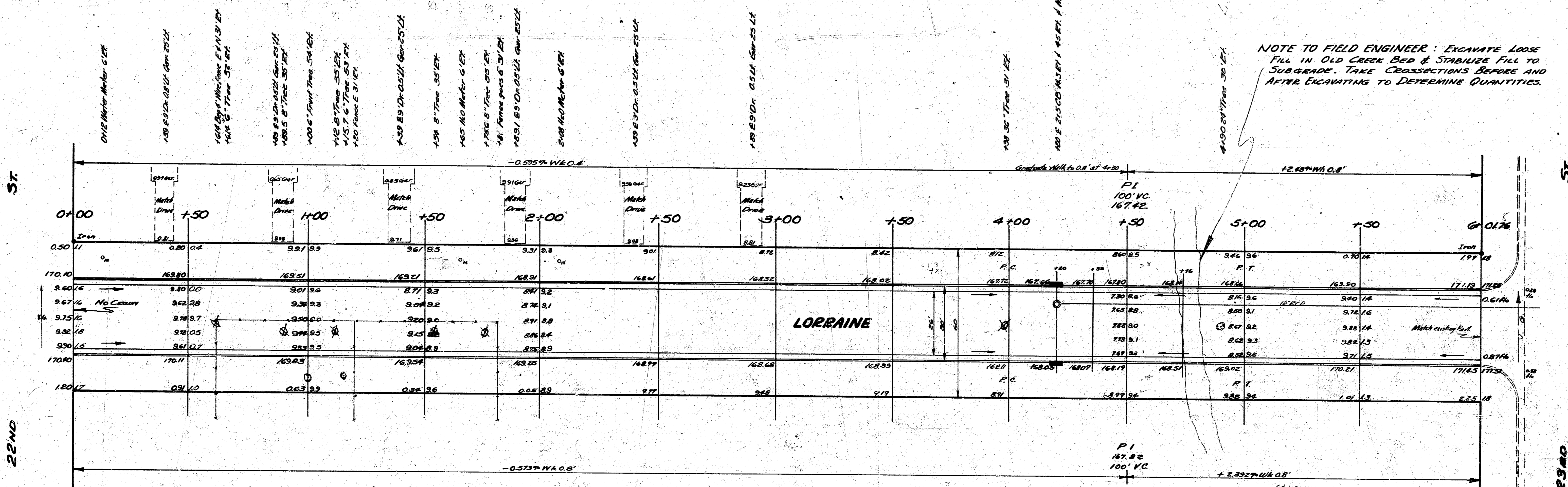
B.M. 152.83 SE Corner Conc. Pav. No. 2269 N. Yale Ave
 B.M. 163.59 60° Spike W.S. PINE Cor. 22nd & Chautauque
 B.M. 164.55 "9" in 1951 N. Curb 23rd, 100' E. EL. Chautauque N

Stationing on W.R.



Excavation
 Proj.
 147. 1253.0
 147. 1252.0
 1285.5 f.c.

NOTE TO FIELD ENGINEER: EXCAVATE LOOSE
 FILL IN OLD CREEK BED & STABILIZE FILL TO
 SUBGRADE. TAKE CROSSSECTIONS BEFORE AND
 AFTER EXCAVATING TO DETERMINE QUANTITIES.



1/2

LORRAINE
 N.L. 22ND TO SL 23RD
 26-2-30AC
 CITY OF WICHITA
 BESMITH CITY ENGINEER
 SEPT 1953 PROJ. No. C13-68

J.P.T.

Surveyed by B.R. W-2
 Plan 25
 Checked 27

This sheet
 5613 905