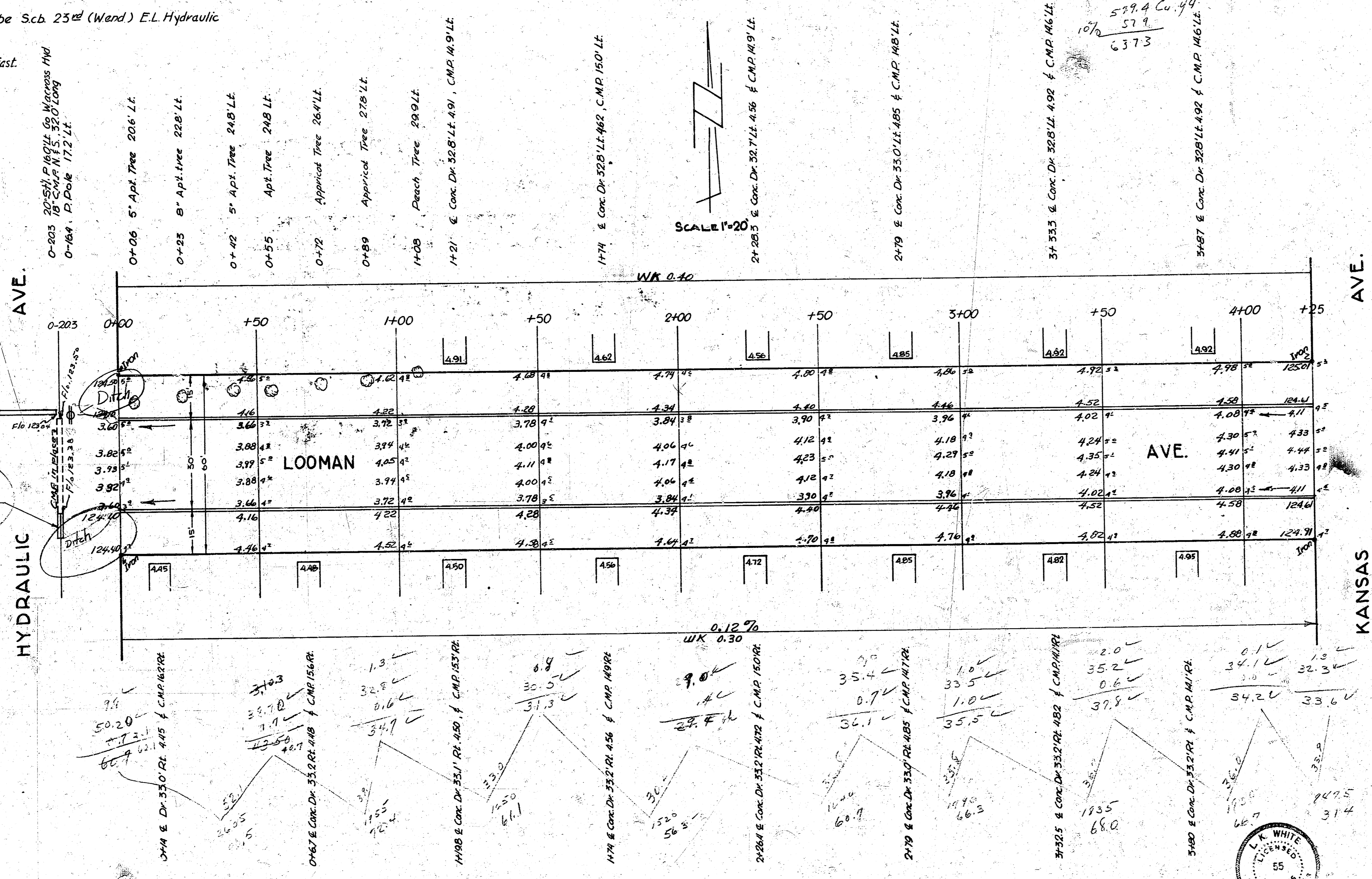
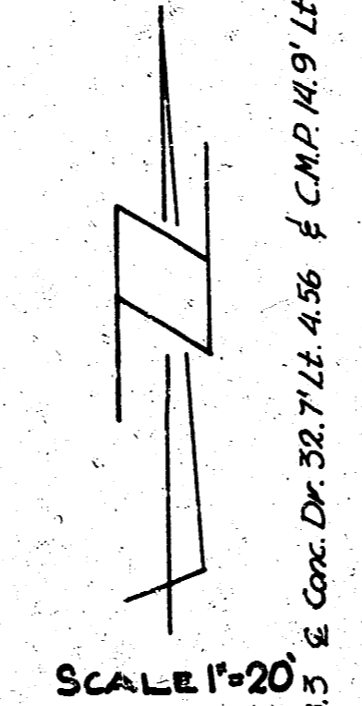


B.M. 123.32 0' in Globe Svb. 23rd (Wend) E.L. Hydraulic

NOTE: Stationing on E Looman going East.

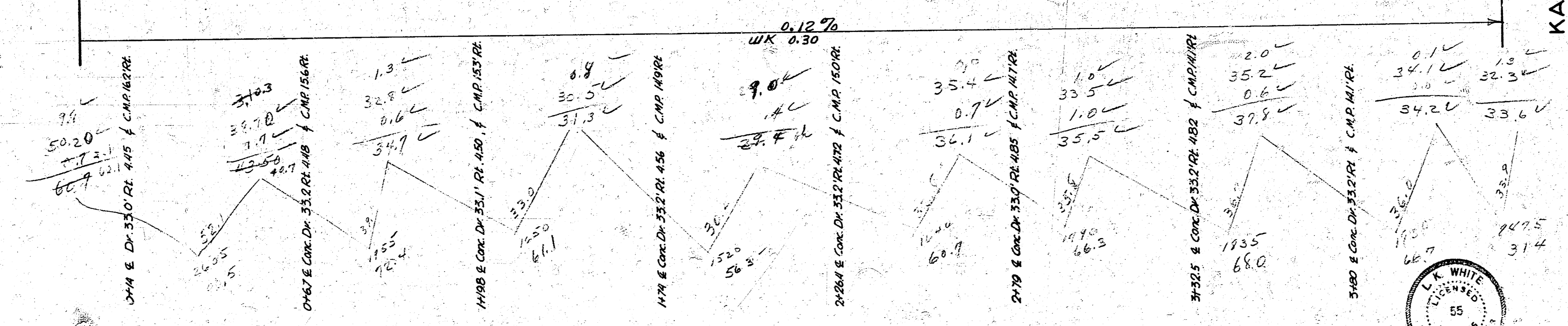


0+00 5' Apt. Tree 206 Lt.
0+25 8' Apt. Tree 228 Lt.
0+42 5' Apt. Tree 248 Lt.
0+55 Apt. Tree 248 Lt.
0+72 Appraisal Tree 264 Lt.
0+89 Appraisal Tree 278 Lt.
1+08 Peach Tree 290 Lt.
1+21 E. Conc. Dr. 35.8' R.I. 4.91, C.M.P. 14.9' Lt.
1+74 E. Conc. Dr. 35.2' R.I. 4.82, C.M.P. 15.0' Lt.
2+28 E. Conc. Dr. 33.7' R.I. 4.36, C.M.P. 14.9' Lt.
2+79 E. Conc. Dr. 33.0' R.I. 4.85, C.M.P. 14.8' Lt.
3+33 E. Conc. Dr. 32.8' R.I. 4.92, C.M.P. 14.6' Lt.
3+87 E. Conc. Dr. 32.8' R.I. 4.92, C.M.P. 14.6' Lt.



599.4 Cu. Yd.
10% 57.9
637.3

INSTALL 6-18 M.C.P.



LOOMAN AVE.
E.L. HYDRAULIC TO W.L. KANSAS
30' Conc. & Cb.
CITY OF WICHITA, KANSAS
L.K. WHITE CITY ENGINEER
SEPT. 1951 PROJ. NO. C 11-61

