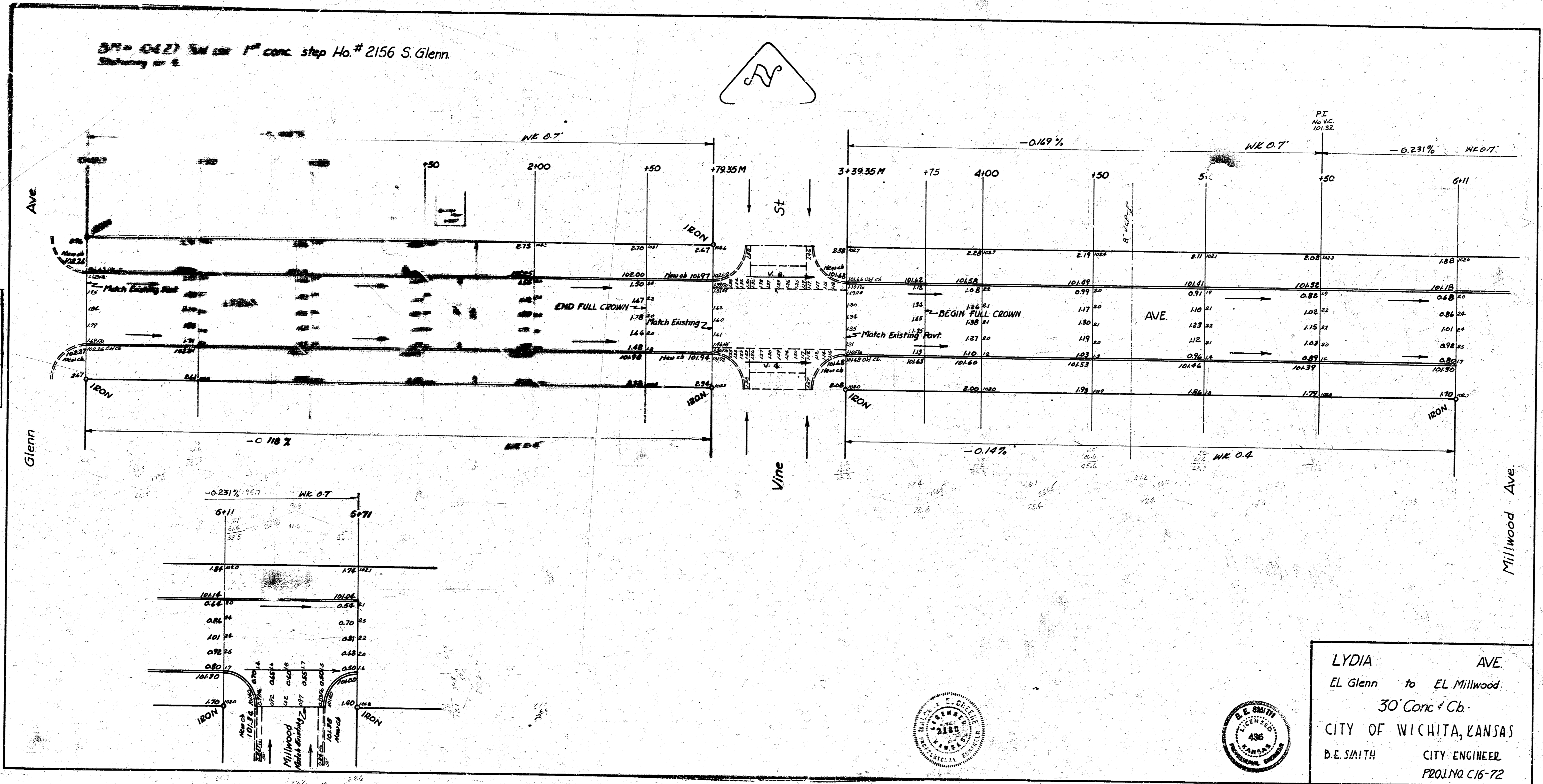
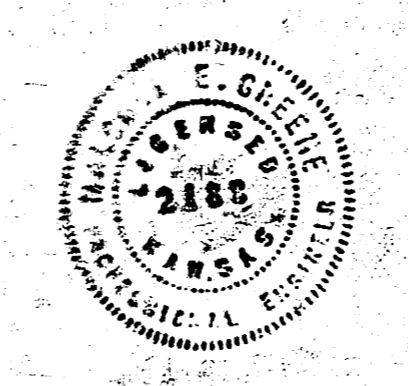
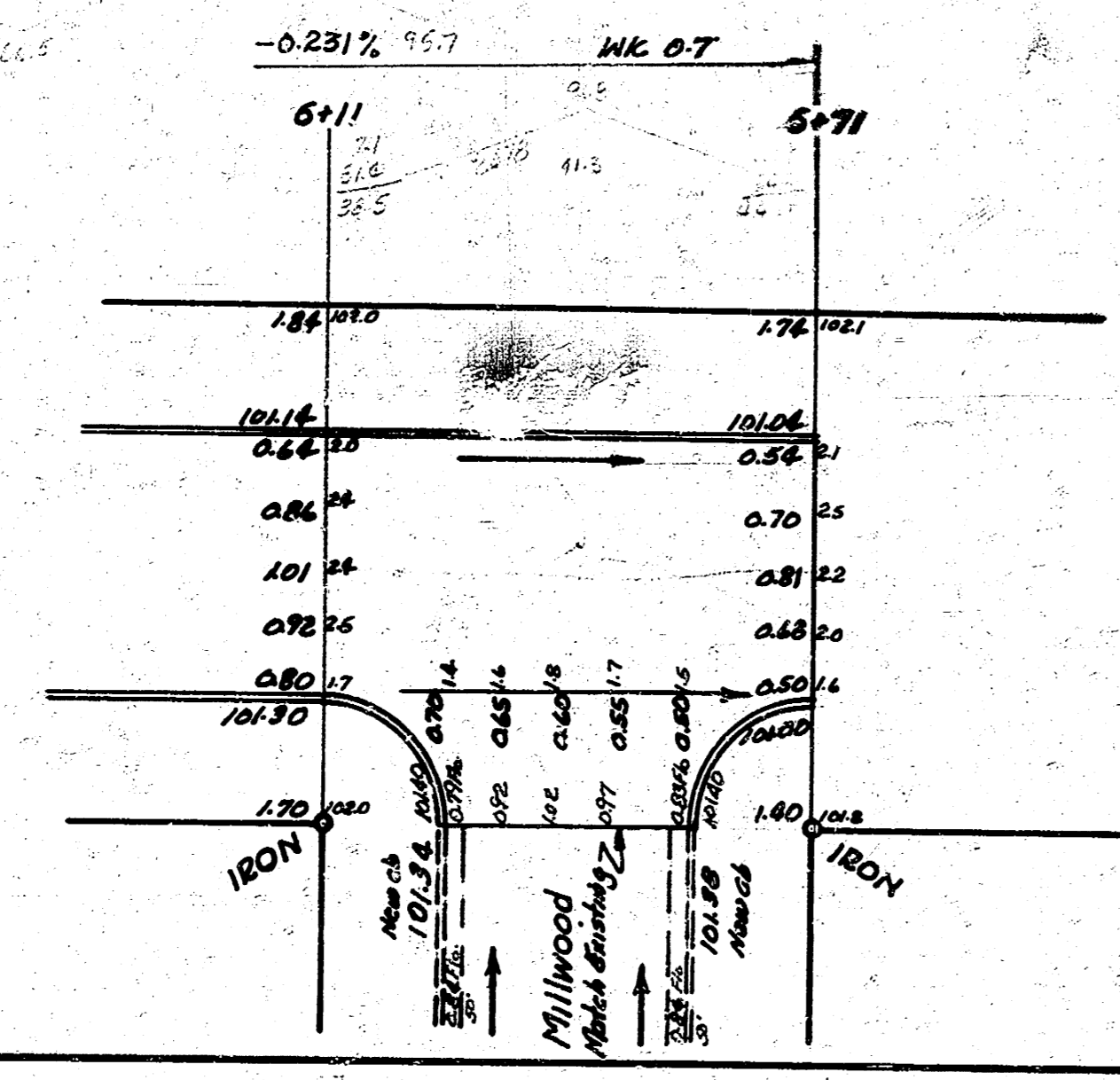


BM = 104.27 1st conc. step Ho. # 2156 S. Glenn  
 Stationing on R.



Surveyed by: [unclear]  
 Plan: [unclear]  
 Exc. [unclear]  
 Checked: [unclear]



LYDIA AVE.  
 EL Glenn to EL Millwood  
 30' Conc. Cb.  
 CITY OF WICHITA, KANSAS  
 B.E. SMITH CITY ENGINEER  
 PROJ. NO. C16-72