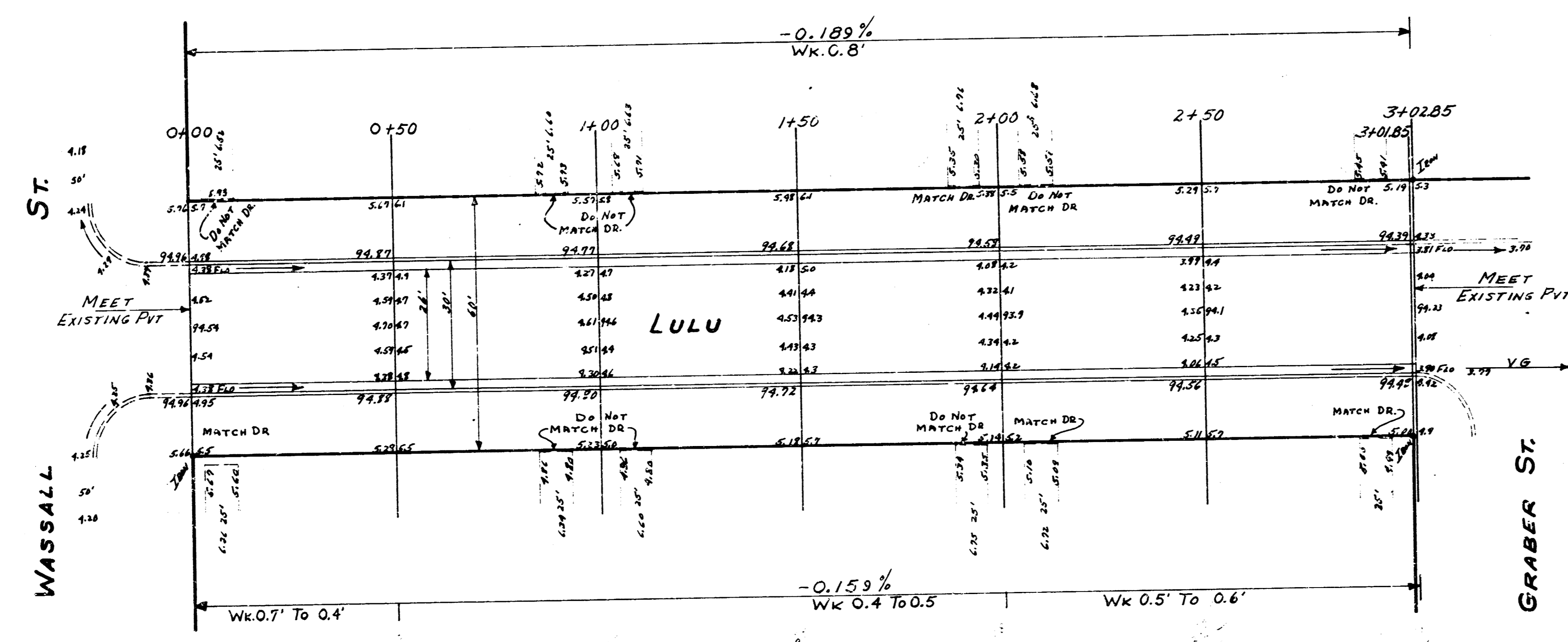
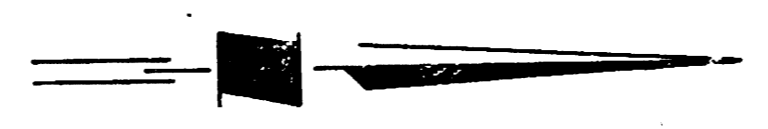


B.M. 36.69 S.E. COR. CONG. PARK HS #3719 LULU
 STATION 1/2 BASE LINE EAST FROM LINE



LULU
 N.L. WASSALL To S.L. GRABER
 26-2-30-AC
 CITY OF WICHITA KAN.
 B.E. SMITH CITY ENGINEER
 FEB. 1955 Proj. No. CI-400

