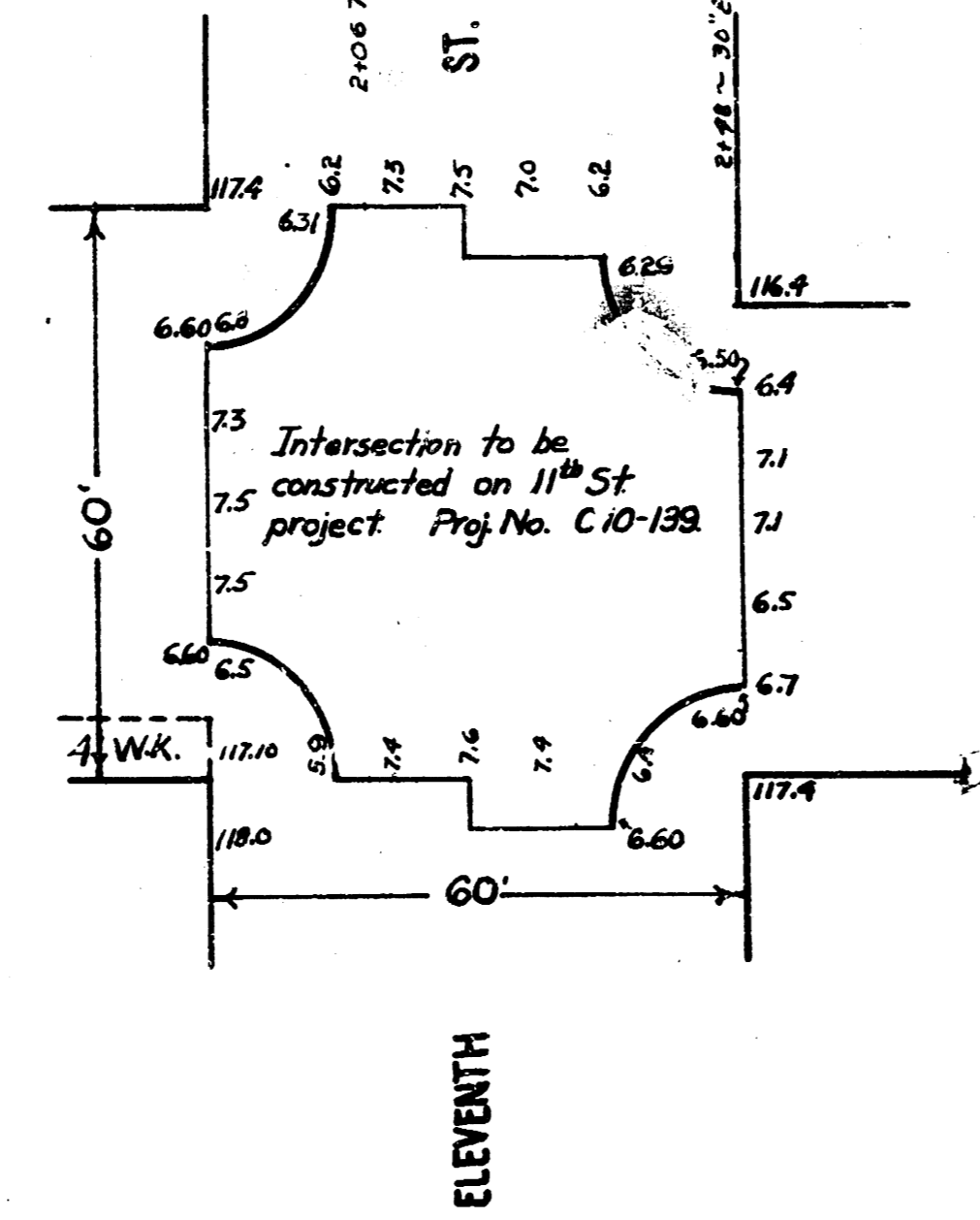


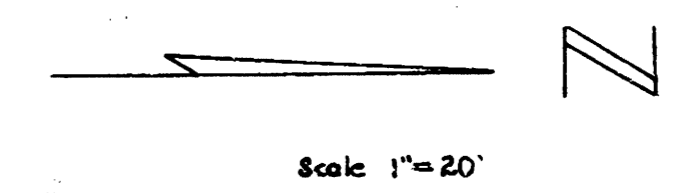
Excavation  
 City - 19.8  
 31.1  
 69.8  
 +10%  
 120.7  
 12.1  
 Total - 132.8 cu yds

NOTE: Cross-hatched area to be removed. Do not disturb curb and gutter. Replace with 6" concrete and warp section from full crown to no crown in the 20'.



Note: Work Grade Sta. 0+00 to 4+00 E side

B.M. 119.08 "M" in Mueller Pre plug SE corner 11th & Madison.  
 B.M. 116.75 "X" on E.Cb Madison 6' S. of S.L. 10th St.



**MADISON AVE.**  
 S.L. 10TH to N.L. 11TH  
 30' Conc. & Cb.  
 CITY OF WICHITA, KANSAS  
 L. K. WHITE CITY ENGINEER  
 NOV. 1950, PROJ. NO. C10-14-9