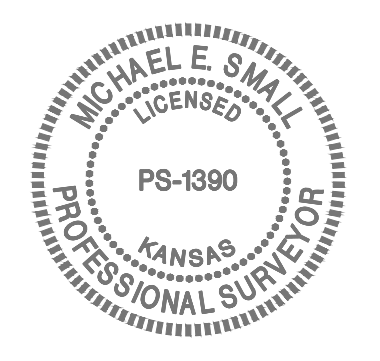
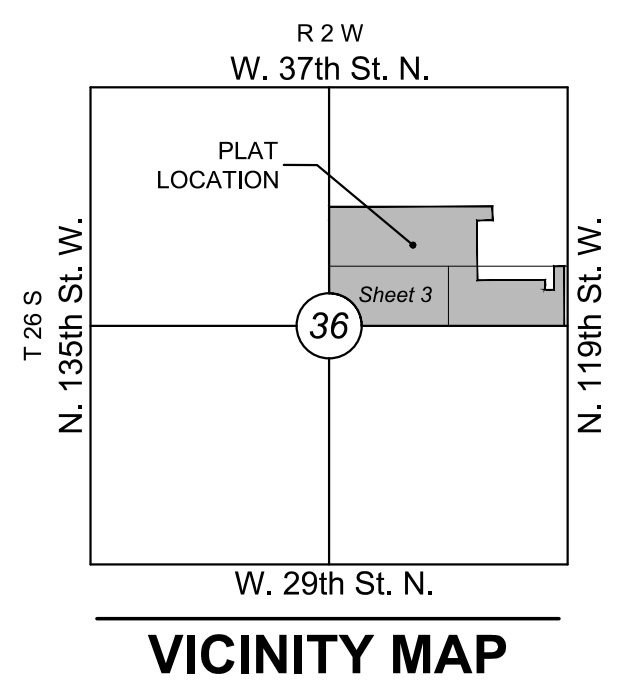


# FINAL PLAT

## ARVADA 2ND ADDITION

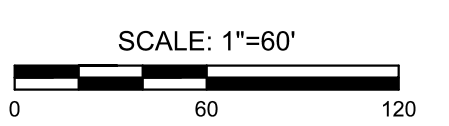
AN ADDITION TO MAIZE, SEDGWICK COUNTY, KANSAS  
a replat of a portion of Arvada Addition, lying in South Half of the Northeast Quarter of Section 36, Township 26 South, Range 2 West of the 6th Principal Meridian



### LEGEND

- Date of Survey: 11/18/2021
- △ = Section Corner Monument Found or Set
  - = Found Monument (see annotation for type)
  - = Set 5/8" rebar w/ MKEC CLS 39 id. cap
  - ⊕ = Benchmark
  - (M) = Measured
  - (P) = Platted
  - (CM) = Calculated from Measurement
  - (CP) = Calculated from Plat
  - (CD) = Calculated from Described
  - ① = Lot
  - ② = Block

LOTS inclusive	BLOCK	MINIMUM PAD ELEVATIONS LOWEST OPENINGS ELEVATION NAVD 88
31-32	4	1355.1
66-75	4	1355.1



The Horizontal Datum is based on the Kansas Coordinate System of 1983, NAD83 (2011), EPOCH: 2010.0000, South Zone and based on the "US Survey foot" definition. Coordinates shown have been modified to the ground using a combined adjustment scale factor of 1.0001200144. State Plane coordinates can be calculated by multiplying the shown values by 0.9998800000. Basis of Bearings for this plat is S00°10'00"E on the East line of the NE 1/4, Sec. 36, T26S, R2W, 6th P.M.

- ### BENCH MARKS
- BM#1 MAG nail set 40 feet south of power pole in southeast corner of property, in found square cut on south end of a weir wall. 45 feet north and 5 feet east of southeast corner of property.  
N: 1706536.856 E: 1607137.975  
Elev.=1357.74 NAVD88
  - BM#2 MAG nail set 15 feet west and 5 feet south of southwest wing wall of storm headwall on west side of 119th Street West.  
N: 1707065.924 E: 1607144.837  
Elev.=1356.78 NAVD88



\*CONTINUED ON PAGE 2\*

\*CONTINUED ON PAGE 4\*