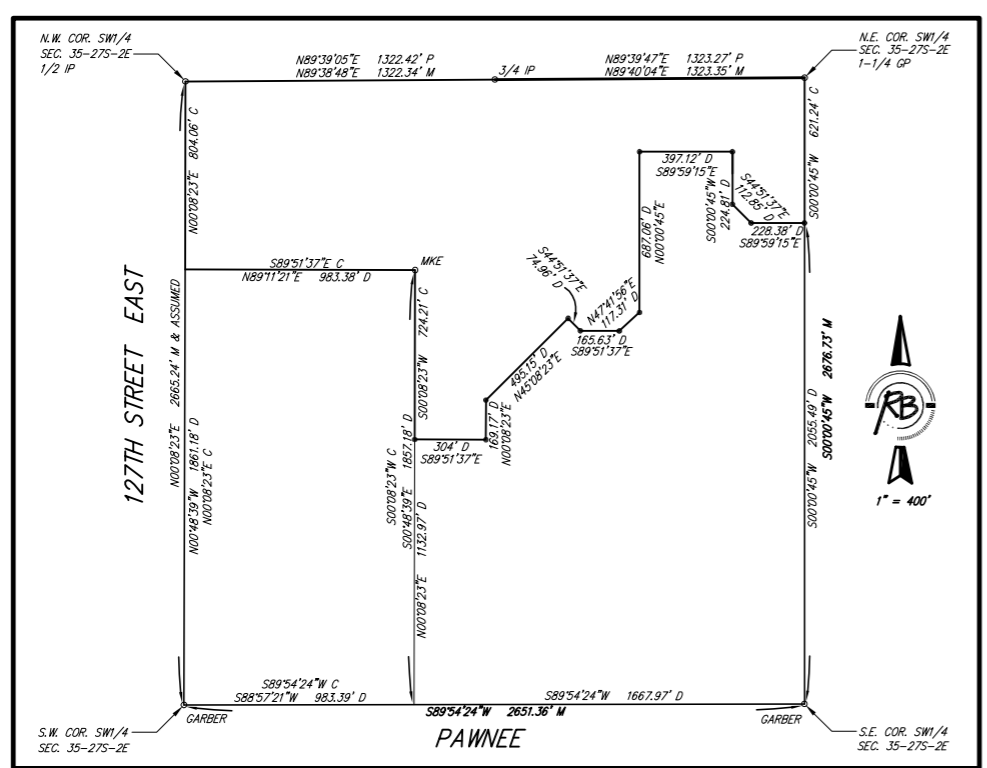
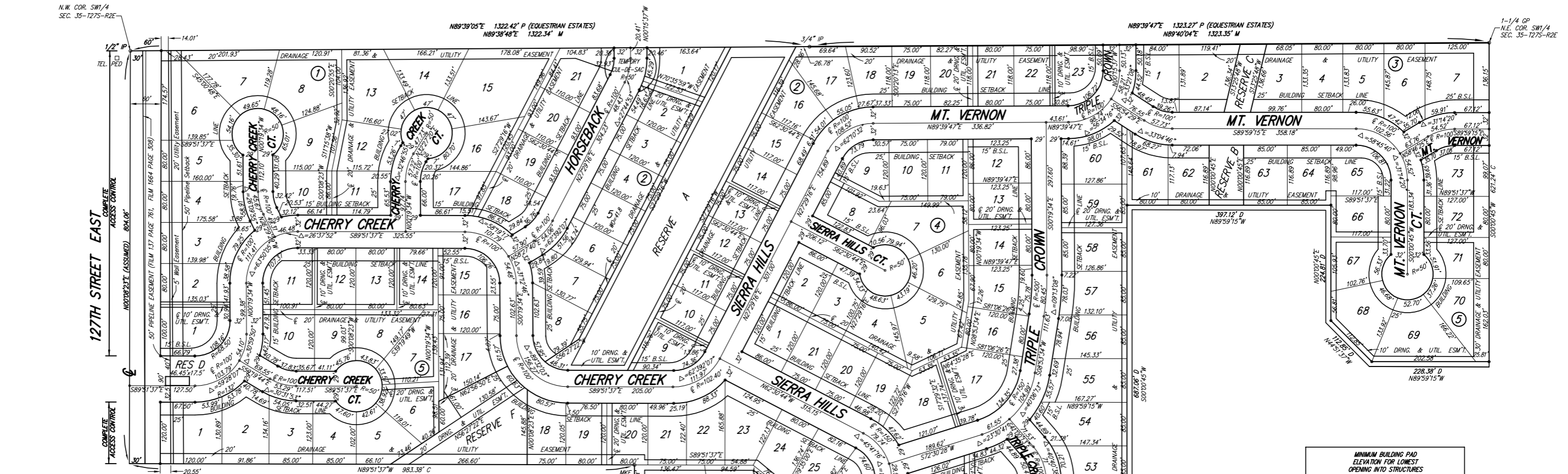


SIERRA HILLS

An Addition to Wichita, Sedgwick County, Kansas



MINIMUM BUILDING PAD ELEVATION FOR LOWEST OPENING INTO STRUCTURES		
BLOCK	LOT NO.	ELEVATION (N.G.V.D.)
2	1, 2, 3, 4, 13, 14, 15, 16, 17	1338.5
	5, 6, 7, 8	1341.0
5	40, 41, 42, 43, 44	1344.0
	54, 55, 56, 57, 58, 59, 61, 62, 63, 64, 65, 66, 67, 68	1335.5

BENCH MARK #1: R.R. SPIKE 32.39' E. & 40.87' N. OF THE CENTERLINE INTERSECTION PAWNEE AVENUE & 127TH STREET EAST
ELEV.=1348.62 (NGVD) = 161.22 (CITY DATUM)

BENCH MARK #2: SRB BRASS DISC 1008.17' E. & 55.63' N. OF THE CENTERLINE INTERSECTION PAWNEE AVENUE & 127TH STREET EAST
ELEV.=1336.63 (NGVD) = 149.23 (CITY DATUM)

BENCH MARK #3: SRB BRASS DISC 55.45' E. & 5.13' S. OF THE N.W. COR., SW1/4, SEC. 35, 27S, R2E
ELEV.=1348.35 (NGVD) = 160.95 (CITY DATUM)



P = PLATTED
M = MEASURED
C = CALCULATED
D = DESCRIBED

SURVEY MARKER LEGEND

- 1-1/4 GP = 1-1/4" GALVANIZED PIPE (FOUND)
- 1/2 IP = 1/2" IRON PIPE (FOUND)
- 3/4 IP = 3/4" IRON PIPE (FOUND)
- MKE = 5/8" REBAR W/MKE CAP (FOUND)
- GARBER = 5/8" REBAR W/GARBER CAP (FOUND)
- = 5/8" REBAR W/R&B CAP (SET)

SIERRA HILLS ADDITION FINAL PLAT WICHITA, KANSAS

Ruggles & Bohm, P.A.
Engineering, Surveying, Land Planning

924 North Main
Wichita, Kansas 67203
www.rbkansas.com

(316) 264-8008
(316) 264-4621 fax
E-mail: info@rbkansas.com

DRAWING FILE Sanitary {Key Map}	PROJECT NUMBER 468-83584	DATE July 10, 2006
------------------------------------	-----------------------------	-----------------------

RUGGLES & BOHM
WICHITA, KANSAS

DESIGN: KWL
DRAWN: MLP
REVIEW: BHE
UTILITY: BHE
DATE: July 10, 2006