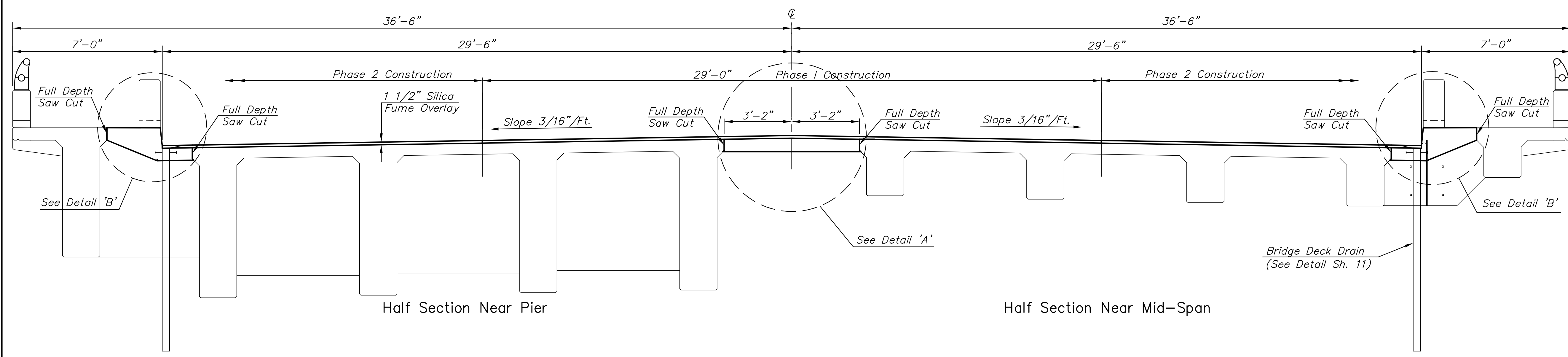
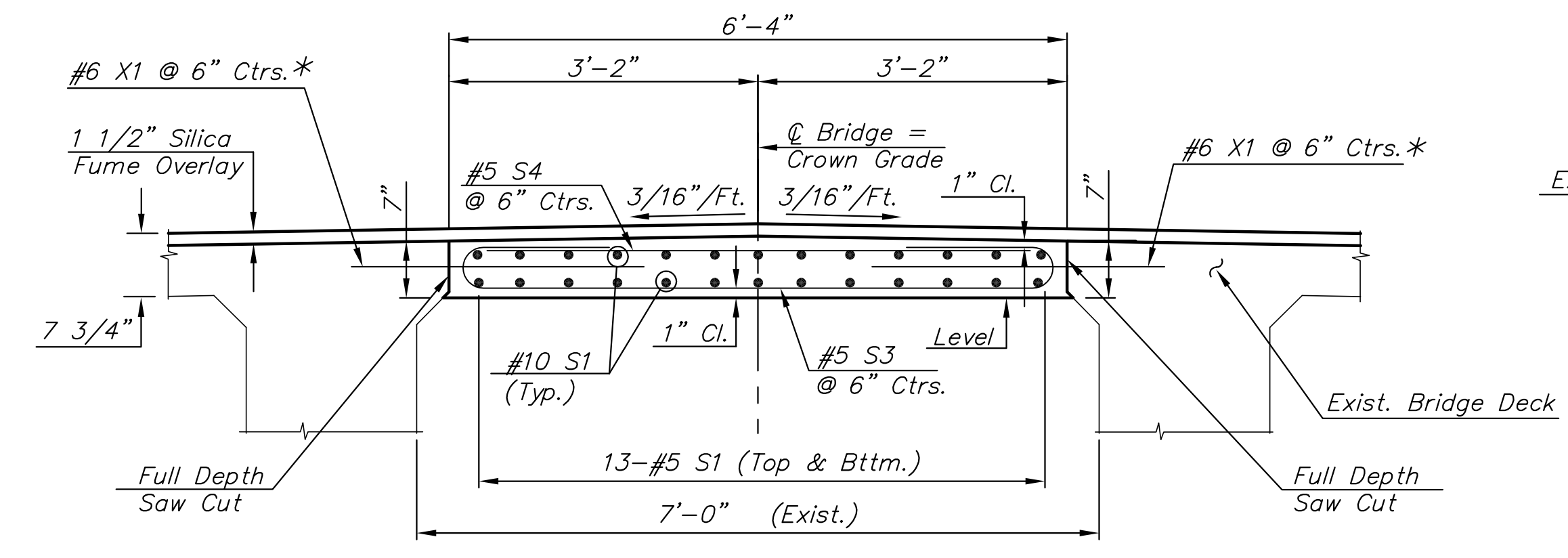


| | | | | |
|--------|--------------|------|-----------|--------------|
| STATE | PROJECT NO. | YEAR | SHEET NO. | TOTAL SHEETS |
| KANSAS | 87 N-0362-01 | 2007 | 12 | 48 |

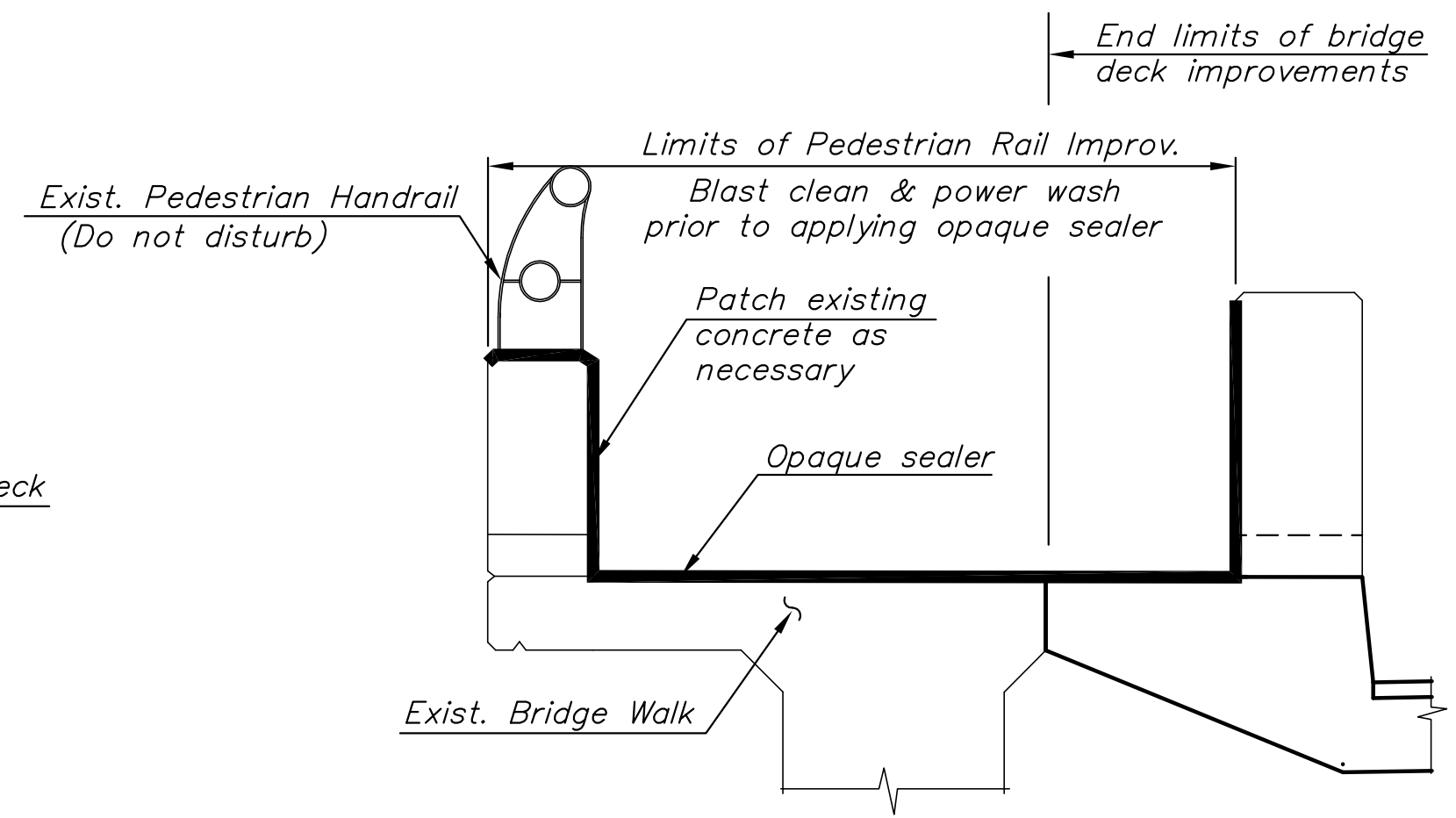


NOTE: Verify all existing dimensions prior to construction.

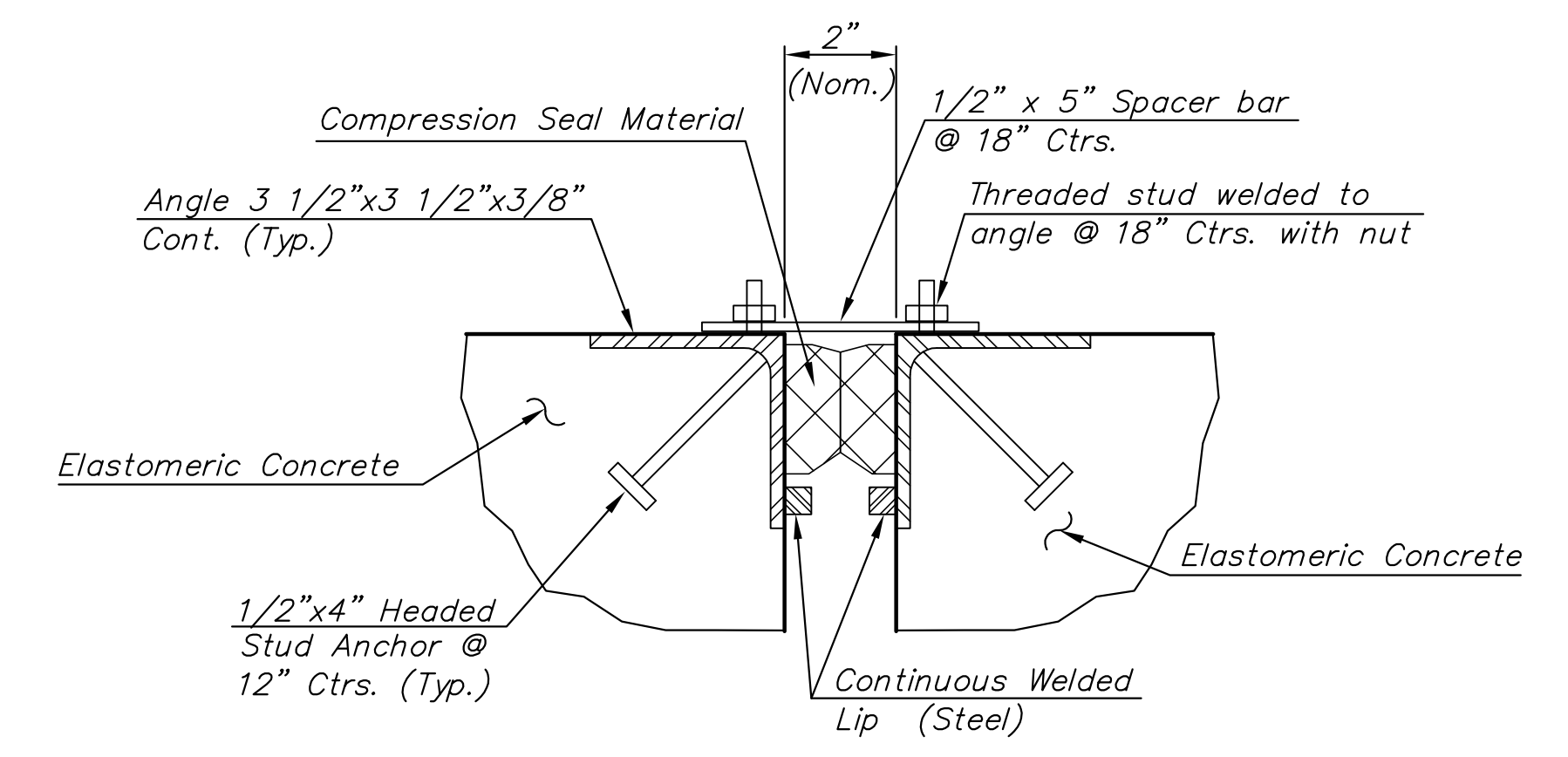
BRIDGE DECK SECTION



DETAIL 'A'
(Phase 1 Construction)

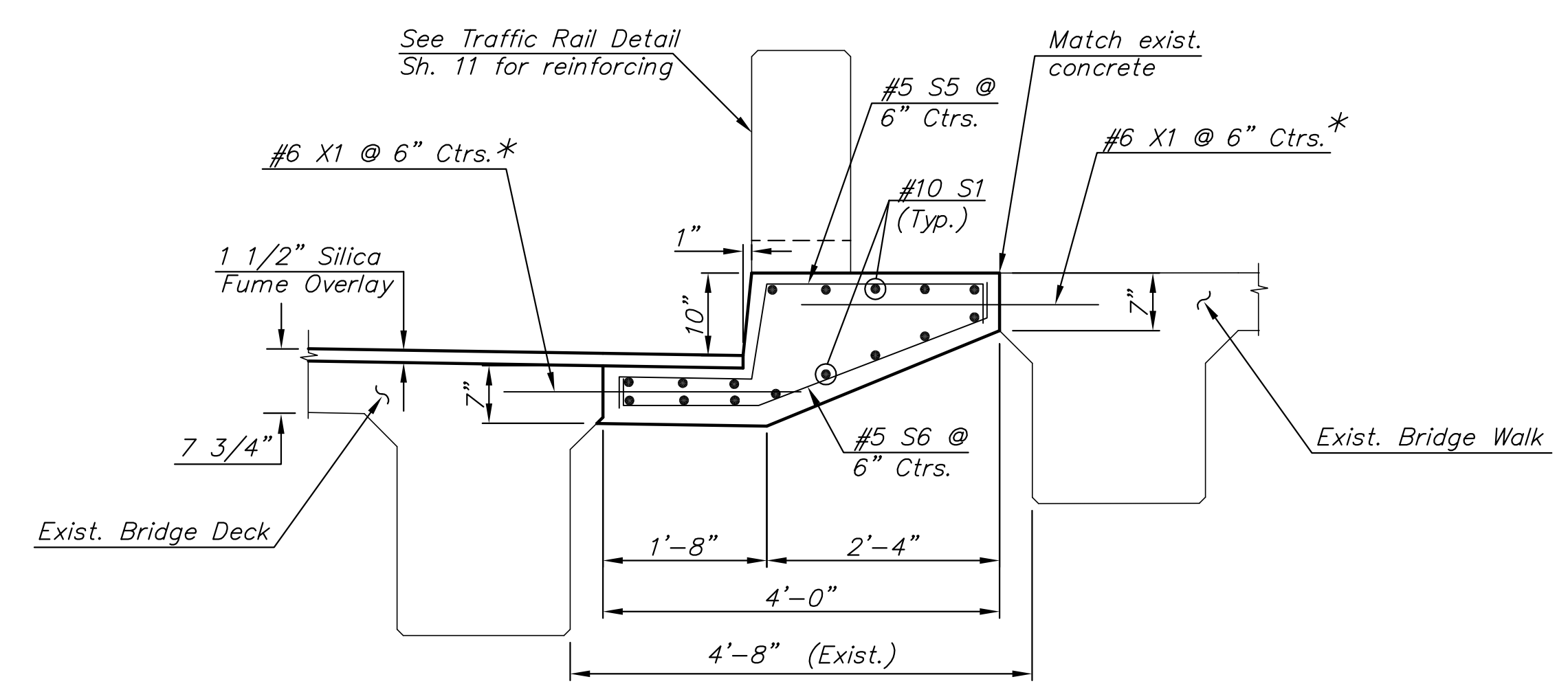


PEDESTRIAN RAIL IMPROVEMENTS

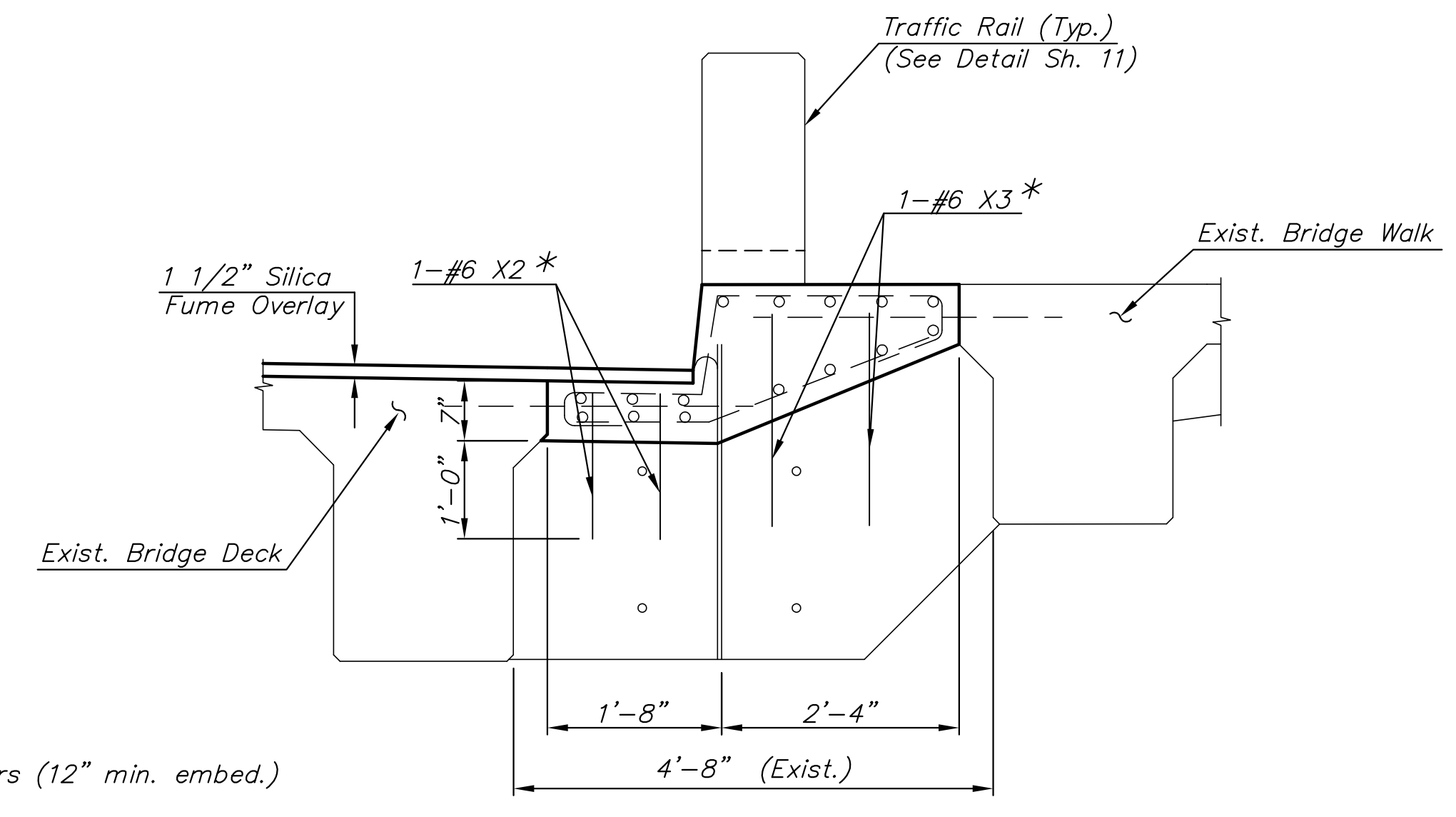


EXPANSION JOINT DETAIL

1. Welds shall meet requirements per AWS D1.1
2. Angles for joint shall be installed using temporary spacer bars at 18" ctrs. prior to casting elastomeric concrete.
3. Joint shall be temporarily filled with foam elastic material during construction.
4. Compression seal material shall be installed continuously at completion of Phase 2 construction. Removal of temporary spacer bars shall be subsidiary.
5. Joint shall be in accordance with Section 719 of the 2007 KDOT Standard Specifications. Provide shop drawings of all joint materials prior to installation.
6. Elastomeric concrete shall be in accordance with Section 718 of the 2007 KDOT Standard Specifications.
7. Angles, studs, temporary spacer bar and elastomeric concrete are subsidiary to "Expansion Joint".
8. Install both connected angles of expansion joint simultaneously. This is required to ensure joint alignment.



DETAIL 'B'
(Phase 2 Construction)



DETAIL 'B'
(Showing Diaphragm Reinforcing)

* Drill & grout #6 X bars (12" min. embed.) Paid as each.

J:\Civil\04223\dwg\BRIDGE\04223SP2.dwg 09/17/2007 11:15:52 AM CST
 KANSAS DEPARTMENT OF TRANSPORTATION
SUPERSTRUCTURE IMPROVEMENTS
EXPANSION JOINT DETAIL
 PROJ. NO. 87 N-0362-01 SEDGWICK CO.
 MKEC ENGINEERING CONSULTANTS, INC.
 WICHITA, KANSAS
 DESIGNED BY: JAG CHECKED BY: KJS
 DRAWN BY: DPG DATE: 4/23/07 SHEET 12 OF 48