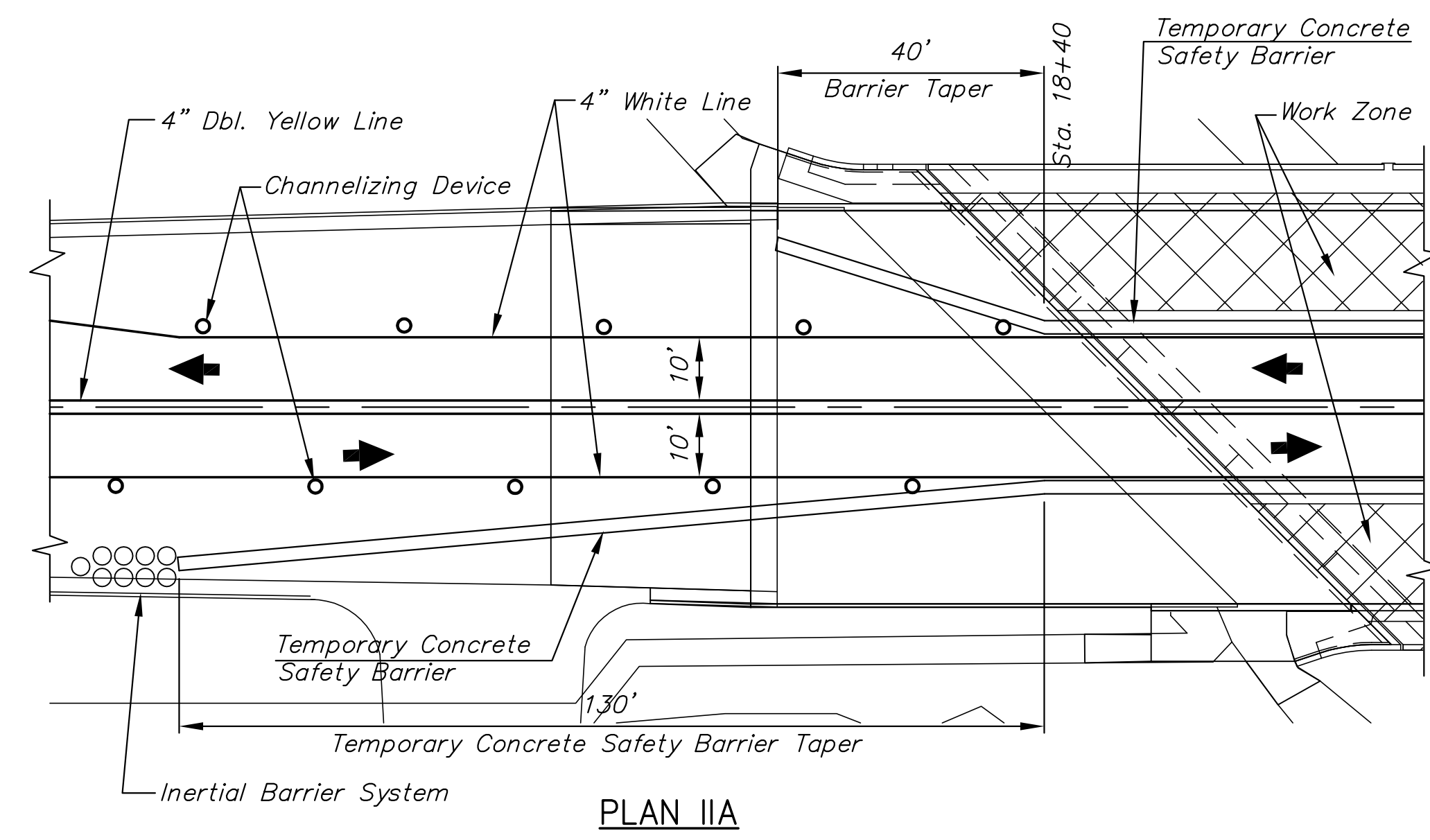
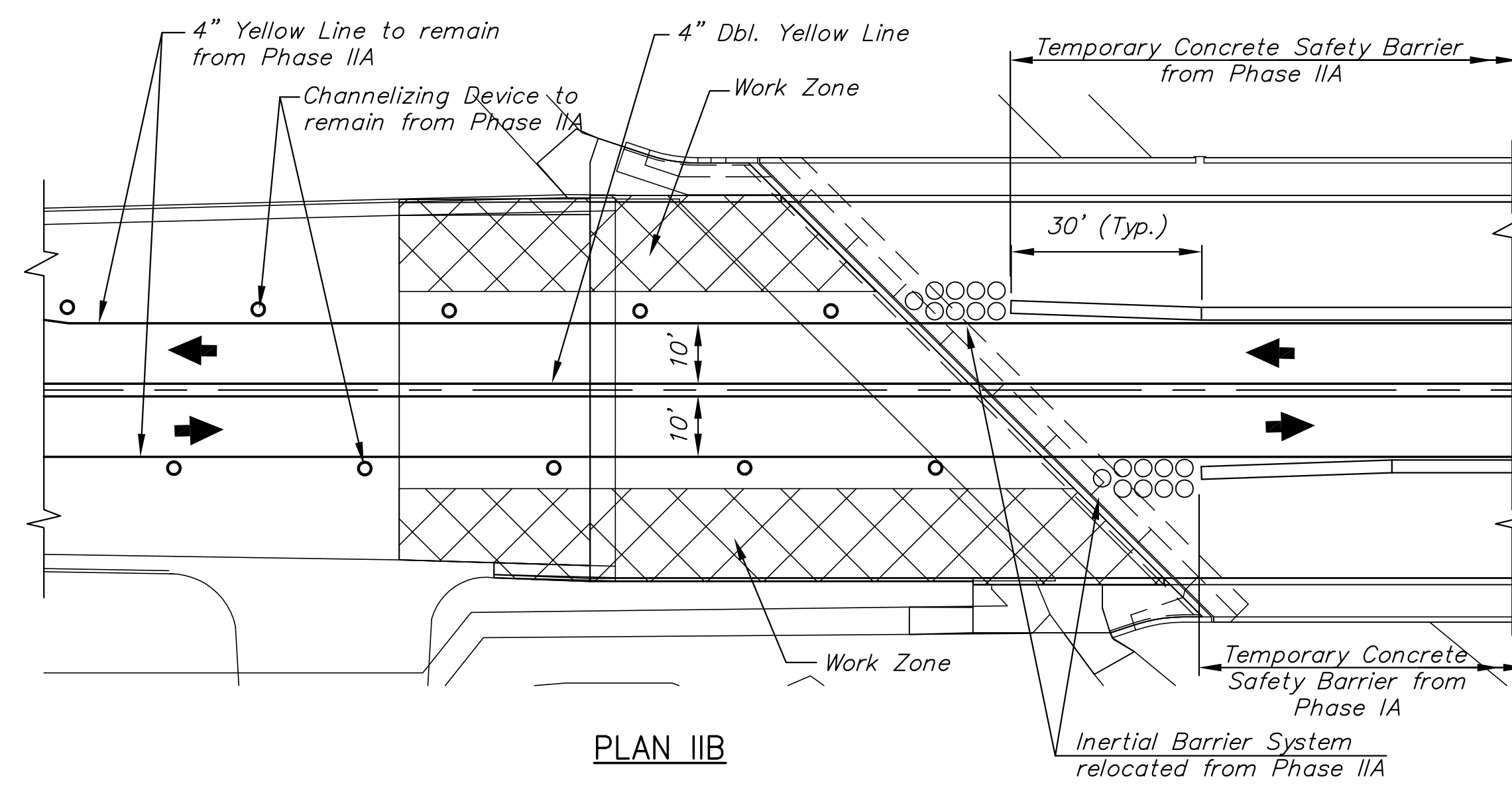


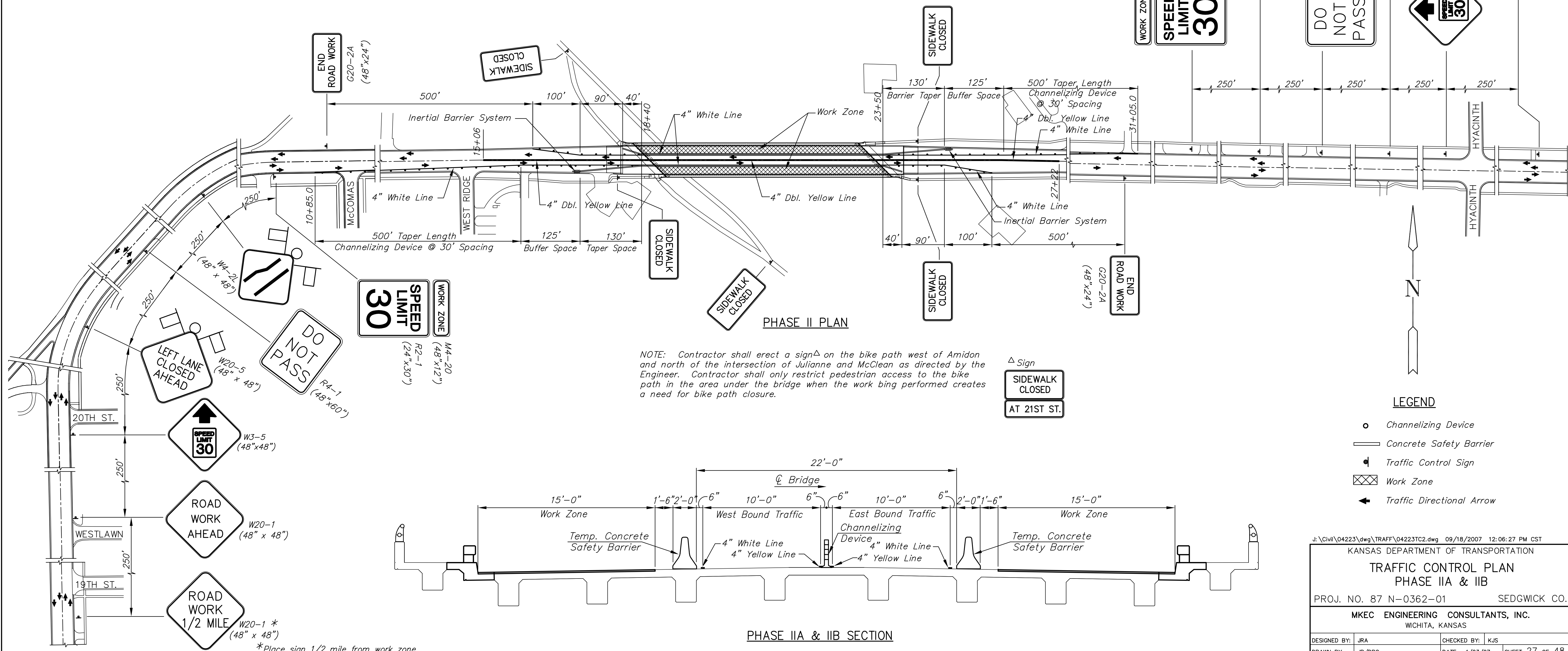
STATE	PROJECT NO.	YEAR	SHEET NO.	TOTAL SHEETS
KANSAS	87 N-0362-01	2007	27	48



PLAN IIA



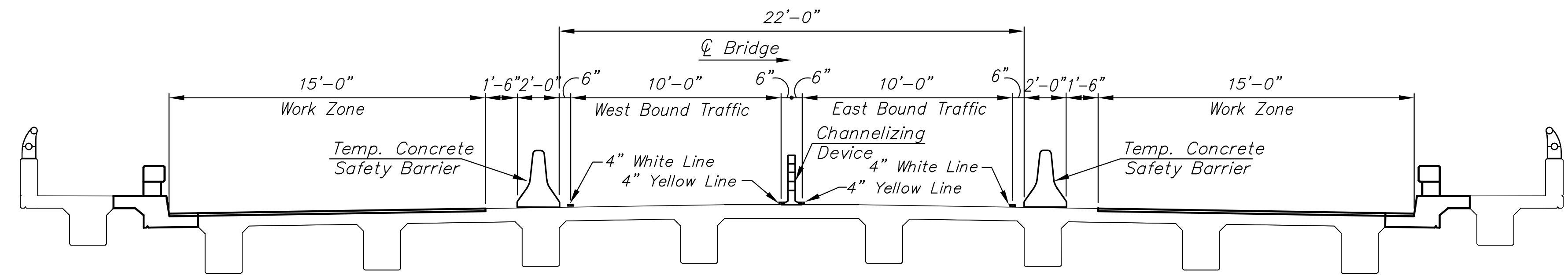
PLAN IIB



PHASE II PLAN

NOTE: Contractor shall erect a sign on the bike path west of Amidon and north of the intersection of Julianne and McClean as directed by the Engineer. Contractor shall only restrict pedestrian access to the bike path in the area under the bridge when the work being performed creates a need for bike path closure.

△ Sign  
 SIDWALK CLOSED  
 AT 21ST ST.



PHASE IIA & IIB SECTION

LEGEND

- Channelizing Device
- Concrete Safety Barrier
- ▲ Traffic Control Sign
- ▨ Work Zone
- ← Traffic Directional Arrow

J:\Civil\04223\dwg\TRAFF\04223TC2.dwg 09/18/2007 12:06:27 PM CST  
 KANSAS DEPARTMENT OF TRANSPORTATION  
**TRAFFIC CONTROL PLAN**  
 PHASE IIA & IIB  
 PROJ. NO. 87 N-0362-01 SEDGWICK CO.  
 MKEC ENGINEERING CONSULTANTS, INC.  
 WICHITA, KANSAS

DESIGNED BY: JRA	CHECKED BY: KJS
DRAWN BY: JB/DPG	DATE: 4/23/07

SHEET 27 OF 48

\*Place sign 1/2 mile from work zone