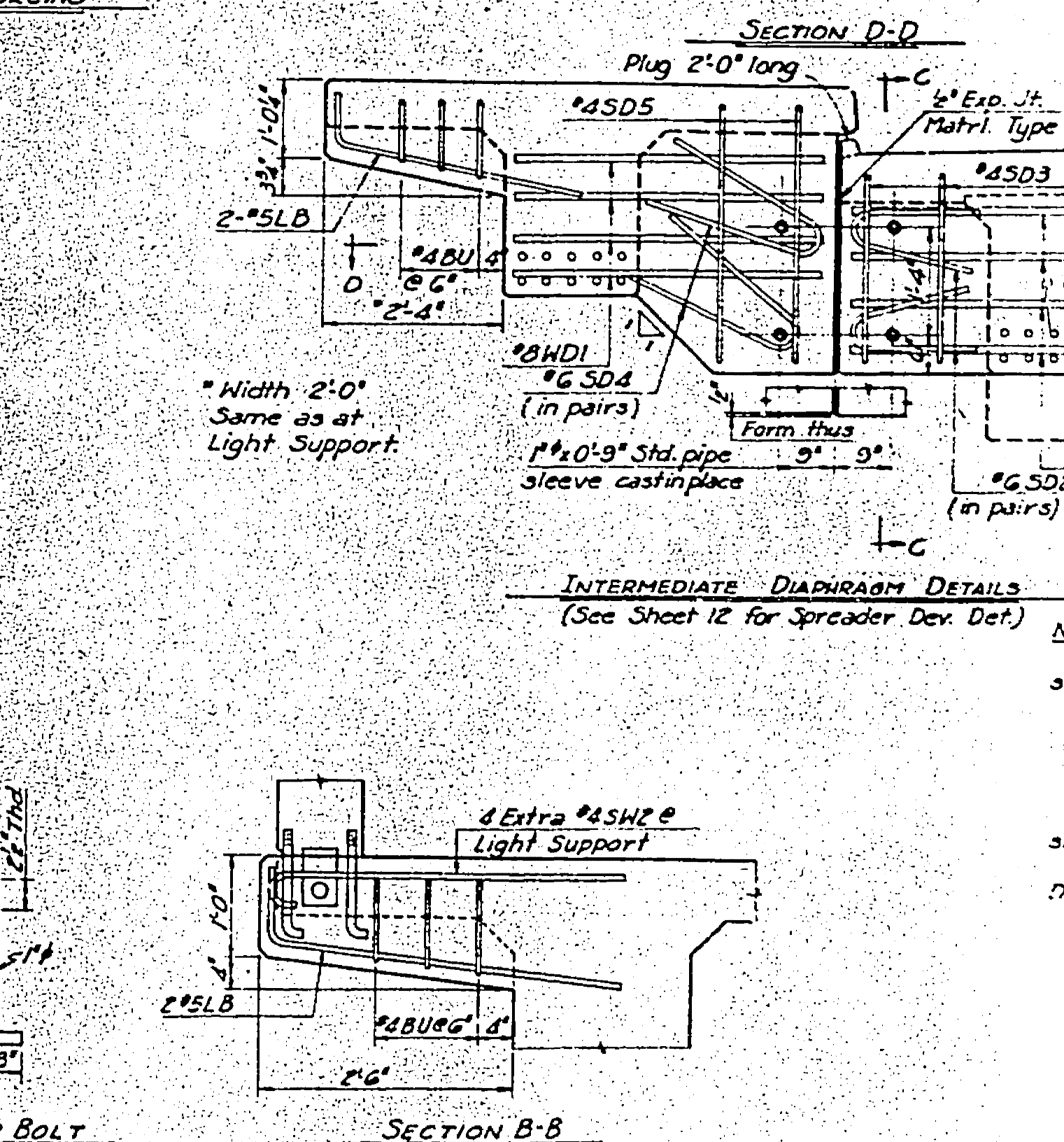
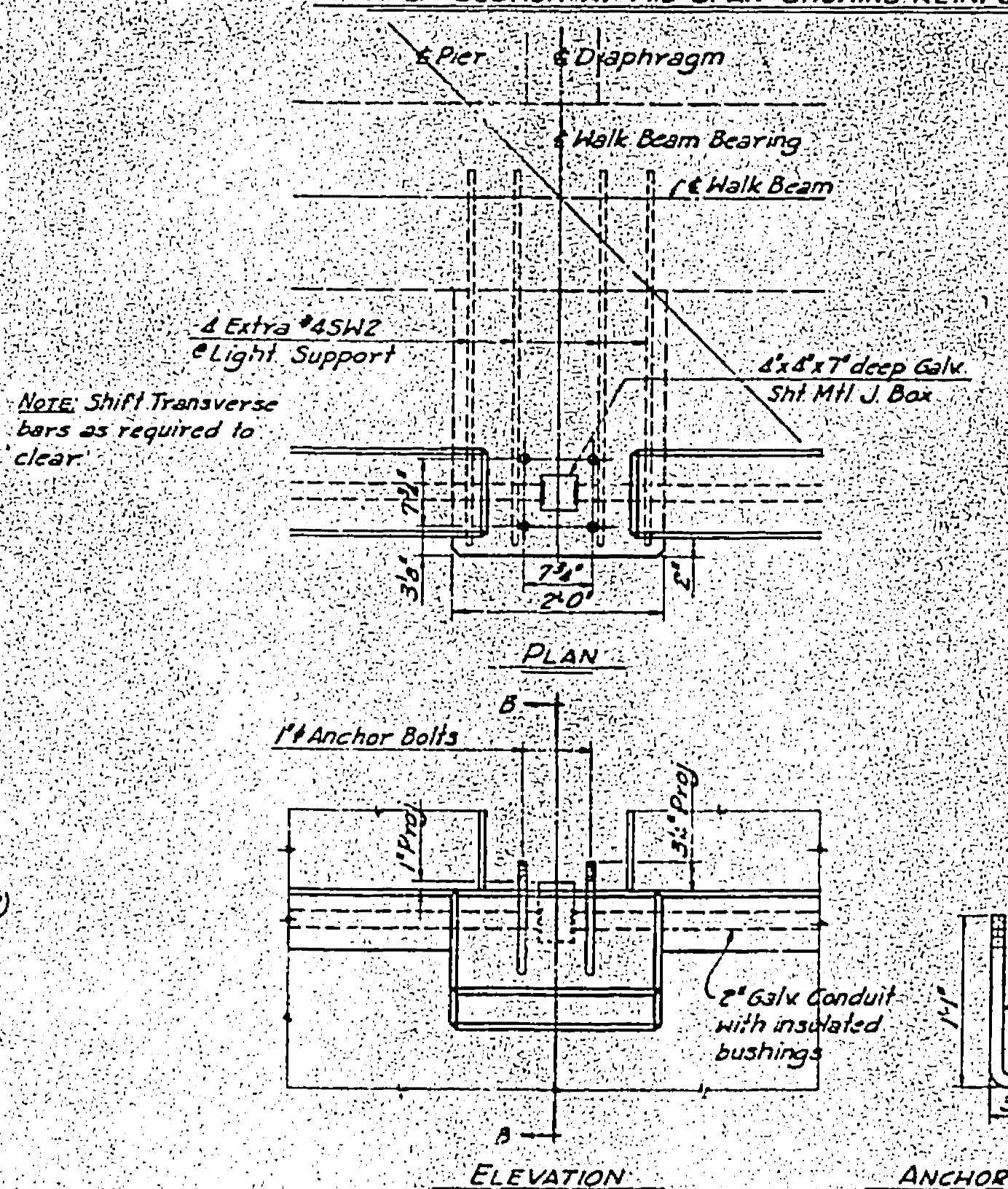
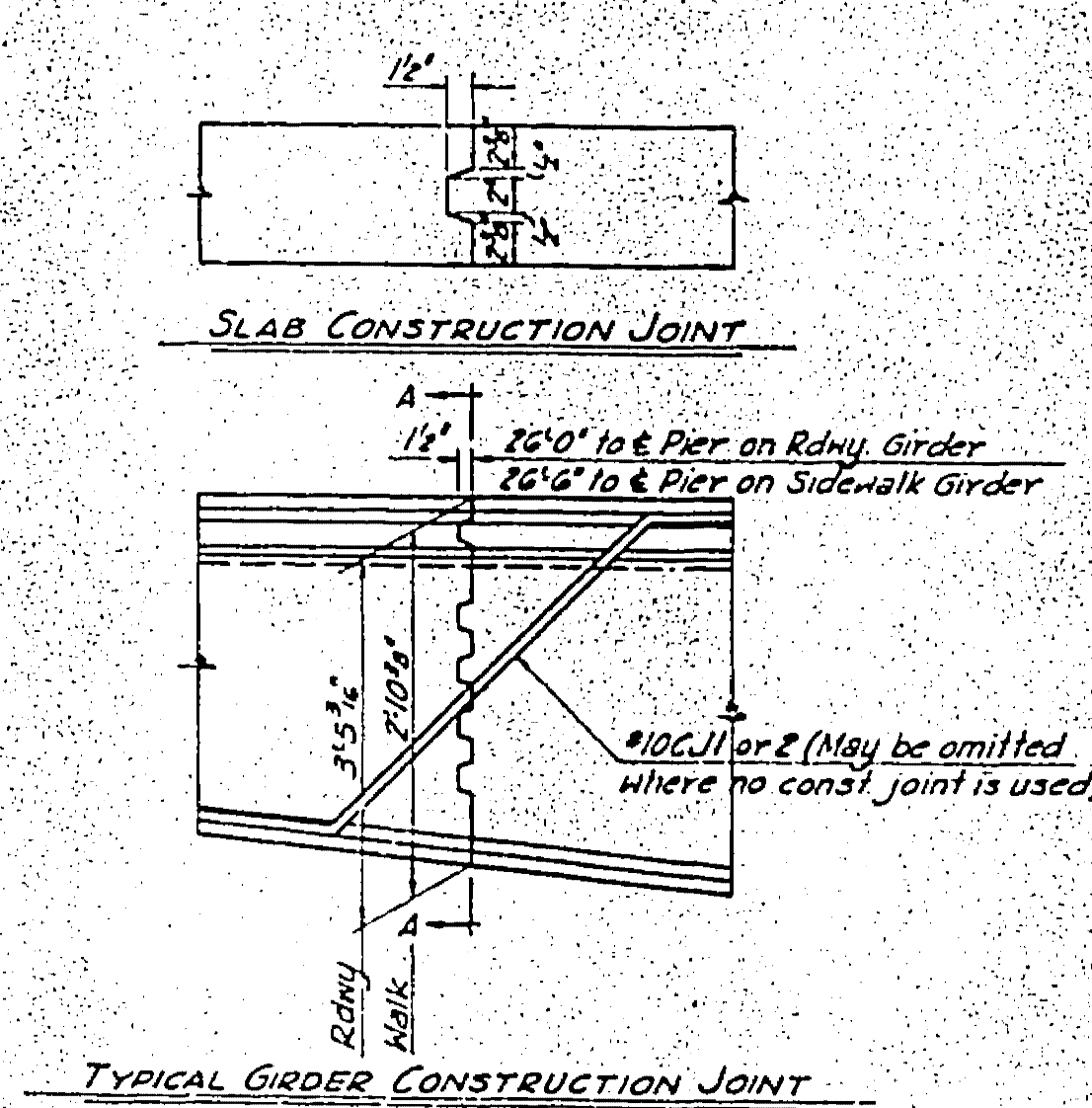
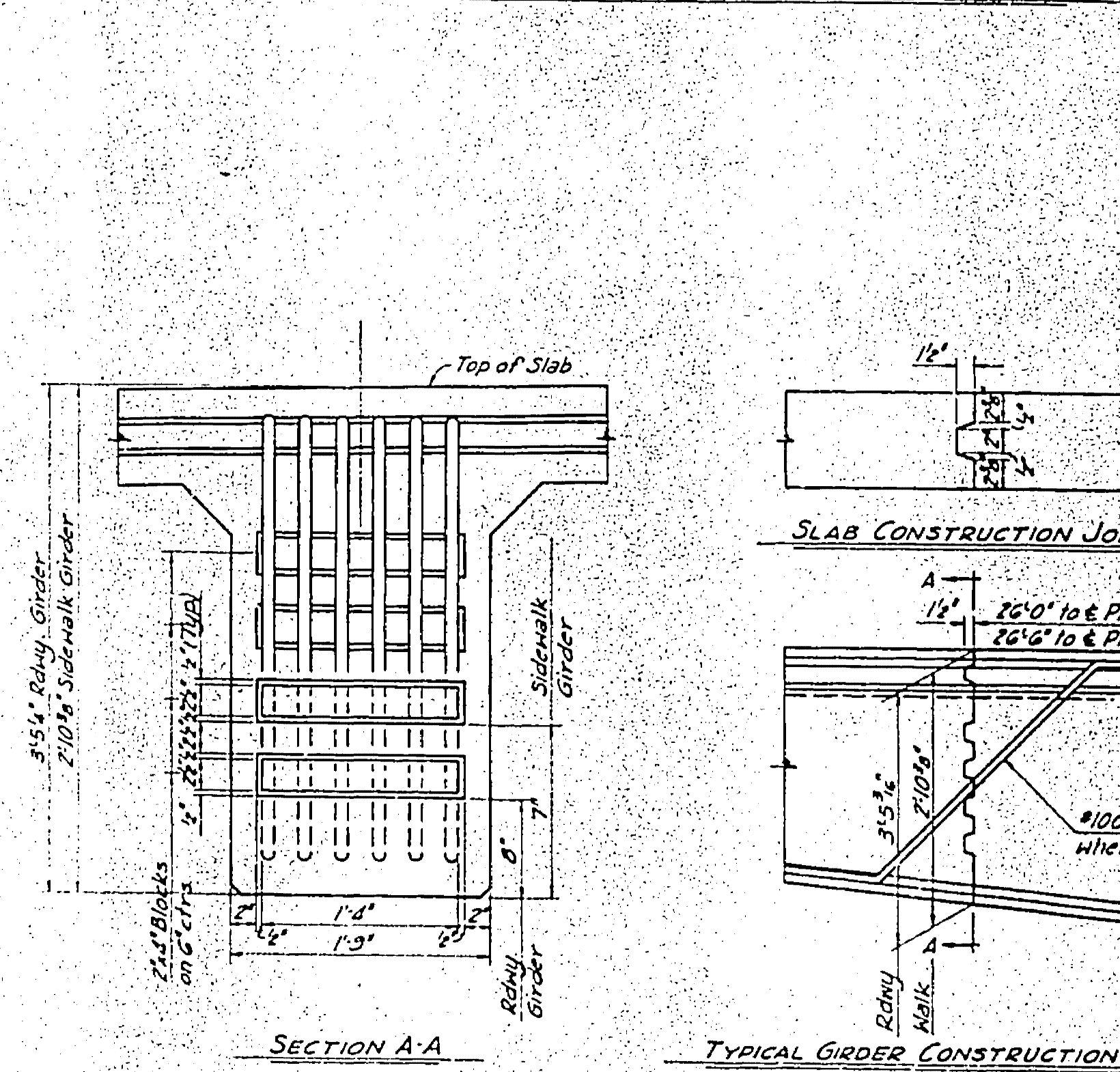
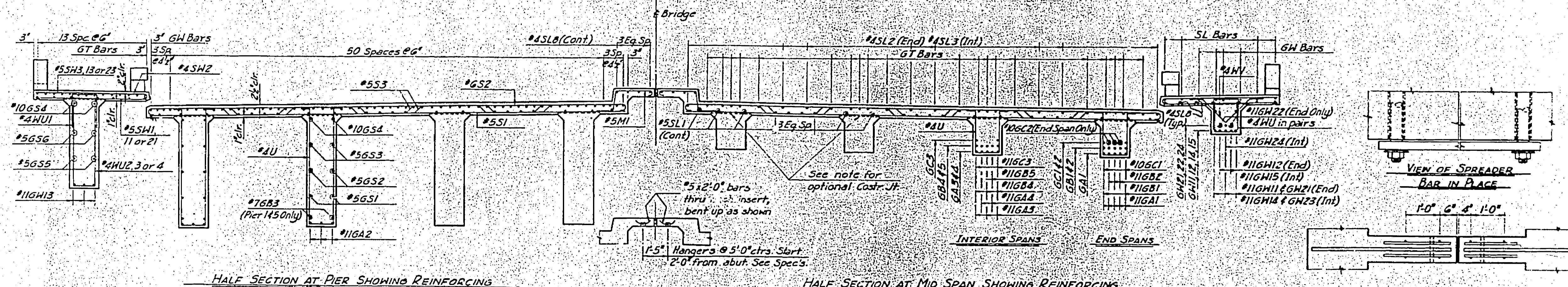


CONSTRUCTION NOTES:

At the Contractor's option concrete in the prestressing systems may be placed ahead of and cast into the flanges, provided that the stems are placed to a level above the fillets as shown; fillets be brushed from the surface before final set, and the surface thoroughly sanded and impregnated before placing flange concrete. Place the flange concrete as soon as practically possible after concrete of the stem has fully settled.

Median curbs shall be poured after falsework is removed from both sides of superstructure or form suspended from superstructure concrete. Inserts may be installed under superstructure for cement of the median forms.

Camber edges of walk upward as shown between brackets and/or fixed stairways.



NOTE:
Use Class AAA (AE) Concrete thru out on superstructure.
Design Loading: HS 20-44 (1969 Ed.)
See Sheet 9 for Superstructure Plan
See Sheet 4 for General Notes
See Sheet 11 for Handrail Details
See Sheet 12 for details of structural steel tie bars.
See Sheet 15 for Bar List and Bending Diagrams.

CITY OF WICHITA, KANSAS
B.E. SMITH, P.E. CITY ENGINEER
TWENTY-FIRST STREET BRIDGE OVER THE BIG ARKANSAS RIVER
DECK SECTIONS

PROJECT C 10-51 AS-BUILT
NOVEMBER 1972