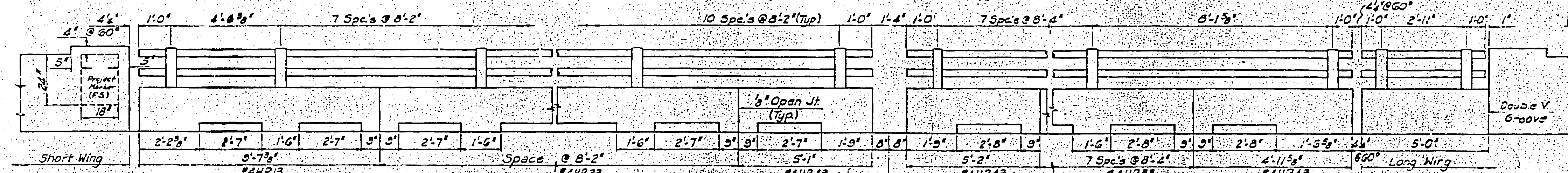
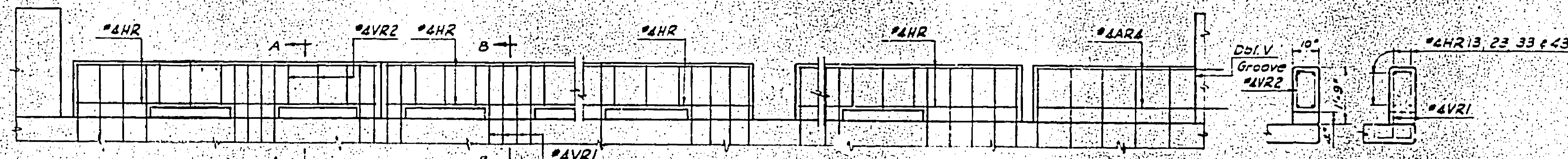


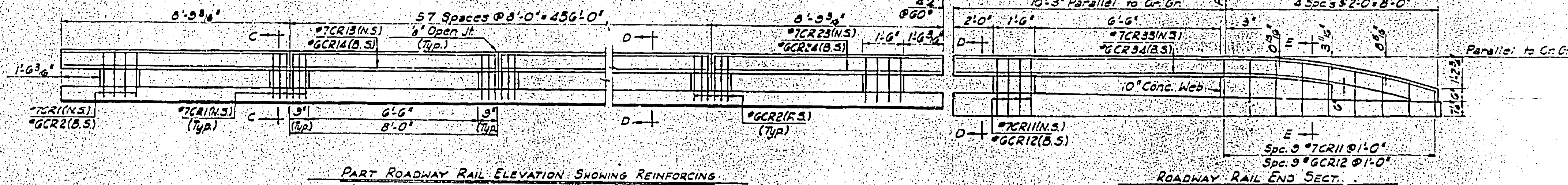
HANDRAIL LAYOUT



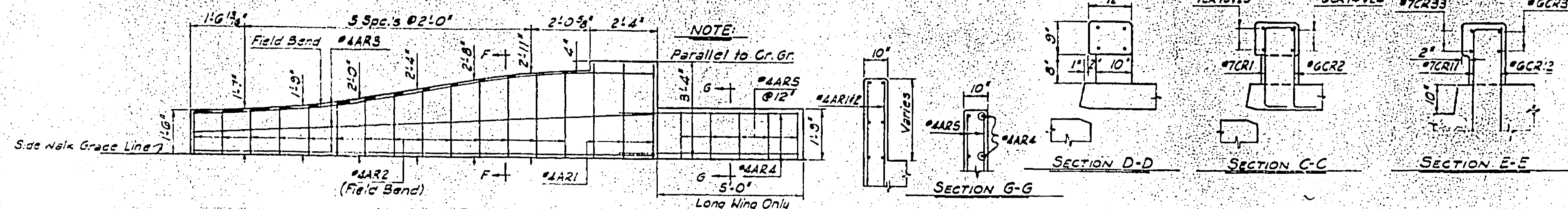
ELEVATION
(Viewed from Outside)



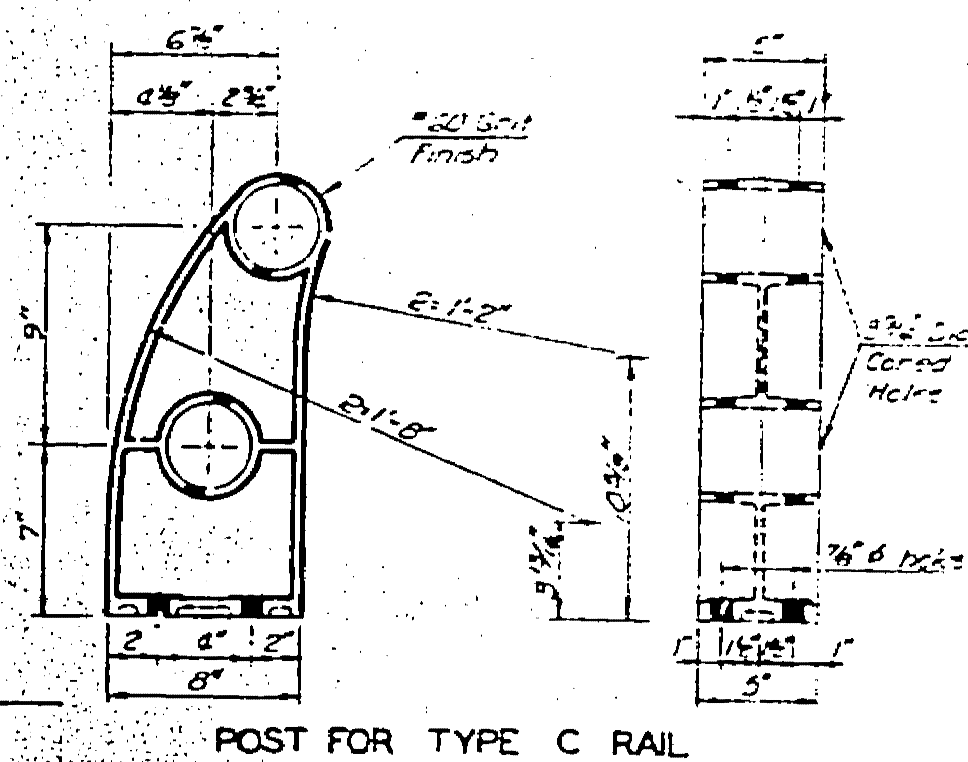
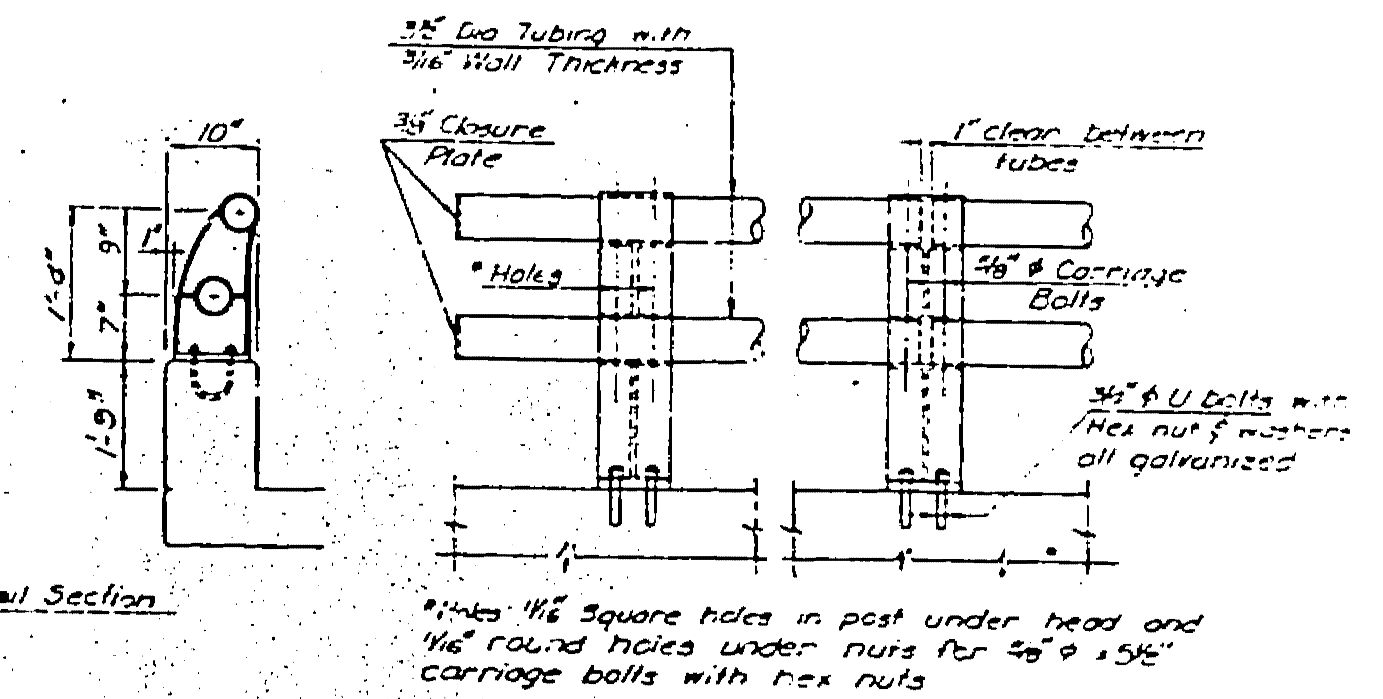
PART SIDEWALK RAIL ELEVATION SHOWING REINFORCING



PART ROADWAY RAIL ELEVATION SHOWING REINFORCING



NOTE:
Parallel to Gr. Gr.



GALVANIZED U-BOLTS DETAILS

Notes: (Aluminum Handrail)
Handrail Tubing shall be fabricated in lengths to include two or three spaces.
Bolt holes in tubing or intermediate posts to be 1/16" diameter. All other posts 1/16" slotted holes centered on 2" @ 60°.
All rail post flanges and webs shall have a minimum thickness of 3/16" with 3° draft. Nominal thickness of base shall be 3/16" with minimum of 3/8".
Aluminum shims between concrete and post base may be used. The source base post shall be thoroughly caulked with Fluoromastic compound or other approved material.

ALUMINUM HANDRAIL DETAILS TYPE C

NOTE:
Use Specs 44447 through 44451 for handrails and 44452 for rails.
See Sheet 4 for General Notes.
See Sheet 5 for Elevation Notes and Bending Diagrams.