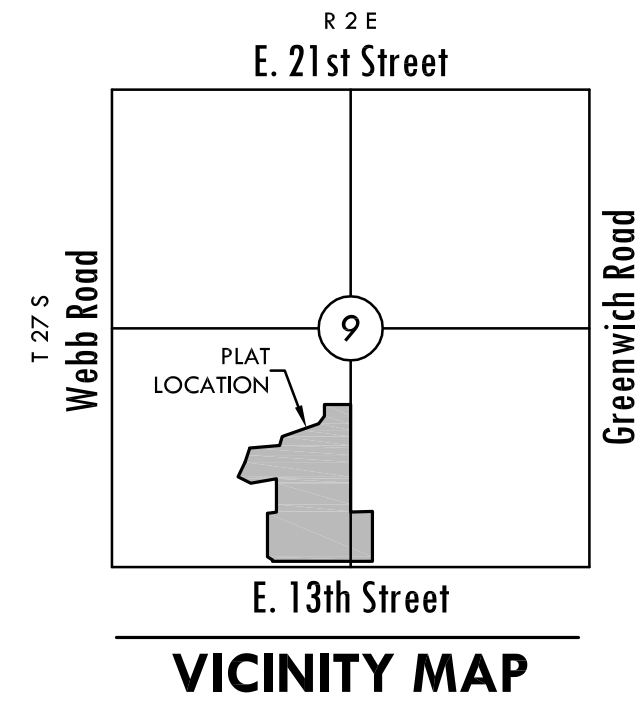


FINAL PLAT

THE WATERFRONT SIXTH ADDITION

AN ADDITION TO WICHITA, SEDGWICK COUNTY, KANSAS



BENCH MARK

□ Square cut on SW. corner of signal light pole base at NE. corner of Webb Rd. and 13th St.
Datum BM Elev.=1373.345 (NGVD 29)

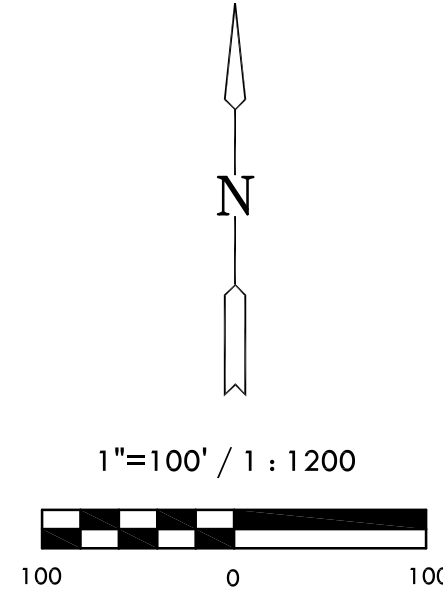
MINIMUM PAD ELEVATION LOWEST BUILDING OPENING		
LOT	BLOCK	ELEVATION NGVD 29
2	1	1380.9
N. 550.53' of 3	1	1380.9
S. 265.0' of 3	1	1386.1
N. 270.0' of 4	1	1386.1

STREET CENTERLINE TABLE		
LINE	LENGTH	BEARING
L1	526.69'	N00°59'11"W
L2	67.65'	N15°25'33"E
L3	141.50'	S89°00'49"W
L4	45.00'	S75°42'05"W

STREET CENTERLINE CURVE TABLE			
CURVE	LENGTH	RADIUS	DELTA
C1	156.40'	600.00'	14°56'06"
C2	218.84'	400.00'	31°20'50"
C3	193.87'	300.00'	37°01'32"
C4	82.78'	200.00'	23°42'48"
C5	64.31'	215.00'	17°08'21"

NOTES

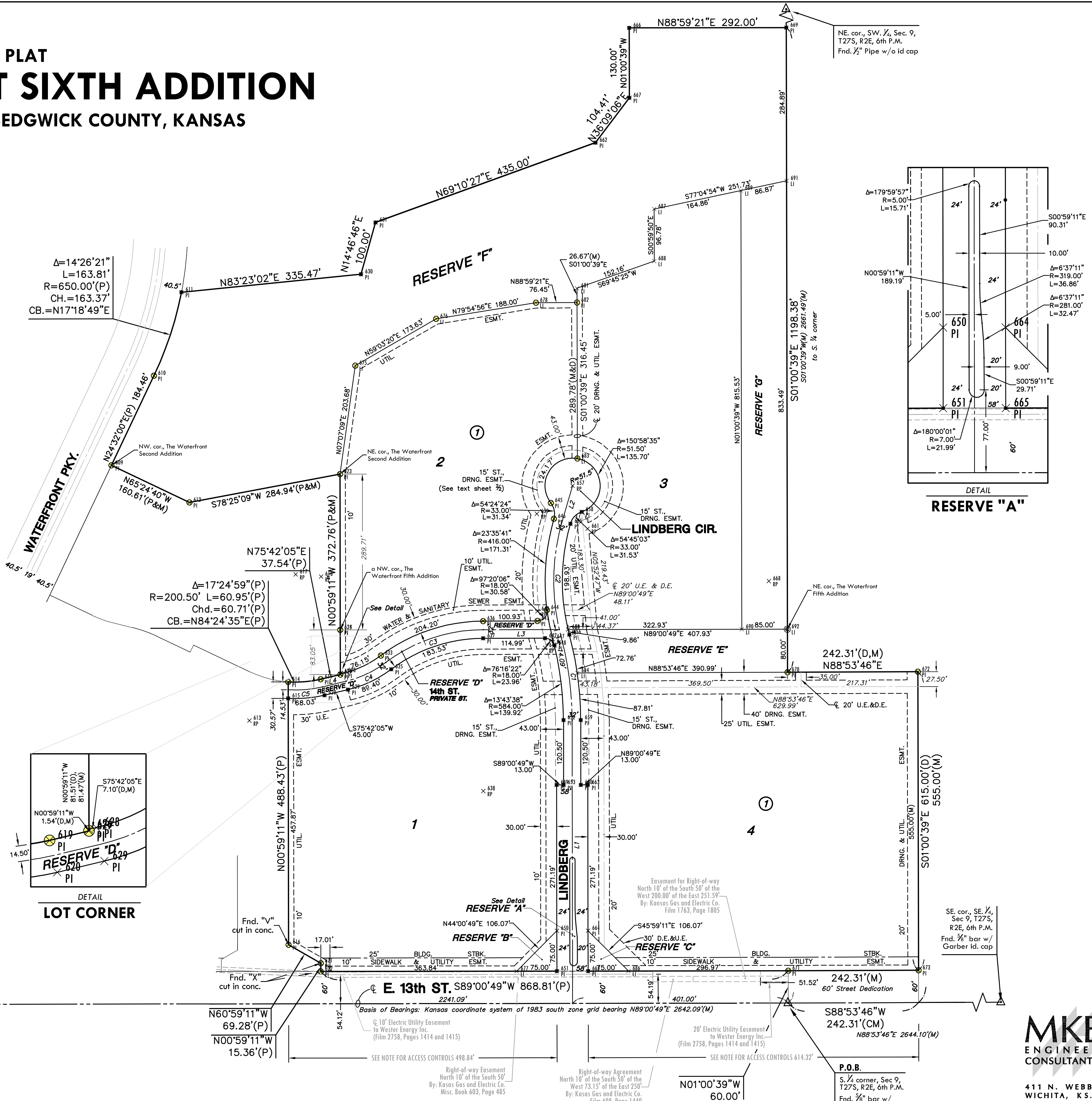
- Access Controls:**
13th Street - Access points for Block 1 shall be placed accordingly: The minimum distance between full turning movement drives shall be 400'. The minimum distance between a right-in/right-out drive and either another right-in/right-out drive or a full movement drive shall be 200'.
- Street Drainage Easements:**
Along Lindberg Street and Lindberg Circle where there is 32' of right-of-way a 15' street drainage easement is provided abutting and adjoining the 32' right-of-way as indicated.



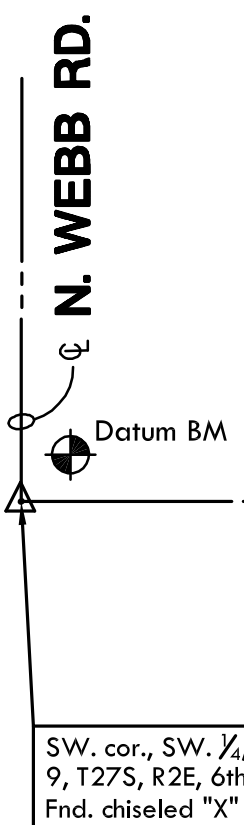
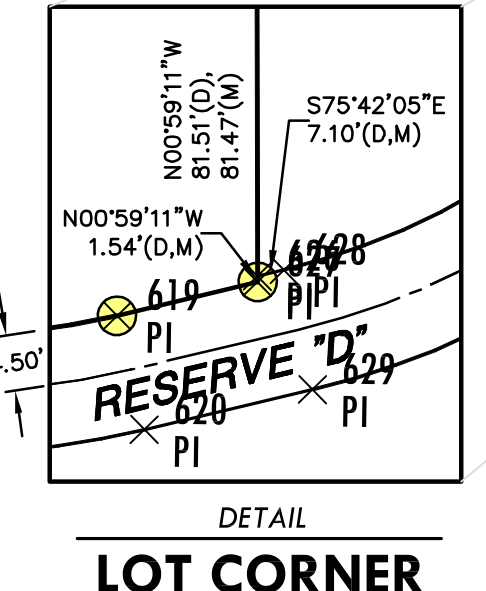
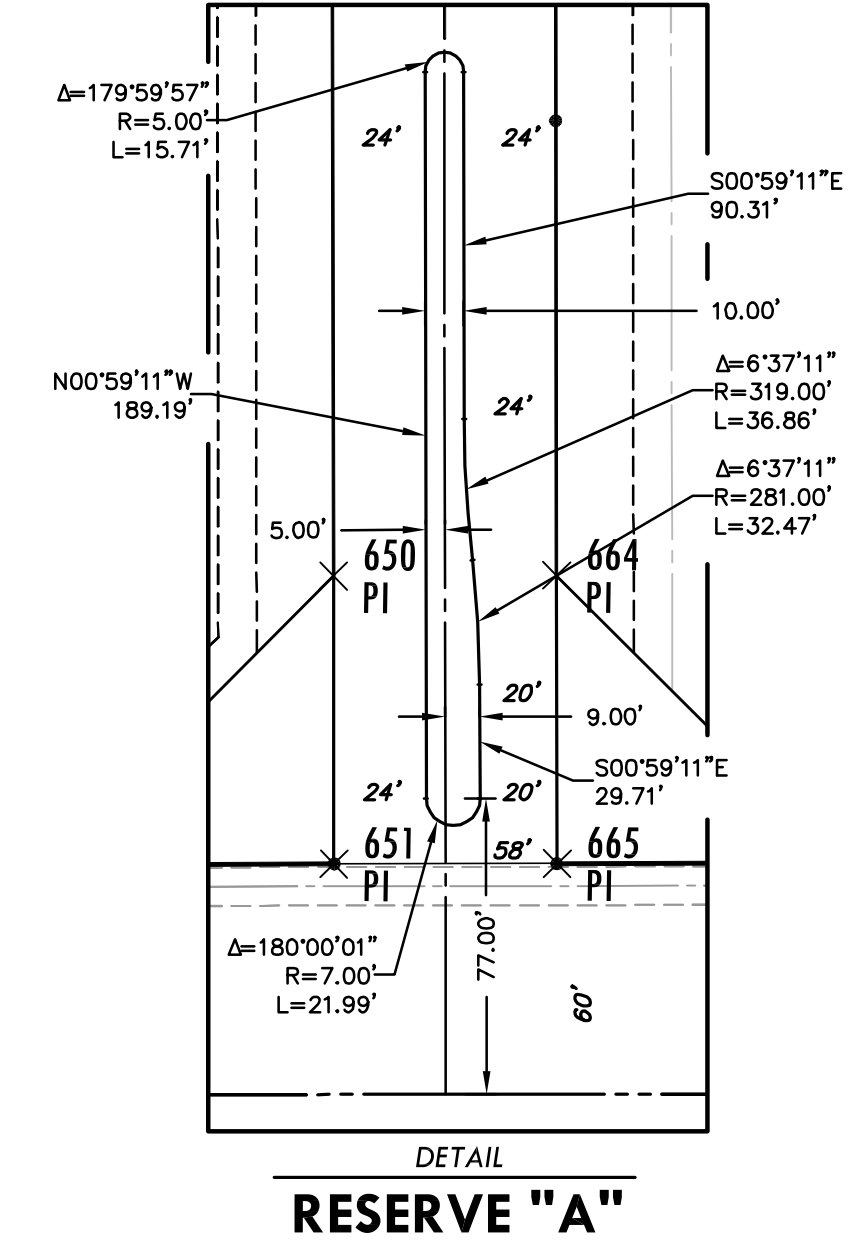
Basis of Bearing: Kansas coordinate system of 1983 south zone grid bearing of N89°00'49"E along the S. line of SW. 1/4, Sec. 9, T27S, R2E, 6th P.M.

LEGEND

- Date of Survey: July, 2006
- △ = Section corner Monument Found
 - = Found 3/8" Rebar w/ MKEC CLS 39 id. cap
 - = Set 3/8" Rebar w/ MKEC CLS 39 id. cap
 - (M) = Measured
 - (CM) = Calculated from measured
 - (P) = Platted
 - (D) = Described or Record Dimension



NE. cor., SW. 1/4, Sec. 9, T27S, R2E, 6th P.M.
Fnd. 1/2" Pipe w/o id cap



SW. cor., SW. 1/4, Sec. 9, T27S, R2E, 6th P.M.
Fnd. disealed "X"

Right-of-way Agreement North 10' of the South 50' of the West 73.15' of the East 250' By: Kansas Gas and Electric Co. Misc. Book 603, Page 485

Right-of-way Agreement North 10' of the South 50' of the West 200.00' of the East 251.59' By: Kansas Gas and Electric Co. Film 1763, Page 1805

20' Electric Utility Easement to Wester Energy Inc. (Film 2758, Pages 1414 and 1415)

SEE NOTE FOR ACCESS CONTROLS 498.84'

SEE NOTE FOR ACCESS CONTROLS 614.32'