

Meridian 53 Second Addition - SUB2023-00026

CERTIFICATE OF SURVEY

I, Ernest Patrick Fink, a Professional Surveyor in Kansas, do hereby certify that I have been in responsible charge of surveying and platting of "MERIDIAN 53 SECOND ADDITION" an addition to Wichita, Sedgwick County, Kansas, into Lots, Blocks, and Reserves, the same being accurately set forth in the accompanying plat and described herein:

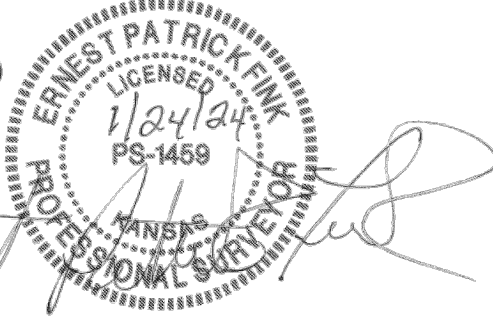
A replat of all of Lots 1, 2, 3, 4, Block A, and Reserves A and B, Meridian 53 Addition, Wichita, Sedgwick County, Kansas.

CONTAINING: 1,121,020 square feet or 25.73 acres of land, more or less.

All streets, easements, rights-of-way, building setbacks, access controls, together with all other public dedications within the above described property are hereby vacated and replatted by virtue of K.S.A. 12-512b, as amended.

I hereby certify that the details of this plat are correct to the best of my knowledge and belief this 24th day of January, 2024.

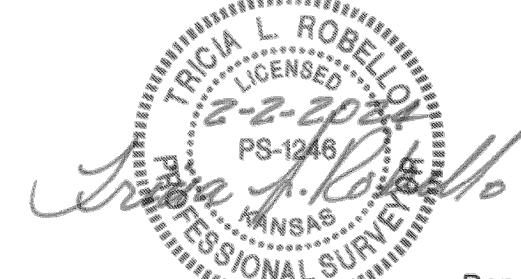
Ernest Patrick Fink, P.S. #1459
MKEC Engineering, Inc. (CLS 39)
411 North Webb Road
Wichita, Kansas 67206



COUNTY SURVEYOR

STATE OF KANSAS, SEDGWICK COUNTY) ss:

Reviewed in accordance with K.S.A. 58-2005 on this 2nd day of February, 2024.



Tricia L. Robello, P.S. #1246
Deputy County Surveyor
Sedgwick County, Kansas

OWNER'S CERTIFICATE

Know all men by these presents that we the undersigned property owners of the land above set forth in the Professional Surveyor's Certificate, have caused the same to be surveyed and platted into Lots, Blocks, and Reserves, the same to be known as "MERIDIAN 53 SECOND ADDITION" an addition to Wichita, Sedgwick County, Kansas.

Easements for the construction and maintenance of utilities, as indicated hereon, are hereby granted to the public. Easements for the construction and maintenance of drainage, as indicated hereon, are hereby granted to the public. Easements for the construction and maintenance of drainage and utilities, as indicated hereon, are hereby granted to the public.

All abutters rights of access to or from Meridian Avenue over and across the east line of "MERIDIAN 53 SECOND ADDITION," are hereby granted to the appropriate governing body, provided however one full movement and two right in/out openings, as indicated hereon.

Reserves A, B, and C, are platted for ingress and egress access, landscaping, irrigation, sidewalks (private), signs, monuments, fences/walls, cross-lot drainage, utilities confined by easement (platted or otherwise separate instrument), and all land uses permitted per the recitals of CUP DP-361.

A master drainage plan has been developed for this plat. All drainage easements, rights-of-way, and reserves shall remain at established grades (unless modified with the approval of the City Engineer) and shall be unobstructed to allow for the conveyance of stormwater in accordance with the Stormwater Manual.

FEMA floodplain and regulatory floodway boundaries are subject to periodic change and such change may affect the intended land use within the subdivision. Portions of the land within the plat boundaries are encumbered with a floodplain at the time of final platting.

The property is within a zone identified by the City Engineer's office as likely to have groundwater at some or all times within ten feet of the ground surface elevation. Building with specially engineered foundations or with the lowest floor opening above groundwater is recommended and owners seeking building permits on this property will be similarly advised.

This plat shall comply with the recitals of the Meridian 53 Community Unit Plan (CUP) DP-361 on file at the Wichita-Sedgwick County Planning Department.

Broadmoor One, LLC, a Kansas limited liability company
by: Circle C, L.P., a Kansas limited liability company, manager
by: Louise A. Caro 2012 Irrevocable Family Trust, manager

Alfred A. Caro, Trustee

STATE OF KANSAS, SEDGWICK COUNTY) ss:
This instrument was acknowledged before me on 24th day of January, 2024, by Alfred A. Caro, Trustee, Louise A. Caro 2012 Irrevocable Family Trust, as manager of, Circle C, L.P., a Kansas limited liability company, as manager of, Broadmoor One, LLC, a Kansas limited liability company, and on behalf of said limited liability company.

IN WITNESS WHEREOF, I have hereunto set my hand and affixed my official seal, the day and year last above written.

Affix Seal
Notary Public
My Term Expires: May 5, 2025

MORTGAGE CERTIFICATE

Stryv Bank, holder of a mortgage on the above described property, does hereby consent to the "MERIDIAN 53 SECOND ADDITION" final plat.

STRYV BANK

Zachary Weast, Executive Vice President

STATE OF KANSAS, SEDGWICK COUNTY) ss:
This instrument was acknowledged before me on this 25th day of January, 2024 by Zachary Weast, Executive Vice President, Stryv Bank, on behalf of the bank.

IN WITNESS WHEREOF, I have hereunto set my hand and affixed my official seal, the day and year last above written.

Affix Seal
DENAL GOODALL
Notary Public - State of Kansas
My Term Expires: 3-23-2025

PLANNING COMMISSION CERTIFICATE

This plat of "MERIDIAN 53 SECOND ADDITION" has been submitted to and approved by the Wichita-Sedgwick County Area Planning Commission, Wichita, Kansas.

Dated this 11 day of January, 2024.

WICHITA-SEDGWICK COUNTY METROPOLITAN AREA PLANNING COMMISSION, Wichita, Kansas.

By Robert Dool, Chair

Attest: Scott A. Wadle, Secretary

GOVERNING BODY CERTIFICATE

This plat approved and all dedications shown hereon, accepted by the Wichita City Council of the City of Wichita, Kansas dated this 20th day of February, 2024.

At the direction of the City Council.

Lily Wu, Mayor

Attest: Jamie Buster, City Clerk

TRANSFER RECORD

STATE OF KANSAS, SEDGWICK COUNTY) ss:

Entered on transfer record this 4th day of March, 2024.

Kelly B. Arnold, County Clerk

REGISTER OF DEEDS' CERTIFICATE

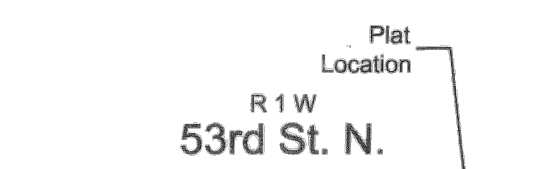
STATE OF KANSAS, SEDGWICK COUNTY) ss:

This is to certify that this instrument was filed for record in the Register of Deeds office this 5th day of March, 2024, at 10:32:54 o'clock A.M. and is duly recorded.

Tonya E. Buckingham, Register of Deeds

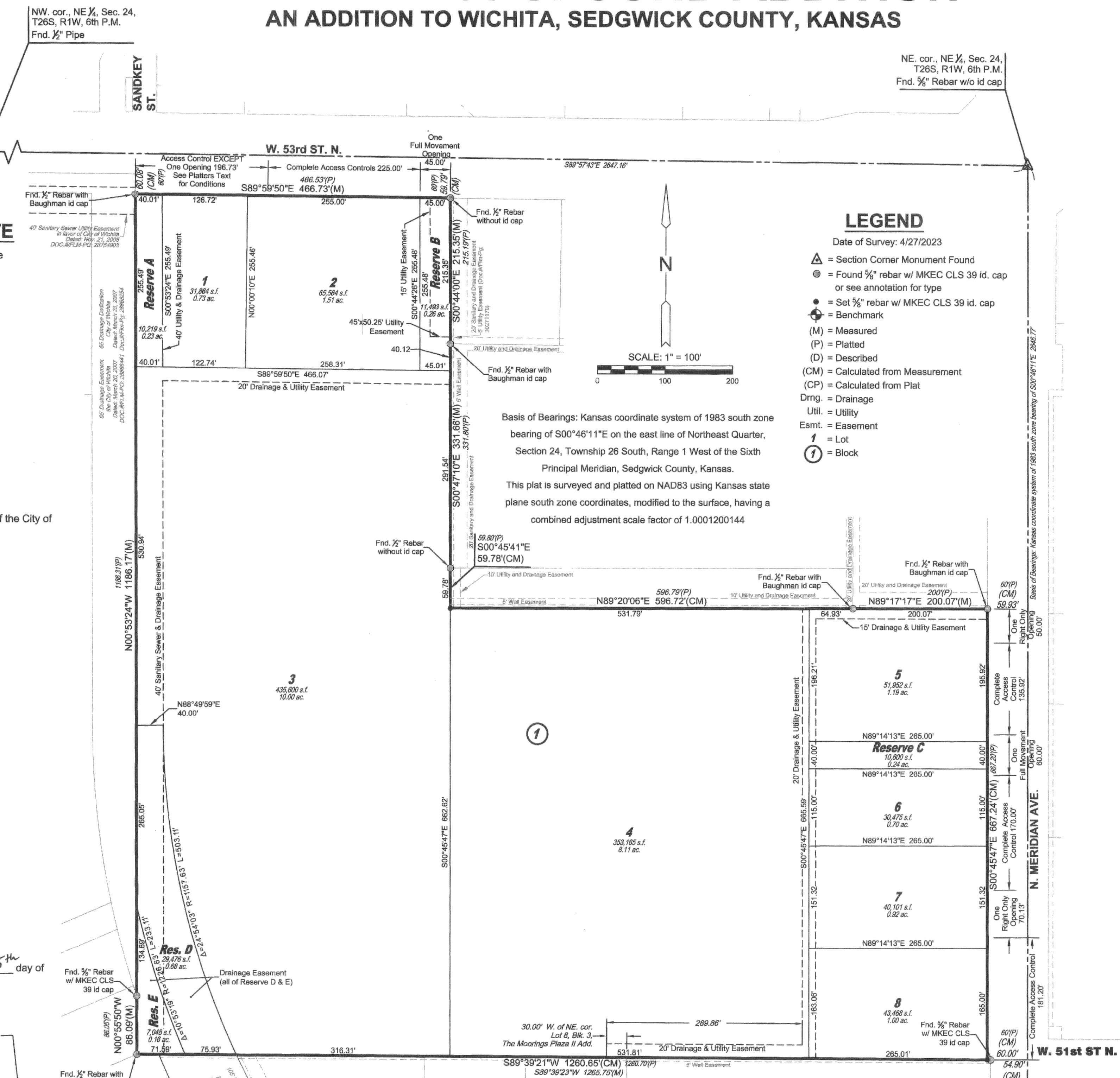
Kenly Zehring, Deputy

Register of Deeds - Sedgwick County
Doc.#/File-Pg: 30294250
Recorded: 03/05/2024 10:32:54 AM



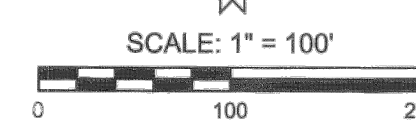
VICINITY MAP

FINAL PLAT
MERIDIAN 53 SECOND ADDITION
AN ADDITION TO WICHITA, SEDGWICK COUNTY, KANSAS



LEGEND

- Date of Survey: 4/27/2023
= Section Corner Monument Found
= Found 3/4" rebar w/ MKEC CLS 39 id. cap or see annotation for type
= Set 3/8" rebar w/ MKEC CLS 39 id. cap
= Benchmark
(M) = Measured
(P) = Platted
(D) = Described
(CM) = Calculated from Measurement
(CP) = Calculated from Plat
Dmg. = Drainage
Util. = Utility
Esmt. = Easement
1 = Lot
= Block



Basis of Bearings: Kansas coordinate system of 1983 south zone bearing of S00°46'11"E on the east line of Northeast Quarter, Section 24, Township 26 South, Range 1 West of the Sixth Principal Meridian, Sedgwick County, Kansas.
This plat is surveyed and platted on NAD83 using Kansas state plane south zone coordinates, modified to the surface, having a combined adjustment scale factor of 1.0001200144

NOTES

- 1.) This plat of "MERIDIAN 53 SECOND ADDITION" is subject to the conditions of the Community Unit Plan DP-361. The building setbacks are established with the C.U.P.
2.) FEMA floodplain and regulatory floodway boundaries are subject to periodic change and such change may affect the intended land use within the subdivision.
3.) Access Controls to Lots 1 and 2 across the W. 196.73 feet of 53rd St. frontage: One access point is allowed as follows. The minimum distance between full turning movement drives shall be 400 feet.

BENCHMARKS

- BM#1 Chiseled "X" on a chiseled square cut at the SW. corner of a RCB 46 feet west of the centerline of Meridian Ave. and 668 feet north of the SE corner of the NE 1/4, Sec. 24, T26S, R1W, Elev.=1328.69 NAVD88
BM#2 MAG Nail with MKEC Control Washer on the W. corner of curb inlet 9.8' S. of the N. corner of Lot 5, Blk. 2, The Moorings Plaza 4th Add. Elev.=1329.13 NAVD88

Table with columns: LOT(S) inclusive, BLOCK, ELEVATION NAVD 88. Rows: 1, 1, 1331.9; 3, 1, 1331.3

