

GENERAL NOTES:

- The Contractor shall comply with all applicable safety regulations. All construction shall be completed following current City Standard Specifications and Special Provisions.
- Contractor will be required to provide notice to utility companies a minimum of seventy-two (72) hours prior to any excavation, as follows:

Kansas One—Call 687-2470

The Contractor must notify the following in case of an emergency:

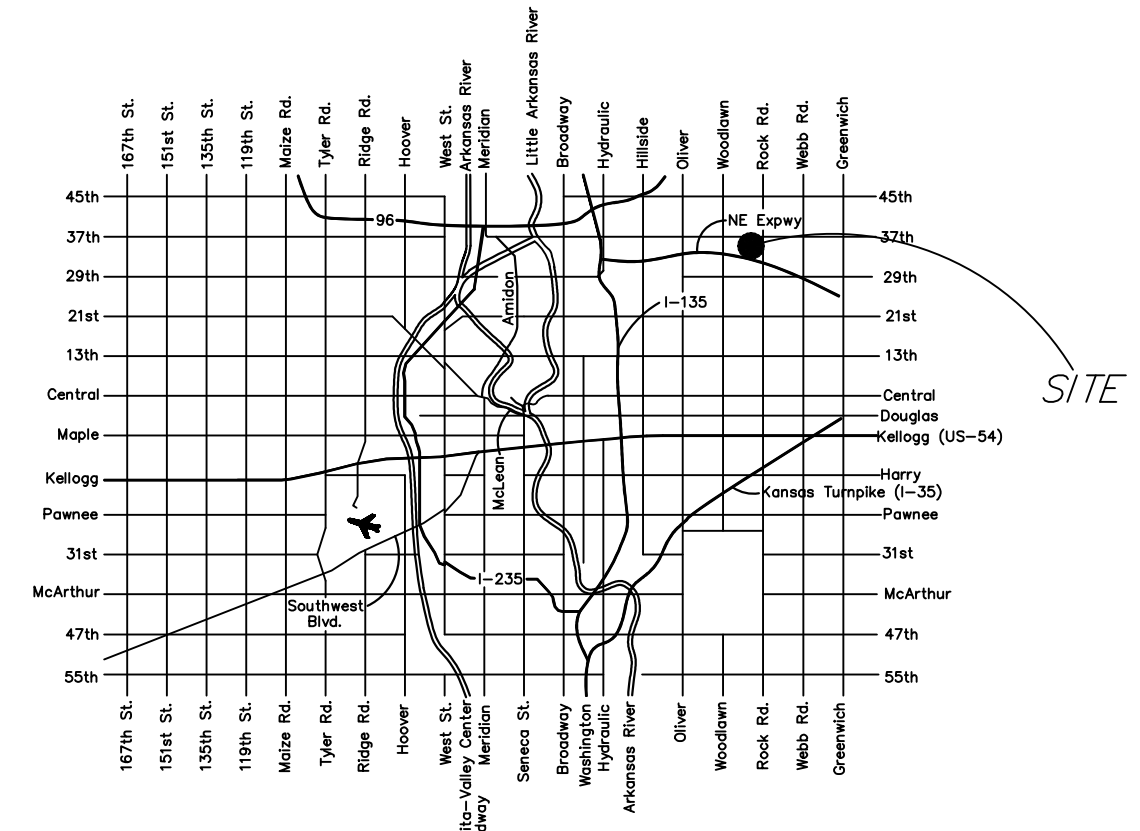
AT&T	1-800-246-8464
Black Hills Energy	1-800-694-8989
City of Wichita Water & Sewer	1-316-219-8921
City of Wichita Stormwater	1-316-268-4090
City of Wichita Traffic	1-316-268-4034
Cox Communications	1-888-249-3530
Kansas Gas Service	1-888-482-4950
Westar Energy	1-800-544-4857
- Utility service lines, poles, etc. are to be adjusted as necessary by others prior to construction unless the plans specifically call for their adjustment by the Contractor or unless the plans specifically identify a utility to be adjusted by its owner during construction. Existing utilities and their location, as shown on the plans, represent the best information obtainable for design. The Contractor will be required to work around existing utilities within the right-of-way which do not conflict with proposed construction.
- Rubble from the removal of miscellaneous structures and excess excavation which is to be wasted shall be disposed of on sites to be provided by the Contractor. These sites shall be approved by the Engineer as to suitability, appearance and site location. Locations, in the opinion of the Engineer, that will leave an unsightly appearance will not be approved. All disposal sites must be approved by the Kansas Department of Health and Environment. Material either stockpiled or disposed of in a flood plain will require a Kansas State Board of Agriculture permit. Any material dumped in waters of the United States or wetlands is subject to U.S. Corps of Engineers permitting regulations. Any material buried or stockpiled beyond approved construction limits will require additional archaeological investigations unless buried in a previously approved borrow location.
- Trees and shrubs in public right-of-way which are in direct conflict with proposed new construction shall be removed by the Contractor with the City Engineer's approval. Trees and shrubs which are not in direct conflict with proposed new construction shall be saved and protected from damage.
- The Contractor shall give all property owners and/or tenants of developed property abutting the construction of this project a minimum of ten (10) days notice prior to start of construction.
- The Contractor shall be responsible for preserving property irons. The Contractor will be required to re-establish any property irons which are damaged or destroyed by his construction operations. Such irons shall be re-established by a licensed land surveyor in accordance with state laws.
- The Engineering Division shall field locate water valves one time during construction when requested by the Contractor. It shall be the Contractor's responsibility to preserve such field locations during the construction process. Water valves, valve boxes or fire hydrants damaged during construction shall be repaired by Contractor at his own expense. Valve boxes and water meters within the project limits shall be adjusted to match final grades by the contractor.
- The Contractor shall notify the inspecting engineer and Dawnita Reinhardt at 316-650-0740 with the City of Wichita with the anticipated construction start date and notify them of project completion. Staking and inspection for this project will be the responsibility of the Contractor.
- If traffic will be impacted by construction, a traffic control plan must be submitted and approved by the City Traffic Engineer, Mike Armour at traffic@wichita.gov before construction can begin. The Contractor shall be responsible for all traffic control measures to facilitate construction. All construction zone markings and signage shall conform to the latest version of the Manual on Uniform Traffic Control Devices (MUTCD) as published by the US Dept. of Transportation, Federal Highway Administration. All costs associated with construction markings and signage shall be the Contractors responsibility.
- All elevations shown are NAVD 88.
- All areas disturbed during construction that will not be under proposed pavement shall be restored to match existing conditions.

- Any sidewalk, drive approach, curb, or street pavement removed to construct project must have a pavement cut permit and be replaced by the City contractor. Permits can be obtained by calling 316-268-4501 or 316-268-4480.
- All applicable fees (tap, equity, in lieu of & main benefit) must be paid before any connections can be made on this project. Quotes can be obtained on fees by calling 316-268-4555.
- City maintenance of water mains ends at right-of-way or easement line or within two feet of vault.
- Opening and closing of water valves shall be done slowly to prevent damage to the water distribution system from water hammer. All valves closed by the contractor must be reopened as new construction permits. The project inspector must ascertain that any valve closed by the Contractor is reopened. The contractor will be permitted to operate water valves only when the project inspector assigned to the project is present.
- The Contractor shall lay a Tracer Wire and Set Test Stations along all water pipe installed in accordance with City Specifications and Tracer Wire Detail on detail sheet WL-101, cost is subsidiary to pipe installation.
- The contractor shall provide materials for temporary blowoff of waterlines. Connections to the existing waterline(s) shall be made with clean, swabbed pipe and flushed upon completion of tie-ins.
- Requests for short term water interruptions shall be made to the City Water Distribution Division and will be subject to their approval. The Contractor shall give written notice to any property owner, business, and/or tenants that will have water service interrupted at least 5 days in advance. Such notifications should indicate the time and date that the water will be turned off and when the service will be restored. No business, property owner, and/or tenants shall be without water service for more than 8 hours. Proposed tie in locations which will affect water service to property owners shall be preformed during non-peak hours.
- The Contractor must schedule the connections to the existing main with the City such that there is a minimum disruption of service. Connections shall be made during periods of low water usage. The Contractor shall submit his proposed schedule for completing work for City approval at least 10 days prior to beginning construction.
- Deflections at pipe joint or couplings shall not exceed the pipe manufactures recommended maximum. Where deflections are greater than the maximum allowed, the contractor shall utilize fittings.
- Any existing joint exposed during excavation shall be replaced if within four feet of proposed joint.
- Valves 12 inch and larger are to be operated by the City Water Distribution Division, 48 hours of advance notice is required with the water Dispatch at 316-291-8921.
- All wet taps shall be installed by the City of Wichita. The Contractor will reimburse the City for tapping fees prior to tap being made. Unless noted on plans.
- The Contractor shall protect from damage and support existing utilities through construction as approved by the utility owner and the Engineer at the contractors expense.
- Contractor shall limit the extent of trench openings overnight and weekends to less than 50 feet.
- Wichita Fire Department inspections may be scheduled by calling 316-650-0740
- Maintain a minimum of 10-foot horizontal separation between all water lines (mains, services, and fire hydrants) and all sanitary sewer lines (mains, services, and manholes). All separation distances are to be measured from edge-to-edge at the closest point.
- Maintain a minimum of 2-foot vertical separation between all water lines (mains and services) and all gravity sanitary lines (mains, services, and manholes) at crossings. All separation distances are to be measured from edge-to-edge, at the closest point.
- Maintain a minimum of 2-foot vertical separation between all water lines (mains and services) and all pressurized sanitary sewer lines (force mains and services) at crossings. Waterlines must always be placed above pressurized sanitary sewer lines where they cross. All separation distances are to be measured edge-to-edge, at the closest point.

WATER DISTRIBUTION SYSTEM TO SERVE KILLARNEY PLAZA 2ND DUPLEXES

CITY OF WICHITA, KANSAS
 Paul Gunzelman, P.E. City Engineer
 Project Number: 2024-006705 PPW
 Org Code: 54300980

American Darling (STORZ)
 Westlake C-900
 Northern Pipe C-900
 Sip MJ Acc. Pack & fittings
 Pro-trace wire
 Test stations and anodes



LOCATION MAP
 (For Visual Use Only)
 INDEX OF SHEETS:

- 1.0 Cover Sheet
- 2.0 Control Map
- 3.0 Plan & Profile - Line 1
- 4.0 Standard Water Details
- 4.1 Misc. Water Details
- 5.0 Erosion Control Plan
- 5.1-5.5 Erosion Control Details
- 6.0 Plat/Lot Split

Benchmarks

Benchmark #1:
 COW Disc approx on Northwest corner hubguard RCBC along the West R/W Line of Inwood St. Approx 374' West and 184' South of the Northwest Property corner of Comotora Power Center Addition.
 Elevation = 1371.15 NAVD 88

APPROVED AS NOTED BY WICHITA PUBLIC WORKS ENGINEERING DIVISION & BY WICHITA FIRE DEPARTMENT

Engineering approved by Shawn Mellies on this day the 20th of September, 2024

Utilities approved by Greg Lolley on this day the 20th of September, 2024

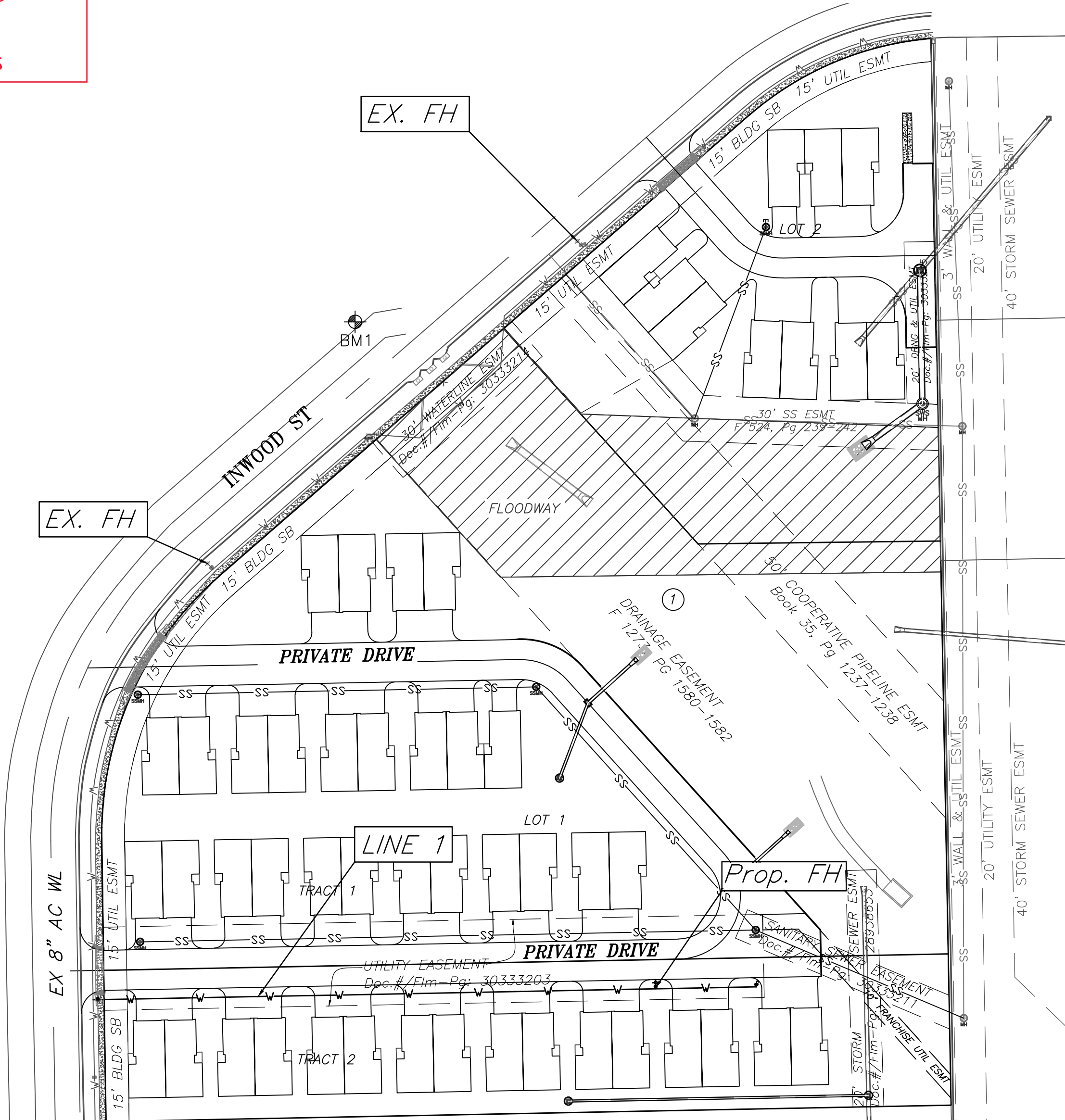
Fire Dept. approved by Jose Ocaziz on this day the 20th of September, 2024

NOTE TO CONTRACTORS

Public Property:
 Inspection and testing for the waterline is to be provided by a Licensed Consulting Engineering Firm under contract with the Owner/Developer. Said inspection is to be in accordance with the City of Wichita standard construction engineering practices and certified by a Professional Engineer Licensed in the state of Kansas. No work shall be performed in dedicated easements or public right-of-way by the Contractor without such inspection nor shall any work be commenced without written authorization by City Engineering. All Construction and Materials shall comply with the City or Wichita Specifications and Standards and Special Provision (on file and available in the City Engineer's Office) or on the City's Website.

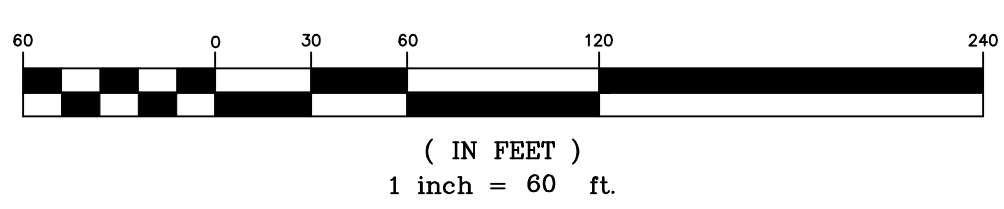
Private Property:
 Installation and testing for the fire protection line is to be performed by a City of Wichita licensed fire protection contractor in accordance with the fire codes as adopted by the City of Wichita. All material and construction practices for the fire protection line shall comply with the fire codes as adopted by the City of Wichita (available from the City of Wichita Fire Department). The Contractor shall not commence work without notification and approval of the Wichita Fire Department. Inspection of the fire protection line is to be provided by a licensed Engineering Firm under contract with the Owner/Developer and the Fire Department. The contractor shall not start work until the project inspector is assigned to the project and present on the site. Any work done without inspection will be required to be uncovered for inspection.

An approved copy of these plans signed by City staff are required on-site.



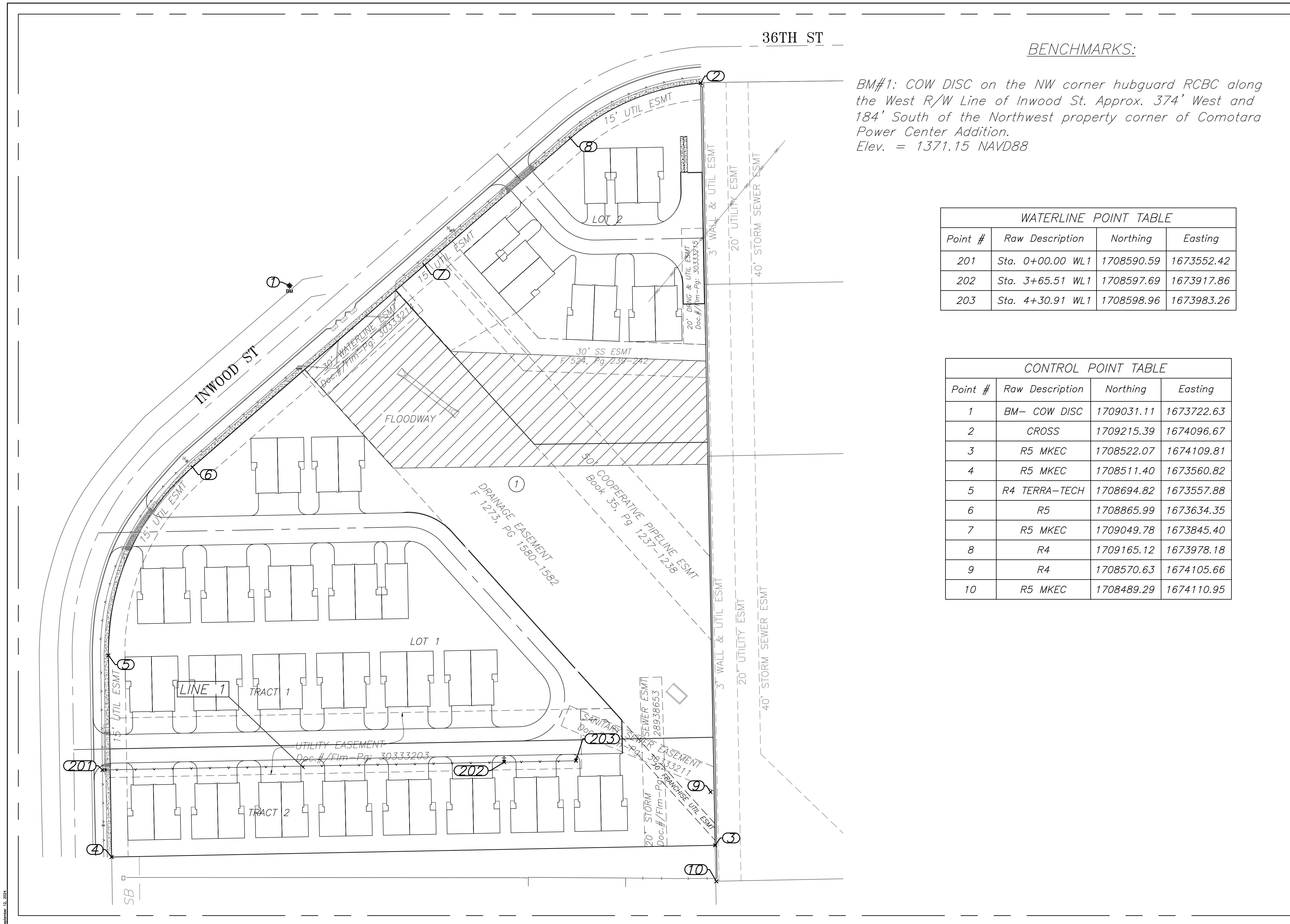
AS BUILTS

Contractor: McCullough Excavation 2/12/2025	Project Inspector: Larry Gann KEMILLER ENGINEERING PA 117 E. Lewis, Wichita, KS 67202 (316)264-0242
--	--



NOVEMBER 2023

KEMILLER
 ENGINEERING PA
 117 E. Lewis, Wichita, KS 67202 (316)264-0242

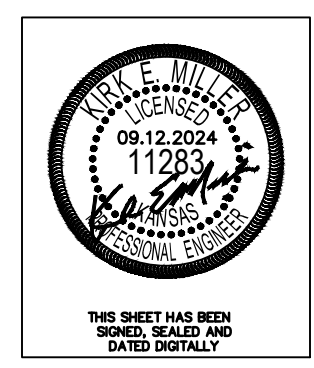


BENCHMARKS:

BM#1: COW DISC on the NW corner hubguard RCBC along the West R/W Line of Inwood St. Approx. 374' West and 184' South of the Northwest property corner of Comotara Power Center Addition.
Elev. = 1371.15 NAVD88

WATERLINE POINT TABLE			
Point #	Raw Description	Northing	Easting
201	Sta. 0+00.00 WL1	1708590.59	1673552.42
202	Sta. 3+65.51 WL1	1708597.69	1673917.86
203	Sta. 4+30.91 WL1	1708598.96	1673983.26

CONTROL POINT TABLE			
Point #	Raw Description	Northing	Easting
1	BM- COW DISC	1709031.11	1673722.63
2	CROSS	1709215.39	1674096.67
3	R5 MKEC	1708522.07	1674109.81
4	R5 MKEC	1708511.40	1673560.82
5	R4 TERRA-TECH	1708694.82	1673557.88
6	R5	1708865.99	1673634.35
7	R5 MKEC	1709049.78	1673845.40
8	R4	1709165.12	1673978.18
9	R4	1708570.63	1674105.66
10	R5 MKEC	1708489.29	1674110.95



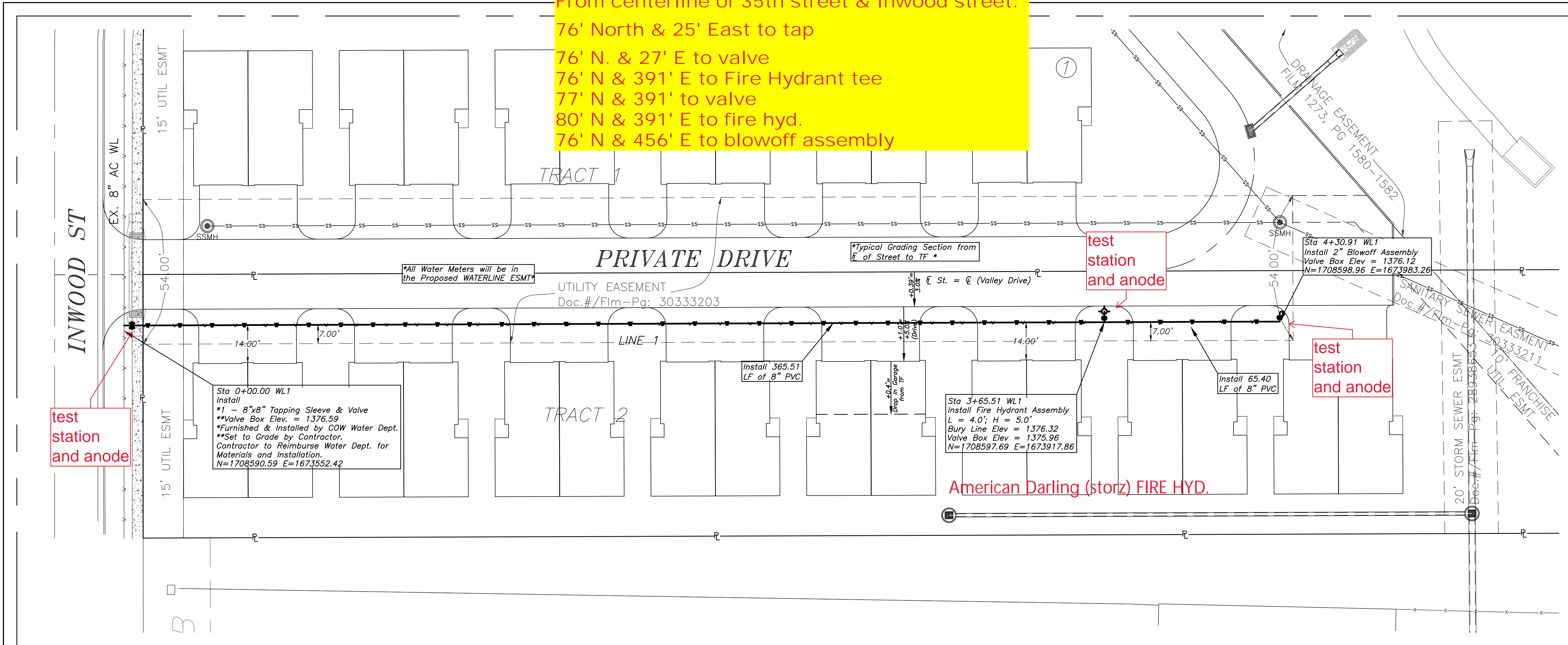
REVISED
Killarney Plaza 2nd Addition
Control Map
Wichita, Kansas

KEMILLER ENGINEERING
117 E. Lewis, Wichita, KS 67202 (316)264-0242

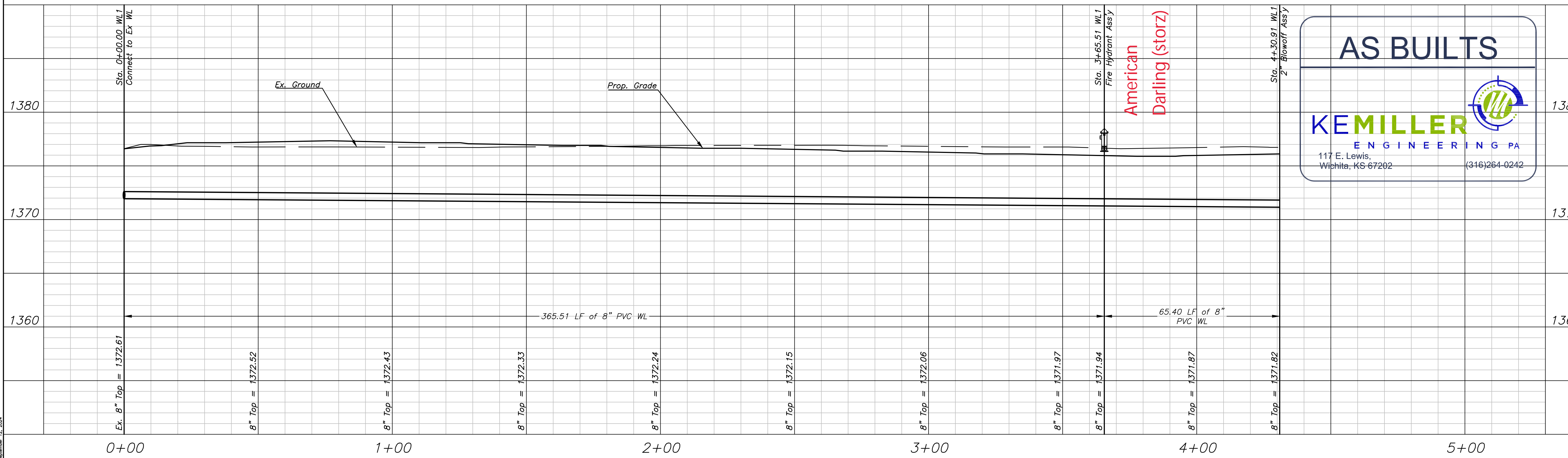
KEM PROJ. 2.3175	DATE 11.2023	SHEET 2.0
DESIGN KEM	DRAWN JW	

September 13, 2024

From centerline of 35th street & Inwood street:
 76' North & 25' East to tap
 76' N. & 27' E to valve
 76' N & 391' E to Fire Hydrant tee
 77' N & 391' to valve
 80' N & 391' E to fire hyd.
 76' N & 456' E to blowoff assembly

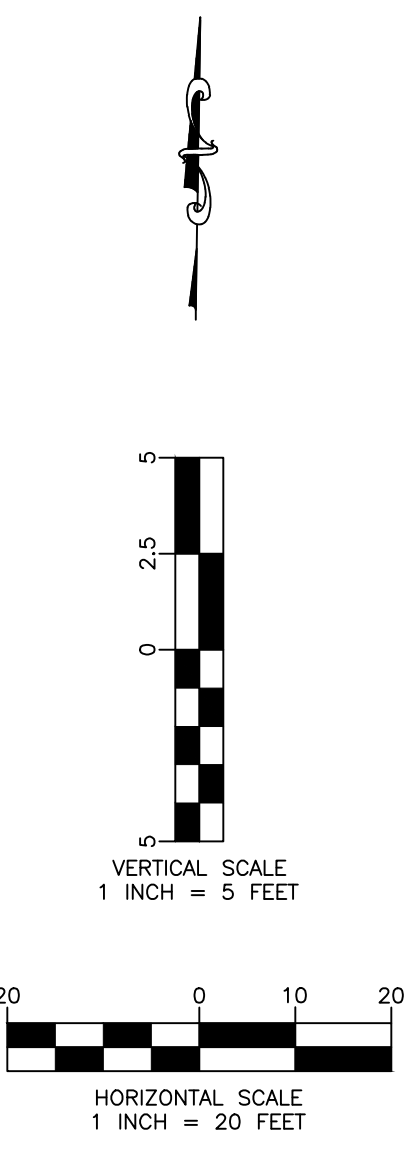
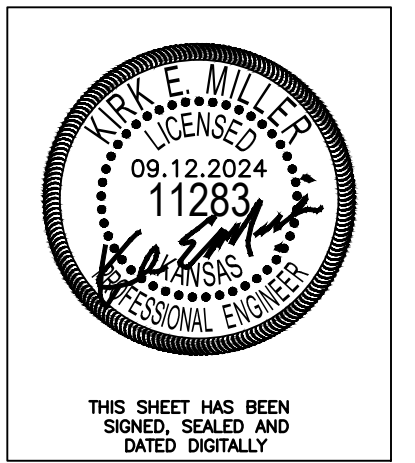


LINE 1



AS BUILTS

KEMILLER ENGINEERING PA
 117 E. Lewis, Wichita, KS 67202 (316)264-0242

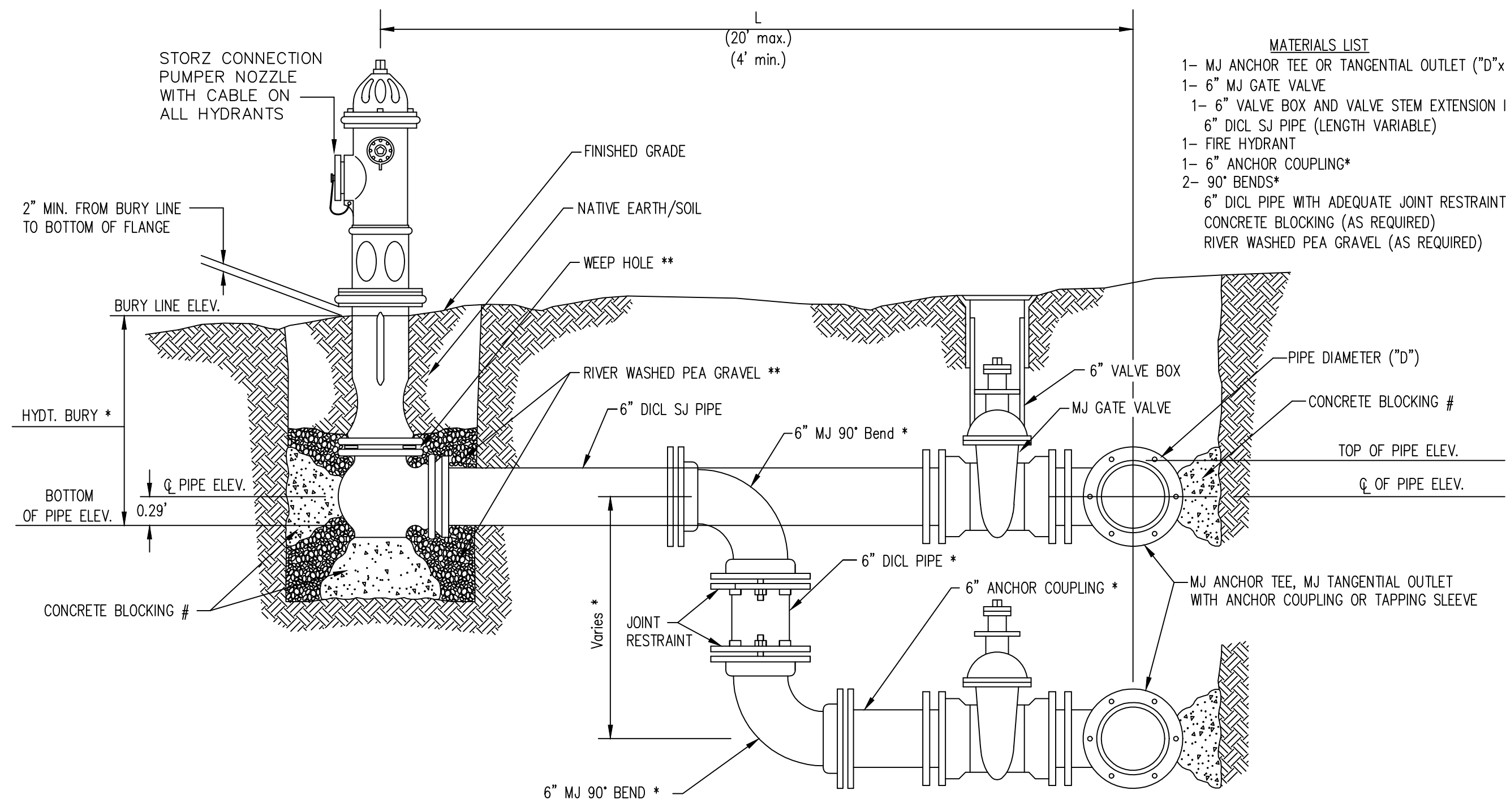


REVISED

Killarney Plaza 2nd Addition
 WL1 Plan & Profile
 Wichita, Kansas

KEMILLER ENGINEERING
 117 E. Lewis, Wichita, KS 67202 (316)264-0242

KEM PROJ: 23175	DATE: 11.2023	SHEET: 3.0
DESIGN: KEM	DRAWN: JW	



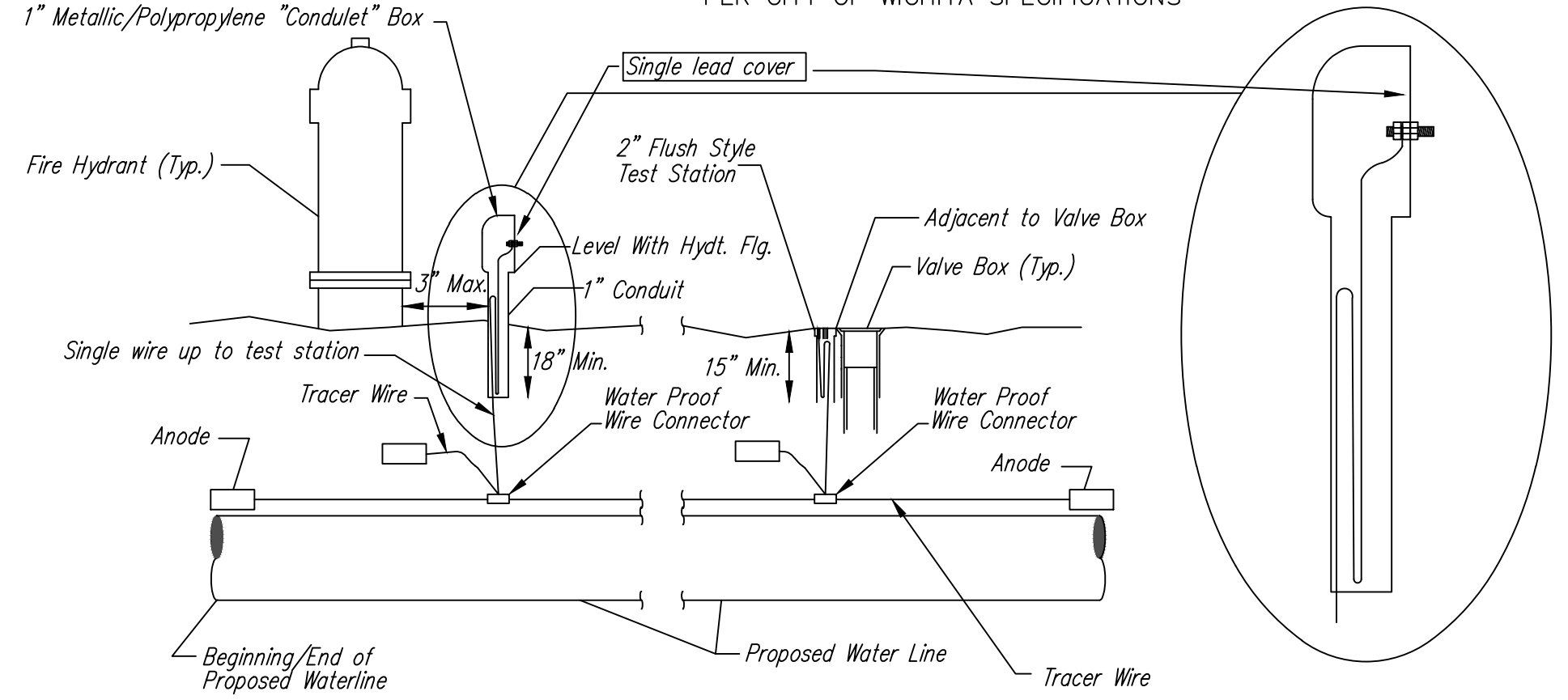
- MATERIALS LIST**
- 1- MJ ANCHOR TEE OR TANGENTIAL OUTLET (6" x 6")
 - 1- 6" MJ GATE VALVE
 - 1- 6" VALVE BOX AND VALVE STEM EXTENSION IF REQUIRED *
 - 6" DICL SJ PIPE (LENGTH VARIABLE)
 - 1- FIRE HYDRANT
 - 1- 6" ANCHOR COUPLING*
 - 2- 90° BENDS*
 - 6" DICL PIPE WITH ADEQUATE JOINT RESTRAINT *
 - CONCRETE BLOCKING (AS REQUIRED)
 - RIVER WASHED PEA GRAVEL (AS REQUIRED)

* IF THE REQUIRED HYDRANT BURY IS IN EXCESS OF 5', BUT LESS THAN 7', CONTRACTOR SHALL USE STANDARD 5' HYDRANT BURY AND HYDRANT BARREL EXTENSIONS AS NECESSARY. IF THE REQUIRED HYDRANT BURY IS GREATER THAN 7', CONTRACTOR SHALL USE 5' HYDRANT BURY, 2-MJ 90° BENDS, 6" ANCHOR COUPLING AND 6" DICL PIPE AS NECESSARY FOR VERTICAL ADJUSTMENT. THE CONTRACTOR SHALL PROVIDE ADEQUATE THRUST BLOCKING AT HYDRANT AND MEGALUGS, OR SIMILAR RESTRAINT BETWEEN 90° BENDS TO SECURE ALL FITTINGS DURING TESTING AND OPERATION. THE CONTRACTOR SHALL PROVIDE A VALVE STEM EXTENSION PER DETAIL THIS SHEET.

** CAUTION: WEEP HOLES TO BE KEPT CLEAR DURING CONSTRUCTION AND BACKFILL. CONCRETE FOR THRUST BLOCKING SHALL NOT OBSTRUCT WEEP HOLES. PLACE 1 CUBIC FOOT OF RIVER WASHED PEA GRAVEL AROUND EACH WEEP HOLE.

CONCRETE THRUST BLOCKING SHALL BE KEPT CLEAR OF BOLTS, NUTS, AND MJ ACCESSORIES.

FIRE HYDRANT ASSEMBLY
PER CITY OF WICHITA SPECIFICATIONS



TRACER WIRE
Conductive type pipe locator/tracer wire shall be install to locate all waterline pipe regardless of pipe material. The wire shall extend the entire length of the proposed pipe. The wire shall be taped to the waterline and pulled with the pipe. A waterproof connector shall be used at splice locations. A complete list of approved tracer wire and waterproof connectors can be found on the City of Wichita's website at www.wichita.gov.

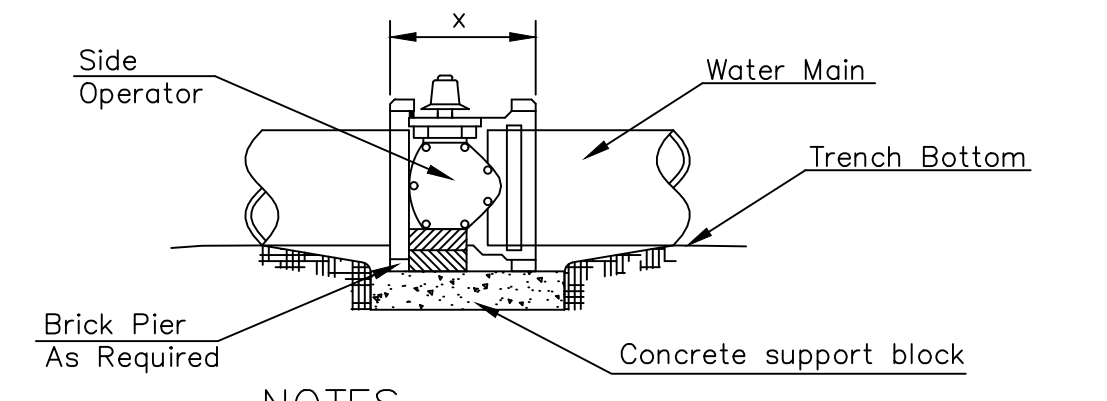
WIRES
The tracer wire shall be Blue No. 12 AWG CCS with 45 mil HDPE insulation. To allow for grade adjustment, a minimum of 12" of excess wire shall be coiled at the bottom of the test station for all wires. Wire connectors shall be installed per manufacturer recommendations. Contractor shall attach wire being installed with proposed water main to any tracer wire installed with adjacent waterline projects.

TEST STATIONS
The test station for fire hydrant application shall be a 1" "condulet" style station as manufactured by AGRA Industries with a removable solid cover having a single lead extending from the face or approved equal. The "conduit" style test station shall be attached to a 1" rigid galvanized conduit with a minimum length of 36" and plastic end bushing. The flush style shall have the word "WATER" stamped or molded into the lid. The test station for valve applications shall be a 2" flush style test station with wire connector on lid. Model # T2PH7B1LP Handley Industries or CD14*TP SnakePit as manufactured by Copperhead Industries or approved equal. The flush style shall have the word "WATER" stamped or molded into the lid. All test stations shall be manufactured using molded blue tops or sufficiently coated with blue enamel paint. The tracer wire and the anode wire shall be install to allow 12" of wire within the test station. The location of all test stations shall be recorded, and shown in the as-built drawings. Flush style test stations shall not be installed in pavement or sidewalk unless approved by the Engineer. Contractor shall extend tracer wire & move flush mount test station to nearest location out of pavement or sidewalk.

ANODES
The anodes shall be 3 lb. bare zinc or magnesium. The anodes shall be buried at the same elevation as the waterline at each test station. The anodes shall be connected to 12 AWG CCS which shall be extended to the test station.

TRACER WIRE DETAIL
COST IS SUBSIDIARY TO PIPE INSTALLATION

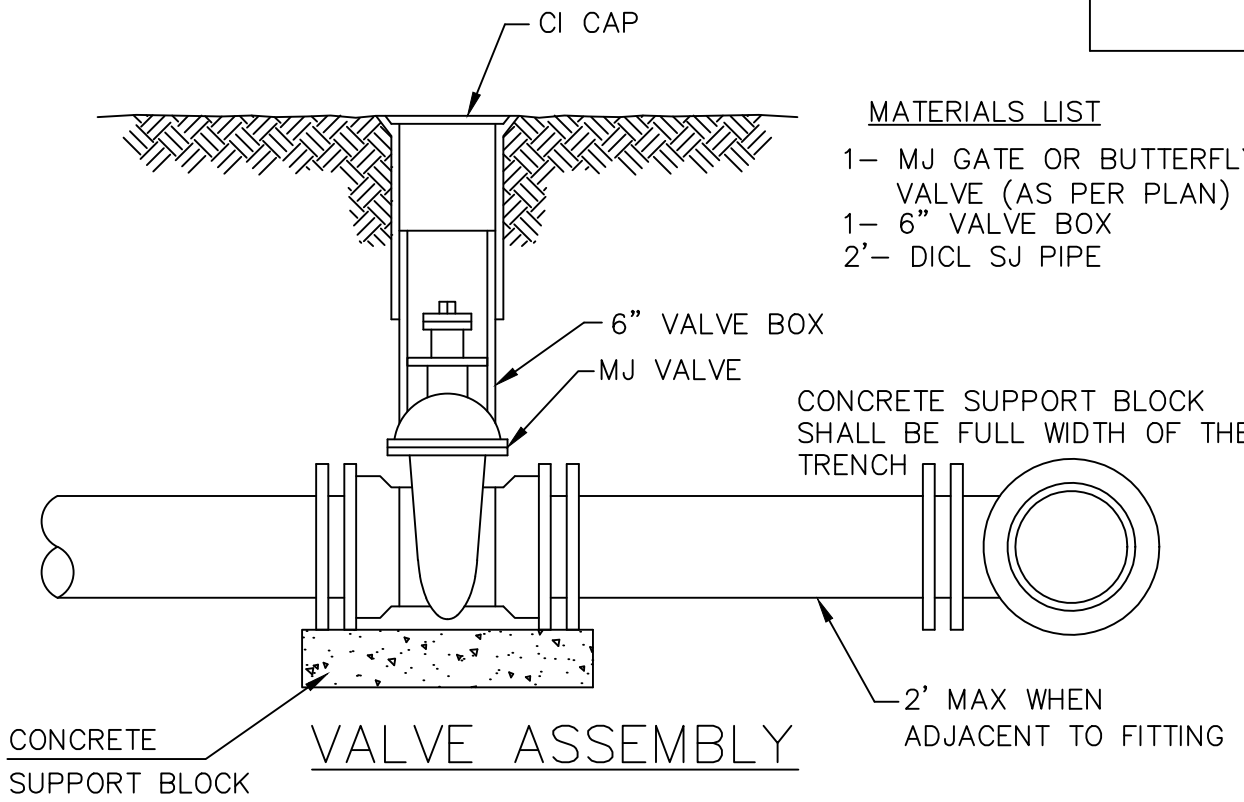
FIRE HYDRANTS REQUIRED				
STATION	BURY LINE ELEVATION	TOP OF PIPE ELEVATION	FIRE HYDRANT BURY REQUIRED*	VALVE STEM EXT. REQUIRED (ft)*
3+65.51 WL1	1376.32	1371.94	N/A	



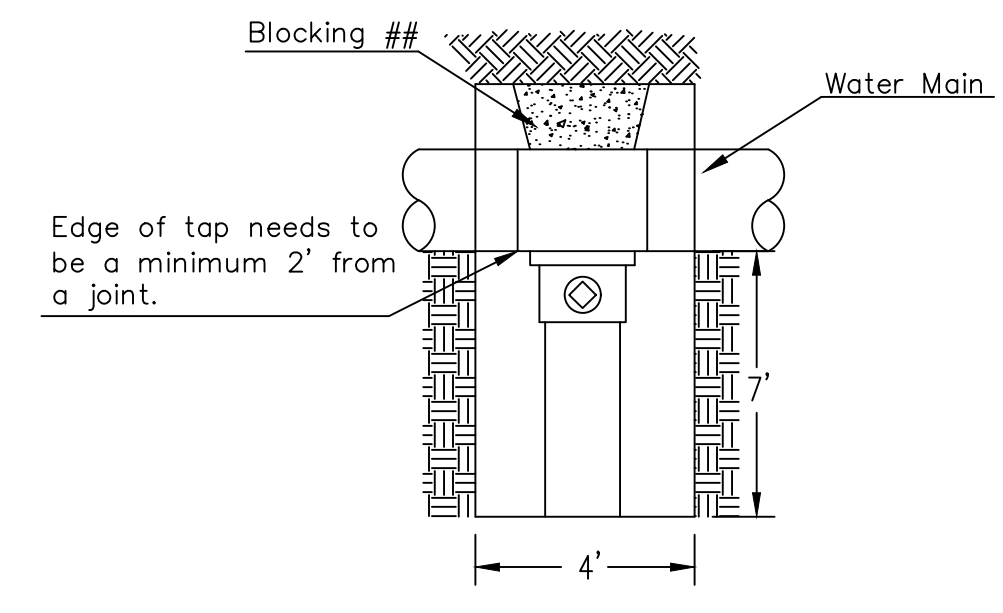
NOTES

- This detail covers Butterfly Valve installation, inclusive, regardless of type of pipe or joint used. 24" and larger lines to be detailed on plans.
- 6" Valve Box and Cover required per City of Wichita Std. Specifications.
- Conc. Support Block to be full width of trench.

CONCRETE SUPPORT BLOCKING FOR BUTTERFLY VALVE INSTALLATION

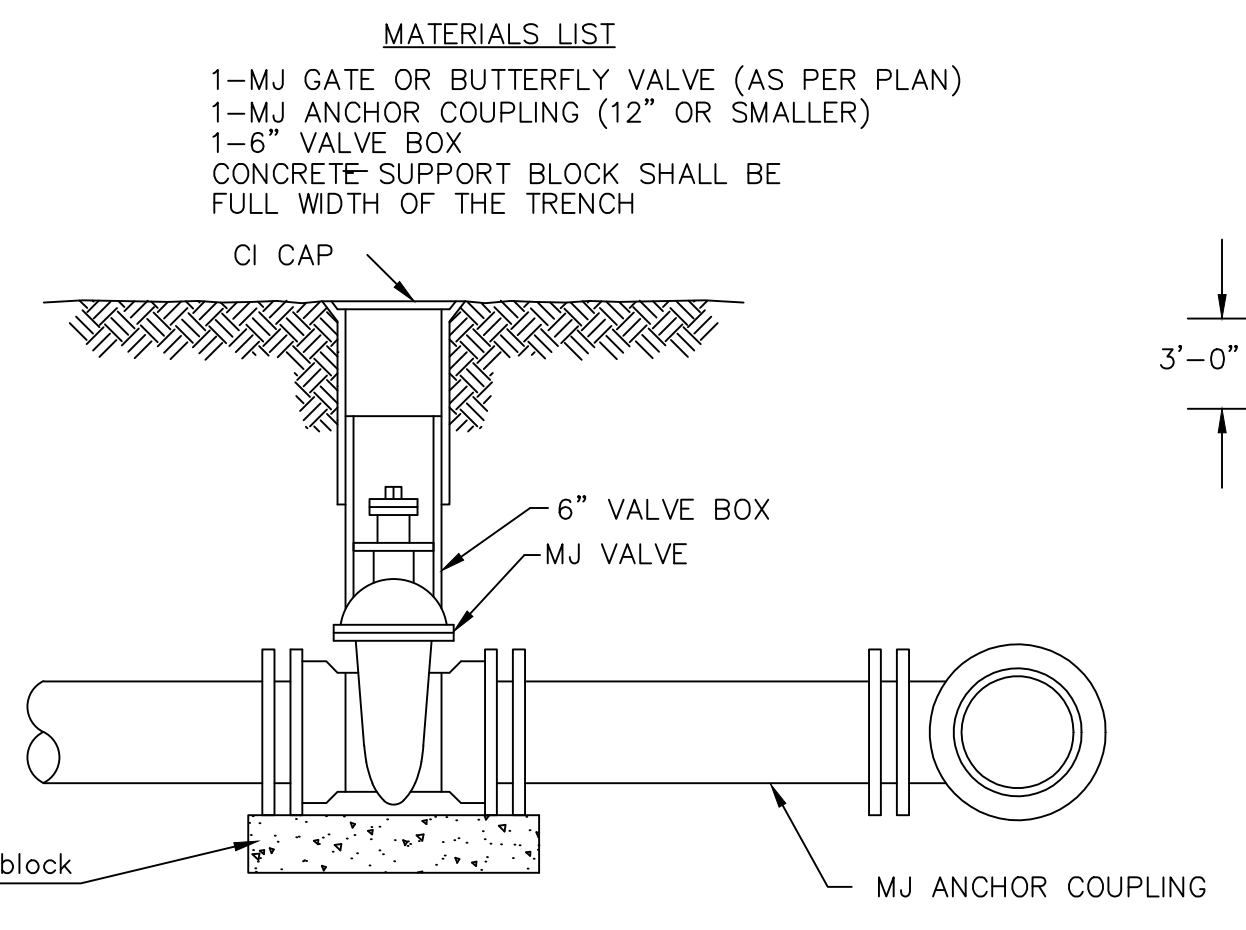


- MATERIALS LIST**
- 1- MJ GATE OR BUTTERFLY VALVE (AS PER PLAN)
 - 1- 6" VALVE BOX
 - 2- DICL SJ PIPE

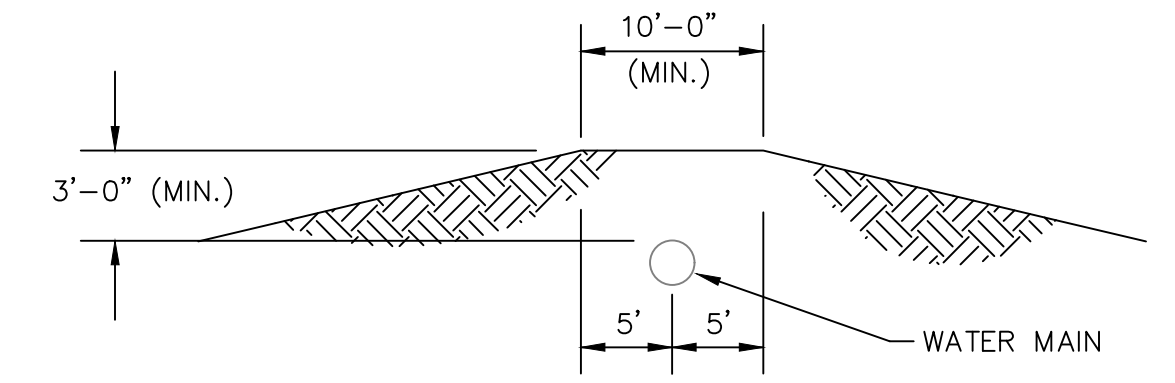


CITY TAP

When the City of Wichita makes tap, blocking is to be done by Contractor

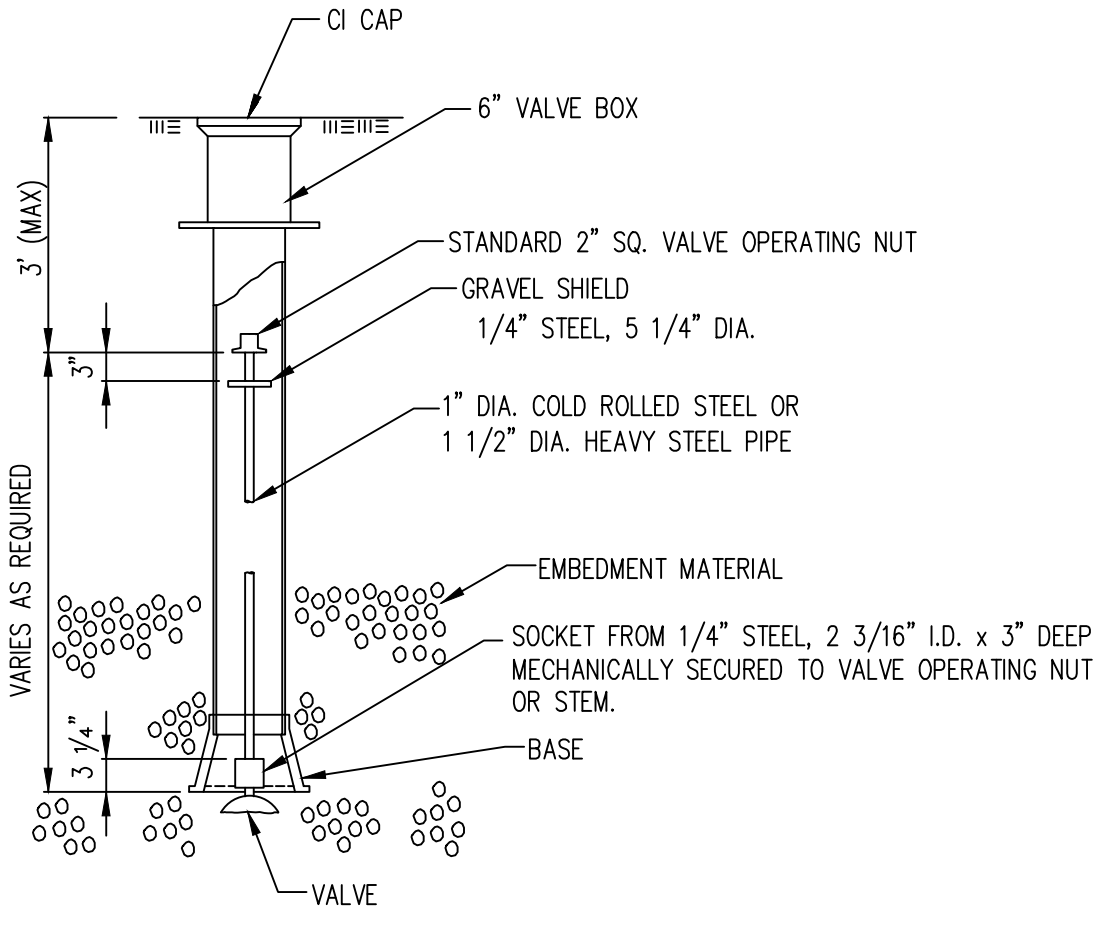


- MATERIALS LIST**
- 1-MJ GATE OR BUTTERFLY VALVE (AS PER PLAN)
 - 1-MJ ANCHOR COUPLING (12" OR SMALLER)
 - 1-6" VALVE BOX
 - CONCRETE SUPPORT BLOCK SHALL BE FULL WIDTH OF THE TRENCH



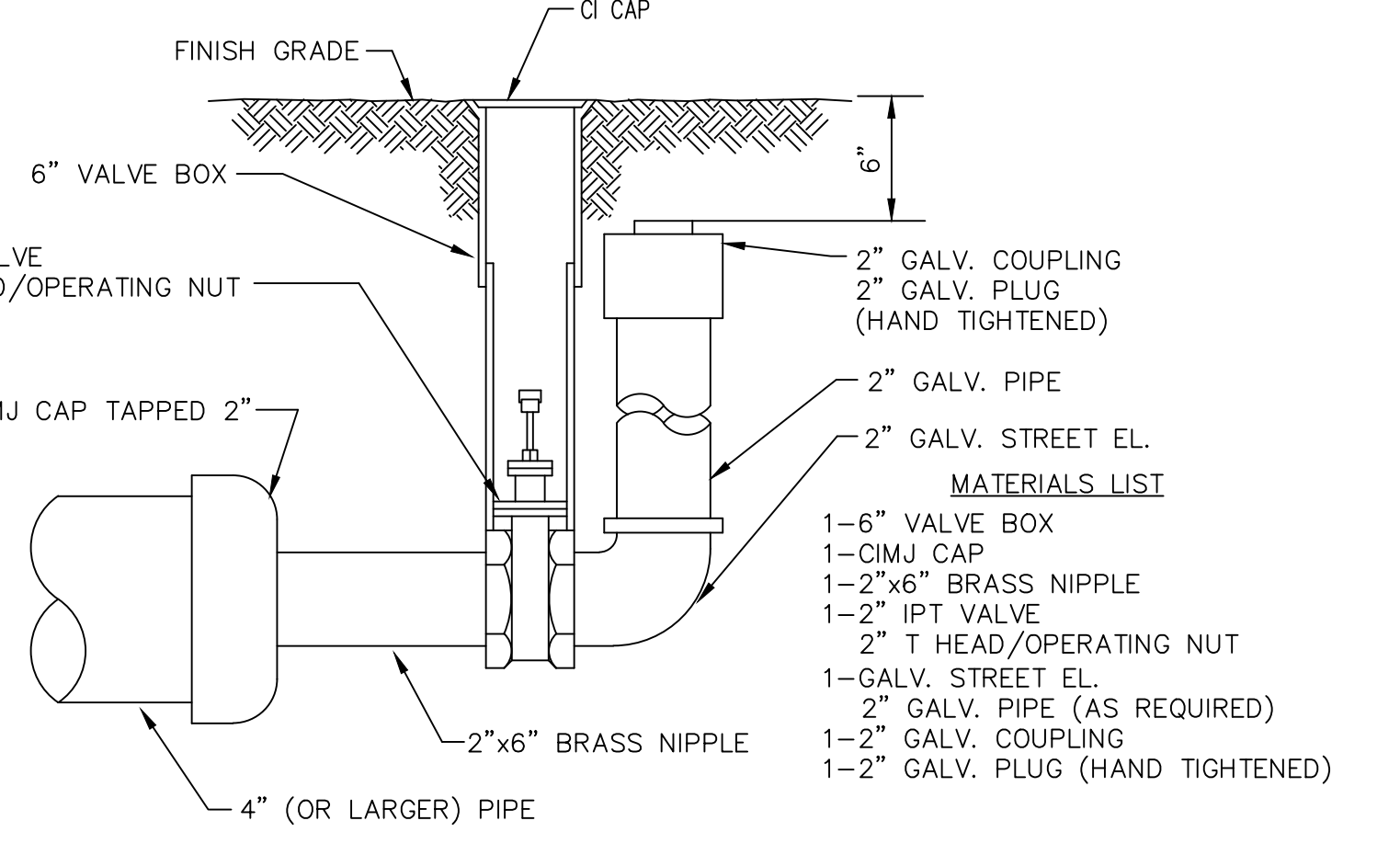
PROTECTIVE FILL DETAIL

MINIMUM PROTECTIVE FILL SHALL BE PROVIDED IN ALL INSTANCES WHERE COVER OVER THE PROP. WATER LINE IS LESS THAN 3'. (COST SUBSIDIARY TO PIPE INSTALLATION)

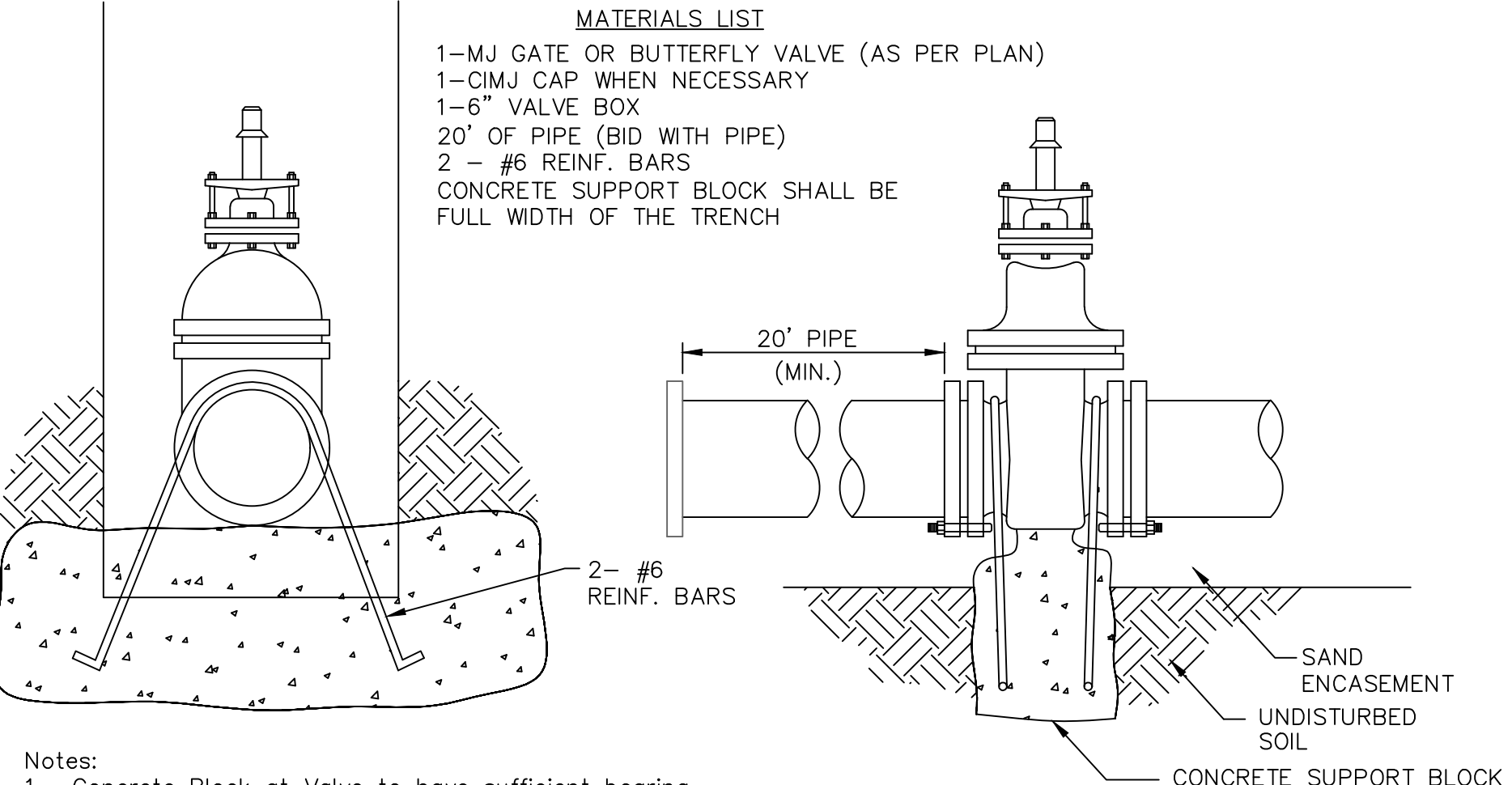


VALVE STEM EXTENSION DETAIL

NOTE: ONE VALVE STEM EXTENSION FOR EACH VALVE BURIED GREATER THAN 5'.



2" BLOWOFF ASSEMBLY

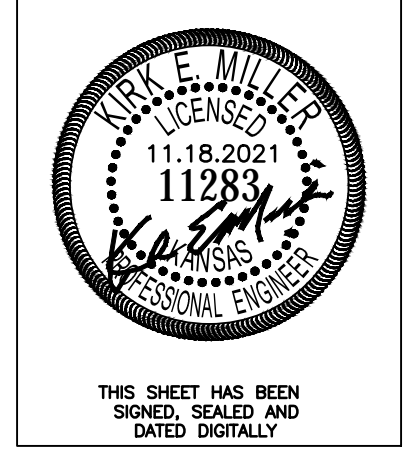


- MATERIALS LIST**
- 1-MJ GATE OR BUTTERFLY VALVE (AS PER PLAN)
 - 1-CIMJ CAP WHEN NECESSARY
 - 1-6" VALVE BOX
 - 20' OF PIPE (BID WITH PIPE)
 - 2- #6 REINF. BARS
 - CONCRETE SUPPORT BLOCK SHALL BE FULL WIDTH OF THE TRENCH

Notes:

- Concrete Block at Valve to have sufficient bearing in undisturbed soil to prevent thrust movement as shown in table at right. Field Engineer to determine thrust loading of undisturbed soil and final size of thrust block.
- The thrust block shall be constructed such that bolts, nuts, and other MJ accessories are kept clear of concrete.
- All valves at dead ends and at other locations as called out on the plans shall be blocked as shown here.

THRUST AT VALVES	
VALVE	THRUST AT 150 #/in ²
4"	1809 lbs.
6"	4245 lbs.
8"	7540 lbs.
12"	16965 lbs.



STANDARD WATER ASSEMBLY DETAIL

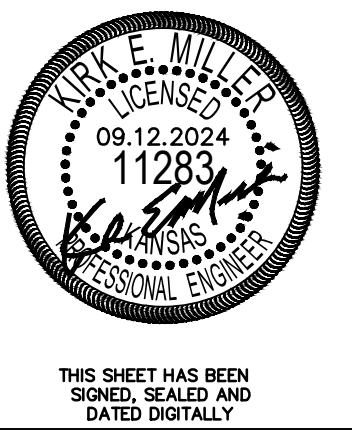
CITY ENGINEER
GARY JANZEN, P.E.

PROJECT NUMBER	OCA NUMBER	DATE
----------------	------------	------

CITY ENGINEER'S OFFICE
CITY HALL - SEVENTH FLOOR
455 NORTH MAIN STREET
WICHITA, KANSAS 67202-1620
(316) 268-4501

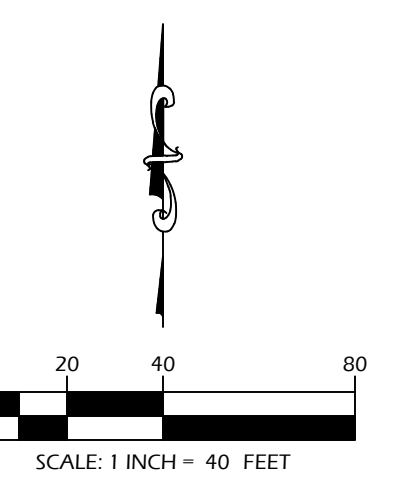
SHEET
4.0

REVISED: OCTOBER 2016



THIS SHEET HAS BEEN SIGNED, SEALED AND DATED DIGITALLY

EROSION CONTROL PLAN
KILLARNEY PLAZA 2ND DUPLEXES
WICHITA, KANSAS



REVISIONS

KEM PROJ. 23175	DATE 11.2023
DESIGNED KEM	DRAWN JW

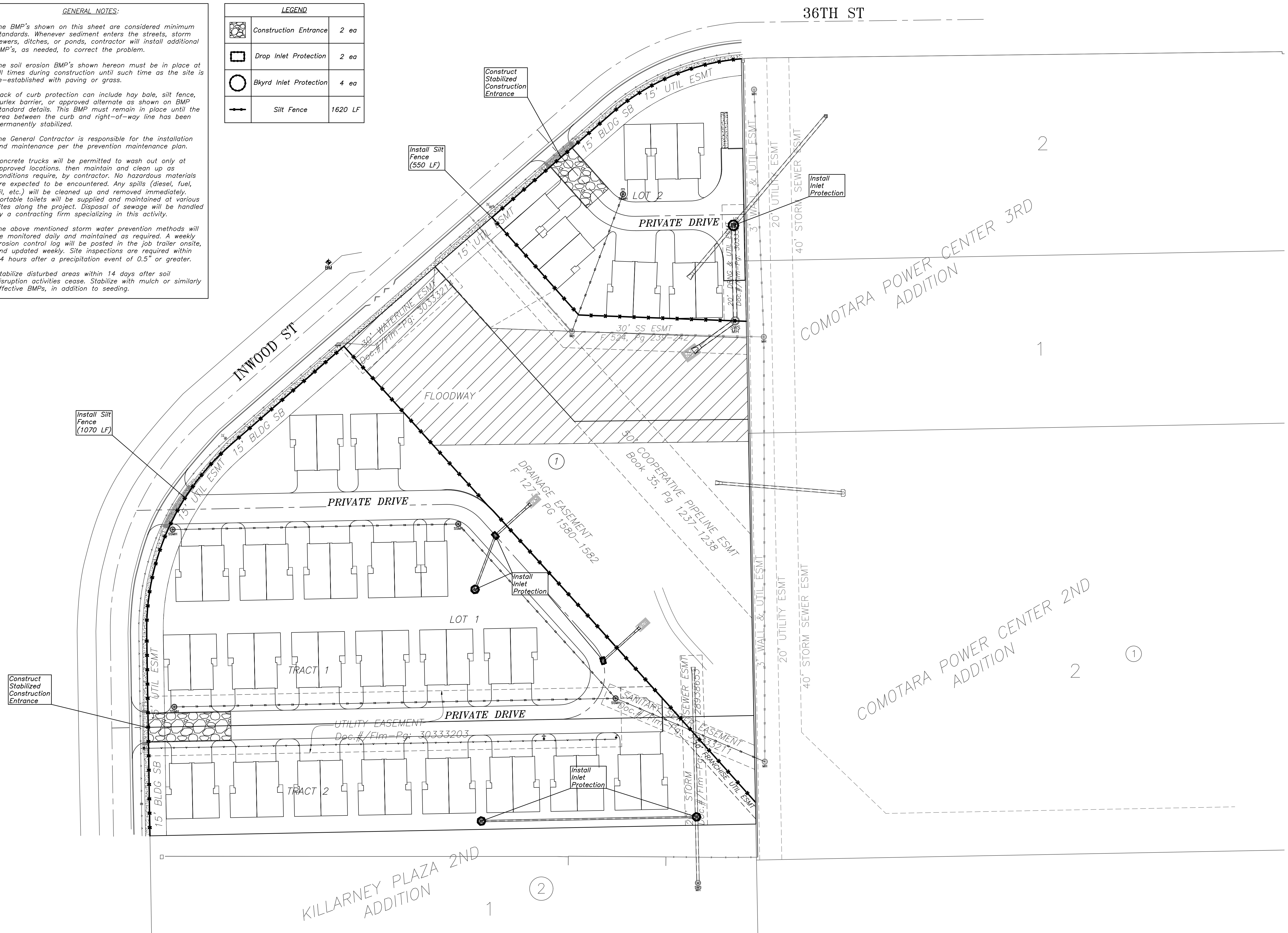
Erosion Control Plan

SHEET **5.0**

- GENERAL NOTES:**
- The BMP's shown on this sheet are considered minimum standards. Whenever sediment enters the streets, storm sewers, ditches, or ponds, contractor will install additional BMP's, as needed, to correct the problem.
 - The soil erosion BMP's shown hereon must be in place at all times during construction until such time as the site is re-established with paving or grass.
 - Back of curb protection can include hay bale, silt fence, Curlex barrier, or approved alternate as shown on BMP standard details. This BMP must remain in place until the area between the curb and right-of-way line has been permanently stabilized.
 - The General Contractor is responsible for the installation and maintenance per the prevention maintenance plan.
 - Concrete trucks will be permitted to wash out only at approved locations, then maintain and clean up as conditions require, by contractor. No hazardous materials are expected to be encountered. Any spills (diesel, fuel, oil, etc.) will be cleaned up and removed immediately. Portable toilets will be supplied and maintained at various sites along the project. Disposal of sewage will be handled by a contracting firm specializing in this activity.
 - The above mentioned storm water prevention methods will be monitored daily and maintained as required. A weekly erosion control log will be posted in the job trailer onsite, and updated weekly. Site inspections are required within 24 hours after a precipitation event of 0.5" or greater.
 - Stabilize disturbed areas within 14 days after soil disruption activities cease. Stabilize with mulch or similarly effective BMPs, in addition to seeding.

LEGEND

	Construction Entrance	2 ea
	Drop Inlet Protection	2 ea
	Bkyrd Inlet Protection	4 ea
	Silt Fence	1620 LF



KILLARNEY PLAZA SECOND ADDITION

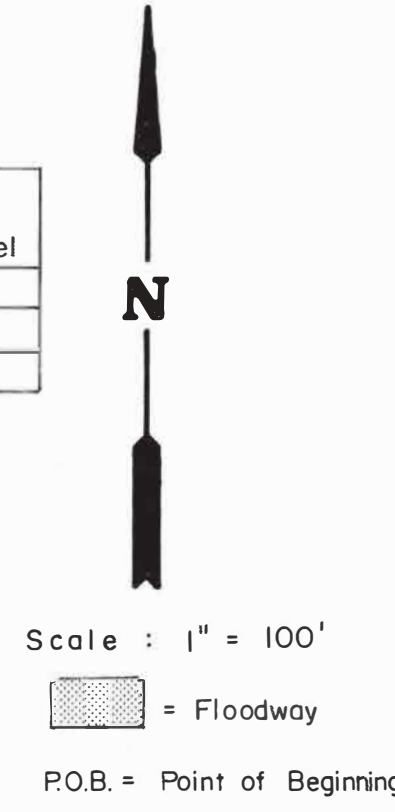
AN ADDITION TO WICHITA, SEDGWICK COUNTY, KANSAS

FOR
REFERENCE
ONLY

Lot	Block	City Datum	Mean Sea Level
3	I	192.5	1379.9
4	I	192.5	1379.9
6-II	I	195.0	1382.4

BENCH MARKS:

- B.M. #1 City Disc in S.W. cor. of RCB under Rock Road = 50' N of Centerline 34th St. N. Elev. = 200.18
- B.M. #2 City Disc in Retaining Wall at NE cor. of RCB under Rock Road = 100' S. of 35th St. N. Elev. = 198.29
- B.M. #3 " " cut on top curb at W. end of N.W. Return at 36th St. N. & Inwood. Elev. = 183.53

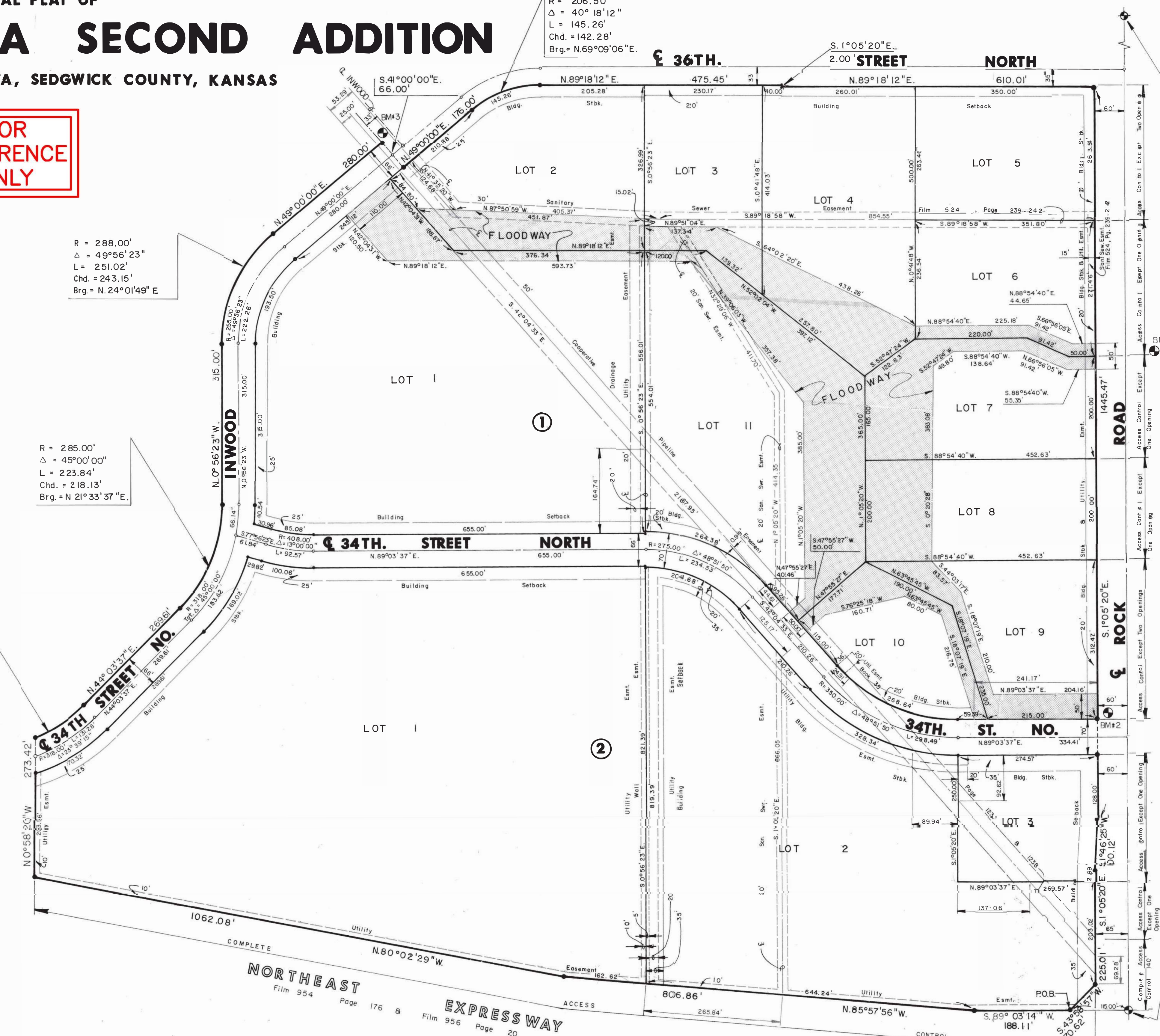


R = 288.00'
 Δ = 49°56'23"
 L = 251.02'
 Chd. = 243.15'
 Brg. = N 24°01'49" E

R = 285.00'
 Δ = 45°00'00"
 L = 223.84'
 Chd. = 218.13'
 Brg. = N 21°33'37" E

R = 285.00'
 Δ = 23°39'15"
 L = 117.66'
 Chd. = 116.83'
 Brg. = N 55°53'14" E

R = 206.50'
 Δ = 40°18'12"
 L = 145.26'
 Chd. = 142.28'
 Brg. = N 69°09'06" E



N.E. Cor., N.E. 1/4
 Sec. 31, T.26S., R.2 E.
 6th. P.M.

S.E. Cor., N.E. 1/4
 Sec. 31, T.26S., R.2 E.,
 6th. P.M.

E 4-30 A

This digital plat record accurately reproduces in all details the original plat filed with the Sedgwick County Register of Deeds. Digitized under the supervision of Register of Deeds Bill Meek by Sedgwick County Geographic Information Systems.

Bill Meek, Register of Deeds
 Digitized rendition of original signature

6.0

FOR
REFERENCE
ONLY

LOT SPLIT

Part of Lot 1, Block 1
Killarney Plaza Second Addition
Wichita, Sedgwick County, Kansas

State of Kansas)
County of Sedgwick) SS

LEGAL DESCRIPTION:

TRACT 1

A portion of Lot 1, Block 1, Killarney Plaza Second Addition to Wichita, Sedgwick County, Kansas described as follows:
Commencing at the Northwest corner of Comotara Power Center, an Addition to Wichita, Sedgwick County, Kansas; Thence S01°04'29"E on an assumed bearing of along the West line of said Comotara Power Center for a distance of 326.72 feet to the north line of said Lot 1 for a POINT OF BEGINNING; Thence continuing S01°04'29"E along the West line of said Comotara Power Center for a distance of 366.69 feet; Thence S88°53'25"W for a distance of 549.02 feet to the West line of said Lot 1; Thence N00°55'46"W along the West line of said Lot 1 for a distance of 183.46 feet to a corner in said Killarney Plaza Second Addition; Thence on a tangential curve to the right along the West line of said Lot 1 for a distance of 193.48 feet to a corner in said Killarney Plaza Second Addition, said curve having a radius of 222 feet, a chord length of 187.41 feet, and a chord bearing of N24°05'52"E; Thence N48°55'35"E along the West line of said Lot 1 a distance of 244.90 feet to the Northwest corner of said Lot 1; Thence Southeast along the North line of said Lot 1 for a distance of 188.67 feet; Thence East along the North Line of said Lot 1 for a distance of 157.41 feet to The Point Of Beginning;
EXCEPT
The South 98.33 feet thereof.
Said tract contains 3.75 acres more or less.

TRACT 2

The South 98.33 feet of the tract more particularly described as:
A portion of Lot 1, Block 1, Killarney Plaza Second Addition to Wichita, Sedgwick County, Kansas described as follows:
Commencing at the Northwest corner of Comotara Power Center, an Addition to Wichita, Sedgwick County, Kansas; Thence S01°04'29"E on an assumed bearing of along the West line of said Comotara Power Center for a distance of 326.72 feet to the north line of said Lot 1 for a POINT OF BEGINNING; Thence continuing S01°04'29"E along the West line of said Comotara Power Center for a distance of 366.69 feet; Thence S88°53'25"W for a distance of 549.02 feet to the West line of said Lot 1; Thence N00°55'46"W along the West line of said Lot 1 for a distance of 183.46 feet to a corner in said Killarney Plaza Second Addition; Thence on a tangential curve to the right along the West line of said Lot 1 for a distance of 193.48 feet to a corner in said Killarney Plaza Second Addition, said curve having a radius of 222 feet, a chord length of 187.41 feet, and a chord bearing of N24°05'52"E; Thence N48°55'35"E along the West line of said Lot 1 a distance of 244.90 feet to the Northwest corner of said Lot 1; Thence Southeast along the North line of said Lot 1 for a distance of 188.67 feet; Thence East along the North Line of said Lot 1 for a distance of 157.41 feet to The Point Of Beginning.
Said tract contains 1.23 acres more or less.

Keith A. Severns P.L.S. #1355
Not Original Unless Signed in Blue Ink.

City of Wichita)
Sedgwick County) SS
State of Kansas)

Lot Split No. _____
Copy _____ of 2

I, Scott A. Wadle, Director of Planning, Wichita-Sedgwick County Metropolitan Area Planning Department, do hereby certify under authority granted in the Subdivision Rules and Regulations that the lot split to which this stamp is affixed has been approved for recording.

Given under my hand and seal this _____ day of _____, 20____.

WICHITA-SEDGWICK COUNTY METROPOLITAN AREA PLANNING DEPARTMENT.

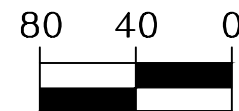
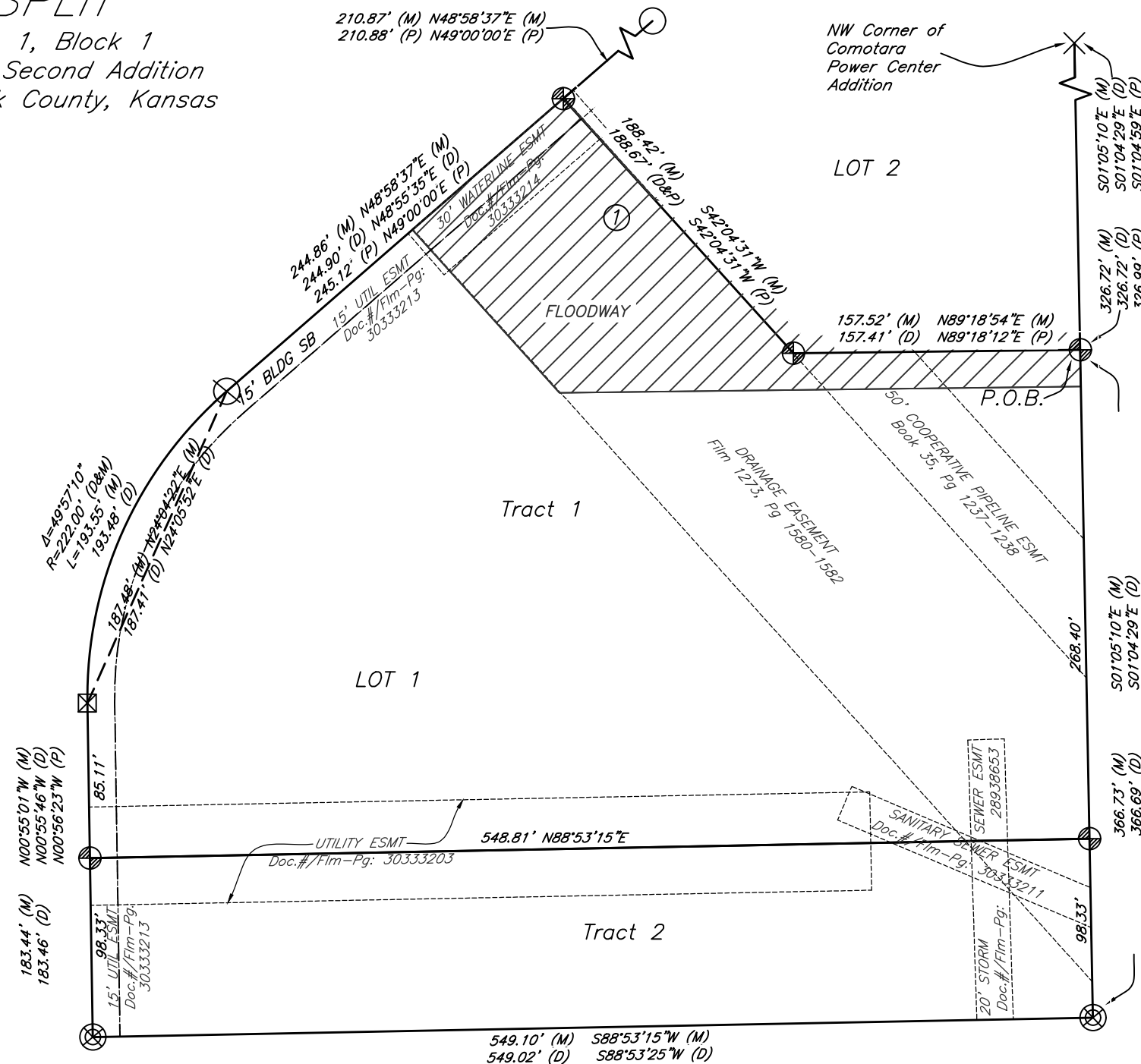
Scott A. Wadle, Director of Planning

LEGEND
Boundary symbols

- (P) = Platted
- (M) = Measured
- (C) = Calculated
- (CM) = Calculated Measured
- (D) = Described
- ⊕ = Set KEMPA R4 (1/2") Rebar
- ⊙ = Found R4 (1/2") Rebar - Unknown
- ⊗ = Found R4 (1/2") Rebar - TERRA-TECH
- ⊗ = Found R5 (5/8") Rebar - Unknown
- ⊗ = Found R5 (5/8") Rebar - MKEC
- ⊗ = Found Cross

Reviewed in accordance with K.S.A.
58-2005 on this _____ day
of _____, 20____.

Tricia L. Robello, P.S. #1246
Deputy County Surveyor
Sedgwick County, Kansas



(IN FEET)
1 inch = 80 ft.

23175 \ Killarney Plaza 2nd Addition Prepared: 09/12/2024

KEMILLER
ENGINEERING PA

117 E. Lewis, Wichita, KS 67202 (316)264-0242