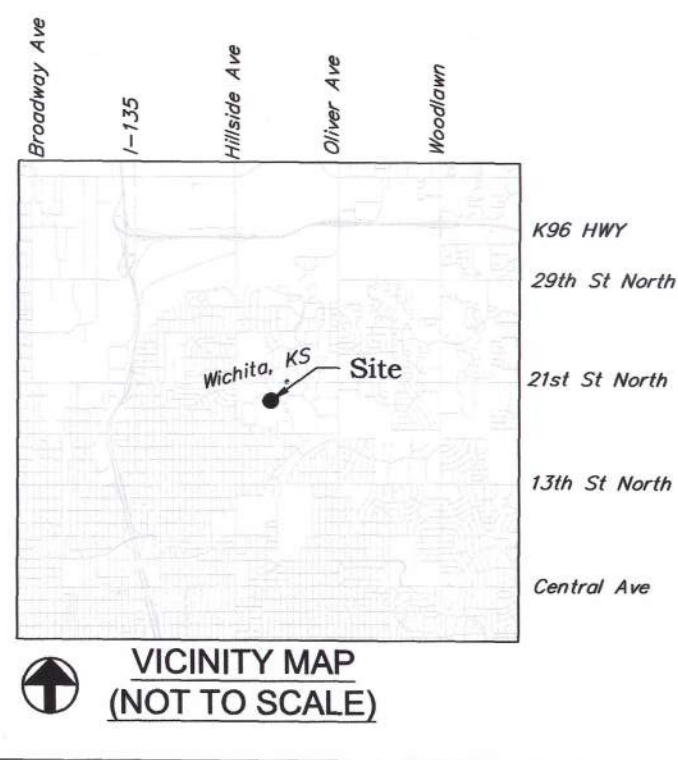


TOPOGRAPHIC SURVEY FOR WICHITA STATE UNIVERSITY WILKENS STADIUM



CP-102 (Pnt #1402)
#4 Iron Bar w/ blue "Merestone GPS Control" cap
N: 382,965.8643 E: 17,560,286.2470

CP-103 (Pnt #1407)
MAG Nail Set in Asphalt
N: 382,974.8270 E: 17,560,493.8158

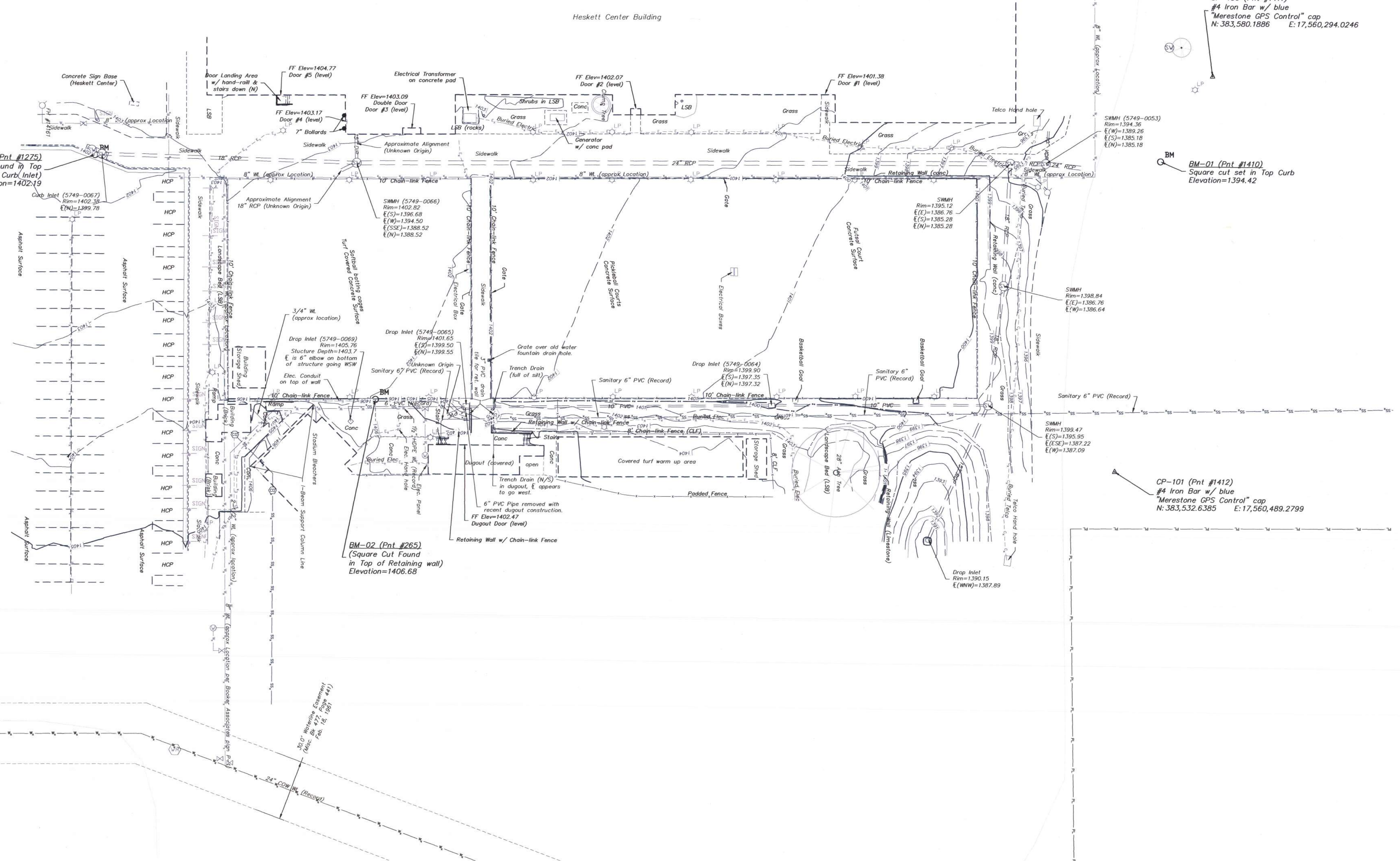
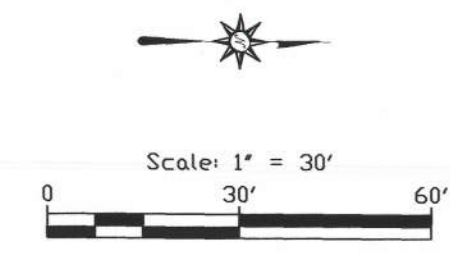
CP-100 (Pnt #1411)
#4 Iron Bar w/ blue
"Merestone GPS Control" cap
N: 383,580.1886 E: 17,560,294.0246

BM-01 (Pnt #1410)
Square cut set in Top Curb
Elevation=1394.42

CP-101 (Pnt #1412)
#4 Iron Bar w/ blue
"Merestone GPS Control" cap
N: 383,532.6365 E: 17,560,489.2799

BM-02 (Pnt #265)
Square Cut Found in Top of Retaining wall
Elevation=1406.68

BM-03 (Pnt #1275)
Square Cut Found in Top
East Mid-point of Curb Inlet
Elevation=1402.19



Legend:	
△	Control Point
○	Benchmark
⊙	Communication Pedestal
⊕	Telco Manhole
⊙	Guy Anchor
⊙	Light Pole
⊙	Utility Pole
⊙	Sign
⊙	Sanitary Sewer Manhole
⊙	Cleanout
⊙	Water Meter
⊙	Water Valve
⊙	Fire Hydrant
⊙	Storm Water Manhole
⊙	Storm Water Catch Basin
(P)	Per Plat
(M)	Measured
(CM)	Calc'd from Measured
(D)	per Deed (as described)
⊙	Tree
⊙	Gas Meter
⊙	Traffic Control Box
⊙	Monitoring Well
---	Building Line
---	Building Overhang/Canopy
---	Building Setback Line
---	Overhead Communication Line
---	Underground Communication Line
---	Underground Gas Line
---	Overhead Electric Line
---	Underground Electric Line
---	Parking Strip
---	Asphalt Pavement Edge
---	Concrete Pavement Edge
---	Concrete Curb & Gutter
---	Gravel Edge
---	Existing Fence
---	Landscape Bed
---	Wall/Retaining Wall
---	Sanitary Sewer Line
---	Storm Water Pipe
---	Sidewalk (Concrete)
---	Ground Contour Index (5')
---	Ground Contour Minor (1')

SURVEY NOTES:

- This Topographic survey does not constitute a Boundary Survey and should not be relied upon for such.
- Horizontal Coordinate System: USA COUNTY KS/KRCS 17 Wichita NAD83 (2011) LCC (US FT)
- Vertical Datum: NAVD88 (Geoid18)

UTILITY NOTES:

- Kansas One Call System : (800) 344-7233 or 811 Ticket No. 23475479.
- The utilities as shown on this drawing were developed from the information available (existing utility maps, aboveground observations and or surface markings placed on the ground by the utility company or a representative thereof). This company has made no attempt to excavate or go below surface to locate utilities and does not extend or imply a guaranty or warranty as to the exact location of or complete inventory of utilities in this area. It shall be the contractors responsibility to verify the location and depth of all utilities (whether shown or not) prior to excavation or construction and to protect said utilities from damage.

Topographic Survey Certification

We, MERESTONE SURVEYING, certify that this Topographic Survey project was completed under my direct and responsible charge from an actual survey made under my supervision; that the original data was obtained on September 8th, 2023; that the survey was completed on September 19th, 2023; and all coordinates are based on NAD83 Kansas Regional Coordinate System (KRCS), Zone 17, in US Survey Feet and all elevations are based on the NAVD88 datum with Geoid18 model applied.



Todd P. Hornbaker
Kansas P.S. #1532,
CLS #179

	TOPOGRAPHIC SURVEY Wilkens Stadium WSU Campus 1845 FAIRMOUNT WICHITA, KS 67260	
	216 W. Rosewood St., Rose Hill, KS 67133 P:316-425-7770 F:316-425-7773 ENGINEERING SURVEYING GIS MAPPING	
PROJECT NUMBER 23-09-384	DESIGN BLP	DRAWN TPH
REVISIONS:	APPROVED BLP	DATE 10/2/23
SCALE AS NOTED		SHEET 1 OF 1