



Scott Preston Evans
 Civil Engineer
 KS24423

Design Architect
 CD Architects
 3750 Wilshire Boulevard, Suite 550
 Los Angeles, CA 90036
 P. 323.525.0500

Civil Engineer / Landscape Architect
 MKEC Engineering
 411 North Webb Road
 Wichita, KS 67206
 P. 316.694.9000

Structural Engineer
 KFFY Consulting Engineers
 1630 Des Peres Road, Suite 100
 St. Louis, MO 63131
 P. 314.835.0524

MEP Engineer
 Henderson Engineers
 6345 Lenexa Drive
 Lenexa, KS 66214
 P. 913.742.5000

Fire Sprinkler Design
 FSC
 6675 West 96th Street
 Overland Park, KS 66212
 P. 913.722.3473

Acoustic / IT / AV
 NWS Engineering & Technology
 1501 Riverside Street, Suite 300
 Pittsburgh, PA 15233
 P. 402.408.4104

Branding / Signage / Wayfinding
 Dimensional Innovations
 2421 Merriam Drive
 Overland Park, KS 66203
 P. 913.384.5488

Building Envelope Consultant
 WSE
 30 N La Salle Street, Suite 4200
 Chicago, IL 60602
 P. 312.872.8150

Revisions:
 07.08.2024 ASI 001

Department of Administration
 Office of Facilities & Procurement
 Design, Construction &
 Management
 700 SW Harrison, Suite 1200
 Topeka, Kansas 66603
 Phone 785-296-9899

WICHITA STATE UNIVERSITY AND
 THE UNIVERSITY OF KANSAS MEDICAL CENTER
WICHITA BIOMEDICAL CAMPUS - PHASE 1
 201 S. TOPEKA AVENUE
 WICHITA, KANSAS 67202
 DATE: 08.02.2024
 DRAWN BY: BMS

PPS TITLE SHEET
 A-014707
 C201
 BID PACKAGE #1



PRIVATE SANITARY SEWER
 TO SERVE **201 S Topeka**
WICHITA BIOMEDICAL CAMPUS

THE CITY OF WICHITA, KANSAS
 PAUL GUNZELMAN, P.E. - CITY ENGINEER
 PROJECT NO. 2024-006371PPS
 ORG CODE 53030982

AS-BUILT PLANS

UTILITY CONTRACTOR: McCULLOUGH EXCAVATION.
SUPERINTENDENT: ROB GRAY
CONSTRUCTION STAKING: BAUGHMAN COMPANY.
INSPECTOR: BEAU GIBLER
AS-BUILTS BY: BEAU GIBLER & LARRY POWELL
DATE: 1-8-2025

Began: 8-19-2024
Ended: 9-12-2024

SS MH Structure = Wichita Concrete Pipe.
MH Frame & Lid = Deeter.
20" PVC RJ Pipe = 172 LF
= Westlake Certa-Lok RJ
36" Steel Casing Pipe = Frank Black Pipe
& Supply Co.

BAUGHMAN COMPANY JOB #: 24-07-E833

GENERAL NOTES

- THE CONTRACTOR SHALL COMPLY WITH ALL APPLICABLE SAFETY REGULATIONS. ALL CONSTRUCTION SHALL BE COMPLETED FOLLOWING CURRENT CITY STANDARD SPECIFICATIONS AND SPECIAL PROVISIONS.
- CONTRACTOR WILL BE REQUIRED TO PROVIDE NOTICE TO UTILITY COMPANIES A MINIMUM OF SEVENTY-TWO (72) HOURS PRIOR TO ANY EXCAVATION. AS FOLLOWS:
 KANSAS ONE-CALL 667-2470
 THE CONTRACTOR MUST NOTIFY THE FOLLOWING IN CASE OF AN EMERGENCY:
 AT&T 1-800-248-8484
 BLACK HILLS ENERGY (GAS) 1-800-694-6989
 CITY OF WICHITA WATER & SEWER 1-316-268-4021
 CITY OF WICHITA STORMWATER 1-316-268-4030
 CITY OF WICHITA TRAFFIC 1-316-268-4034
 COX COMMUNICATIONS 1-888-248-5330
 KANSAS GAS SERVICE 1-888-482-4850
 EVERGY 1-800-544-4657
- UTILITY SERVICE LINES, POLES, ETC. THE PLANS SPECIFICALLY CALL FOR IDENTIFY A UTILITY TO BE ADJUSTED AS SHOWN ON THE PLANS. REPAIRS REQUIRED TO WORK AROUND EXISTING CONSTRUCTION.
- RUBBLE FROM THE REMOVAL OF THIS SHALL BE DISPOSED OF ON SITES TO ENGINEER AS TO SUITABILITY. APPROVED RUBBLE SHALL BE USED FOR CONSTRUCTION. KANSAS DEPARTMENT OF HEALTH AND WILL REQUIRE A KANSAS STATE BOULDER STATES OR WETLANDS IS SUBJECT TO STOCKPILED BEYOND APPROVED OR UNLESS BURIED IN A PREVIOUSLY AT
- TREES AND SHRUBS IN PUBLIC RIGHT-OF-WAY SHALL BE REMOVED BY THE CONTRACTOR WITH THE CITY ENGINEER'S APPROVAL. TREES AND SHRUBS WHICH ARE NOT DIRECT CONFLICT WITH PROPOSED NEW CONSTRUCTION SHALL BE SAVED AND PROTECTED FROM DAMAGE.
- THE CONTRACTOR SHALL GIVE ALL PROPERTY OWNERS AND/OR TENANTS OF DEVELOPED PROPERTY ADJUTING THE CONSTRUCTION OF THIS PROJECT A MINIMUM OF TEN (10) DAYS NOTICE PRIOR TO START OF CONSTRUCTION.
- THE CONTRACTOR SHALL BE RESPONSIBLE FOR PRESERVING PROPERTY IRONS. THE CONTRACTOR WILL BE REQUIRED TO RE-ESTABLISH ANY PROPERTY IRONS WHICH ARE DAMAGED OR DESTROYED BY HIS CONSTRUCTION OPERATIONS. SUCH IRONS SHALL BE RE-ESTABLISHED BY A LICENSED LAND SURVEYOR IN ACCORDANCE WITH STATE LAWS.
- THE ENGINEERING DIVISION SHALL FIELD LOCATE WATER VALVES ONE TIME DURING CONSTRUCTION WHEN REQUESTED BY THE CONTRACTOR. IT SHALL BE THE CONTRACTOR'S RESPONSIBILITY TO PRESERVE SUCH FIELD LOCATIONS DURING THE CONSTRUCTION PROCESS. WATER VALVES, VALVE BOXES OR FIRE HYDRANTS DAMAGED DURING CONSTRUCTION SHALL BE REPAIRED BY CONTRACTOR AT HIS OWN EXPENSE. VALVE BOXES AND WATER METERS WITHIN THE PROJECT LIMITS SHALL BE ADJUSTED TO MATCH FIELD GRADINGS BY THE CONTRACTOR.
- THE CONTRACTOR SHALL NOTIFY THE INSPECTING ENGINEER AND DAWNITA REINHARDT AT 650-610 WITH THE CITY OF WICHITA WITH THE ANTICIPATED CONSTRUCTION START DATE AND NOTIFY THEM OF PROJECT COMPLETION, STAKING AND INSPECTION FOR THIS PROJECT WILL BE THE RESPONSIBILITY OF THE CONTRACTOR.
- IF TRAFFIC WILL BE IMPACTED BY CONSTRUCTION, A TRAFFIC CONTROL PLAN MUST BE SUBMITTED AND APPROVED BY THE CITY TRAFFIC ENGINEER AT 650-610 BEFORE CONSTRUCTION CAN BEGIN. THE CONTRACTOR SHALL BE RESPONSIBLE FOR ALL TRAFFIC CONTROL MEASURES TO FACILITATE CONSTRUCTION. ALL CONSTRUCTION ZONE MARKINGS AND SIGNAGE SHALL CONFORM TO THE LATEST VERSION OF THE MANUAL ON UNIFORM TRAFFIC CONTROL DEVICES (MUTCD) AS PUBLISHED BY THE US DEPT. OF TRANSPORTATION, FEDERAL HIGHWAY ADMINISTRATION. ALL COSTS ASSOCIATED WITH CONSTRUCTION MARKINGS AND SIGNAGE SHALL BE THE CONTRACTOR'S RESPONSIBILITY.
- ALL ELEVATIONS SHOWN ARE NAVD 88.
- ALL AREAS DISTURBED DURING CONSTRUCTION THAT WILL NOT BE UNDER PROPOSED PAVEMENT SHALL BE RESTORED TO MATCH EXISTING CONDITIONS.
- ANY SIDEWALK, DRIVE APPROACH, CURB, OR STREET PAVEMENT REMOVED TO CONSTRUCT PROJECT MUST HAVE A PAVEMENT CUT PERMIT AND BE REPLACED BY CITY CONTRACTOR. PERMITS CAN BE OBTAINED BY CALLING 316-268-4501 OR 316-268-4480.
- ALL APPLICABLE FEES (TAP, EQUITY, IN LIEU OF & MAIN BENEFIT) MUST BE PAID BEFORE ANY CONNECTIONS CAN BE MADE ON THIS PROJECT. QUOTES CAN BE OBTAINED ON FEES BY CALLING 316-268-4555.
- CITY MAINTENANCE OF SANITARY SEWER MAINS ENDS AT THE LAST STRUCTURE WITHIN THE EASEMENT OR RIGHT-OF-WAY.
- FOLLOW THE LINK BELOW FOR CONSTRUCTION DETAILS ON SPECIFIC CITY OF WICHITA STANDARD DETAILS: <http://www.wichita.gov/standard-details>
- CONTRACTOR SHALL LIMIT THE EXTENT OF TRENCH OPEN OVERNIGHT AND WEEKENDS TO LESS THAN 50 FEET.
- EXISTING UTILITIES AND THEIR LOCATION, AS SHOWN ON THE PLANS REPRESENT THE BEST INFORMATION OBTAINABLE FOR DESIGN. LOCATION INFORMATION HAS BEEN OBTAINED FROM THE VARIOUS COMPANIES AND IS EITHER FROM COMPANY UTILITY DRAWINGS OR COMPANY PROVIDED FIELD LOCATIONS. THE PLAN LOCATIONS SHOWN ARE NOT GUARANTEED. ADDITIONAL EXISTING UTILITIES MAY ALSO BE ENCOUNTERED.
- A PORTION OF EXCESS EXCAVATED MATERIAL SHALL BE MOUNDING AROUND MANHOLES WHICH EXTEND MORE THAN ONE (1) FOOT ABOVE THE EXISTING GROUND. SUCH MOUND SHALL BE CONSTRUCTED WITH NEW DEVELOPMENT A SIX (6) FOOT DIAMETER FLAT TOP WITH 4 TO 1 SIDE SLOPES DOWN TO THE ORIGINAL GROUND. THE ELEVATION OF THE FLAT TOP OF THE MOUND SHALL BE 0.4 FOOT BELOW THE TOP OF THE MANHOLE.
- ALL STUBS AND PLUGGED PIPES SHALL BE LOCATED WITH GREEN PLASTIC TAPE IN THE SAME MANNER AS RISERS.
- CONNECTING TO EXISTING MANHOLES:
 PRIOR TO LAYING SEWER LINES USING EXISTING STUBS IN EXISTING MANHOLES, THE CONTRACTOR SHALL EXPOSE AND VERIFY THE ELEVATION, GRADE AND ALIGNMENT OF EXISTING STUBS AND NOTIFY THE ENGINEER OF ANY DEVIATION FROM THE PLANS. WHERE CONNECTION TO AN EXISTING MANHOLE THAT DOES NOT HAVE AN EXISTING STUB OR THE STUB IS UNUSABLE DUE TO ELEVATION GRADE OR ALIGNMENT, THE CONTRACTOR SHALL BORE CUT INTO EXISTING MANHOLE WALL TO MAKE CONNECTION USING APPROVED WATER STOP CASSETTE AND REPAIR THE EXISTING MANHOLE INVERT TO PROVIDE SMOOTH FLOW. THE COST TO CONNECTING TO EXISTING MANHOLES IS INCIDENTAL TO THE PROJECT.
- CONTRACTOR SHALL PROVIDE POSITIVE DRAINAGE AWAY FROM ALL MANHOLE COVERS.
- THE CONTRACTOR SHALL PREVENT ANY CONSTRUCTION DEBRIS FROM ENTERING THE EXISTING SANITARY SEWER DURING CONSTRUCTION.
- THE CONTRACTOR SHALL BE RESPONSIBLE FOR MAINTAINING CONTINUOUS FLOW OF SEWAGE THROUGH CONSTRUCTION. CONTRACTOR'S PROPOSED METHOD FOR MAINTAINING SEWAGE FLOW SHALL BE SUBMITTED AND APPROVED BY THE SEWER MAINTENANCE DIVISION (316-268-4073) PRIOR TO STARTING AND BY-PASSING OF SEWAGE FLOWS.
- ANY OVER EXCAVATION FROM MANHOLE AND PIPE REMOVAL SHALL BE BACKFILLED WITH AS-3 COMPACTED TO 90-95% ASTM D998.
- WORK DONE UNDER THIS PROJECT IS SUBJECT TO THE CITY OF WICHITA REQUIREMENTS FOR CONSTRUCTION OF INFRASTRUCTURE IMPROVEMENTS BY PRIVATE CONTRACT. THE CONTRACTOR SHALL BE FAMILIAR AND COMPLY WITH ALL OF THE REQUIREMENTS, INCLUDING BONDING, INSPECTION, TESTING, NOTIFICATION, PROVIDING AS-BUILT DRAWINGS, PAYING FOR ALL NECESSARY CONNECTIONS, AND/OR STREET REPAIR FEES AND PROVIDING PIPE MATERIAL AND OTHER CERTIFICATIONS.
- THE CONTRACTOR SHALL PROTECT FROM DAMAGE AND SUPPORT EXISTING UTILITIES THROUGH CONSTRUCTION AS APPROVED BY THE UTILITY OWNER AND THE ENGINEER AT THE CONTRACTOR'S EXPENSE.
- DEVELOPER FOR THIS PROJECT IS:
 WICHITA STATE UNIVERSITY
 1645 FAIRMOUNT ST.
 WICHITA, KS 67202
 EMILY PATTERSON
 316-976-3444

BENCHMARKS

DATUM:
 THE HORIZONTAL DATUM IS BASED ON THE KANSAS COORDINATE SYSTEM OF 1983, NAD83(2011), EPOCH 2010.000, SOUTH ZONE. COORDINATES SHOWN HAVE BEEN MODIFIED TO THE GROUND USING A COMBINED ADJUSTMENT FACTOR OF 1.0001200144. STATE PLANE COORDINATES CAN BE CALCULATED BY MULTIPLYING THE SHOWN VALUES BY 0.999856.

ALL ELEVATIONS SHOWN ARE BASED ON THE NAVD 88 VERTICAL DATUM, GEOID12B.

CONTROL POINTS:

CP1
 N: 1685258.587 E: 1649800.486 EL: 1296.69
 DESCRIPTION OF CONTROL POINT: PKNW

CP2
 N: 1685303.686 E: 1649519.024 EL: 1298.370
 DESCRIPTION OF CONTROL POINT: + CUT

CP3
 N: 1685381.874 E: 1649512.104 EL: 1297.740
 DESCRIPTION OF CONTROL POINT: + CUT

CP4
 N: 1685393.311 E: 1649889.120 EL: 1296.050
 DESCRIPTION OF CONTROL POINT: + CUT

CP5
 N: 1685430.759 E: 1650213.371 EL: 1297.300
 DESCRIPTION OF CONTROL POINT: + CUT

CP6
 N: 1685178.067 E: 1650219.662 EL: 1295.810
 DESCRIPTION OF CONTROL POINT: + CUT

CP7
 N: 1685218.977 E: 1649891.744 EL: 1295.910
 DESCRIPTION OF CONTROL POINT: + CUT

CP102
 N: 1685400.353 E: 1649526.834 EL: 1297.665
 DESCRIPTION OF CONTROL POINT: + CUT

NOTE:
 ALL CONTROL POINTS SHOWN HAVE ELEVATIONS ESTABLISHED USING STANDARD SURVEYING PROCEDURES AND CAN BE USED AS TEMPORARY BENCHMARKS. WHEN USING A CONTROL POINT AS A TEMPORARY BENCHMARK, IT IS RECOMMENDED THAT CROSS-CHECKS BE MADE TO OTHER CONTROL POINTS OR BENCHMARKS TO CONFIRM ELEVATIONS PRIOR TO USE.

VICINITY MAP
 No Scale

INDEX TO DRAWINGS

SHEET NO.	DESCRIPTION
1	TITLE SHEET C201
2-3	DETAILS C202-C03
4	LINE 1 C204
SEE GENERAL NOTE #16 FOR CITY OF WICHITA STANDARD BMP LINK	
5-9	BMP DETAILS C210-C214
10	EROSION CONTROL PLAN C300

LEGEND

--- EXISTING SEWER
 --- PROPOSED SEWER



Scott Preston Evans
 Civil Engineer
 KS24423

Design Architect
 CO Architects
 5750 Wilshire Boulevard, Suite 550
 Los Angeles, CA 90036
 Wichita, KS 67206
 P: 316.684.9600

Civil Engineer / Landscape Architect
 MKEC Engineering
 411 North Webb Road
 Wichita, KS 67206
 P: 316.684.9600

Structural Engineer
 KPFF Consulting Engineers
 1630 Des Peres Road, Suite 100
 St. Louis, MO 63131
 P: 314.835.0524

MEP Engineer
 Henderson Engineers
 8345 Lenexa Drive
 Lenexa, KS 66214
 P: 913.742.5000

Fire Sprinkler Design
 FSC
 8675 West 96th Street
 Overland Park, KS 66212
 P: 913.722.3473

Acoustic / IT / AV
 NVS Engineering & Technology
 1501 Roadside Street, Suite 300
 Pittsburgh, PA 15233
 P: 402.408.4104

Branding / Signage / Wayfinding
 Dimensional Innovations
 3421 Merriam Drive
 Overland Park, KS 66203
 P: 913.384.3488

Building Envelope Consultant
 WSP
 30 N La Salle Street, Suite 4200
 Chicago, IL 60602
 P: 312.782.8150

Revisions:	
▲	07.08.2024 ASI 001
▲	08.14.2024 PR 001

Department of Administration
 Office of Facilities & Procurement
 Design, Construction &
 Management
 700 SW H. COMPTON BLVD, SUITE 1200
 TOPEKA, KANSAS 66603
 Phone 765-296-8899

WICHITA STATE UNIVERSITY AND
 THE UNIVERSITY OF KANSAS MEDICAL CENTER
WICHITA BIOMEDICAL CAMPUS - PHASE 1
 201 S. TOPEKA AVENUE
 WICHITA, KANSAS 67202
 DATE: 06/02/2024 DRAWN BY: BKS

SANITARY SEWER
 LINE 1
 A-014707
 C204
 BID PACKAGE #1



Wichita, KS • 316.684.9600

PRIVATE SANITARY SEWER PLANS FOR
WICHITA BIOMEDICAL CAMPUS
 WICHITA, KS

SANITARY SEWER LINE 1	
PROJECT NO.	2024-00631PPS
SCALE	1"=40'
DRAWN	BKS
DESIGNED	SPE
CHECKED	SPE
NO.	REVISION
SHEET NO. 4 OF 4	



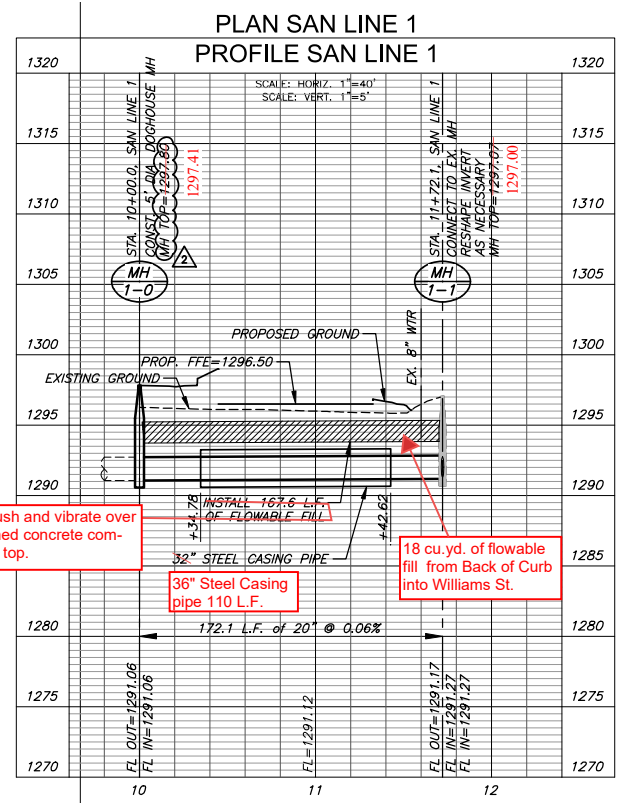
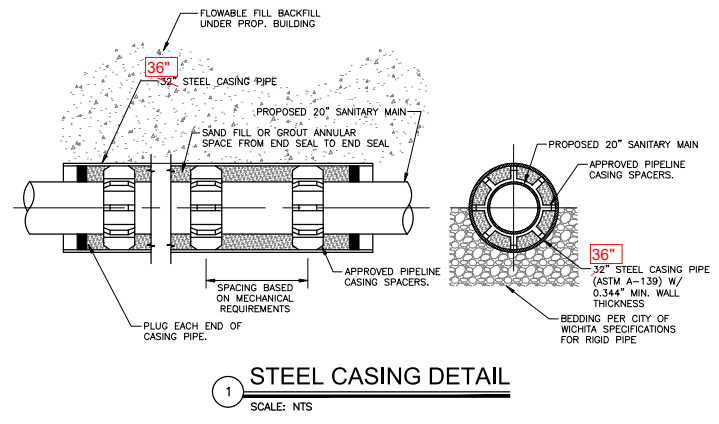
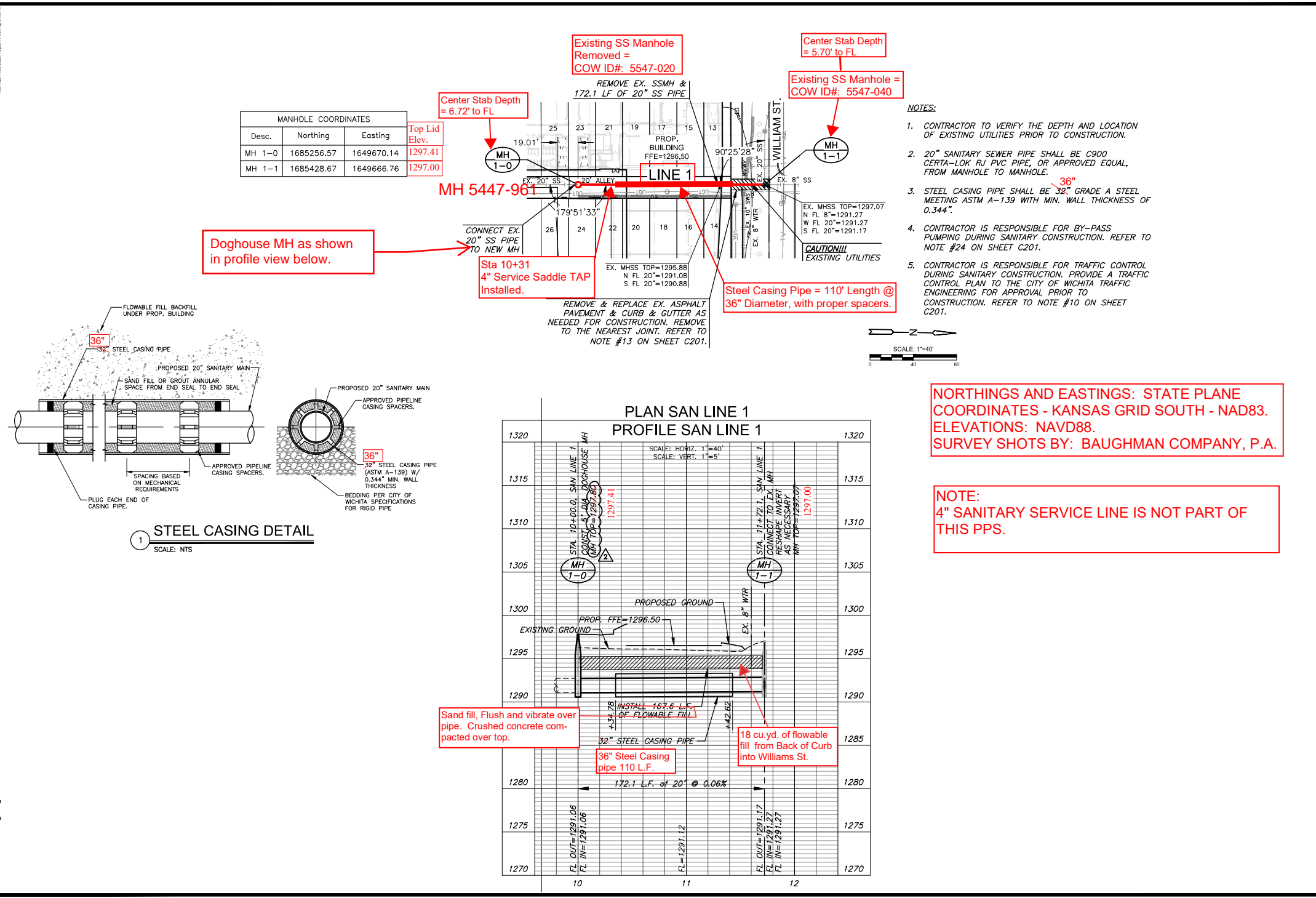
Wichita, KS • 316.684.9600

- NOTES:**
- CONTRACTOR TO VERIFY THE DEPTH AND LOCATION OF EXISTING UTILITIES PRIOR TO CONSTRUCTION.
 - 20" SANITARY SEWER PIPE SHALL BE C900 CERTA-LOK RJ PVC PIPE, OR APPROVED EQUAL, FROM MANHOLE TO MANHOLE.
 - STEEL CASING PIPE SHALL BE 32" GRADE A STEEL MEETING ASTM A-139 WITH MIN. WALL THICKNESS OF 0.344".
 - CONTRACTOR IS RESPONSIBLE FOR BY-PASS PUMPING DURING SANITARY CONSTRUCTION. REFER TO NOTE #24 ON SHEET C201.
 - CONTRACTOR IS RESPONSIBLE FOR TRAFFIC CONTROL DURING SANITARY CONSTRUCTION. PROVIDE A TRAFFIC CONTROL PLAN TO THE CITY OF WICHITA TRAFFIC ENGINEERING FOR APPROVAL PRIOR TO CONSTRUCTION. REFER TO NOTE #10 ON SHEET C201.

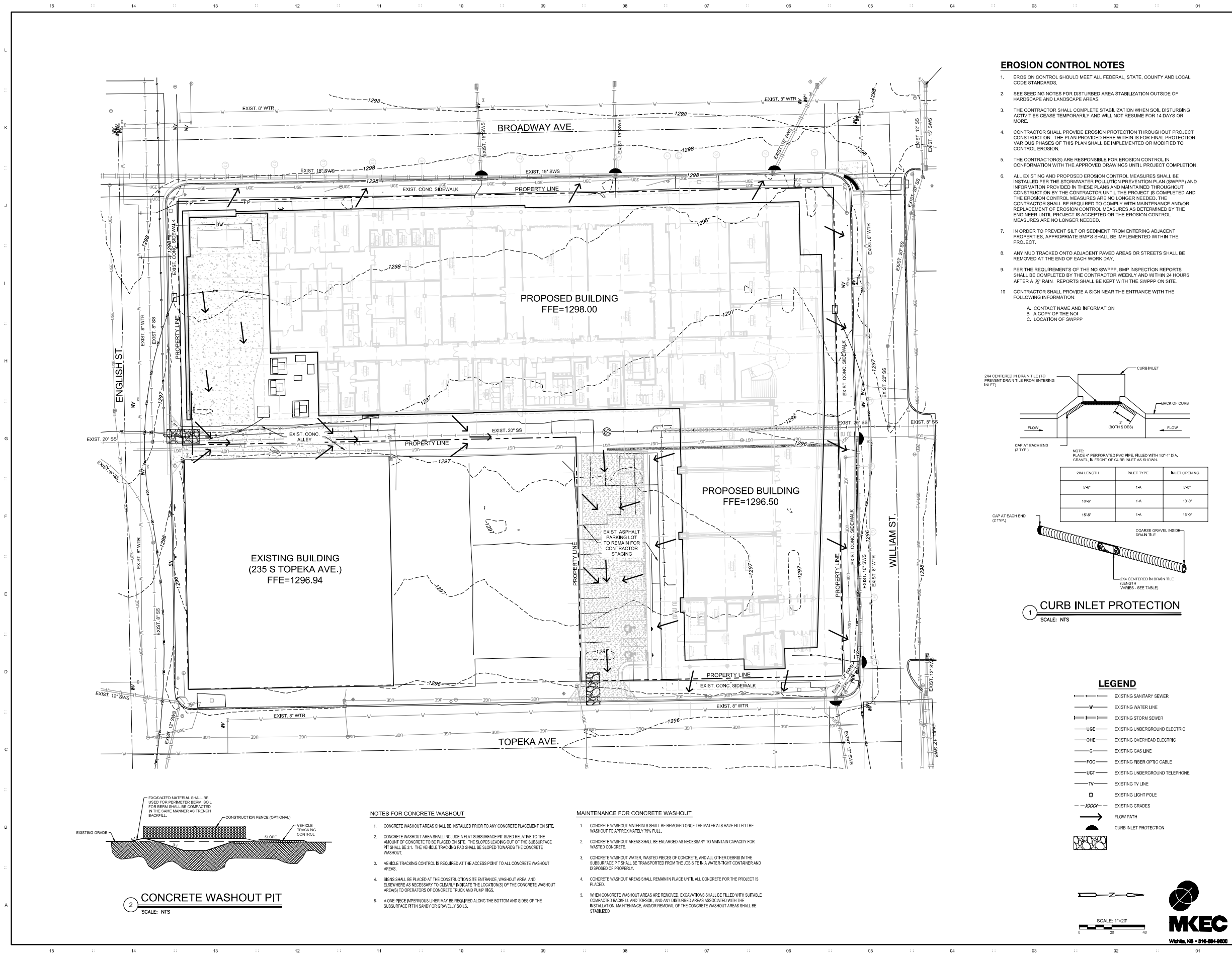
NORTHINGS AND EASTINGS: STATE PLANE COORDINATES - KANSAS GRID SOUTH - NAD83. ELEVATIONS: NAVD88. SURVEY SHOTS BY: BAUGHMAN COMPANY, P.A.

**NOTE:
4" SANITARY SERVICE LINE IS NOT PART OF THIS PPS.**

MANHOLE COORDINATES			
Desc.	Northing	Eastng	Top Lid Elev.
MH 1-0	1685256.57	1649670.14	1297.41
MH 1-1	1685428.67	1649666.76	1297.00

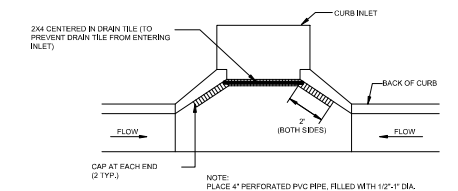


P:\PROJECTS\2024\06\02\WICHITA BIOMEDICAL CAMPUS PHASE 1\PPS\DWG\WICHITA BIOMEDICAL CAMPUS PHASE 1 SANITARY SEWER LINE 1.DWG
 P:\PROJECTS\2024\06\02\WICHITA BIOMEDICAL CAMPUS PHASE 1\PPS\DWG\WICHITA BIOMEDICAL CAMPUS PHASE 1 SANITARY SEWER LINE 1.DWG



EROSION CONTROL NOTES

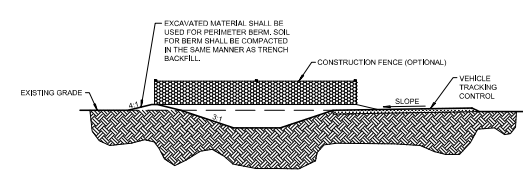
1. EROSION CONTROL SHOULD MEET ALL FEDERAL, STATE, COUNTY AND LOCAL CODE STANDARDS.
2. SEE SEEDING NOTES FOR DISTURBED AREA STABILIZATION OUTSIDE OF HARDSCAPE AND LANDSCAPE AREAS.
3. THE CONTRACTOR SHALL COMPLETE STABILIZATION WHEN SOIL DISTURBING ACTIVITIES CEASE TEMPORARILY AND WILL NOT RESUME FOR 14 DAYS OR MORE.
4. CONTRACTOR SHALL PROVIDE EROSION PROTECTION THROUGHOUT PROJECT CONSTRUCTION. THE PLAN PROVIDED HERE WITH IS FOR FINAL PROTECTION, VARIOUS PHASES OF THIS PLAN SHALL BE IMPLEMENTED OR MODIFIED TO CONTROL EROSION.
5. THE CONTRACTOR(S) ARE RESPONSIBLE FOR EROSION CONTROL IN CONFORMANCE WITH THE APPROVED DRAWINGS UNTIL PROJECT COMPLETION.
6. ALL EXISTING AND PROPOSED EROSION CONTROL MEASURES SHALL BE INSTALLED PER THE STORMWATER POLLUTION PREVENTION PLAN (SWPPP) AND INFORMATION PROVIDED IN THESE PLANS AND MAINTAINED THROUGHOUT CONSTRUCTION BY THE CONTRACTOR UNTIL THE PROJECT IS COMPLETED AND THE EROSION CONTROL MEASURES ARE NO LONGER NEEDED. THE CONTRACTOR SHALL BE REQUIRED TO COMPLY WITH MAINTENANCE AND/OR REPLACEMENT OF EROSION CONTROL MEASURES AS DETERMINED BY THE ENGINEER UNTIL PROJECT IS ACCEPTED OR THE EROSION CONTROL MEASURES ARE NO LONGER NEEDED.
7. IN ORDER TO PREVENT SILT OR SEDIMENT FROM ENTERING ADJACENT PROPERTIES, APPROPRIATE BMP'S SHALL BE IMPLEMENTED WITHIN THE PROJECT.
8. ANY MUD TRACKED ONTO ADJACENT PAVED AREAS OR STREETS SHALL BE REMOVED AT THE END OF EACH WORK DAY.
9. PER THE REQUIREMENTS OF THE NCSWPPP, BMP INSPECTION REPORTS SHALL BE COMPLETED BY THE CONTRACTOR WEEKLY AND WITHIN 24 HOURS AFTER A 1/2" RAIN. REPORTS SHALL BE KEPT WITH THE SWPPP ON SITE.
10. CONTRACTOR SHALL PROVIDE A SIGN NEAR THE ENTRANCE WITH THE FOLLOWING INFORMATION:
 - A. CONTACT NAME AND INFORMATION
 - B. A COPY OF THE NOI
 - C. LOCATION OF SWPPP



1 CURB INLET PROTECTION
SCALE: NTS

LEGEND

- S — EXISTING SANITARY SEWER
- W — EXISTING WATERLINE
- SS — EXISTING STORM SEWER
- UGE — EXISTING UNDERGROUND ELECTRIC
- OHE — EXISTING OVERHEAD ELECTRIC
- G — EXISTING GAS LINE
- FOC — EXISTING FIBER OPTIC CABLE
- UGT — EXISTING UNDERGROUND TELEPHONE
- TV — EXISTING TV LINE
- L — EXISTING LIGHT POLE
- XXXX — EXISTING GRADES
- FLOW PATH
- CURB INLET PROTECTION



2 CONCRETE WASHOUT PIT
SCALE: NTS

NOTES FOR CONCRETE WASHOUT

1. CONCRETE WASHOUT AREAS SHALL BE INSTALLED PRIOR TO ANY CONCRETE PLACEMENT ON SITE.
2. CONCRETE WASHOUT AREA SHALL INCLUDE A FLAT SUBSURFACE PIT SIZED RELATIVE TO THE AMOUNT OF CONCRETE TO BE PLACED ON SITE. THE SLOPES LEADING OUT OF THE SUBSURFACE PIT SHALL BE 1:1. THE VEHICLE TRACKING PAD SHALL BE SLOPED TOWARDS THE CONCRETE WASHOUT.
3. VEHICLE TRACKING CONTROL IS REQUIRED AT THE ACCESS POINT TO ALL CONCRETE WASHOUT AREAS.
4. SIGNS SHALL BE PLACED AT THE CONSTRUCTION SITE ENTRANCE, WASHOUT AREA, AND ELSEWHERE AS NECESSARY TO CLEARLY INDICATE THE LOCATION(S) OF THE CONCRETE WASHOUT AREAS TO OPERATORS OF CONCRETE TRUCKS AND PUMPS.
5. A ONE-PIECE IMPERVIOUS LINER MAY BE REQUIRED ALONG THE BOTTOM AND SIDES OF THE SUBSURFACE PIT IN SANDY OR GRAVELLY SOILS.

MAINTENANCE FOR CONCRETE WASHOUT

1. CONCRETE WASHOUT MATERIALS SHALL BE REMOVED ONCE THE MATERIALS HAVE FILLED THE WASHOUT TO APPROXIMATELY 75% FULL.
2. CONCRETE WASHOUT AREAS SHALL BE ENLARGED AS NECESSARY TO MAINTAIN CAPACITY FOR WASHED CONCRETE.
3. CONCRETE WASHOUT WATER, WASTED PIECES OF CONCRETE, AND ALL OTHER DEBRIS IN THE SUBSURFACE PIT SHALL BE TRANSPORTED FROM THE JOB SITE IN A WATER-TIGHT CONTAINER AND DISPOSED OF PROPERLY.
4. CONCRETE WASHOUT AREAS SHALL REMAIN IN PLACE UNTIL ALL CONCRETE FOR THE PROJECT IS PLACED.
5. WHEN CONCRETE WASHOUT AREAS ARE REMOVED, EXCAVATIONS SHALL BE FILLED WITH SUITABLE COMPACTED BACKFILL AND TOPSOIL, AND ANY DISTURBED AREAS ASSOCIATED WITH THE INSTALLATION, MAINTENANCE, AND/OR REMOVAL OF THE CONCRETE WASHOUT AREAS SHALL BE STABILIZED.



Scott Preston Evans
Civil Engineer
KS24423

Design Architect
CO Architects
3750 Wilshire Boulevard, Suite 550
Los Angeles, CA 90036
P: 323.525.0500

Civil Engineer / Landscape Architect
MKEC Engineering
411 North Webb Road
Wichita, KS 67206
P: 316.684.9600

Structural Engineer
KPT Consulting Engineers
1630 Des Peres Road, Suite 100
St. Louis, MO 63131
P: 314.835.0524

MEP Engineer
Henderson Engineers
8345 Lenexa Drive
Lenexa, KS 66214
P: 913.742.5000

Fire Sprinkler Design
FSC
8675 West 96th Street
Overland Park, KS 66212
P: 913.722.3473

Acoustic / IT / AV
NVS Engineering & Technology
1521 Riverside Street, Suite 300
Pittsburgh, PA 15233
P: 402.408.4104

Branding / Signage / Wayfinding
Dimensional Innovations
3421 Meridian Drive
Overland Park, KS 66203
P: 913.384.3488

Building Envelope Consultant
WESP
30 N La Salle Street, Suite 4200
Chicago, IL 60602
P: 312.752.8150

Revisions:
07.08.2024 ASI 001

Department of Administration
Office of Facilities & Procurement
Management
Design, Construction &
700 SW Harrison, Suite 1200
Topeka, Kansas 66603
Phone 785-296-8859

WICHITA STATE UNIVERSITY AND
THE UNIVERSITY OF KANSAS MEDICAL CENTER
WICHITA BIOMEDICAL CAMPUS - PHASE 1
201 S. TOPEKA AVENUE
WICHITA, KANSAS 67202
DATE: 05.02.2024
DRAWN BY: SFE

EROSION CONTROL PLAN
A-014707
C300
BID PACKAGE #1



Wichita, KS • 316.684.0820