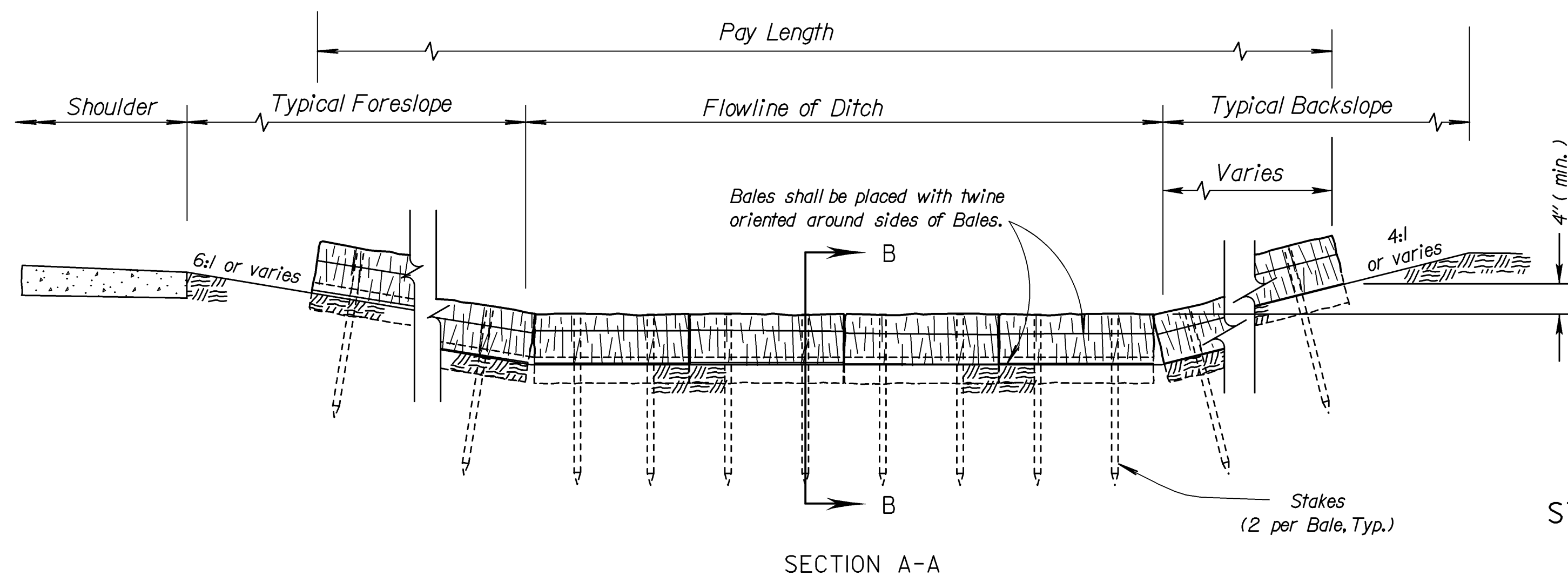
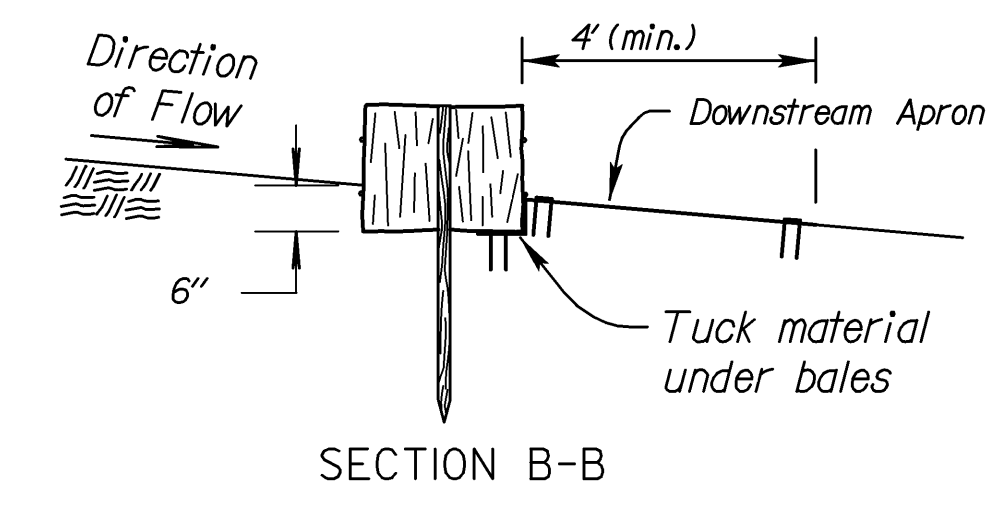
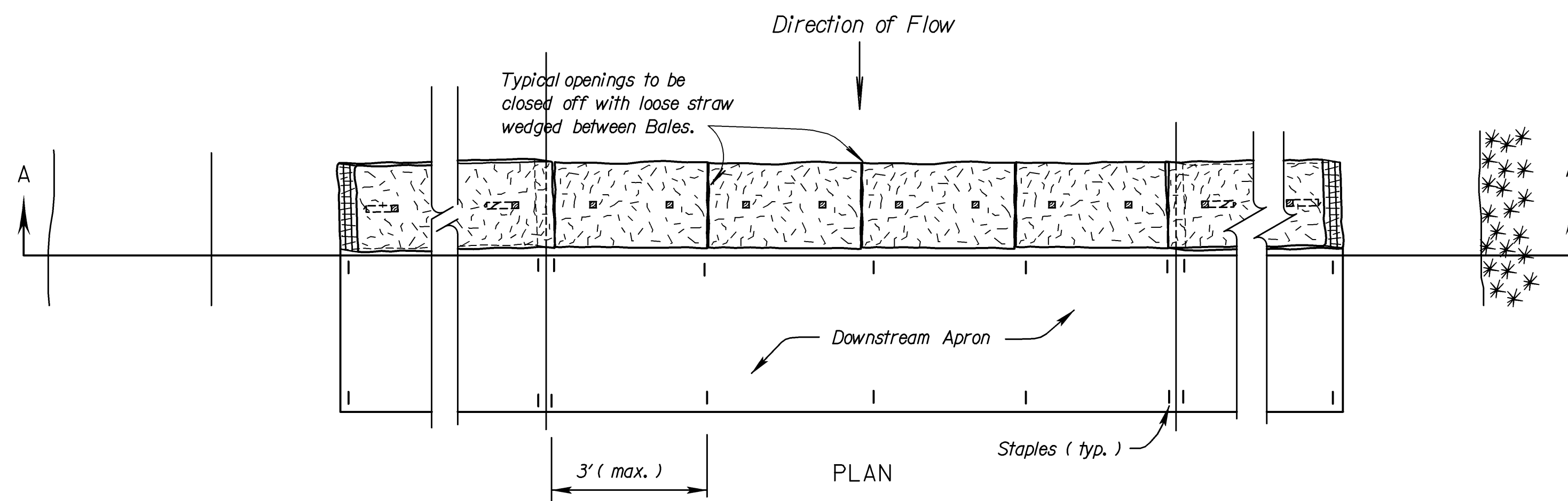


STATE	PROJECT NO.	YEAR	SHEET NO.	TOTAL SHEETS
KANSAS	87 N-0359-01	2006	39	61

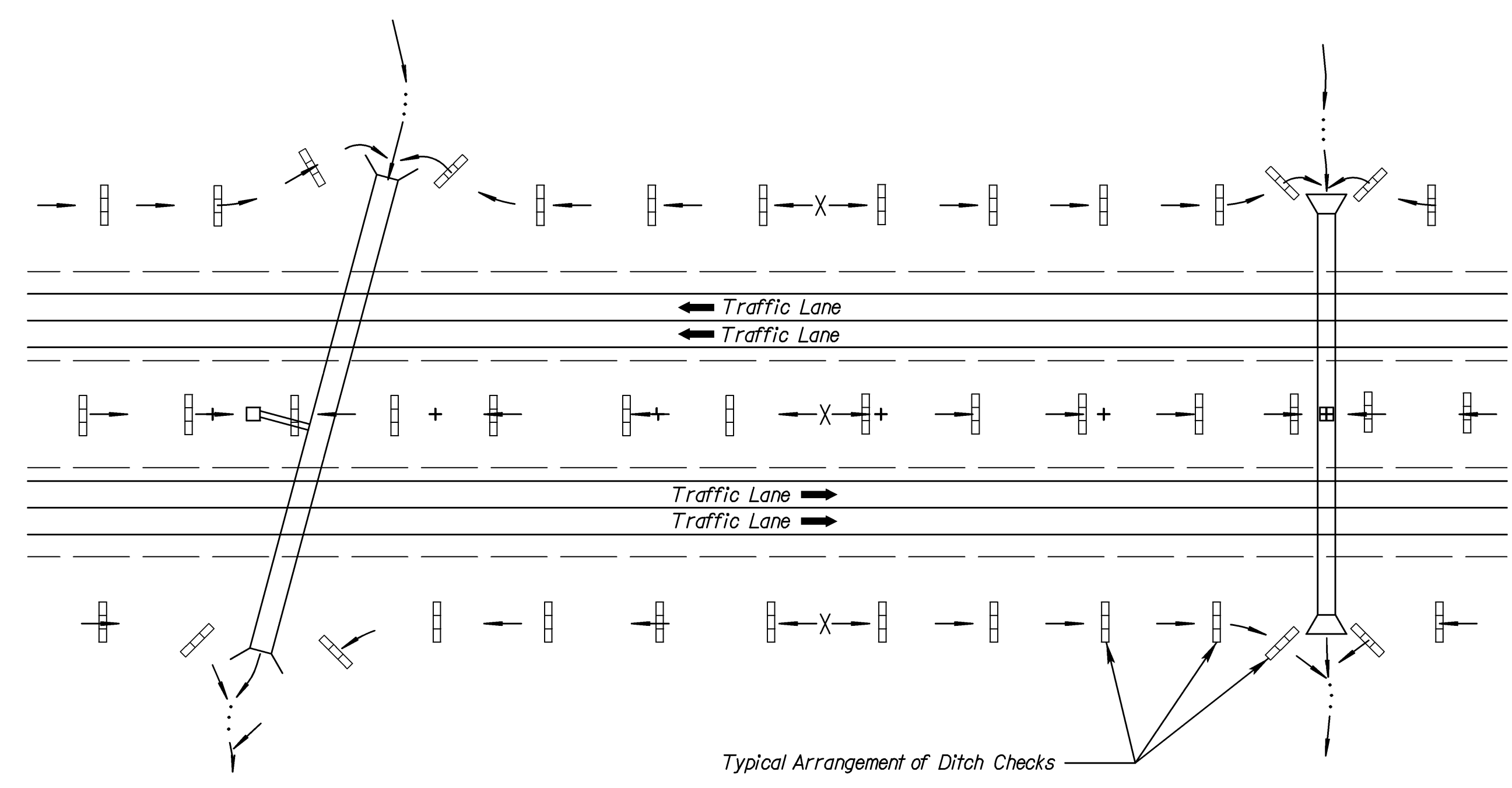


STRAW OR HAY BALE DITCH CHECK  
NO SCALE

- STRAW OR HAY BALE NOTES:**
1. Place bales tightly together, with loose straw or hay wedged between bales to close off openings.
  2. Wood stakes shall be 2" x 2" (nom.) x 4' (min.) long.
  3. Use as many bales as necessary to completely block the ditch and to prevent water from flowing around the ends of the ditch check.
  4. Use only twine to bind bales. The use of wire binding is prohibited because it does not readily biodegrade.
  5. Use silt fence material as the downstream apron to prevent scour below the ditch check.
  6. Wire staples shall be 6" long by 1" wide, minimum.

DITCH SLOPE (%)	SPACING INTERVAL (FEET)
1.0	200
2.0	100
3.0	65
4.0	50
5.0	40
6.0	33

NOTE: Use this spacing for all except Rock Ditch Checks.



TYPICAL DITCH CHECK LAYOUT PLAN  
NO SCALE

- GENERAL NOTES:**
- 1) The choice of ditch check methods is at the option of the Contractor.
  - 2) Use only rock checks in situations where the ditch slope exceeds 6 percent.
  - 3) Ditch checks damaged by Contractor's negligence, including improper maintenance or lack of maintenance, shall be repaired by Contractor at no extra cost to KDOT.
  - 4) Agricultural products, such as native prairie hay, used for mulching and erosion control practices, excluding wood based mulch, shall meet the North American Weed Free Forage Standards. Refer to Special Provision Subsection 2108.04 "Mulching".

5					
4					
3					
2	6/16/05	Revised Standard		SHS	SHS
1	5/10/99	Revised Standard		WCL	RDR
NO.	DATE	REVISIONS	BY	APP'D	

**KANSAS DEPARTMENT OF TRANSPORTATION**  
**TEMPORARY EROSION AND POLLUTION CONTROL**  
**STRAW OR HAY BALE DITCH CHECKS**

LA852E  
 F.H.W.A. APPROVAL 6/22/2005 APP'D Scott H. Shields  
 DESIGNED MRM DETAILED MRM QUANTITIES TRACED MRM  
 DESIGN CK. SHS DETAIL CK. SHS QUAN. CK. TRACED CK. SHS