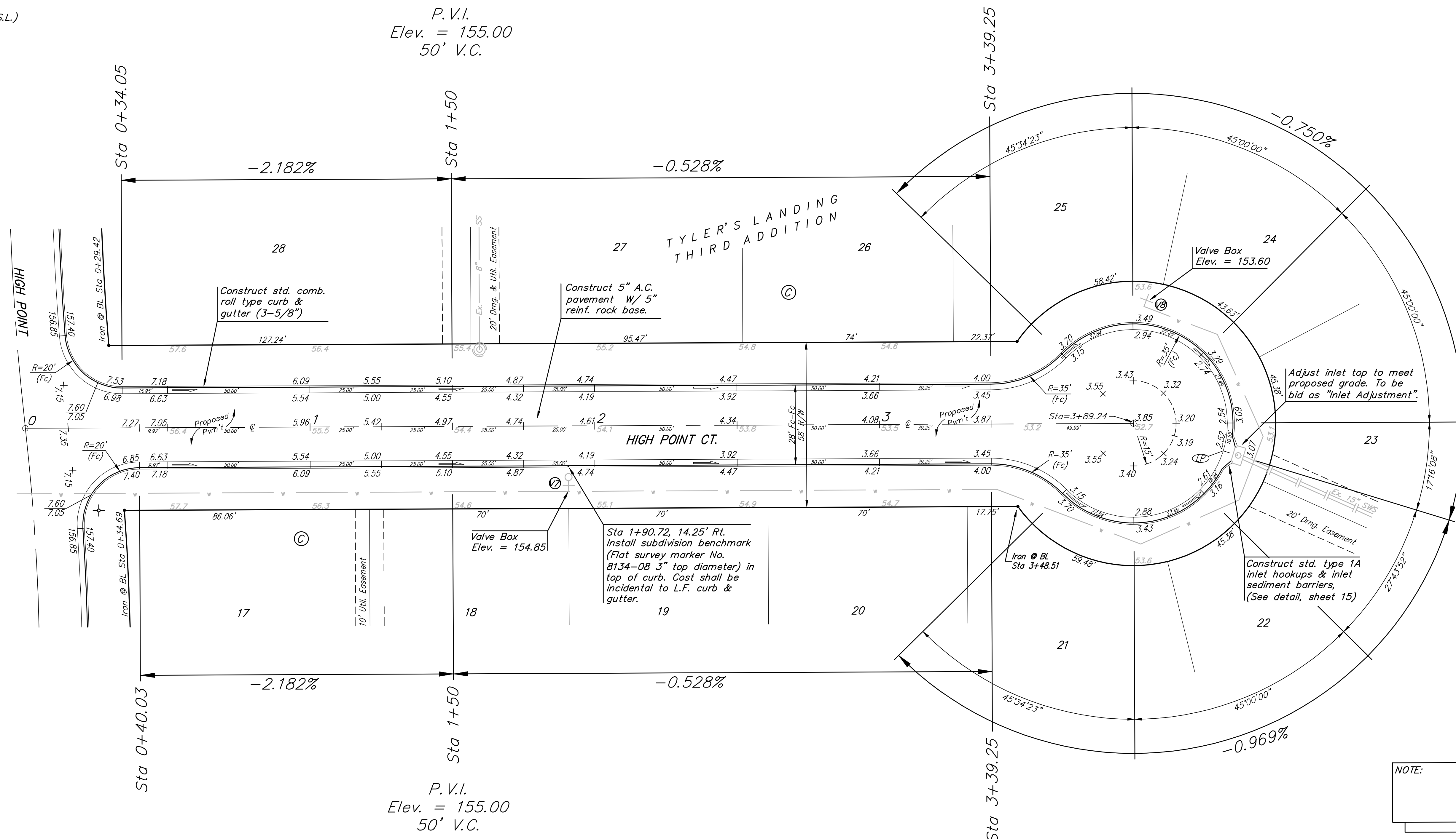
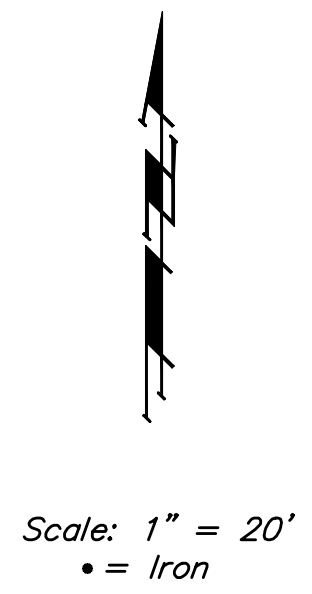


**Benchmarks:**  
 BM #1: "□" Cut in Middle of Curb  
 Inlet Top, North Curb of Conrey,  
 Adjacent to SW Corner of Lot 14,  
 Block A, Tyler's Landing 3rd Addition.  
 Elev. = 150.29 (1337.69 M.S.L.)

BM #2: "□" Cut in Top of East Curb  
 of High Point, 10' South of End of  
 Return. Adjacent to Lot 1, Block D,  
 Tyler's Landing Addition.  
 Elev. = 155.28 (1342.68 M.S.L.)



P.V.I.  
 Elev. = 153.00  
 33.88' V.C.

P.V.I.  
 Elev. = 155.00  
 50' V.C.

NOTE: ROLL TYPE CURB & GUTTER TO BE CONSTRUCTED ON THE PAVEMENT SHOWN ON THIS SHEET. TOP OF CURB ELEVATIONS ARE GIVEN FOR FULL HEIGHT CURB.

**VALVE LOCATION TABLE**

VALVE NUMBER	BASELINE STATION	OFFSET DISTANCE	OFFSET DIRECTION
7	1+90.75	23.00'	Rt.
8	3+93.14	41.06'	Lt.

Paving contractor will be responsible to operate all water valves on the project, in the presence of the inspector, to ensure accessibility to the valves, and that all valves are left in the "ON" position when the project is completed.

**Baughman**

Baughman Company, P.A. 315 Ellis St. Wichita, KS 67211 P 316-262-7271 F 316-262-0149  
 ENGINEERING | SURVEYING | PLANNING | LANDSCAPE ARCHITECTURE

Tyler's Landing 3rd Addition - Phase 3

**High Point Ct.**

Street Paving Improvements

PROJECT NUMBER  
47284496

DESIGN  
RDM/AEG

APPROVED  
AEG

SCALE  
Noted

SHEET

DRAWN  
RDM

DATE  
OCT 2007

**10 OF 23**

Tyler's Landing 3rd Phase 3\STR\0610\_STR\_1.dwg 07-09-E925