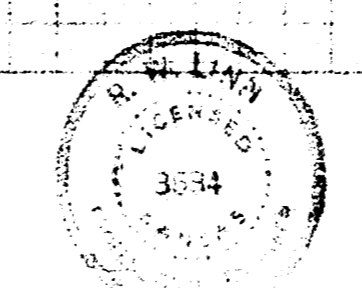
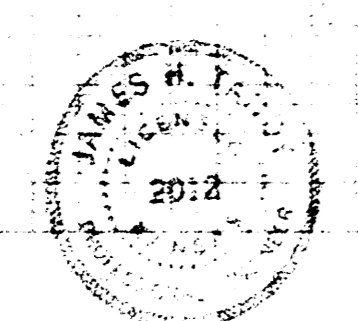
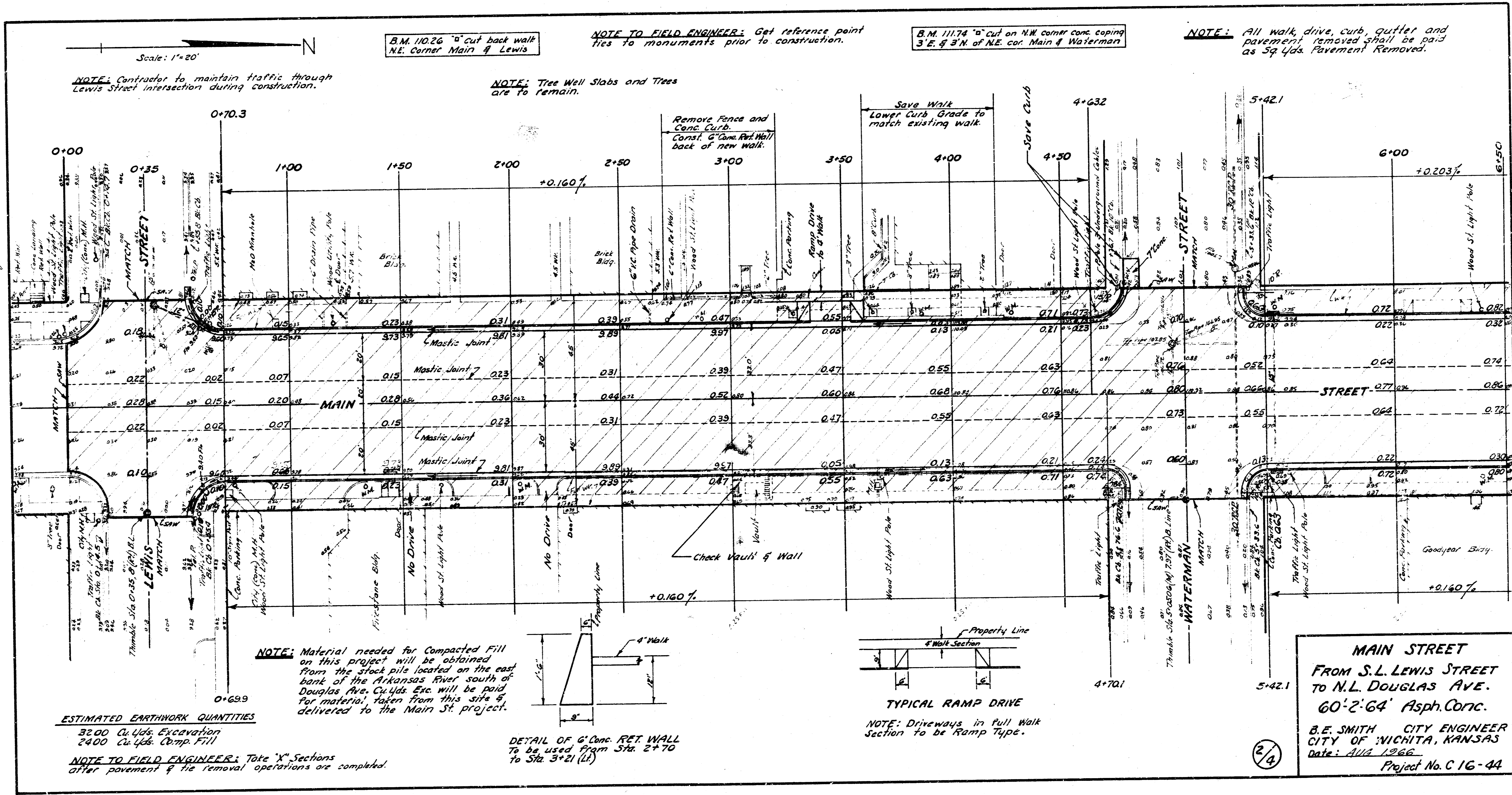


Checked by J. L. ...  
 Plan by J. L. ...  
 Station 11.15



**INCIDENTAL DRAINAGE**  
**MAIN STREET**  
 SL LEWIS ST. TO NL DOUGLAS AVE.  
 CITY OF WICHITA, KANSAS  
 B. E. SMITH CITY ENGINEER  
 AUG. 1966 PROJECT NO. C16-44





Scale: 1"=20'

NOTE: Contractor to maintain traffic through Lewis Street intersection during construction.

B.M. 11026 5" cut back walk N.E. Corner Main & Lewis

NOTE TO FIELD ENGINEER: Get reference point ties to monuments prior to construction.

B.M. 11174 5" cut on N.W. corner conc coping 3' E. & 3' N. of N.E. cor. Main & Waterman

NOTE: All walk, drive, curb, gutter and pavement removed shall be paid as 5q yds. Pavement Removed.

NOTE: Tree Well Slabs and Trees are to remain.

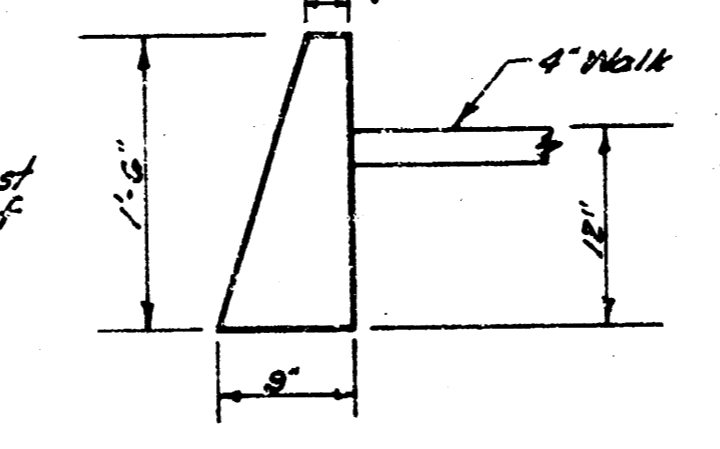
Survey  
M.F.G.  
Plan  
L.C.R.  
Checked  
S.E.

**ESTIMATED EARTHWORK QUANTITIES**

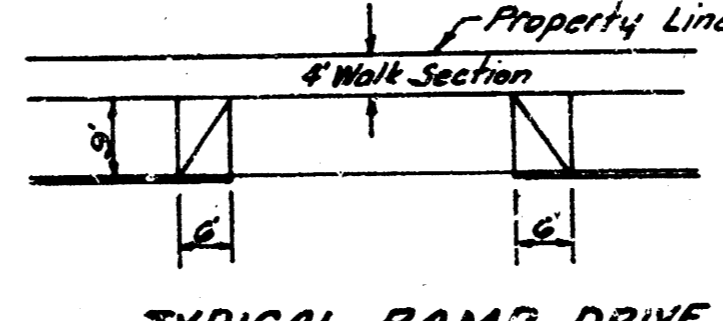
3200 Cu. Yds. Excavation  
2400 Cu. Yds. Comp. Fill

NOTE TO FIELD ENGINEER: Take "X" Sections after pavement & the removal operations are completed.

NOTE: Material needed for Compacted Fill on this project will be obtained from the stock pile located on the east bank of the Arkansas River south of Douglas Ave. Cu. Yds. Etc. will be paid for material taken from this site & delivered to the Main St. project.



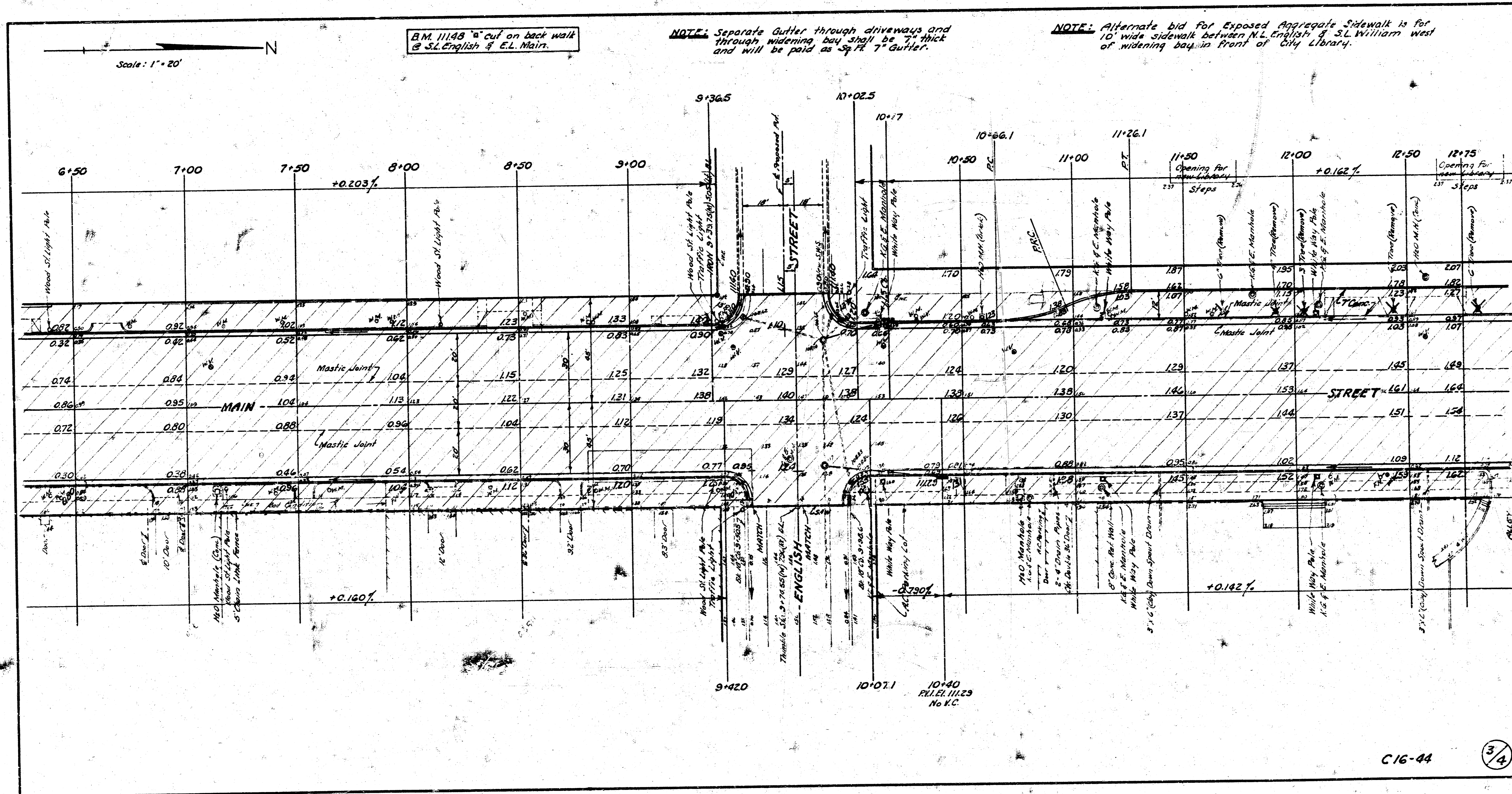
DETAIL OF 6" CONC. RET. WALL To be used from Sta. 2+70 to Sta. 3+21 (U)



TYPICAL RAMP DRIVE NOTE: Driveways in Full Walk Section to be Ramp Type.

**MAIN STREET**  
FROM S.L. LEWIS STREET  
TO N.L. DOUGLAS AVE.  
60'-2'-64" Asph. Conc.  
B.E. SMITH CITY ENGINEER  
CITY OF WICHITA, KANSAS  
Date: 11/15/66  
Project No. C 16-44

2/4



Scale: 1" = 20'

B.M. 11148 "a" cut on back walk @ S.E. English & E.L. Main.

NOTE: Separate Gutter through driveways and through widening bay shall be 7" thick and will be paid as Sp. 7" Gutter.

NOTE: Alternate bid for Exposed Aggregate Sidewalk is for 10' wide sidewalk between N.L. English & S.L. William west of widening bay in front of City Library.

C16-44

3/4

