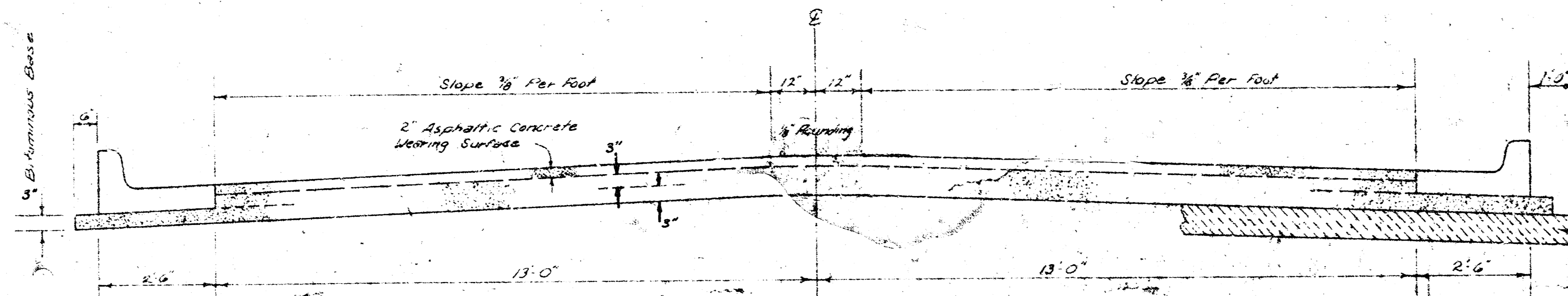


# MAPLE LANE

SL. MAPLE STREET TO AND INCLUDING CUL-DE-SAC

472-76-245-80582-000-000-C01



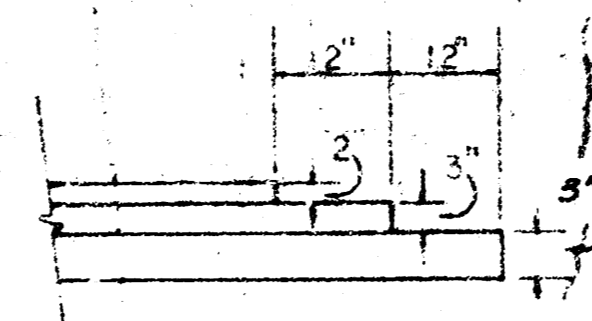
## TYPICAL SECTION

31' ASPHALTIC CONCRETE PAVEMENT WITH BITUMINOUS BASE

A TACK COAT OF EMULSIFIED ASPHALT (SS-1H) SHALL BE APPLIED AT AN APPROXIMATE RATE OF 0.05 GALLONS PER SQ. YD. BETWEEN LIFTS OF ASPHALTIC MATERIALS WHEN ORDERED BY THE ENGINEER. TACK COAT WILL NOT BE PAID FOR DIRECTLY AND SHALL BE CONSIDERED AS SUBSIDIARY TO PRICE BID FOR ASPHALTIC PAVEMENT.

BITUMINOUS BASE AND ASPHALTIC CONCRETE WEARING SURFACE SHALL BE PLACED WITH A LAYDOWN MACHINE HAVING AUTOMATIC CONTROLS FOR CROWN AND GRADE. CONSTRUCTION JOINTS IN EACH LIFT SHALL BE STAGGERED A MINIMUM DISTANCE OF 1' WITH JOINTS IN PRECEDING LIFTS AND SUCH THAT A JOINT WILL BE CONSTRUCTED ON THE PAVEMENT CENTERLINE IN THE TOP LIFT.

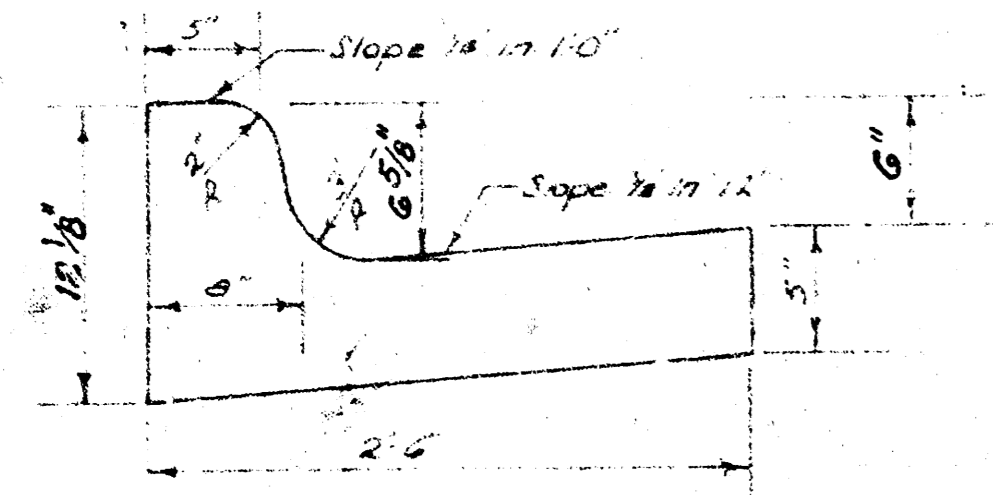
### DETAIL OF TRANSVERSE CONSTRUCTION JOINTS



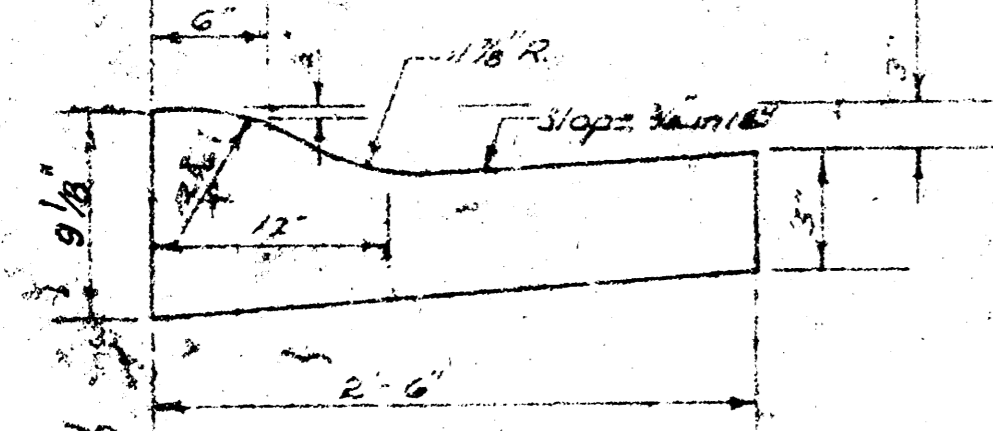
TRANSVERSE CONSTRUCTION JOINTS SHALL BE CONSTRUCTED IN FLEXIBLE BASE PAVEMENTS AT LOCATIONS WHERE PAVEMENT TEMPORARILY ENDS TO FACILITATE FUTURE PAVEMENT CONSTRUCTION AS SHOWN BY DETAIL. THE COST OF CONSTRUCTING THE TRANSVERSE CONSTRUCTION JOINTS SHALL NOT BE MEASURED OR PAID FOR DIRECTLY BUT SHALL BE INCLUDED IN THE BID PRICE FOR SQUARE YARDS OF ASPHALTIC CONCRETE PAVEMENT.

*The A.C. pavement between the Comb. Curb & gutter shall be paid as 5 1/2" A.C. Pavement (6" Bituminous Base). The Bituminous Base under the Comb. Curb & gutter shall be paid as 5 1/2" Bituminous Base.*

COMBINED CURB & GUTTER



ROLL TYPE CURB & GUTTER



CITY OF WICHITA, KANSAS

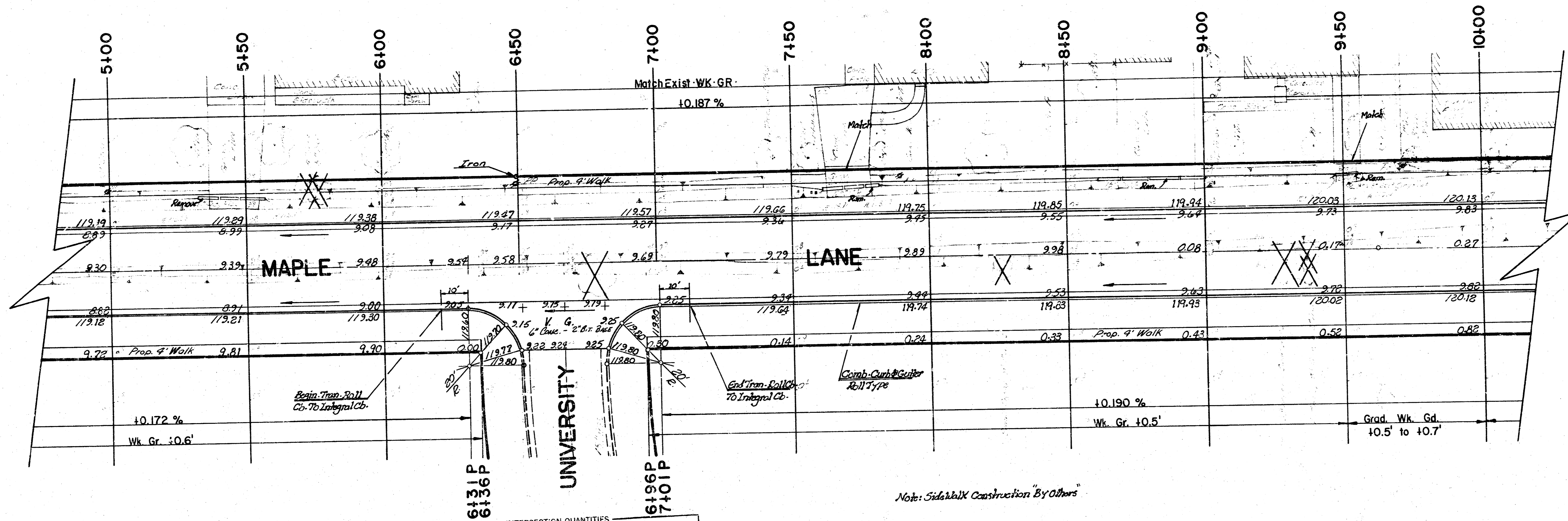
DEPARTMENT OF PUBLIC WORKS — ENGINEERING

FILMED FROM THE BEST AVAILABLE COPY .....



B.M. 120.19 R.R. Spike in South face of power pole at center of Dugan on North side of 7617.  
 B.M. 119.59 R.R. Spike in East face of power pole 450.0 ft. North of the North Line of 7617 on the West side of Maple Lane.  
 B.M. 121.85 City Std. Disc 33.7 ft. West and 36.3 ft. South of Quarter Section Corner of Dugan Road and Maple Street.

Scale: 1" = 20'



INTERSECTION QUANTITIES

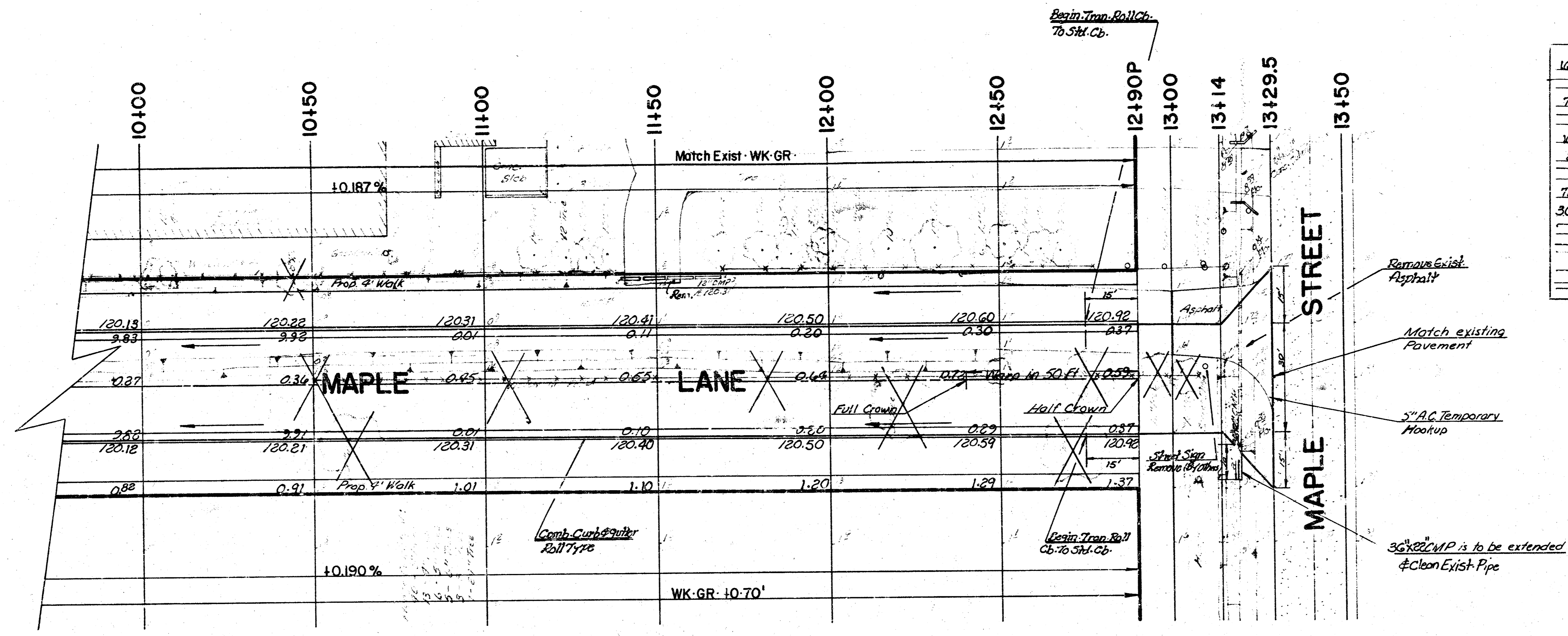
—	S.Y.	Concrete Pavement
86.7	S.Y.	8" Asphaltic Conc. Pavement (6" Bituminous Base)
—	S.Y.	Bituminous Base
—	L.F.	Combined Curb & Gutter
42.6	L.F.	Integral Curb
—	S.F.	4" Wheelchair Ramp
—	S.F.	4" Walk
68.6	C.Y.	Excavation
27.9	C.Y.	Compacted Fill
—	Lbs.	Reinforcing Steel
—	S.Y.	Manipulation
—	Tons	Lime or Cement
84.3	S.Y.	V.G. 6" Concrete & 8" Asphaltic Concrete Base

Maple Lane  
 S.L. Maple to and including C. & S. Soc.  
 472-76-295-80582-000-000-001

FILMED FROM THE BEST AVAILABLE COPY .....

B.M. 120.19 R.R. Spike in South face of power pole at center of Dugan on North side of T&M.  
 B.M. 113.59 R.R. Spike in East face of power pole 450.0 ft. North of the North Line of T&M on the West side of Maple Lane.  
 B.M. 121.85 City Sid. Disc 33.7 ft. West and 38.3 ft. South of Quarter Section Corner of Dugan Road and Maple Street.

Scale: 1" = 20'



INTERSECTION QUANTITIES

120.2 S.Y.	5" Asphalt Hookups
S.Y.	Asphaltic Conc. Pavement ( " Bituminous Base)
72.8 S.Y.	Asphalt Removed
L.F.	Combined Curb & Gutter
10	L.F. 36x122 CMP
2	Large Trees to Be Removed
S.F.	4" Walk
78.0	C.Y. Excavation
30.6	C.Y. Compacted Fill
Lbs.	Reinforcing Steel
S.Y.	Manipulation
Tons	Lime or Cement
S.Y. V.G.	Concrete & Asphaltic Concrete Base

Note: Sidewalk Construction by Others

Maple Lane  
 S.L. Maple to and including Cul-de-Sac  
 912-76-295-80582-000-000-001

4/6

FILMED FROM THE BEST AVAILABLE COPY .....

MEASURED QUANTITIES FOR FINAL ESTIMATES ON PAVING

Form 192-066

STREET NAME NAPLE LANE FROM SW NAPLE TO SW 11th AVE CONTRACTOR MID-KANSAS KIND OF PAVEMENT 5" AC/6" ASP

Sta.	Width	Dist.	Av. Width	Area	Square Yards Pavement	End Zone		Dist.	Av. Area	Volume	Cubic Yards Excavation	6" OR 8" DR	TREE REM (INCL. TAX, TRUNK, BRN)	STAMP
						At Station	Area							
0+12.5	26.0		1217	260		0+150	1034	12.5	2745			328		
0+12.5	26.0		1217	260		0+162	915					314		
12+00	26.0		60.0 x 13.0			0+162	41.9	10.0	49.35	FILLET 18.22Y		349		
			30' x 18' x 30'	3421.05Y		0+172	56.8					333	HEDGE REM (INCL. TAX & BRN)	
						0+172	62.9					333	10+40 TO 13+11 = 271 LF	
						1+50	34.7	50.0	30.9			478	(3+55) DR BRN 2" ASP (INCL. TAX)	
			2.5 x 31.1'			2+00	27.1	50.0	22.25			184	10" x 0.67 = 6.7 SF	
			+ 55.3 + 62.0			2+50	31.4	50.0	22.05			188	10" LF SAW	
			- 65.2 x 13.0 x 2.6			3+00	26.7	50.0	26.15			2,795 SF		
			- 69.10 x 13.5 x 2.2			3+50	25.6	50.0	25.15					
			+ 2 x 13.58			4+00	24.7	50.0	28.7					
			1,168.403	132.05Y		4+50	38.7	50.0	40.85			12+50	56.5	40.0 71.25
						5+00	42.0	50.0	40.35			12+90	86.0	25.0 64.4
						5+50	38.7	50.0	33.0			13+15	42.8	5.0 40.05
						6+00	37.3					13+20	37.3	3.5 37.15
						6+50	21.8	51.0	21.05			13+22	37.0	
						6+51	20.3	45.0	19.3					42,231.30 2,316.6 SF
						6+56	18.3			FILLET 13.60Y				
						6+58	15.5	36.0	18.3					TOTAL 2,340.45Y
						6+59	21.1							PROP ~ 40,480.5 ÷ 43,501.9 x 2,340 = 2,177.9Y
						6+59	18.9	15.0	25.35					CITY ~ 3,021.6 ÷ 43,501.9 x 2,340 = 163.9Y
						6+59	31.8							
						6+59	42.8	30.0	44.65					
						6+59	46.5							
						6+59	35.5	15.0	32.25					
						6+59	22.0							
						6+59	49.5	54.0	43.25					
						7+50	42.0	50.0	50.35					
						2+00	51.7	50.0	50.55					
						8+50	49.4	50.0	48.4					
						9+00	47.4	50.0	53.8					
						9+50	60.2	50.0	60.0					
						10+00	59.8	50.0	64.65					
						10+50	69.5	50.0	62.25					
						11+00	68.2	50.0	71.65					
						11+50	75.1	50.0	74.6					
						12+00	74.1	50.0	65.3					
						12+50	54.5							

Measured By RAVEAR  
 Date NOV 82  
 Book No. BR 31  
 Finished By TATE

*No Subgrade Mon*

Property	City	Totals	PIPE REM	3" BIT	5" FCU	8" V.G.	Square Yards Pavement	Int. Cb.	C & G	6" Dr.	Cubic Yards Excavation	SAW CUT	WALK	HEED	LOG	EM	BOXES	STAMP	WOOD	FE	RIP
			349	7384	0.0	132.0	3,431.0	134.4	2,365.3	2,793	2,177	100	67	0.0	6	6	0	1	271	671	14
			0	0.0	100.0	84.3	86.7	42.6	0.0	0	163	00	00	72.3	0	0	10	0	0	0	0

**FILMED FROM THE BEST AVAILABLE COPY.....**

11/1/82  
 80-80-11717  
 11/1/82  
 80-80-11717

DATE		STATEMENT OF COST				PROJ. NO. 4127624500582.000.000.001		P.E.
NOV 82		FOR CONSTRUCTION OF: MAPLE LANE S.I. MAPLE TO & INCL. CUL-DE-SAC						102,074.85
		WORKING DAYS ~ OK						12
QUANTITIES		UNIT	CONSTRUCTION ITEMS		COSTS			
PROP.	CITY	TOTAL	PRICE		PROP.	CITY	TOTAL	
3,431	87	3,518	8.09	50 YDS. 2" RC (6" BIT BASE)	27,756.79	703.83	28,460.62	
788	0	788	4.40	50 YDS. 3" BIT BASE	3,467.20	0.00	3,467.20	
2,365	0	2,365	5.65	LIN. FT. CONC. CURB & GUTTER	13,362.25	0.00	13,362.25	
134	43	177	2.00	LIN. FT. INTEGRAL CURB	268.00	86.00	354.00	
132	84	216	20.00	50 YDS. 8" VG. (6" CONC. - 2" RS.)	2,640.00	1,680.00	4,320.00	
2,177	163	2,340	2.30	CU. YDS. EXCAVATION	5,007.10	374.80	5,382.00	
2,793	0	2,793	2.65	50 FT. 6" DRIVE	7,401.45	0.00	7,401.45	
6	0	6	30.00	LARGE TREES REMOVED	540.00	0	540.00	
6	0	6	35.00	SMALL TREES REMOVED	210.00		210.00	
271	0	271	16.00	LIN. FT. LARGE HEDGE REMOVED	4,336.00		4,336.00	
1	0	1	20.00	STUMP REMOVED	20.00		20.00	
271	0	271	1.00	LIN. FT. FENCE REMOVED	271.00		271.00	
249	0	249	2.75	LIN. FT. PIPE REMOVED	684.75		684.75	
7	0	7	0.40	50 FT. CONC. WALK REMOVED	2.80		2.80	
14	0	14	23.00	50 YDS. RIP-RAP (TYPE III)	322.00		322.00	
10	0	10	0.60	LIN. FT. SAWED JOINT	6.00	0.00	6.00	
0	160	160	12.50	50 YDS. ASPH. HOOP-UP	0.00	2,000.00	2,000.00	
0	10	10	40.00	LIN. FT. 36" X 22" CMPR	0.00	400.00	400.00	
0	73	73	0.65	50 YDS. ASPH. REMOVED	0.00	47.45	47.45	
				SUBTOTAL	66,295.34	5,292.18	71,587.52	
				ENGINEERING AND INSP.	10,909.87	871.85	11,781.72	
				ADMINISTRATION	994.35	79.46	1,073.81	
				PUBLICATION	54.50	-	54.50	
				ABSTRACTING	7.00	-	7.00	
				CONSTRUCTION COST	78,261.06	6,243.49	84,504.55	
				TEMP. NOTE INT.	3596.04	287.37	3,883.41	
				TOTAL COST	\$81,857.10	\$6,530.86	\$88,387.96	

FILMED FROM THE BEST AVAILABLE COPY.....