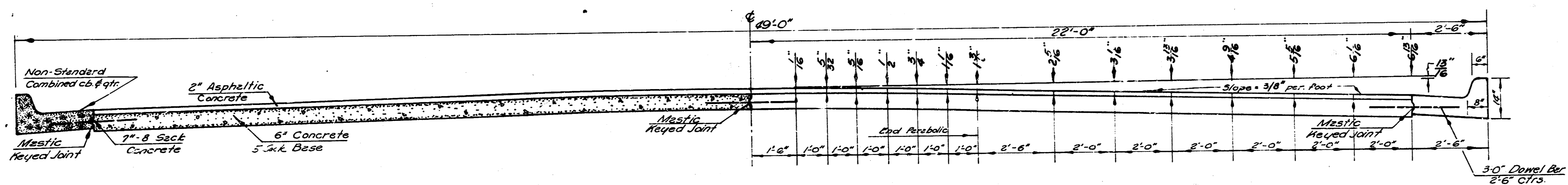
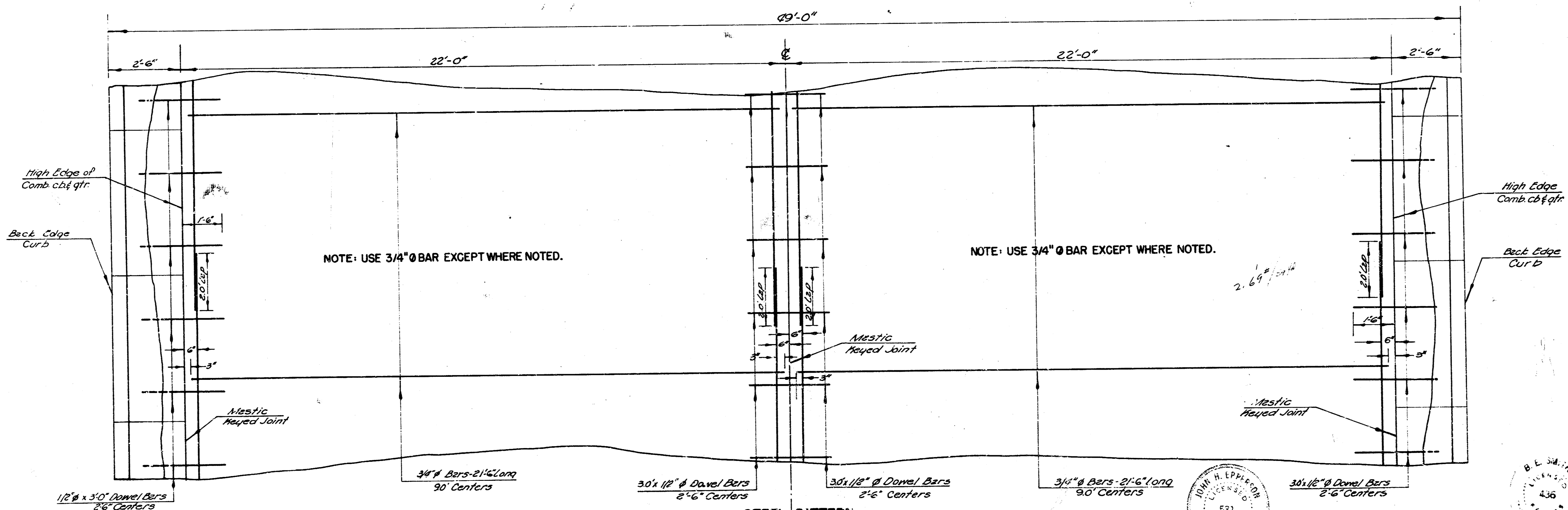


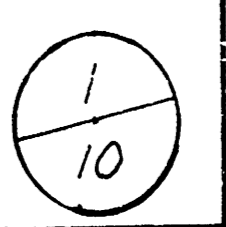
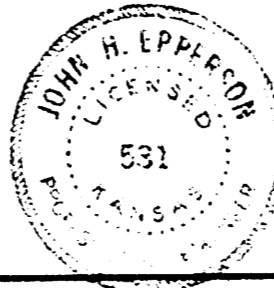
**MAPLE STREET**  
 EL. WEST-EL. SHERIDAN  
 PROJCT C16-168  
 C16-167



TYPICAL SECTION  
 SCALE-1"=2'-0"



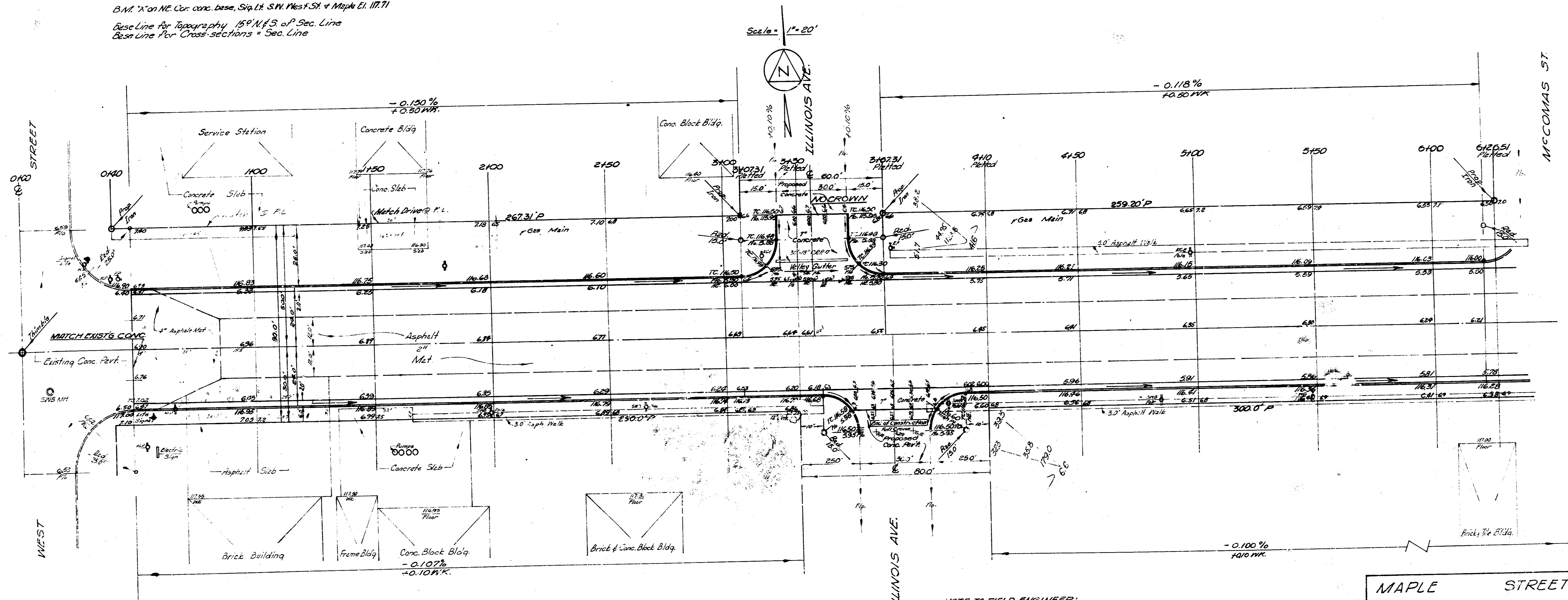
STEEL PATTERN  
 SCALE-1"=2'-0"



B.M. X on NE. Cor. conc. base, Sig. Lt. S.W. West St. + Maple El. 117.71  
 Base Line for Topography 159' N.P.S. of P. Sec. Line  
 Base Line for Cross-sections + Sec. Line

B.M. R.R. Spike, 53 P.P. 1/4, S.E. Cor. McCombs & Maple El. 117.54

Scale = 1" = 20'



EXCAVATION TOTALS  
 PROF. 5103.1 CY  
 CITY 370.1 CY  
 WIDENING'S 2290.3 CY

NOTE TO CONTRACTOR & FIELD ENGINEER:  
 All entrance pipes will be disposed of in accordance with City Dir. & Checker.

NOTE TO FIELD ENGINEER:  
 The average thickness of the Asphalt 1 1/2" above the 6" (6") also the average thickness of Asphalt 1 1/2" in 12". The actual location of manholes and same in field is shown as per plan in the regular location of manholes constructed.

NOTE TO FIELD ENGINEER:  
 All 'IRONS' to be driven to below finished grade of the street in same and 'CONCRETE' Manholes 48" in dia. Line of center of adjoining streets. NESSLER, LEONINE & ALL-FOLLOWS.

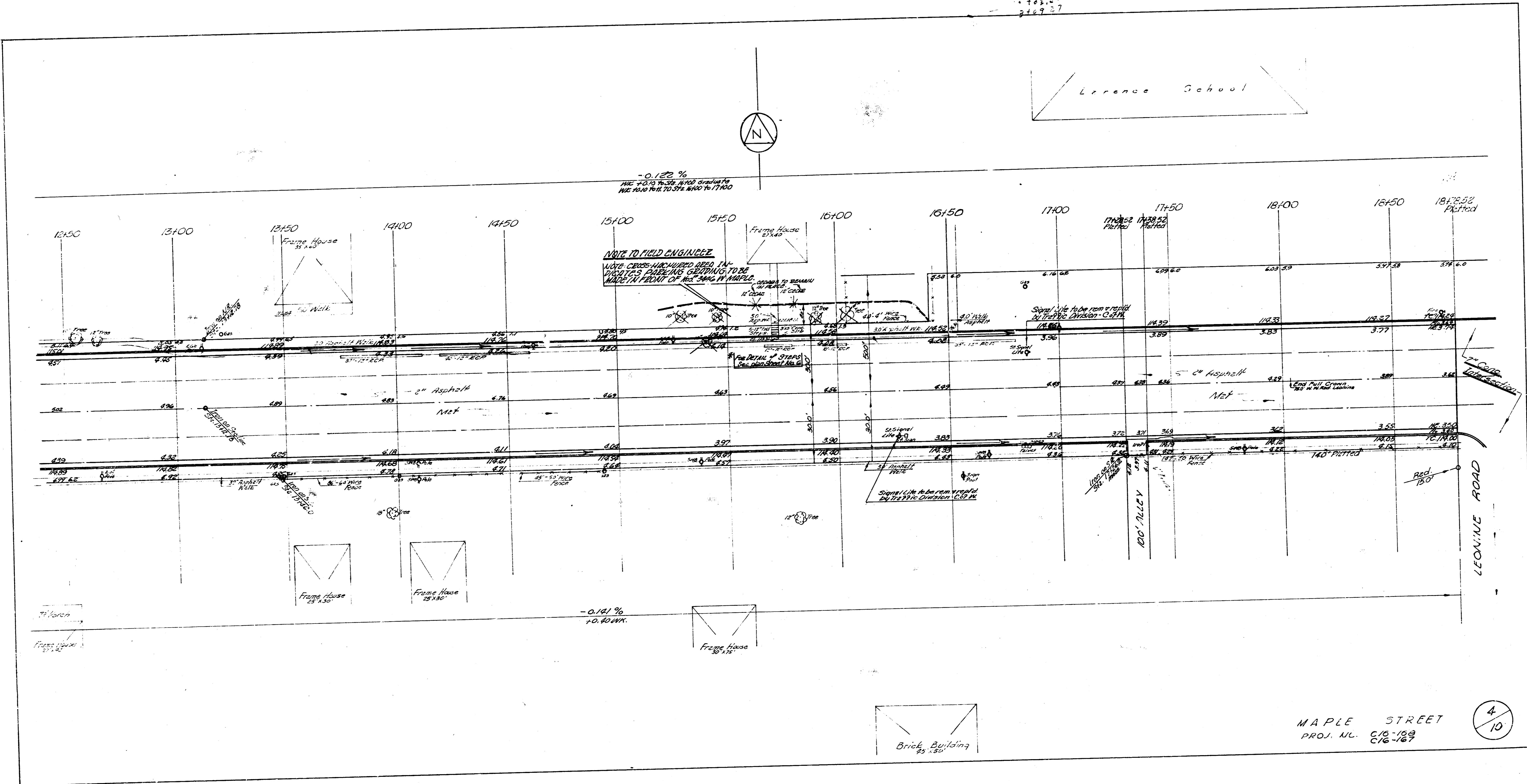


2/10

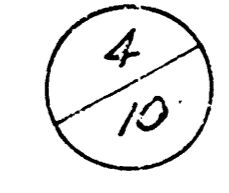
MAPLE STREET  
 EL. WEST ST. EL. SHERIDAN ST.  
 26-2-30 ASPH. CONC.  
 WIDEN TO 48.0'  
 CITY OF WICHITA, KANS.  
 B. E. SMITH CITY ENGINEER  
 DATE JULY 1958 PROJ. NO. C16-168



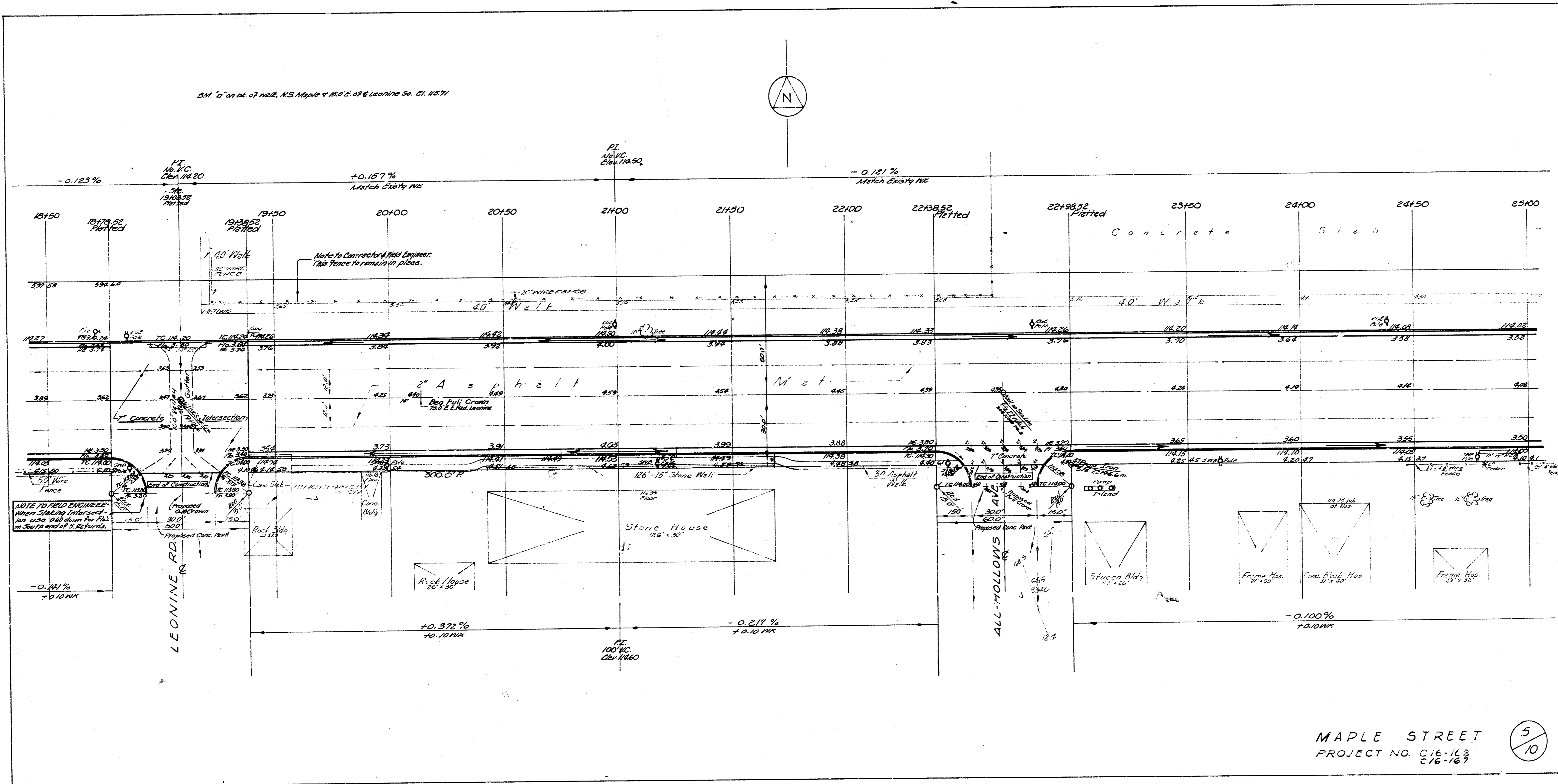
13.12.71  
102.1  
267.7



MAPLE STREET  
PROJ. NO. C/12-123  
C/16-167

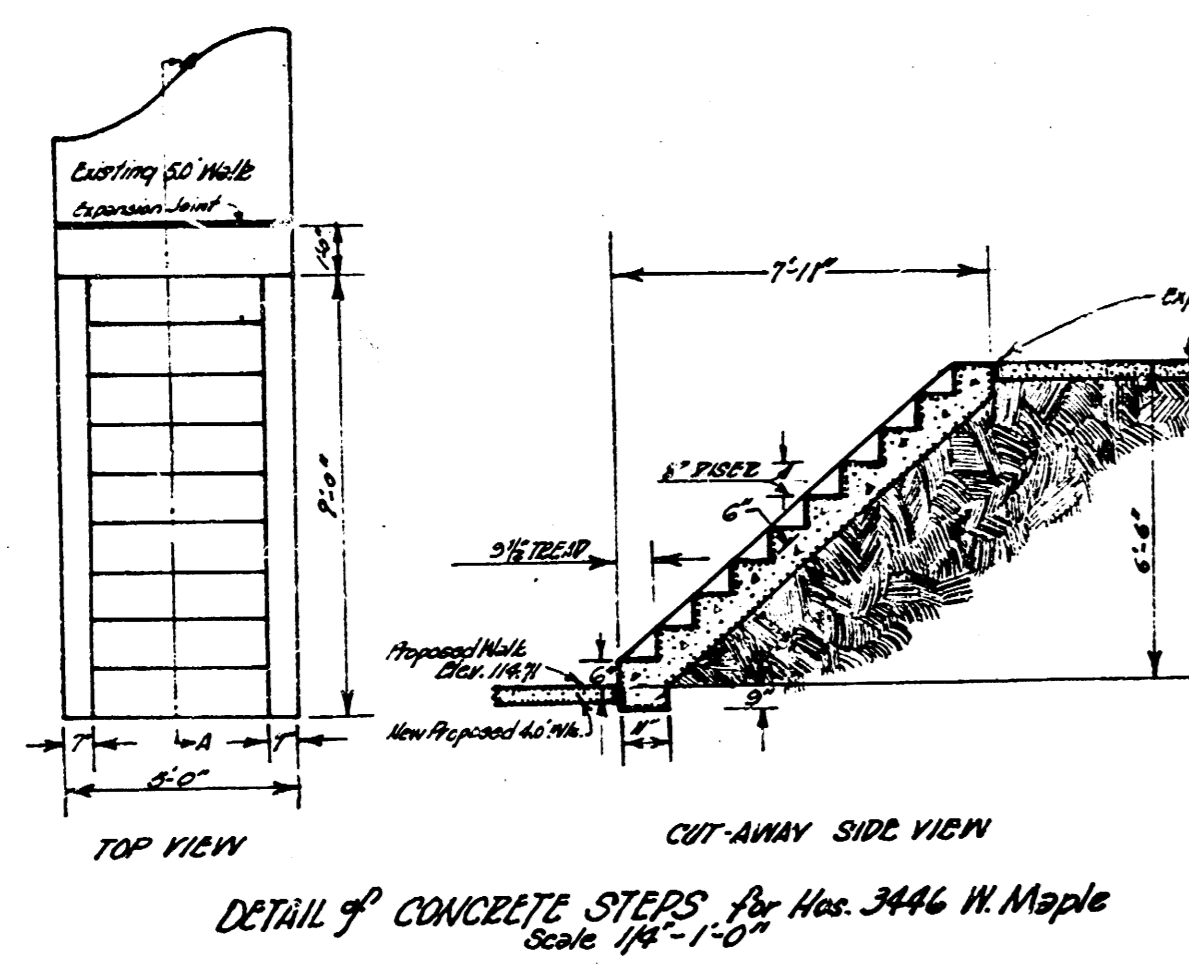


BM. 12 on pt. of well, N.S. Maple & 150' of Leonine St. CI. 11571

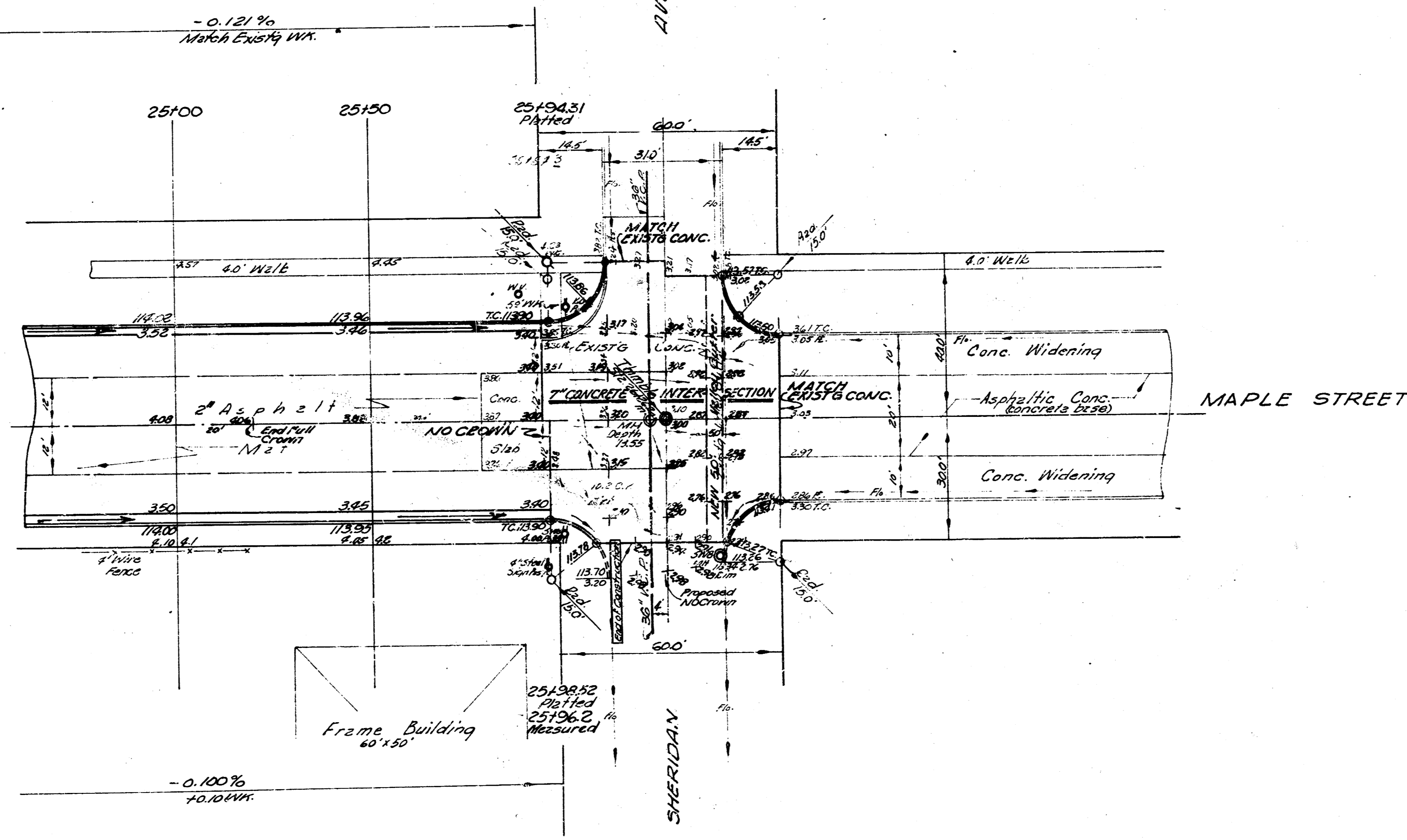


MAPLE STREET  
PROJECT NO. C16-163  
C16-163

5  
10



BM. 72' on S.E. corner parking area, NW. Sheridan & Maple E.I. 114.23  
BM. Standard, NW. Cor. Sheridan & Maple E.I. 116.01



MAPLE STREET  
PROJ. NO. C/S-189  
C/S-187

