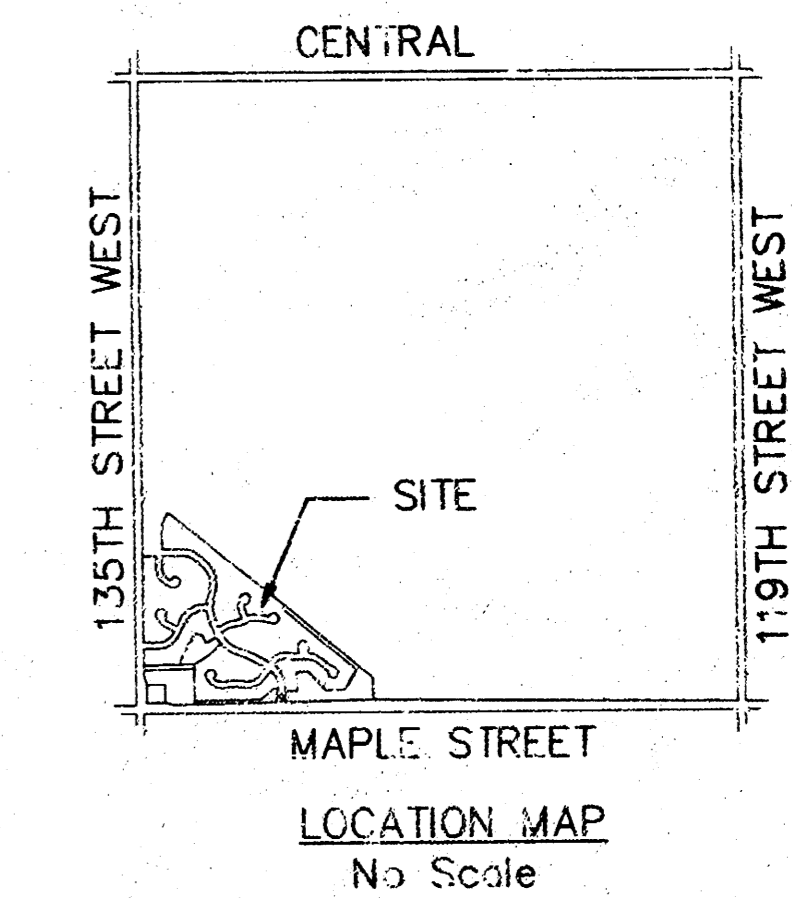
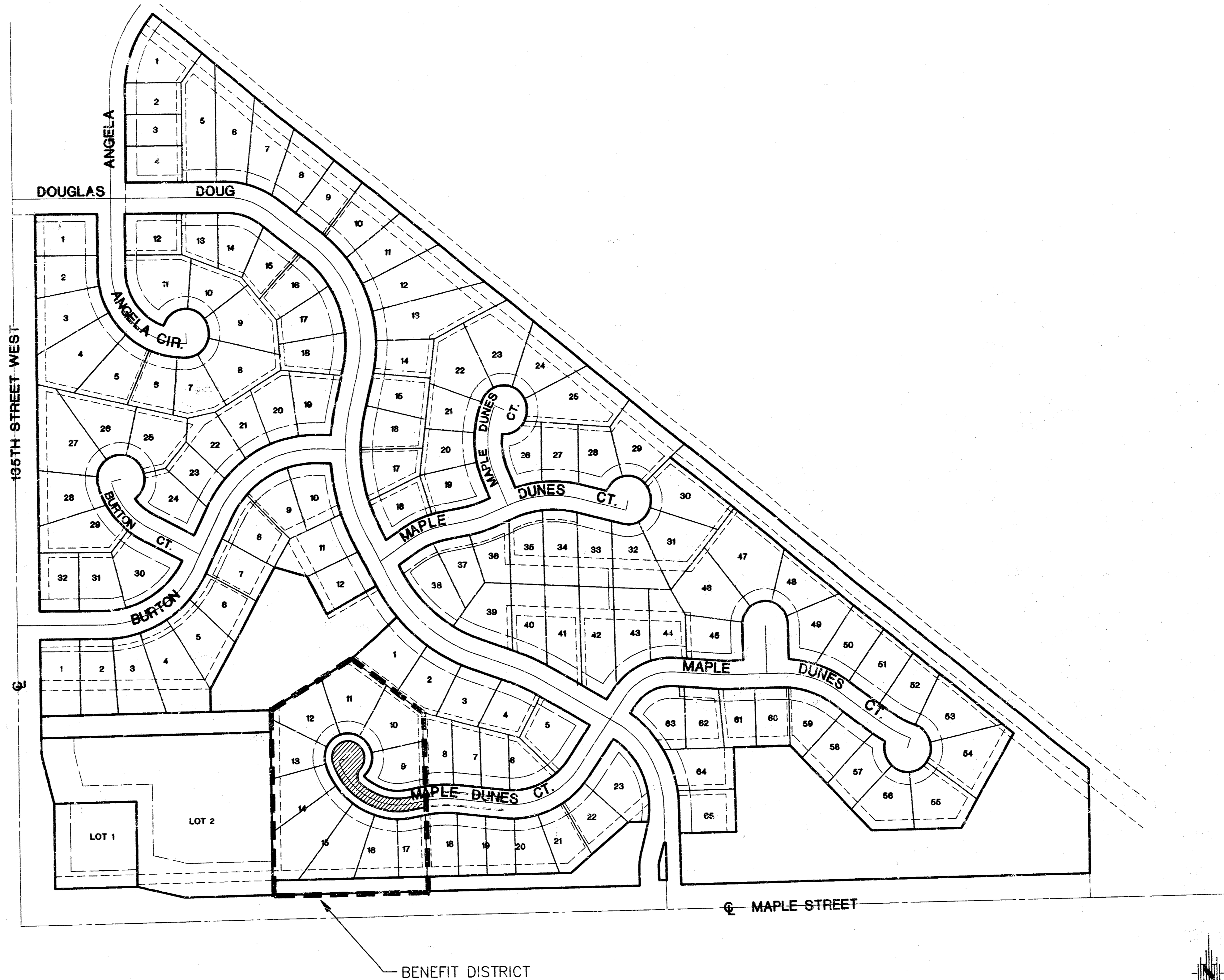


CONSTRUCTION PLANS FOR STREET IMPROVEMENTS MAPLE DUNES ADDITION - PHASE III TO THE CITY OF WICHITA, KANSAS POE PROJECT NO. 1686A

GENERAL NOTES:

- Utility service lines, poles, valve boxes, meters and etc. are to be adjusted as necessary by others prior to construction unless the plans specifically call for their adjustment by the Contractor. Existing utilities and their location, as shown on the plans, represent the best information obtainable for design. The Contractor will be required to work around existing utilities within the right-of-way which do not conflict with proposed construction.
- A saw cut of at least one-half the depth of existing surface courses or one-fourth the depth of the existing total pavement thickness shall be provided at locations where proposed construction abuts an existing surface course or pavement for which partial removal of that surface or pavement is required. Sawn joint to facilitate removal within three (3) feet of existing joints will not be permitted and for such instances the limits of removal shall extend to the existing joint. Such saw cuts will not be paid for directly and this cost shall be considered as subsidiary to the project costs.
- Rubble from the removal of miscellaneous structures and excess excavation which is to be wasted shall be disposed of on sites to be provided by the Contractor. These sites shall be approved by the Engineer as to suitability, appearance and site location. Locations that, in the opinion of the Engineer, will leave an unsightly appearance will not be approved.
All suitable excavation shall be wasted on low lying lots within the addition before any material is disposed of off site.
All disposal sites must be approved by the Kansas Department of Health and Environment. Material either stockpiled or disposed of in a flood plain would require a Kansas State Board of Agriculture permit. Any material dumped in waters of the United States or wetlands is subject to U.S. Corps. of Engineers permitting regulations. Any material buried or stockpiled beyond approved construction limits would require additional archaeological investigations unless buried in a previously approved borrow location.
- Trees and shrubs in public right-of-way which are in direct conflict with proposed new construction shall be removed by the Contractor with the Engineer's approval. Trees and shrubs which are not in direct conflict with proposed new construction shall be saved and protected from damage.
- Limits of earthwork shall match existing ground elevations at the right-of-way line unless otherwise noted on the plans with a new finished grade elevation. When a new finished grade elevation is shown, the earthwork shall extend one foot beyond the right-of-way line and then slope up of down using permissible slopes to match the existing ground surface.
- The Contractor shall be responsible for preserving property irons. The Contractor will be required to reestablish any property irons which are damaged or destroyed by his construction operations. Such irons shall be reestablished by a licensed land surveyor in accordance with state laws.
- All transition curb paid for as Roll Top Curb.
- Trees are to be removed as needed. The cost is subsidiary to street construction costs.
- All disturbed areas within street right-of-ways shall be seeded with Kansas Perennium Blend Fescue and Mulch within 14 days of disturbance at a rate of 200 lbs. per acre. (See Sheet 9 for additional seeding req.)

MICHAEL E. LINDEBAK, P.E. - CITY ENGINEER
PROJECT NO. 472-82831
OCA # 765616
MAPLE DUNES CT. ADJACENT TO LOTS 9-17, BLOCK 4



BENCH MARKS

- City of Wichita std. disk on headwall at northeast corner of 135th & Maple, 34' Northeast of Southwest corner of Section 24-T27S-R2W. Elev. 150.20
- City of Wichita std. disk at Southwest corner of 135th and Rolling Hills Drive, 1/4 mile South of Central, 47' East of CL 135th, 31' South of CL Rolling Hills Drive, 14' South of South curb line. Elev. 161.88
- City of Wichita std. disk on Southeast corner of East hub-guard of RCB under Forestview, 86' North of CL Maple. Elev. 135.58

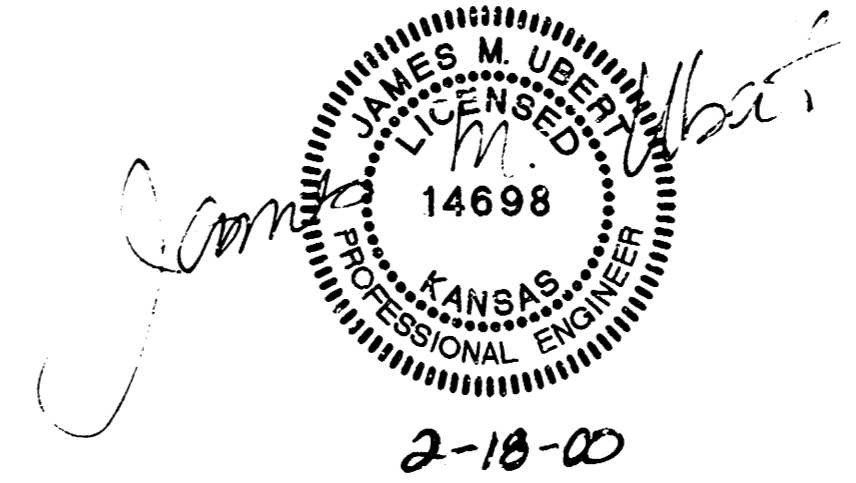
TOTAL PROJECT LENGTH: 262.54 L.F.

(WITHIN R/W) EARTHWORK SUMMARY

Excavation	40 C.Y.
Compacted Fill	143 C.Y.
Loose Fill	432 C.Y.
Ditch Excavation	930 C.Y.
Maple Ditch Fill	335 C.Y.
Waste	60 C.Y.

JANUARY 2000

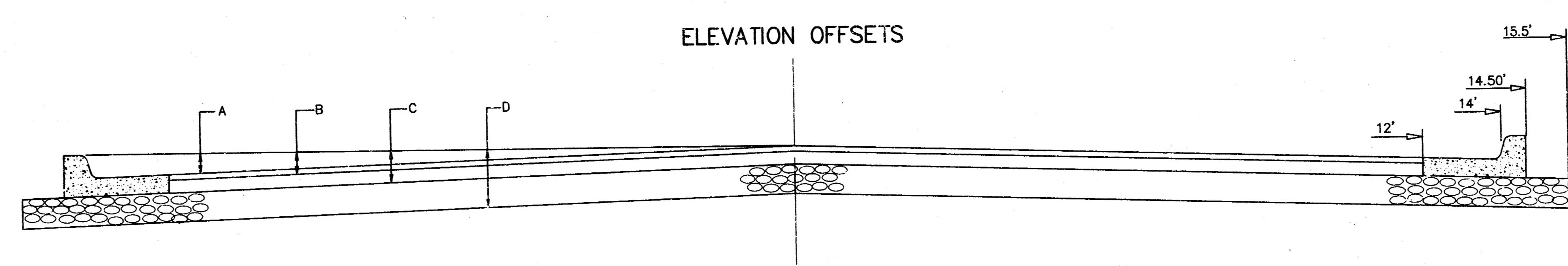
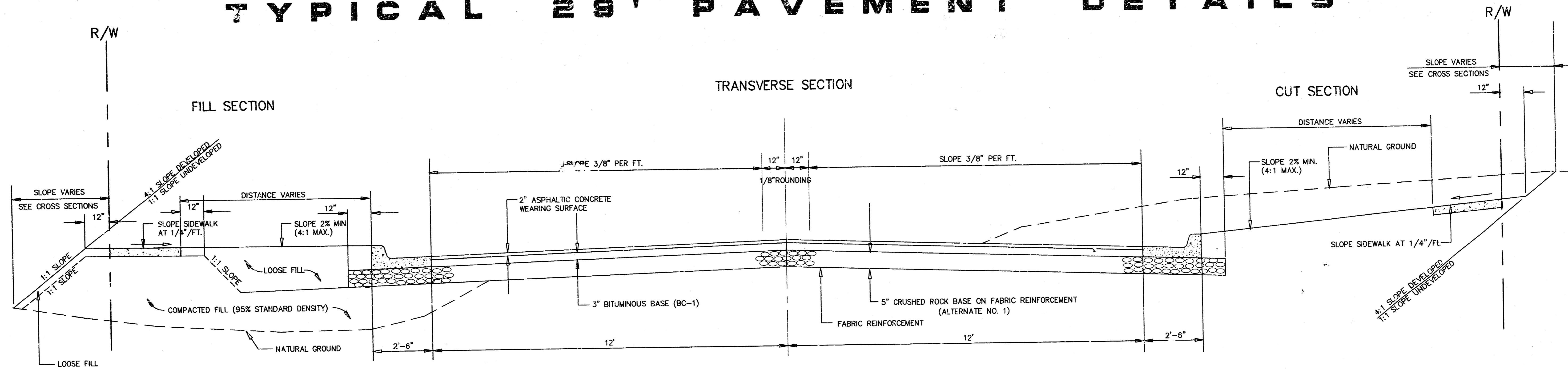
PE POE & ASSOCIATES OF KANSAS, INC.
CONSULTING ENGINEERS
3940 E. Central, Suite 200 ■ Wichita KS 67208 ■ 316/695-4114 ■ Fax 316/685-4442



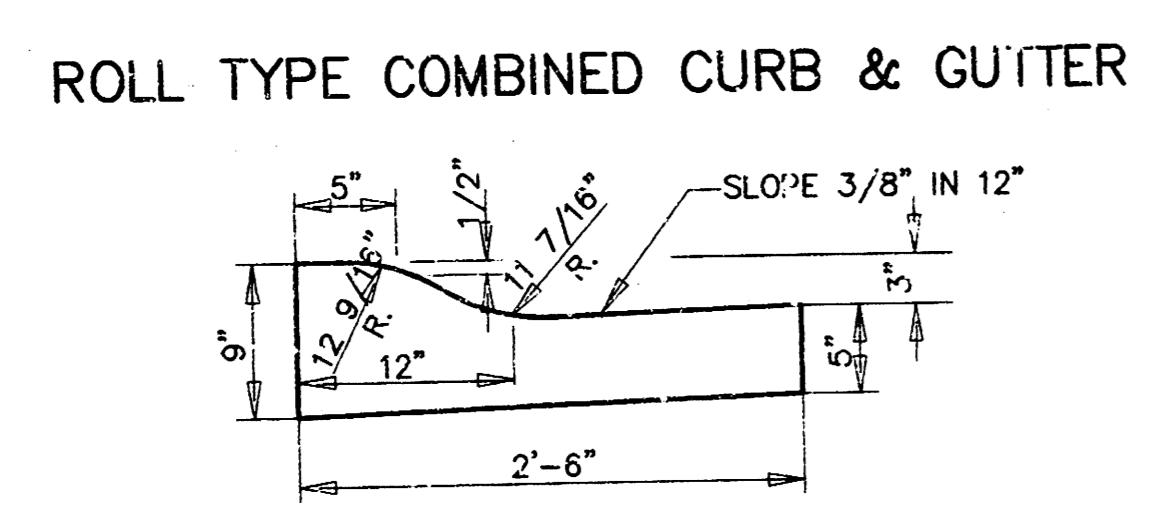
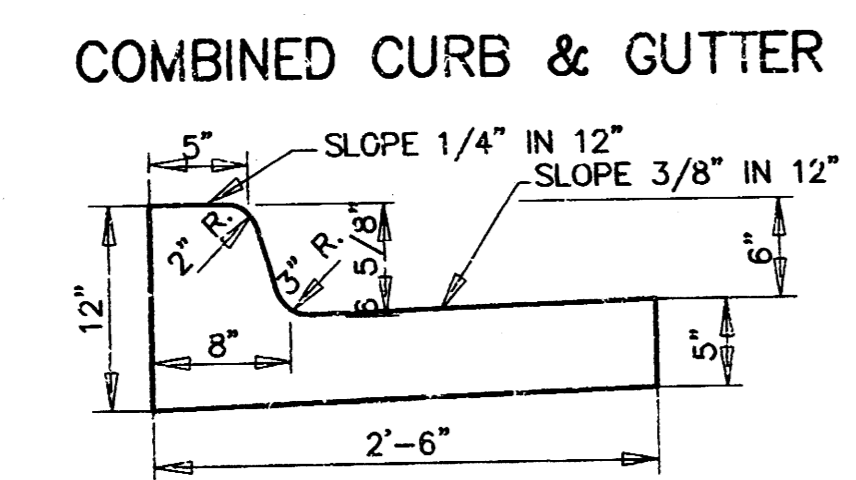
Scale 1" = 150'

SHEET 1 OF 10

TYPICAL 29' PAVEMENT DETAILS



	DISTANCE FROM CENTERLINE (LT. & RT.)									
	0'	2'	4'	6'	8'	10'	12'	14'	14.5'	15.5'
A: TOP OF CURBS TO TOP OF SURFACE LIFT	0.13	0.18	0.24	0.30	0.33	0.36	0.43	0.49	-	-
B: TOP OF CURBS TO TOP OF UPPER BASE LIFT	0.30	0.35	0.41	0.47	0.50	0.53	0.60	0.66	-	-
C: TOP OF CURBS TO TOP OF LOWER BASE LIFT	0.55	0.60	0.66	0.72	0.75	0.78	0.85	0.91	0.98	1.00
D: TOP OF CURBS TO BOTTOM OF ROCK	0.97	1.02	1.08	1.14	1.17	1.20	1.27	1.33	1.40	1.42



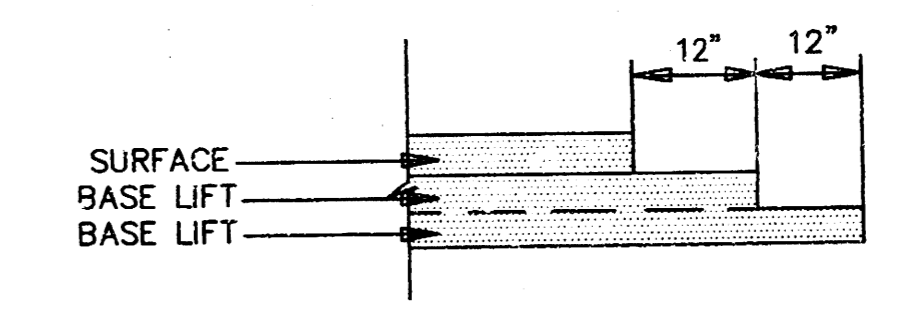
- SUBGRADE ALTERNATES**
- ALTERNATE NO. 1
5" CRUSHED ROCK BASE ON FABRIC REINFORCEMENT
 - ALTERNATE NO. 2
5" RECYCLED ASPHALT PAVEMENT BASE ON FABRIC REINFORCEMENT

CRUSHED ROCK & RAP GRADATION REQUIREMENTS
Percent of Aggregate Retained

2-1/2"	0
3/4"	20 - 60
#4	50 - 80
#40	80 - 94
#200	90 - 98

ROCK QUALITY SHALL CONFORM TO THE REQUIREMENTS SPECIFIED BY THE KDOT 1990 EDITION STANDARD SPECIFICATION SUBSECTION 1102 FOR DURABILITY CLASS 1.

FABRIC BASE REINFORCEMENT SHALL BE 8 x 1100 BY TENSAR CORP. OR APPROVED EQUAL. FABRIC BASE REINFORCEMENT SHALL BE INSTALLED IN ACCORDANCE WITH MANUFACTURER'S RECOMMENDATIONS. CRUSHED ROCK SHALL BE UNIFORMLY GRADED FROM 1 1/2" MAXIMUM SIZE TO NOT MORE THAN 10% PASSING A NO. 200 SIEVE. ROCK QUALITY SHALL BE THE SAME AS SPECIFIED FOR COARSE AGGREGATE FOR CONCRETE MIXES.



TRANSVERSE CONSTRUCTION JOINTS

TRANSVERSE CONSTRUCTION JOINTS SHALL BE CONSTRUCTED IN FLEXIBLE BASE PAVEMENTS AT LOCATIONS WHERE PAVEMENT JOINTS EXISTING FLEXIBLE BASE PAVEMENT AS SHOWN BY THE DETAIL. ALL COSTS ASSOCIATED WITH THE CONSTRUCTION OF THE TRANSVERSE JOINT SHALL BE INCLUDED IN THE BID PRICE FOR SQUARE YARDS 5" ASPHALTIC CONCRETE PAVEMENT (3" BITUMINOUS BASE)

GENERAL NOTES

ROCK BASE IS TO BE COMPACTED AND SMOOTHED WITH A STEEL FACED ROLLER PRIOR TO PLACEMENT OF ASPHALT. TACK COAT WILL NOT BE APPLIED TO ROCK BASE.

A TACK COAT OF EMULSIFIED ASPHALT (SC-1H OR CSS-1H) SHALL BE APPLIED AT AN APPROXIMATE RATE OF 0.05 GALLONS PER SQUARE YARD BETWEEN EACH LIFT OF ASPHALTIC MATERIAL.

BITUMINOUS BASE AND ASPHALTIC CONCRETE WEARING SURFACE SHALL BE PLACED WITH A LAYDOWN MACHINE HAVING AUTOMATIC CONTROLS FOR LINE AND GRADE.

CONSTRUCTION JOINTS IN EACH LIFT SHALL BE STAGGERED A MINIMUM DISTANCE OF ONE (1) FOOT FROM JOINTS IN PRECEDING LIFTS AND PLACED SO THAT A JOINT WILL BE CONSTRUCTED ON THE CENTERLINE OF THE TOP LIFT.

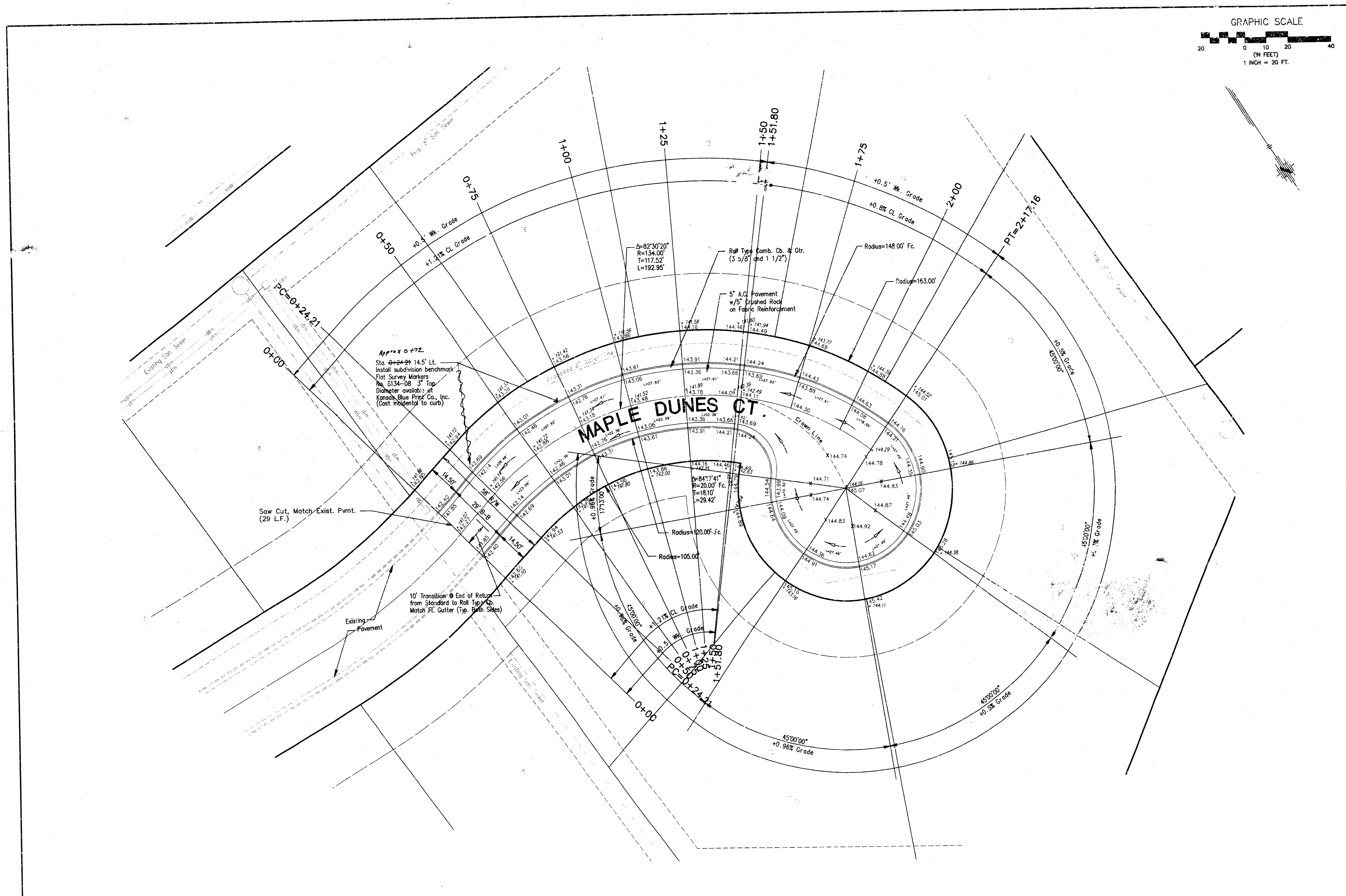
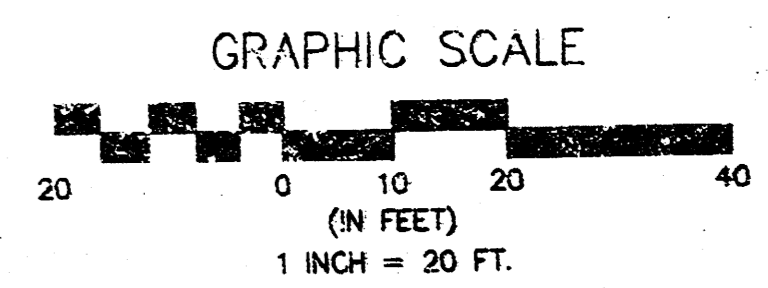
MAPLE DUNES PHASE 3
STREET PAVEMENT DETAILS
TYPICAL 29' PAVEMENT DETAILS
CITY OF WICHITA, KANSAS
MICHAEL E. LINDBERGH, P.E. - CITY ENGINEER
PROJECT NO. 472.0231 OCA NUMBER 755616

POE & ASSOCIATES OF KANSAS, INC.
CONSULTING ENGINEERS
900 E. Central, Suite 200 • Wichita, KS 67202 • Phone: 620.625.1111 • Fax: 620.625.1114

FINAL

Engineer: J. Ubert
Drawn By: M. Perez / E. Kullo
Sheet No.: 1686A
Date: February, 2000

2 of 10



No.	Street and Station	From Cl.	Description	Elevation
1	Maple Dunes Ct. Sta. 0+24.21	14.5' Lt.	Top of S. Curb of Maple Dunes Ct. at the PC, near Lot 17, Block 4, Maple Dunes Addition (26.5' Maple Dunes Ct.)	142.94

NOTE:
All top of curb grades are to top of combined curb and gutter. 0.25' must be subtracted from top of curb elevations for top of roll curb.

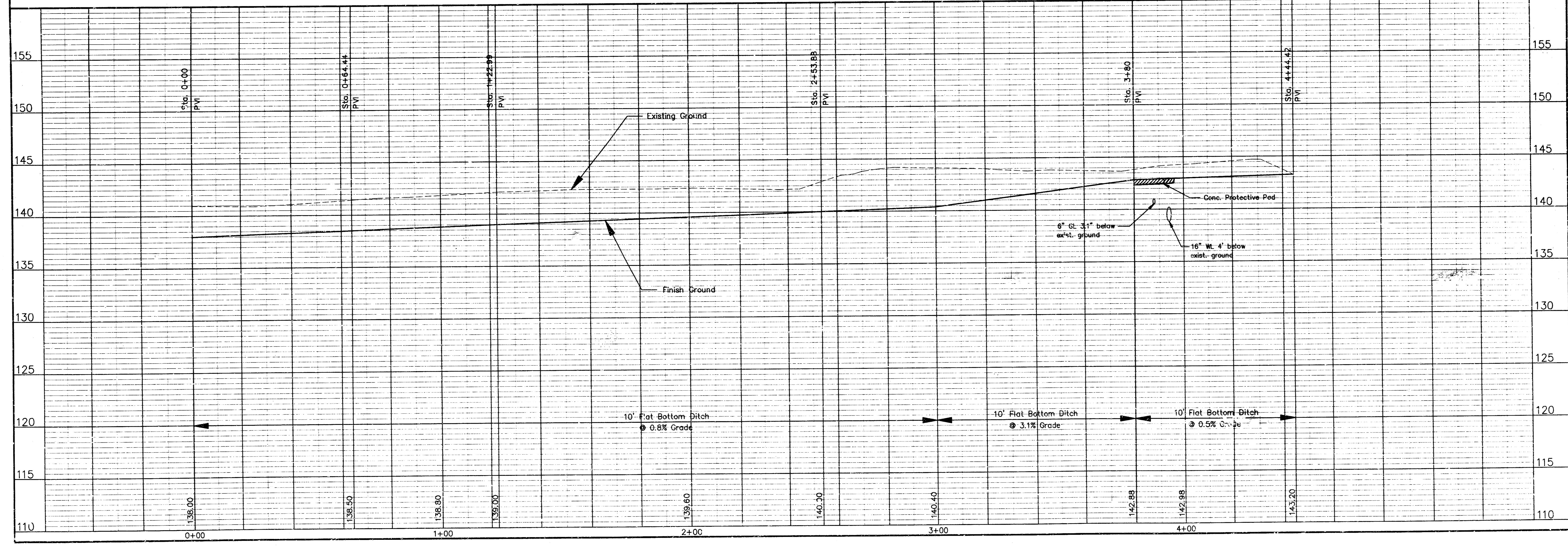
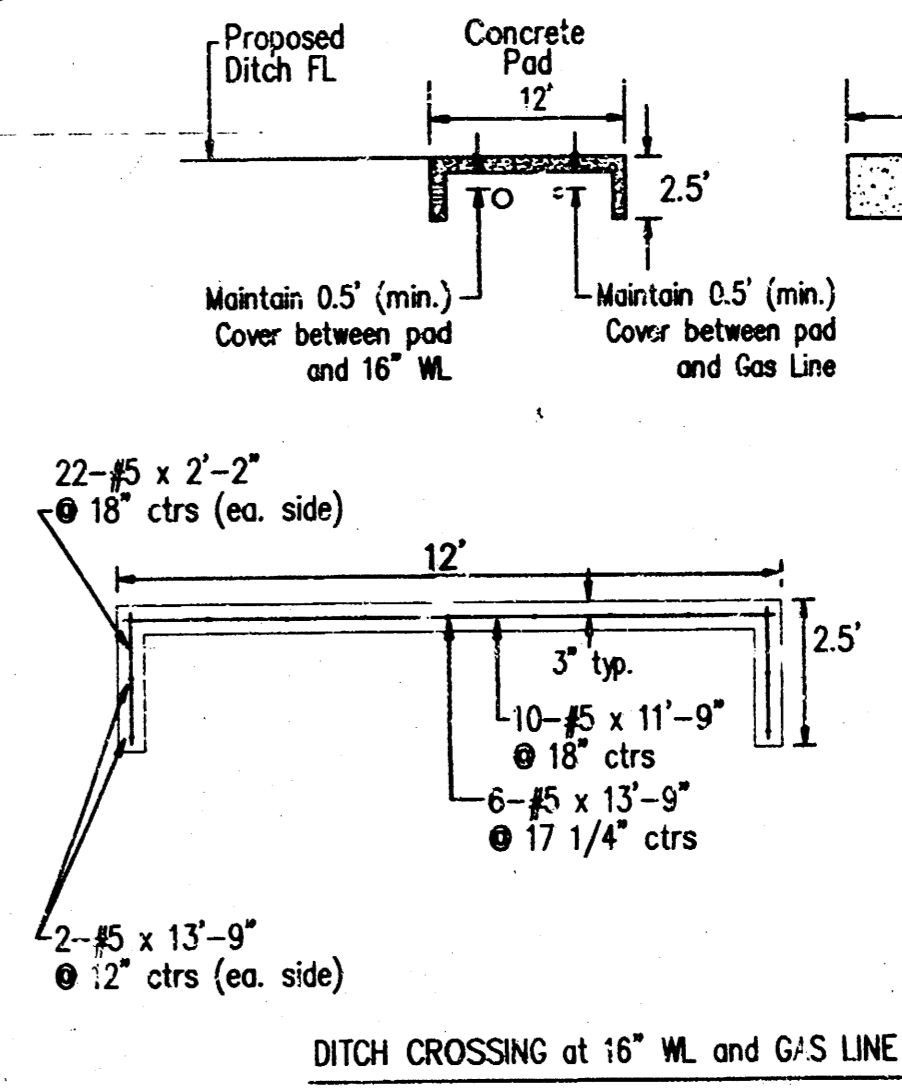
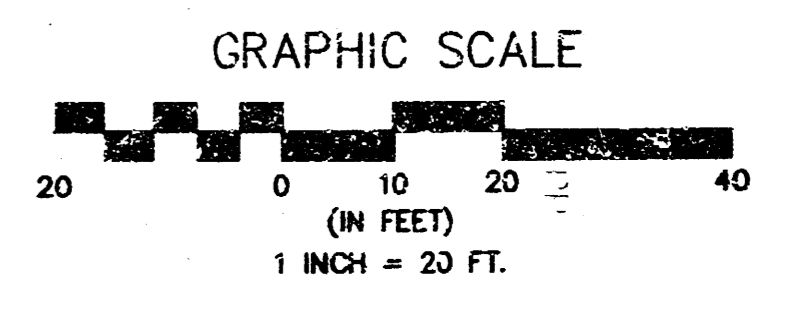
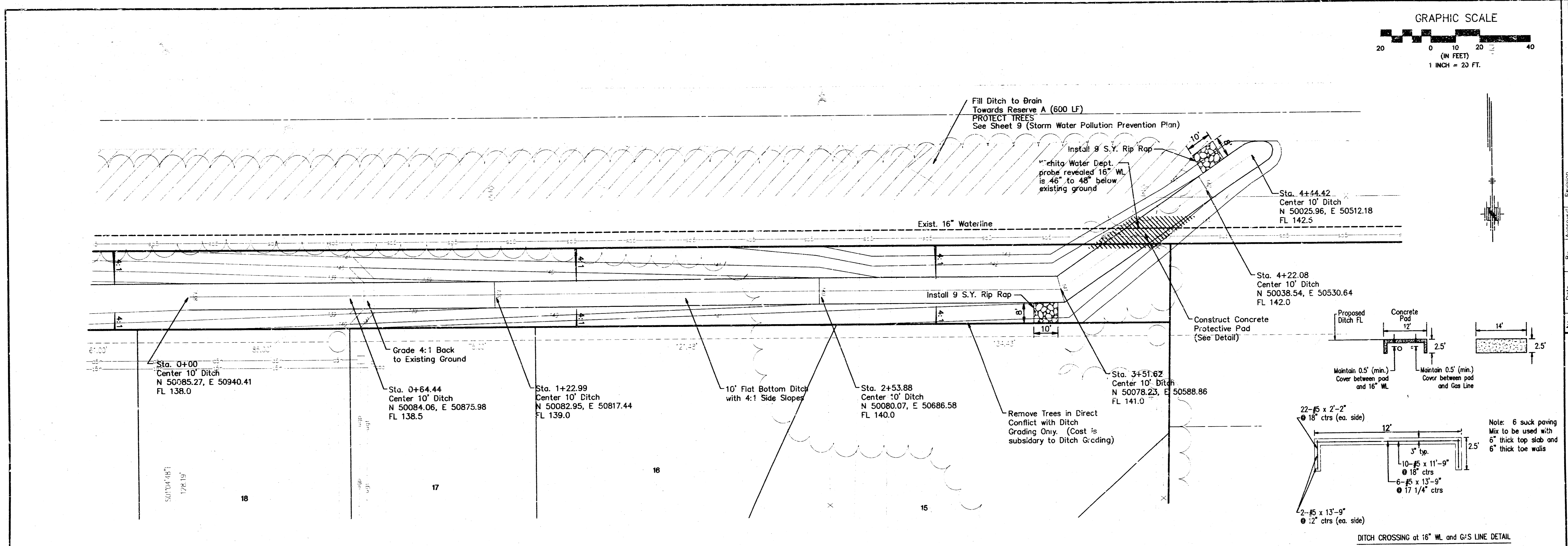
FINAL

Engineer: J. Ubert
 Drawn By: M. Perez / B. Kulla
 P&E Job No.: 1655A
 Date: February 2000

POE & ASSOCIATES OF KANSAS, INC.
 CONSULTING ENGINEERS
 5901 E. Central, Suite 200 • Wichita, KS 67220 • Phone: 620-622-4114 • Fax: 620-622-4144

MAPLE DUNES PHASE 3
 STREET IMPROVEMENTS
 MAPLE DUNES CT.
 CITY OF WICHITA, KANSAS
 MICHAEL E. UNDERBARK, P.E. - CITY ENGINEER
 PROJECT NO. 472.02831 OCA NUMBER 765816

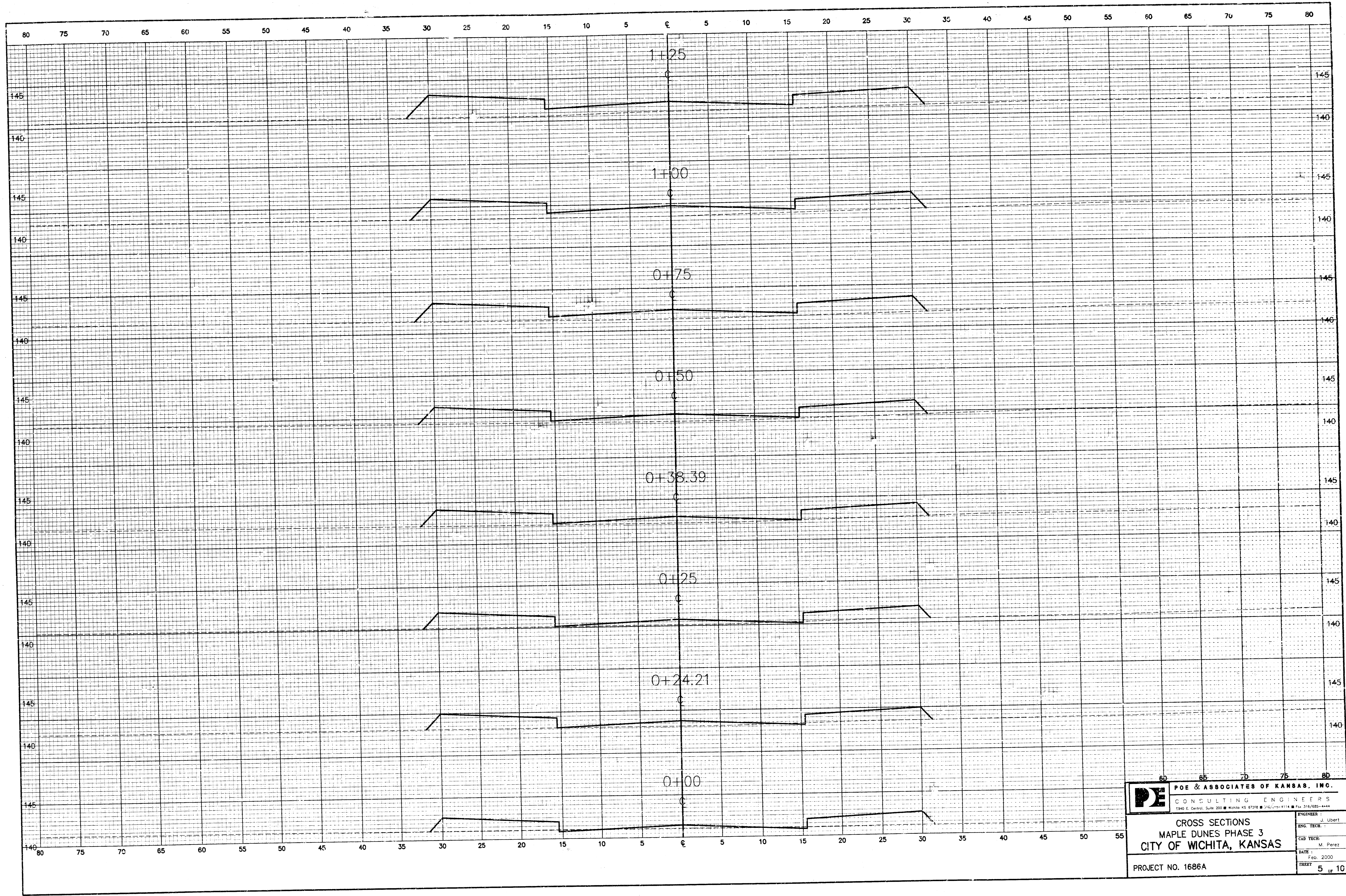
G:\APPS\CAD\10\666\666.dwg Tue Feb 29 14:21:30 2000 Bernard Kullia - POE & ASSOCIATES OF KANSAS INC.



MAPLE DUNES PHASE 3
DITCH
 CITY OF WICHITA, KANSAS
 MICHAEL E. LINDBAK, P.E. - CITY ENGINEER
 PROJECT NO. 472.82833 OCC NUMBER 763816

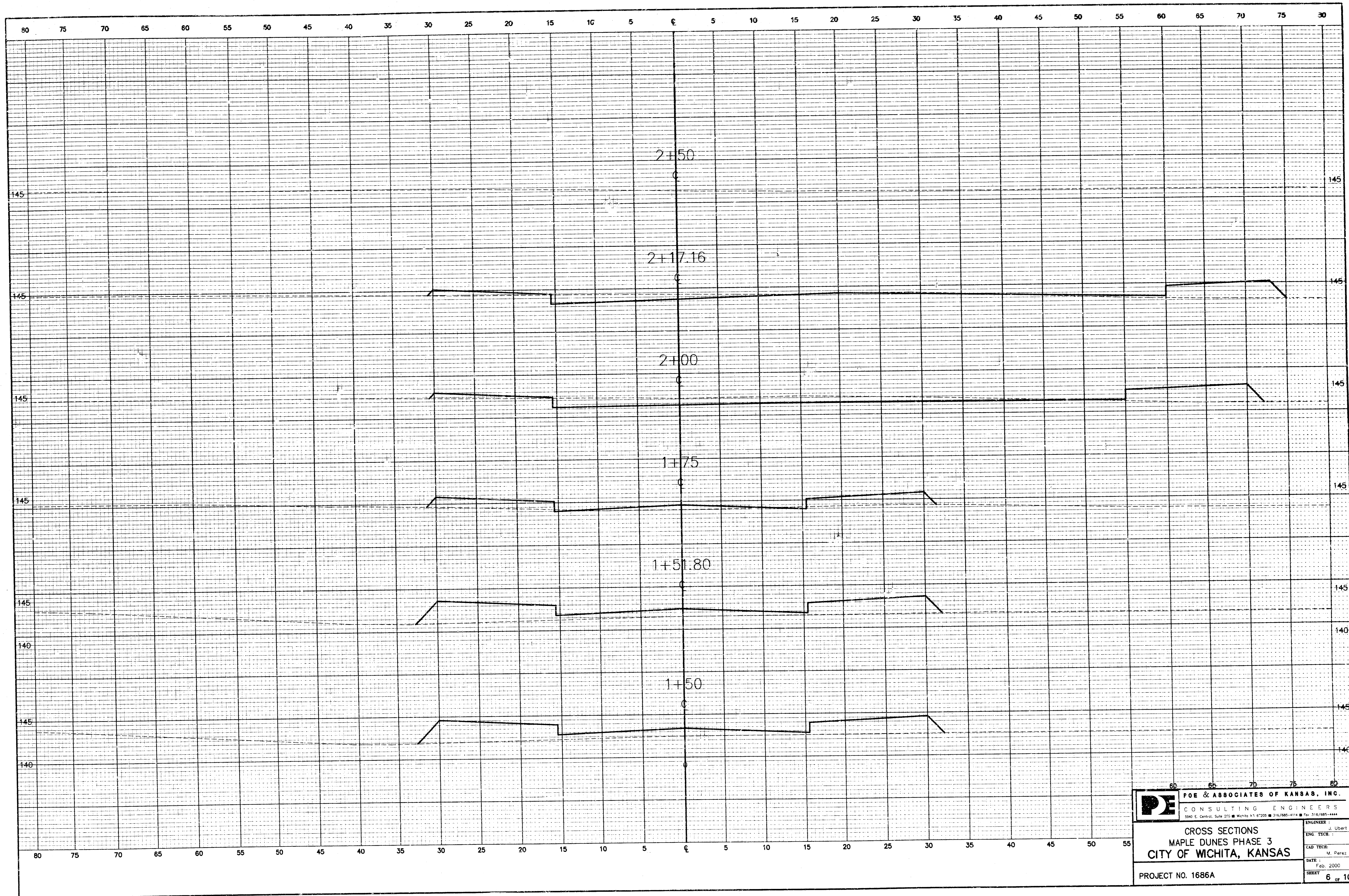
POE & ASSOCIATES OF KANSAS, INC.
 CONSULTING ENGINEERS
 2942 E. Santa Fe, Suite 200 • Wichita, KS 67208 • 316/681-1114 • fax 316/681-1444
PE
 Engineer: J. Leert
 Drawn By: M. Perez / B. Kullia
 POC Job No.: 1636A
 Date: February 2000

G:\MAPS\DC\1686\Subarea.dwg Thu Feb 17 16:31:02 2000 Bernard Kullis - P.E. & ASSOCIATES OF KANSAS, INC.

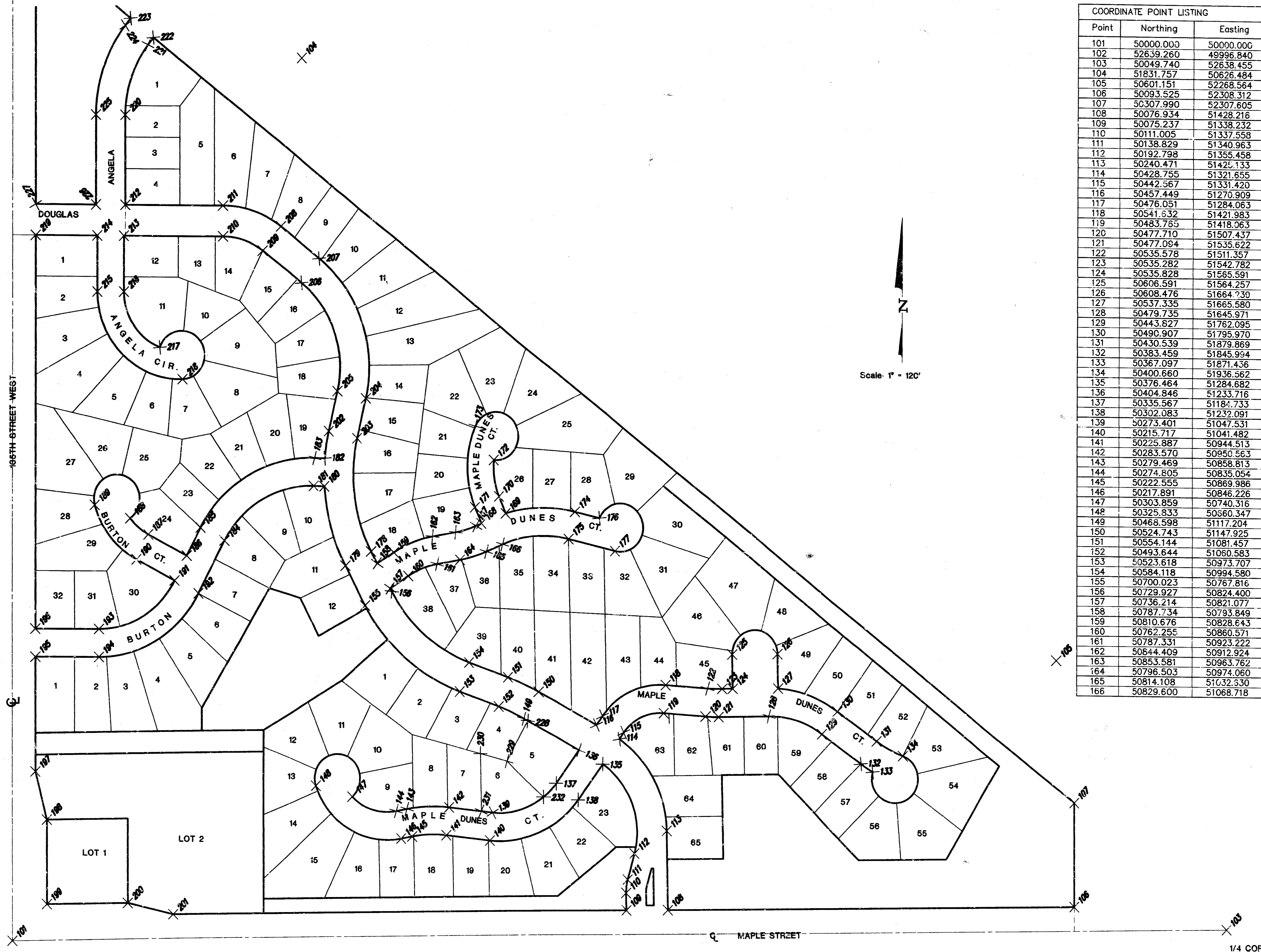


PE	P.O.E. & ASSOCIATES OF KANSAS, INC.	ENGINEER: J. Ubert
	CONSULTING ENGINEERS	ENG. TECH.:
2340 E. Central, Suite 200 • Wichita, KS 67208 • 316.265-4114 • Fax 316.265-4444		CAD TECH.: M. Perez
CROSS SECTIONS		DATE: Feb. 2000
MAPLE DUNES PHASE 3		SHEET: 5 of 10
CITY OF WICHITA, KANSAS		
PROJECT NO. 1686A		

G:\APPS\DCAP\1686\base.dwg Thu Feb 17 16:31:34 2000 Bernard Kulla - PDE & ASSOCIATES OF KANSAS INC.

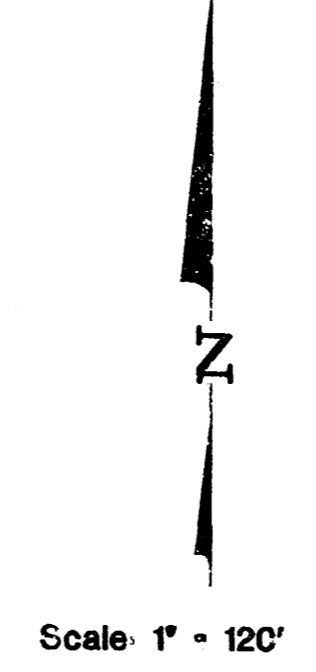


PE	PDE & ASSOCIATES OF KANSAS, INC.
	CONSULTING ENGINEERS 5940 E. Central, Suite 200 • Wichita, KS 67208 • Tel: 316/685-4114 • Fax: 316/685-4444
CROSS SECTIONS MAPLE DUNES PHASE 3 CITY OF WICHITA, KANSAS	
ENGINEER: J. Uebel	CAD TECH: M. Perez
DATE: Feb. 2000	SHEET: 6 of 10
PROJECT NO. 1686A	



COORDINATE POINT LISTING

Point	Northing	Easting	Point	Northing	Easting
101	50000.000	50000.000	167	50867.405	51009.751
102	52639.260	49996.840	168	50872.410	51021.409
103	50049.740	52638.455	169	50893.688	51075.393
104	51831.757	50626.484	170	50928.656	51060.381
105	50601.151	52268.564	171	50905.777	51007.085
106	50093.525	52308.312	172	51003.850	51048.716
107	50307.990	52307.605	173	51073.720	51007.782
108	50076.934	51428.216	174	50898.196	51223.685
109	50075.237	51338.232	175	50841.775	51210.244
110	50111.005	51337.558	176	50885.636	51276.409
111	50138.829	51340.963	177	50817.777	51310.980
112	50192.798	51355.458	178	50812.178	50780.930
113	50240.471	51422.133	179	50782.274	50724.346
114	50428.755	51321.655	180	50946.218	50678.385
115	50442.567	51331.420	181	50946.953	50654.790
116	50457.449	51270.909	182	51004.225	50679.055
117	50476.051	51284.063	183	51004.925	50656.597
118	50541.632	51421.983	184	50832.207	50460.401
119	50483.765	51418.063	185	50858.638	50408.773
120	50477.710	51507.437	186	50800.368	50378.943
121	50477.094	51535.622	187	50843.465	50294.759
122	50535.578	51511.357	188	50876.725	50254.399
123	50535.282	51542.782	189	50903.881	50176.940
124	50535.828	51565.591	190	50781.837	50268.328
125	50606.591	51564.257	191	50748.740	50352.512
126	50608.476	51664.230	192	50722.391	50404.182
127	50537.335	51665.580	193	50647.036	50186.322
128	50479.735	51645.971	194	50589.036	50186.392
129	50443.827	51762.095	195	50588.872	50049.295
130	50490.907	51795.970	196	50646.872	50049.226
131	50430.539	51878.869	197	50350.997	50049.380
132	50383.459	51845.994	198	50251.453	50074.699
133	50367.097	51871.436	199	50076.425	50074.909
134	50400.660	51936.562	200	50079.725	50249.905
135	50376.464	51284.682	201	50056.606	50349.932
136	50404.846	51233.716	202	51050.685	50687.851
137	50335.567	51184.733	203	51046.376	50750.230
138	50302.083	51232.091	204	51129.211	50769.233
139	50273.401	51047.531	205	51143.521	50706.853
140	50215.717	51041.482	206	51387.024	50626.643
141	50225.887	50944.513	207	51417.734	50665.689
142	50283.570	50950.583	208	51483.445	50580.349
143	50279.469	50858.813	209	51432.735	50541.303
144	50274.605	50835.054	210	51461.809	50455.723
145	50222.555	50869.986	211	51525.809	50455.646
146	50217.891	50846.226	212	51525.553	50242.174
147	50303.859	50740.316	213	51461.549	50239.250
148	50325.833	50860.347	214	51481.480	50181.250
149	50468.598	51117.204	215	51345.590	50181.389
150	50524.743	51147.925	216	51345.660	50239.359
151	50554.144	51081.457	217	51231.179	50319.199
152	50493.644	51080.583	218	51165.725	50368.707
153	50523.618	50973.707	219	51461.321	50048.250
154	50584.118	50984.580	220	51711.553	50241.951
155	50700.023	50767.816	221	51857.042	50291.910
156	50729.927	50824.400	222	51872.114	50303.675
157	50736.214	50821.077	223	51911.493	50253.223
158	50787.734	50793.849	224	51896.420	50241.458
159	50810.676	50828.643	225	51711.476	50177.951
160	50762.255	50880.571	226	51525.476	50178.174
161	50787.331	50923.222	227	51525.321	50048.174
162	50844.409	50912.924	228	50464.184	51125.272
163	50853.581	50963.762	229	50380.413	51079.434
164	50796.503	50974.060	230	50395.389	51020.141
165	50814.108	51032.330	231	50276.038	51022.391
166	50829.600	51068.718	232	50307.072	51158.397



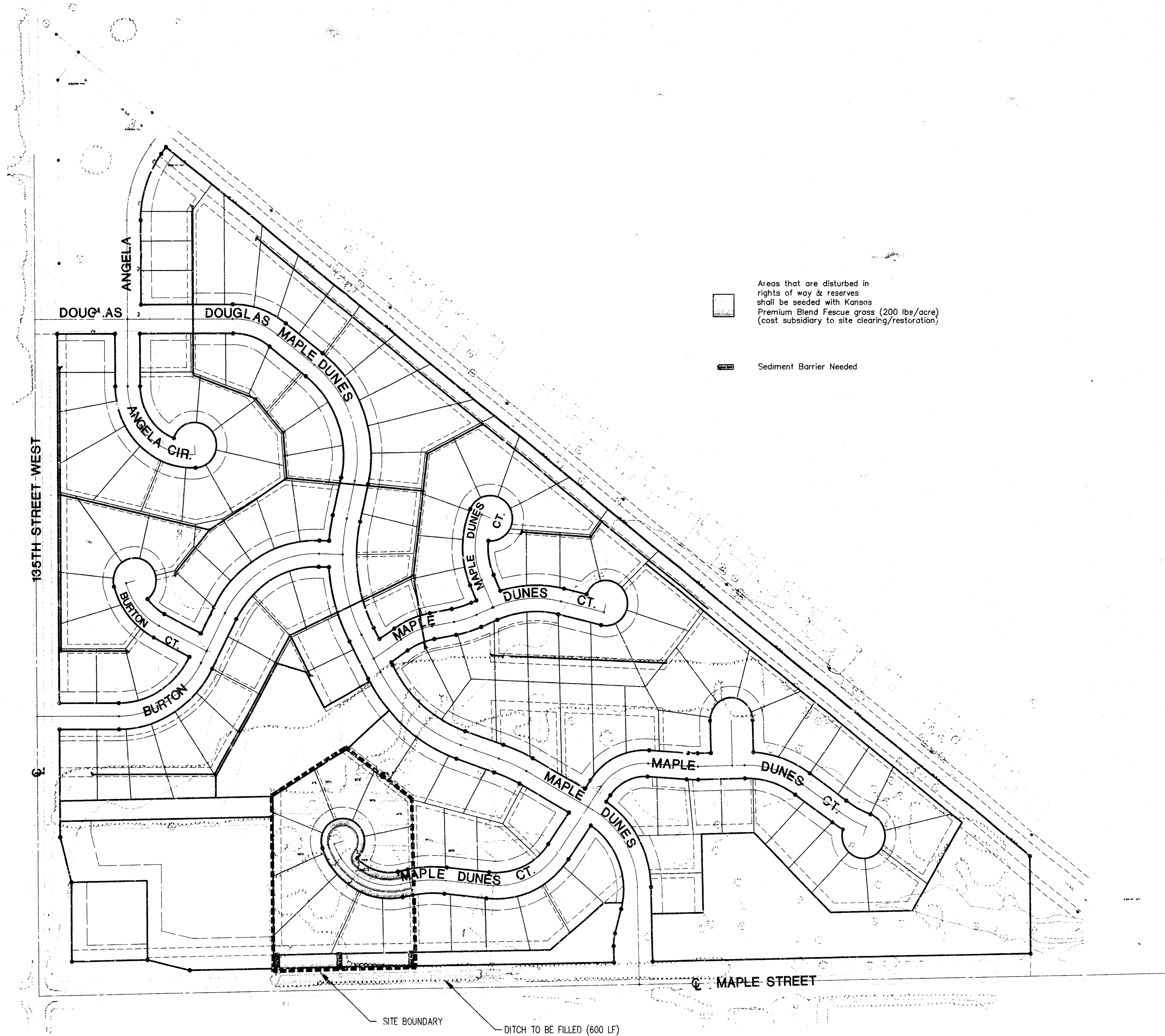
FINAL

Engineer: J. Ubert
 Drawn By: M. Perez / B. Kulla
 P.O. Box No.: 1686A
 Date: February 2000

POE & ASSOCIATES OF KANSAS, INC.
 CONSULTING ENGINEERS
 3401 E. Central, Suite 208 Wichita, KS 67208 • 316/936-1444 • Fax 316/936-1444

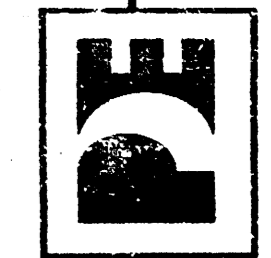
MAPLE DUNES PHASE 3
 STREET IMPROVEMENTS
 COORDINATE POINT LIST
CITY OF WICHITA, KANSAS
 MICHAEL E. LINDBERGH, P.E. - CITY ENGINEER
 PROJECT NO. 472.02(3) OCA NUMBER 765016

7 of 10



FINAL

Engineer: J. Ubert
 Drawn By: M. Perez / B. Kullia
 Proj. Job No.: 1686A
 Date: February 2000



POE & ASSOCIATES OF KANSAS, INC.
 CONSULTING ENGINEERS
 5940 E. Central Ave., Suite 100 • Wichita, KS 67214 • Tel: 316/621-4444

MAPLE DUNES PHASE 3
 STREET IMPROVEMENTS
 STORM WATER POLLUTION PREVENTION PLAN
 CITY OF WICHITA, KANSAS
 MICHAEL E. LINDBERGH, P.E. - CITY ENGINEER
 PROJECT NO. 472-82831 OCA NUMBER 765816

NO.	DATE	BY	REVISION
1			
2			
3			
4			

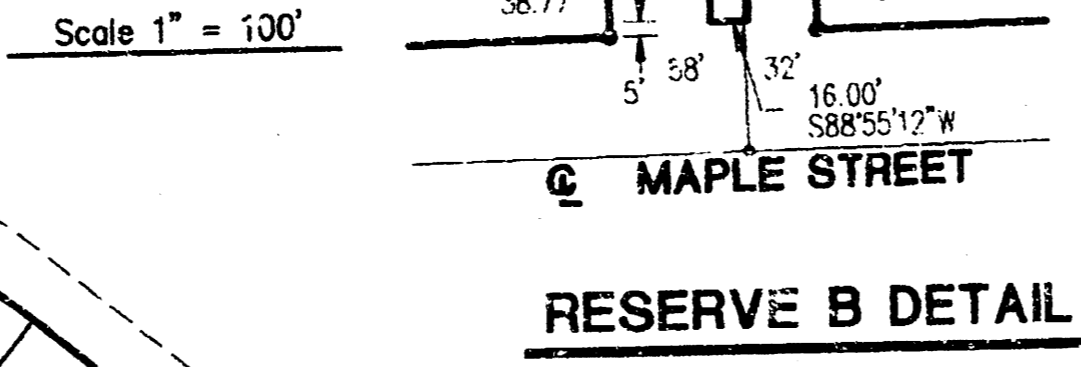
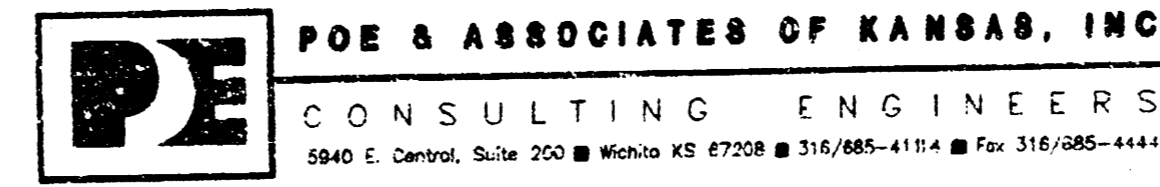


NOTES:
1. Add 100 to elevations shown to get City of Wichita Datum.

<p>FINAL</p> <p>Engineer: J. Ubert Drawn By: M. Perez / B. Kullis Prop. Job No.: 16867 Date: February 2000</p>		<p>PE</p> <p>POE & ASSOCIATES OF KANSAS, INC. CONSULTING ENGINEERS 5901 E. Central Expy. Suite 200 • Wichita, KS 67208 • 316.463-4114 • Fax 316.463-1144</p>		<p>MAPLE DUNES PHASE 3 STREET IMPROVEMENTS LOT 1 THROUGH LOT 68 CITY OF WICHITA, KANSAS MICHAEL E. LINDBERGH, P.E. - CITY ENGINEER PROJECT NO. 472-82831 OCA NUMBER 765516</p>	
No.	Date	By	Approved	Revised	

MAPLE DUNES ADDITION

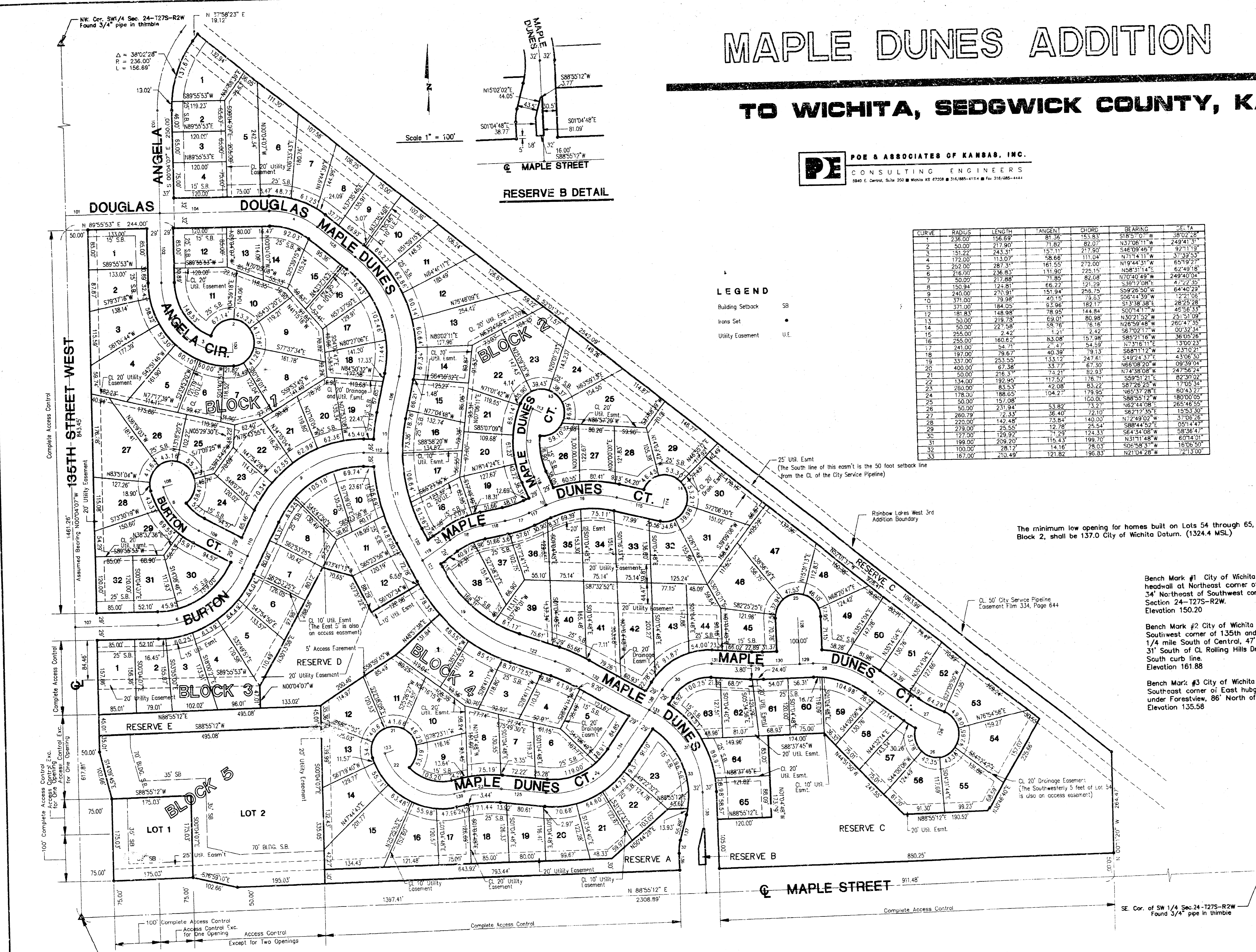
TO WICHITA, SEDGWICK COUNTY, KANSAS



CURVE	RADIUS	CHORD	ANGLE	CHORD BEARING	DELTA
1	236.00	156.67	81.36	S15.83°E	38.02°E
2	50.00	217.90	71.82	S27.06°W	249.41°E
3	151.22	243.31	153.11	S17.50°E	97.11°E
4	172.00	113.07	58.66	N11.04°W	37.33°E
5	252.00	287.31	161.50	N19.44°W	65.19°E
6	216.00	236.83	131.90	N25.15°E	249.00°E
7	50.00	217.89	71.82	S27.06°E	47.22°E
8	150.94	124.81	66.27	N11.90°E	62.49°E
9	240.00	270.91	151.94	S25.75°E	64.40°E
10	371.00	78.98	20.15	S62.13°W	127.02°E
11	371.00	184.05	93.98	S13.38°E	28.25°E
12	181.83	148.98	78.95	N44.84°E	45.56°E
13	50.00	217.78	69.01	N27.15°E	23.50°E
14	50.00	227.58	58.16	N26.59°E	26.47°E
15	255.00	242.1	121.1	S67.02°W	00.32°E
16	255.00	160.62	83.08	N17.98°E	3.00°E
17	141.00	54.71	24.47	S4.49°E	4.50°E
18	180.00	79.67	40.39	S68.11°E	13.00°E
19	337.00	253.55	133.72	S49.24°E	09.99°E
20	400.00	67.38	33.77	N74.30°E	13.14
21	50.00	218.31	74.21	S27.12°E	82.00°E
22	134.00	192.95	117.52	S59.51°E	17.00°E
23	280.00	83.53	42.08	S87.28°E	11.00°E
24	178.00	198.65	104.27	N65.37°E	60.43°E
25	50.00	157.08	100.00	S88.55°E	78.00°E
26	50.00	231.94	53.82	S27.12°E	15.53°E
27	280.00	72.53	36.40	S62.12°E	25.45°E
28	220.00	142.48	73.84	N72.49°E	37.00°E
29	278.00	25.55	12.78	S88.44°E	05.14°E
30	127.00	129.57	71.29	S84.14°E	58.36°E
31	188.00	209.20	115.43	N31.14°E	60.14°E
32	100.00	28.12	14.16	S06.58°E	16.06°E
33	167.00	210.49	121.82	N21.04°E	72.13°E

LEGEND
 Building Setback SB
 Irons Set I
 Utility Easement U.E.

LINE	DIRECTION	DISTANCE
100	S37.74°E	47.00'
101	N88.55°E	222.00'
102	N00.04°W	147.89'
103	N80.04°W	218.00'
104	N89.55°E	245.47'
105	S52.24°E	197.11'
106	S12.55°W	84.95'
107	N89.55°E	187.33'
108	S74.29°W	21.00'
109	S25.57°E	21.57'
110	S27.06°E	54.46'
111	S27.06°E	28.91'
112	S88.17°E	54.00'
113	N66.17°E	21.00'
114	S132.15°E	21.00'
115	N76.38°E	103.56'
116	S23.40°E	85.32'
117	N84.00°E	38.27'
118	S23.48°E	1.68'
119	N56.16°E	76.84'
120	S105.22°E	69.89'
121	S27.12°E	13.14'
122	S70.55°E	9.30'
123	S117.34°E	21.00'
124	S112.90°E	21.00'
125	S84.00°E	9.30'
126	S190.40°E	21.00'
127	N54.74°E	14.96'
128	S01.04°E	99.52'
129	N88.17°E	79.10'
130	N88.17°E	81.22'
131	N88.17°E	89.58'
132	N67.18°E	165.00'
133	N85.51°E	120.40'
134	N85.51°E	120.40'
135	S01.04°E	213.57'
136	S01.04°E	16.36'
137	N155.02°E	55.88'
138	N155.02°E	51.63'
139	N18.03°E	24.21'



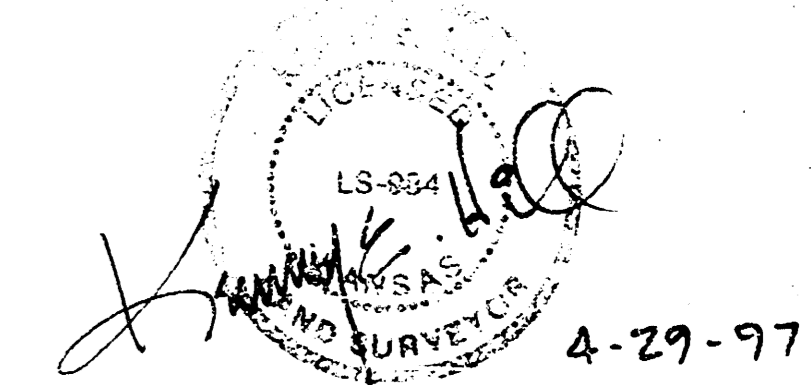
The minimum low opening for homes built on Lots 54 through 65, Block 2, shall be 137.0 City of Wichita Datum. (1324.4 MSL)

Bench Mark #1 City of Wichita std. disk on headwall at Northeast corner of 135th & Maple, 34' Northeast of Southwest corner of Section 24-T275-R2W. Elevation 150.20

Bench Mark #2 City of Wichita std. disk at Southwest corner of 135th and Rolling Hills Drive, 1/4 mile South of Central, 47' East of CL 135th, 31' South of CL Rolling Hills Drive, 14' South of South curb line. Elevation 161.88

Bench Mark #3 City of Wichita std. disk on Southeast corner of East hubguard of RCB under Forestview, 86' North of CL Maple. Elevation 135.58

Scale 1" = 100'



Sheet No. 1 of 2

14-08-041

G:\APPS\UCAD\PROJECTS\14-08-041.dwg Thu Feb 17 17:21:30 2000 Bernard Kullib - POE & ASSOCIATES OF KANSAS, INC.