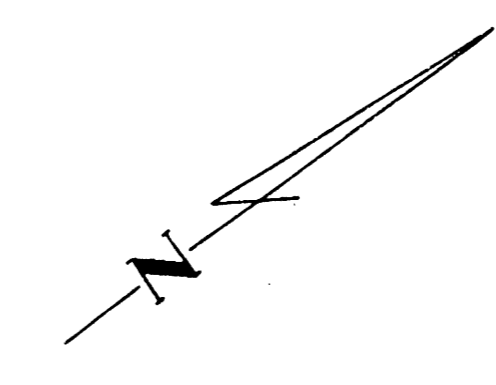
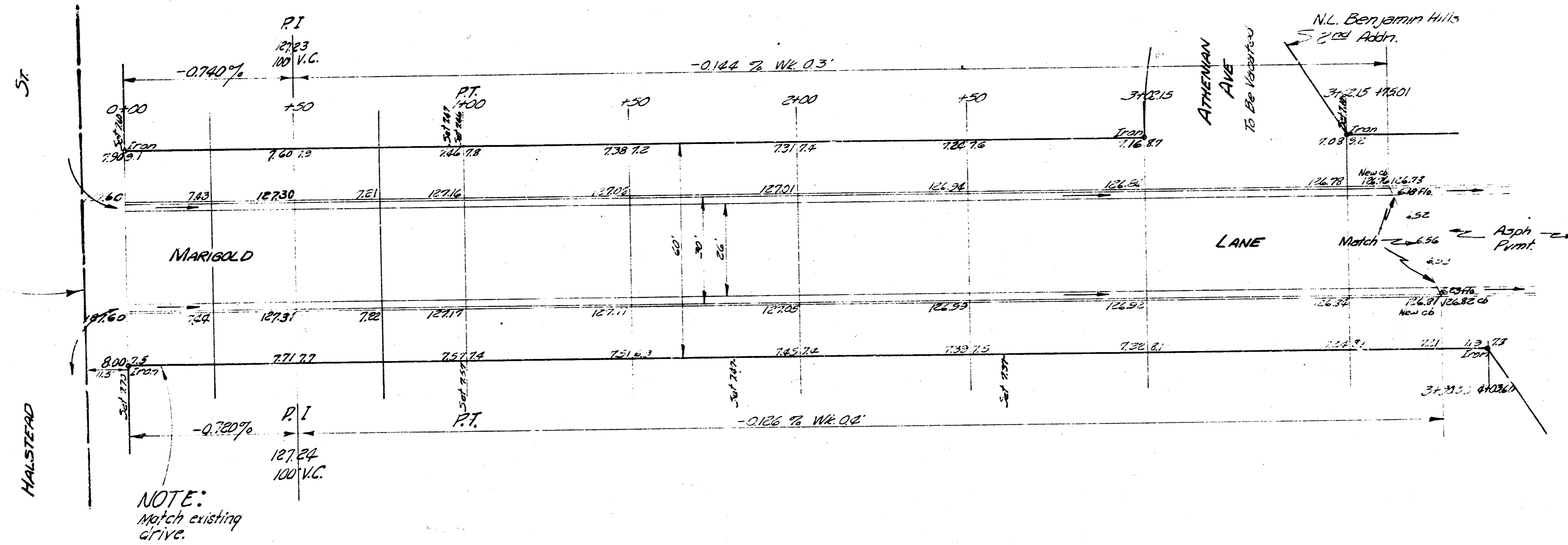


B.M. 13194 N.E. cor. conc. water box, approx. 150' S of N.L. Benjamin Hills 2nd Addn on W.S. Halstead
 Stationing on W. R.



NOTE: TO CONTRACTOR
 Use extreme caution in vicinity of 48 inch water main.
 No heavy equipment to be used in this area.



NOTE:
 Match existing drive.

| Station | City | Fill | City |
|---------|--------------|------|------|
| 756.3 | 2.74 | 0 | 0 |
| 756.3 | 130.2 | 0 | 0 |
| 756.6 | 13.0 | | |
| 757.0 | 123.3 Cu Yds | | |



MARIGOLD
 N.L. HALSTEAD TO N.L. BENJAMIN HILLS 2ND ADDN
 26-2-30 A.C.
 CITY OF WICHITA, KANSAS
 B. E. SMITH CITY ENGINEER
 AUG. 1935 Proj. No. City-333