

B.M. 9683 N.M. COR. Bottom Step - Paroh House #2548 IDA AVENUE.  
 B.M. 9718 S.E. COR. CORC Apt # 2537 N.M. COR. ELLIS & MARION.  
 BASE LINE - CENTER LINE MARION ROAD



EXCAVATION

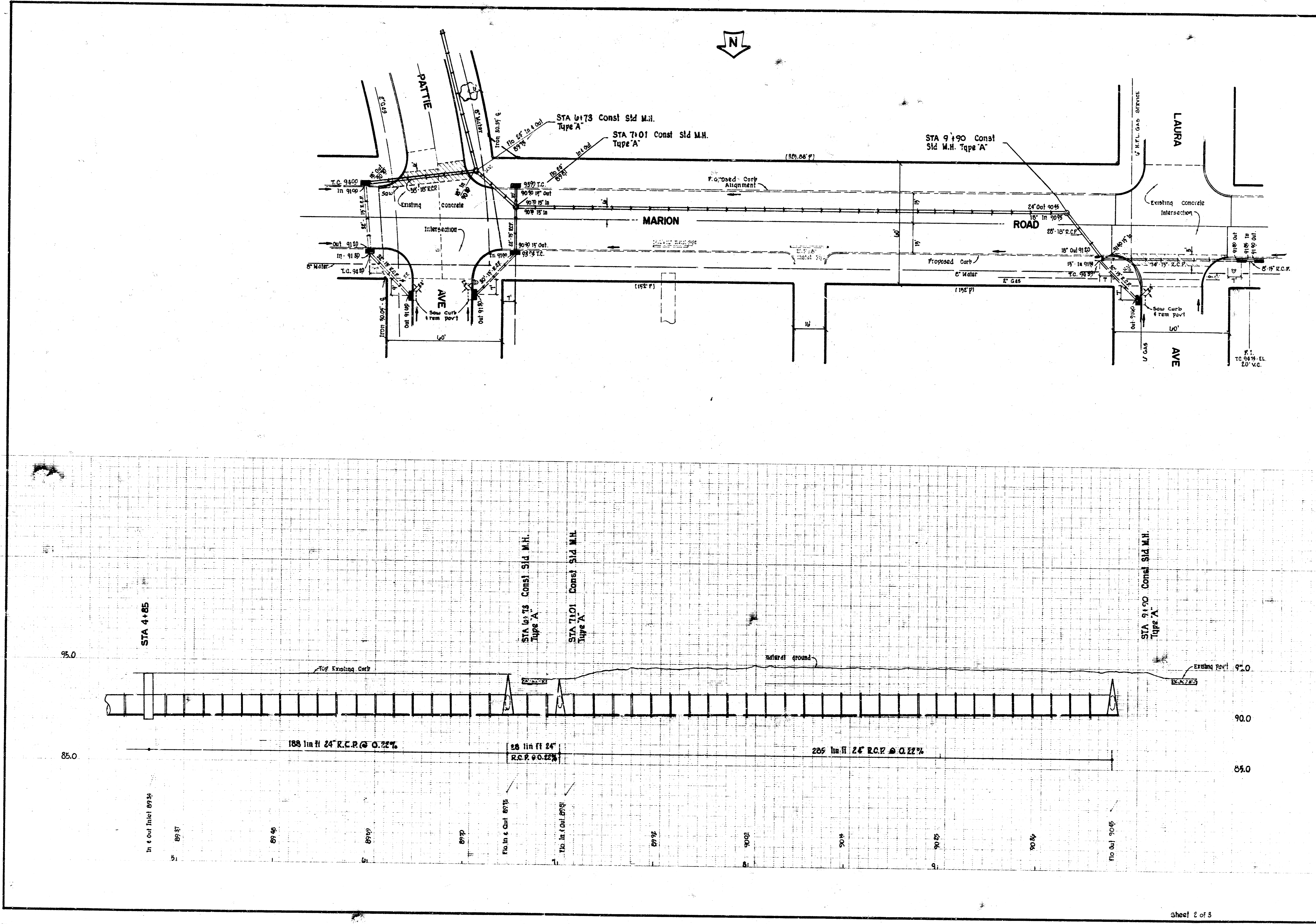
PROPERTY	CITY
787.7 Cu Yds	45.0 Cu Yds
12% 78.8	12% 4.5
844.5 Cu Yds	49.5 Cu Yds
S.G.M. 500.9 Cu Yds	S.G.M. 84.0 Cu Yds

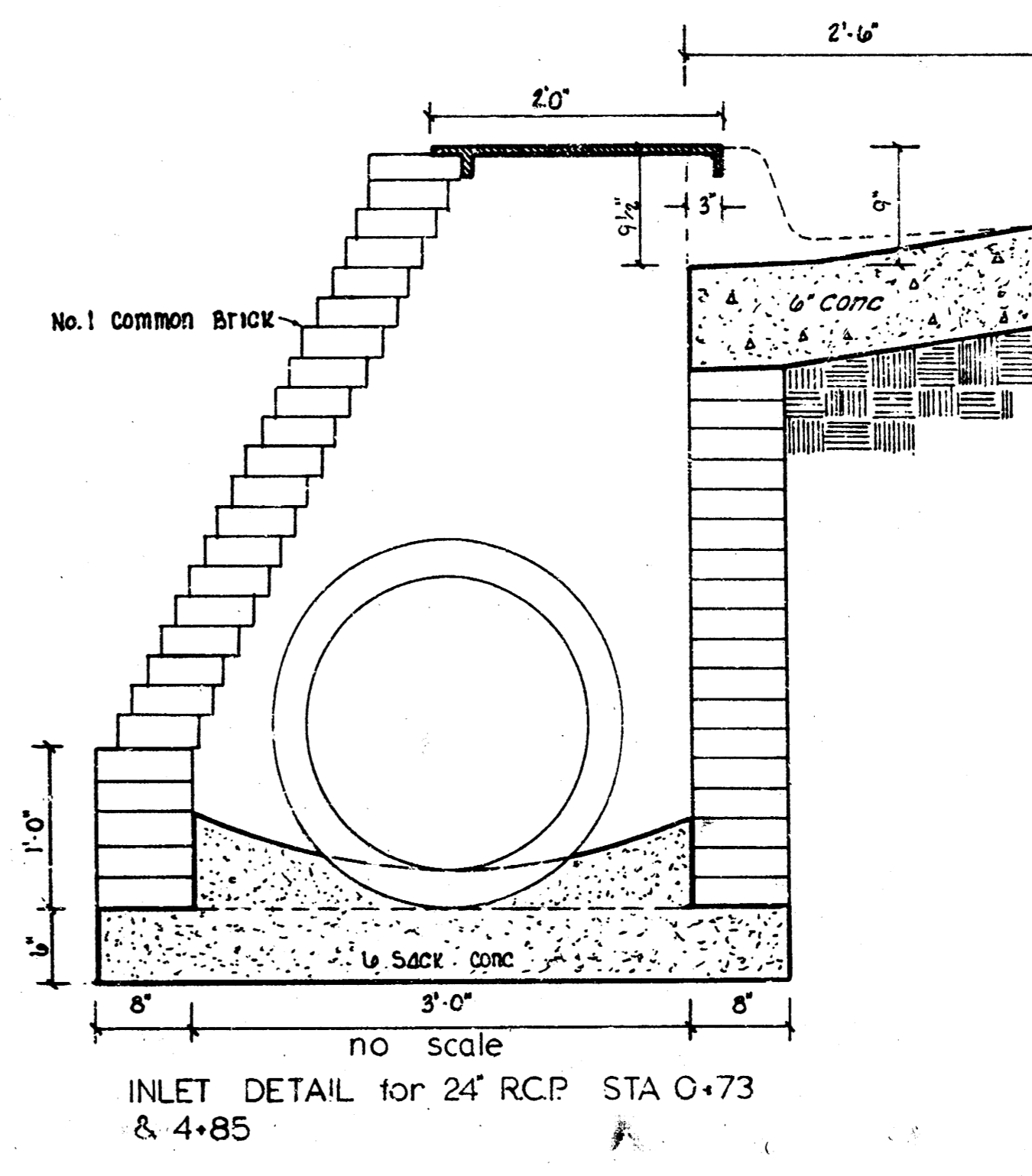
\*SIDEWALK\*  
 Grade Parking and Clear P/W for proposed  
 Sidewalk. Compact 1 1/2" walk area.  
 Walk to be constructed by "DARKS"

MARION ROAD  
 E.L. IDA AVE to W.L. PATTIE AVE.  
 CITY OF WICHITA, KANSAS  
 30.0' CONCRETE & CURB  
 B. E. SMITH CITY ENGINEER  
 DATE NOV. 1970, PROJ. NO. C19-08

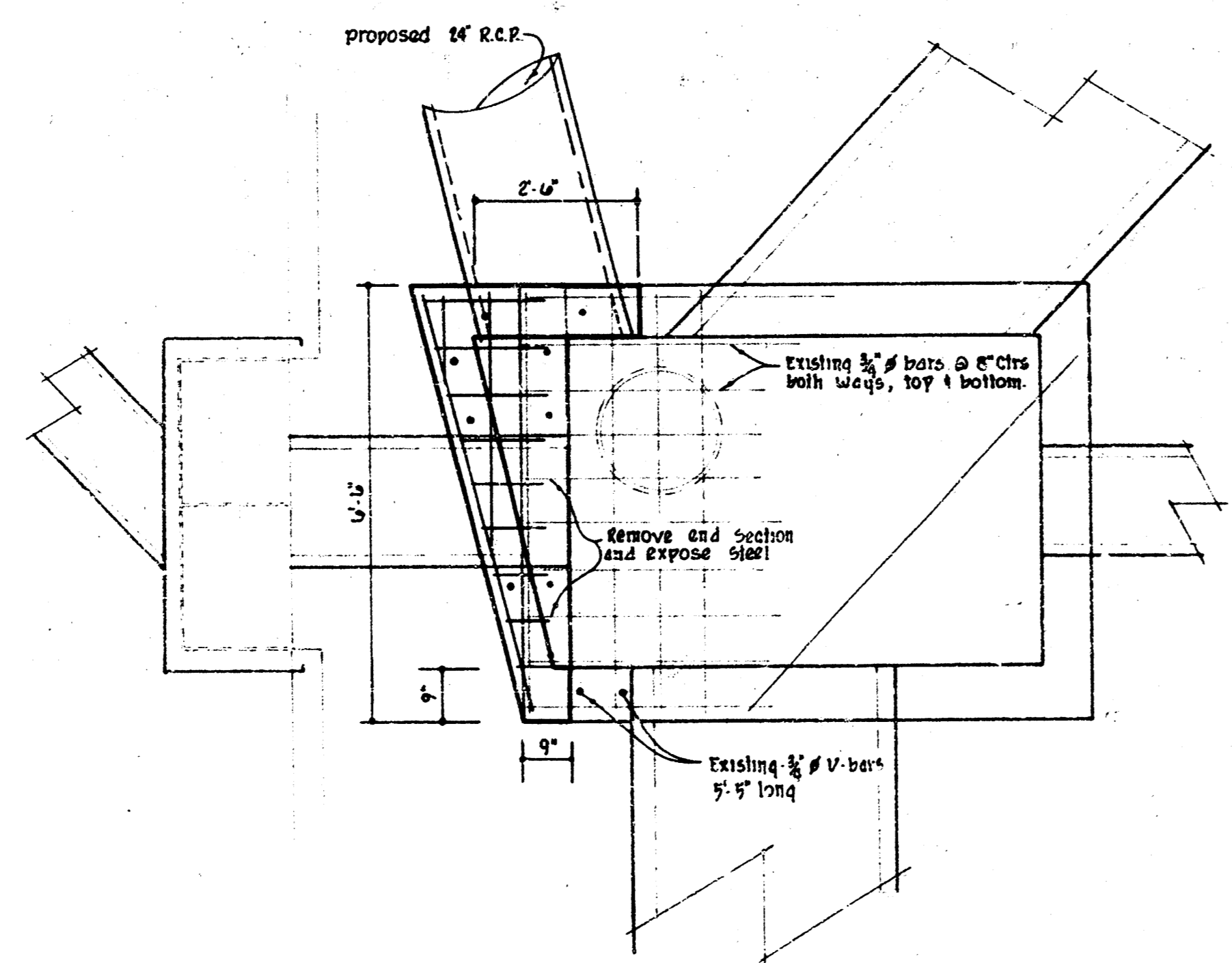
Surveying Station  
 20-22-40  
 11-11-70  
 B. E. SMITH  
 City Engineer

11-2-70 T.H.L. 642



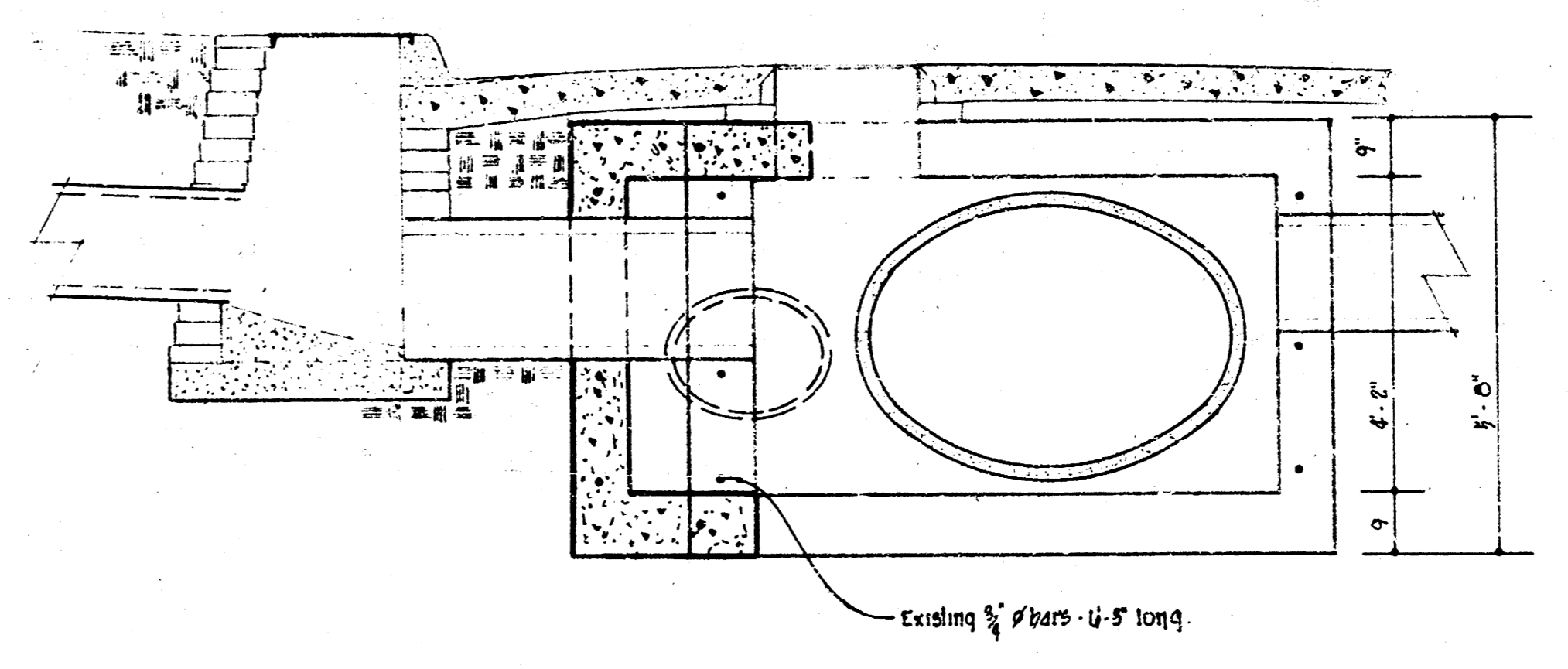


no scale  
INLET DETAIL for 24" R.C.P. STA O+73  
& 4+85



PLAN VIEW

EXISTING REIN- CONCRETE MANHOLE  
STA O+00



ELEVATION