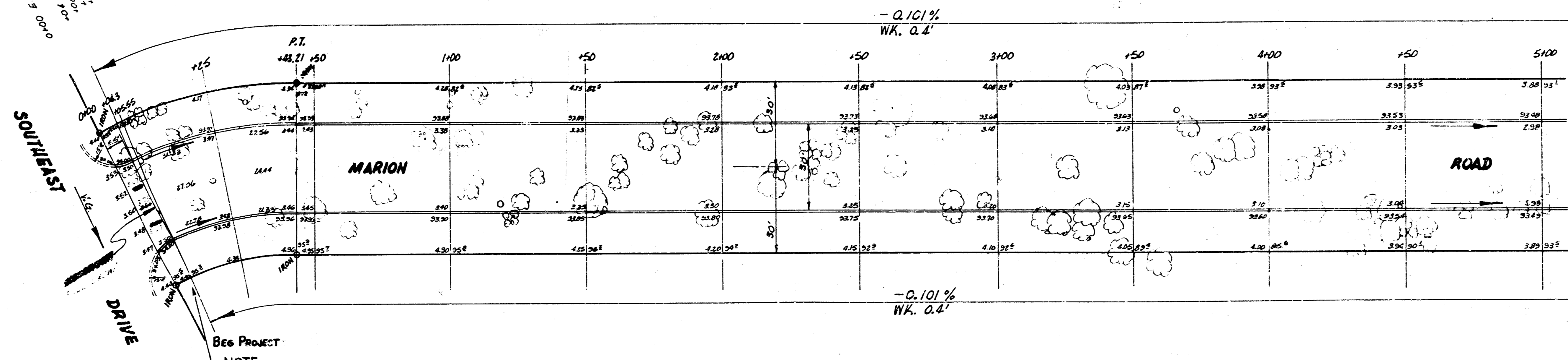


B.M.#1 38.67' on Top of Ctr. Outfall Str. 30'S. & 65' West of N.W. Cor. Jennings Add.  
 B.M.#2 193.88 Step Bench E.S. P.Pole 50'W. W.L. Minnesota & 140' So. Marion Rd.

Chaining East on S. 12

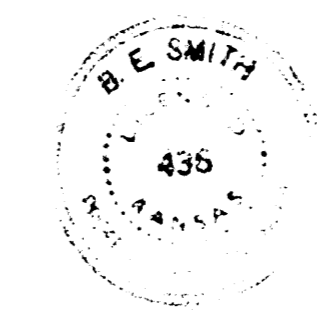
- 123 6" Willow 55' L.A.
- 124 6" Willow 55' L.A.
- 125 6" Willow 55' L.A.
- 126 6" Willow 55' L.A.
- 127 6" Willow 55' L.A.
- 128 6" Willow 55' L.A.
- 129 6" Willow 55' L.A.
- 130 6" Willow 55' L.A.
- 131 6" Willow 55' L.A.
- 132 6" Willow 55' L.A.
- 133 6" Willow 55' L.A.
- 134 6" Willow 55' L.A.
- 135 6" Willow 55' L.A.
- 136 6" Willow 55' L.A.
- 137 6" Willow 55' L.A.
- 138 6" Willow 55' L.A.
- 139 6" Willow 55' L.A.
- 140 6" Willow 55' L.A.
- 141 6" Willow 55' L.A.
- 142 6" Willow 55' L.A.
- 143 6" Willow 55' L.A.
- 144 6" Willow 55' L.A.
- 145 6" Willow 55' L.A.
- 146 6" Willow 55' L.A.
- 147 6" Willow 55' L.A.
- 148 6" Willow 55' L.A.
- 149 6" Willow 55' L.A.
- 150 6" Willow 55' L.A.
- 151 6" Willow 55' L.A.
- 152 6" Willow 55' L.A.
- 153 6" Willow 55' L.A.
- 154 6" Willow 55' L.A.
- 155 6" Willow 55' L.A.
- 156 6" Willow 55' L.A.
- 157 6" Willow 55' L.A.
- 158 6" Willow 55' L.A.
- 159 6" Willow 55' L.A.
- 160 6" Willow 55' L.A.
- 161 6" Willow 55' L.A.
- 162 6" Willow 55' L.A.
- 163 6" Willow 55' L.A.
- 164 6" Willow 55' L.A.
- 165 6" Willow 55' L.A.
- 166 6" Willow 55' L.A.
- 167 6" Willow 55' L.A.
- 168 6" Willow 55' L.A.
- 169 6" Willow 55' L.A.
- 170 6" Willow 55' L.A.
- 171 6" Willow 55' L.A.
- 172 6" Willow 55' L.A.
- 173 6" Willow 55' L.A.
- 174 6" Willow 55' L.A.
- 175 6" Willow 55' L.A.
- 176 6" Willow 55' L.A.
- 177 6" Willow 55' L.A.
- 178 6" Willow 55' L.A.
- 179 6" Willow 55' L.A.
- 180 6" Willow 55' L.A.
- 181 6" Willow 55' L.A.
- 182 6" Willow 55' L.A.
- 183 6" Willow 55' L.A.
- 184 6" Willow 55' L.A.
- 185 6" Willow 55' L.A.
- 186 6" Willow 55' L.A.
- 187 6" Willow 55' L.A.
- 188 6" Willow 55' L.A.
- 189 6" Willow 55' L.A.
- 190 6" Willow 55' L.A.
- 191 6" Willow 55' L.A.
- 192 6" Willow 55' L.A.
- 193 6" Willow 55' L.A.
- 194 6" Willow 55' L.A.
- 195 6" Willow 55' L.A.
- 196 6" Willow 55' L.A.
- 197 6" Willow 55' L.A.
- 198 6" Willow 55' L.A.
- 199 6" Willow 55' L.A.
- 200 6" Willow 55' L.A.



NOTE  
 START CONSTRUCTION ON THIS PROJECT AT STA 0+00.55.  
 STA 0+00 TO STA 0+00.55 TO BE BUILT WITH RETURN  
 OF SOUTHEAST DRIVE PROJ. NO. C13-160

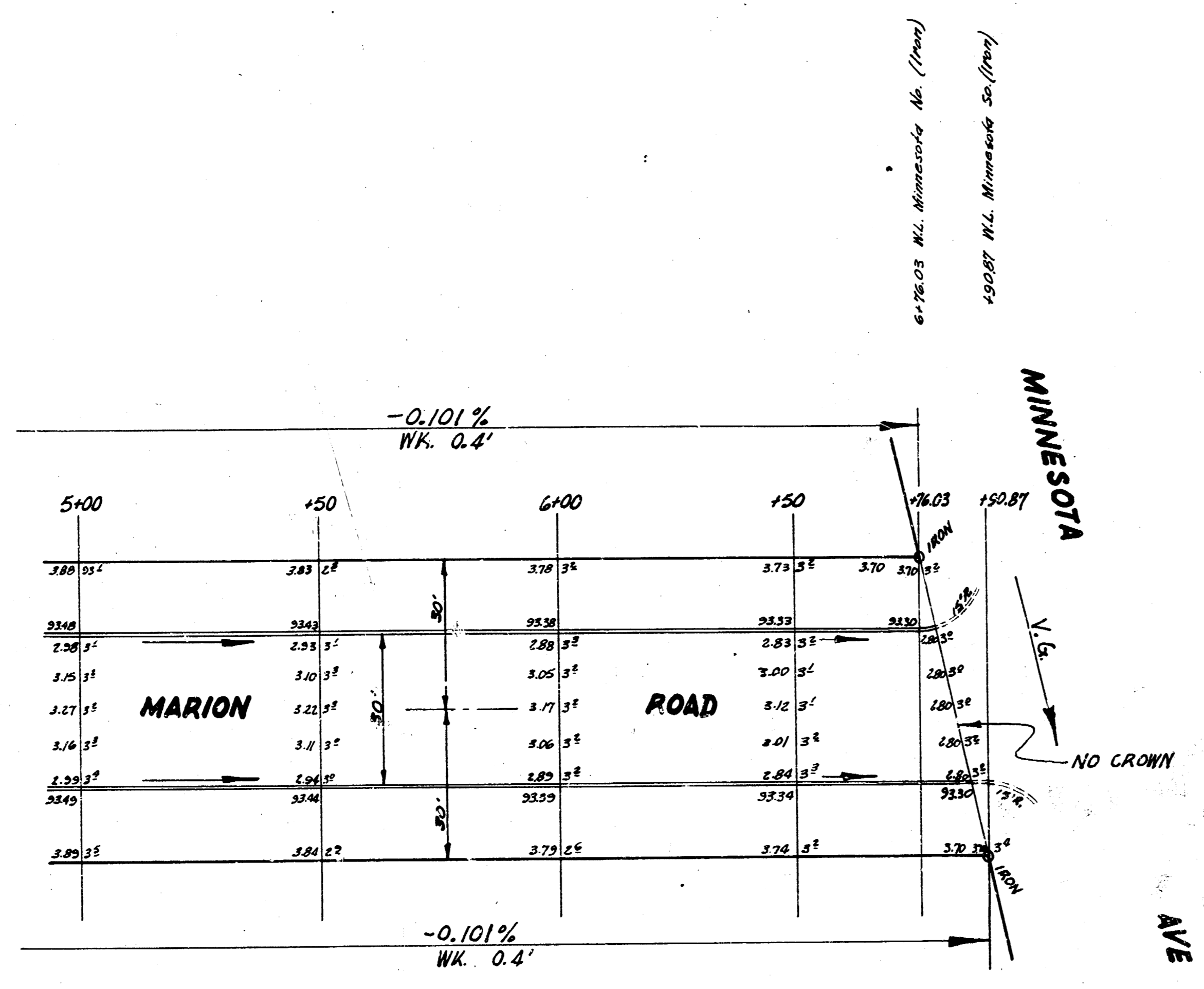
Curve Data From Sta. 0+00 To Sta. 0+45.21	Stationing on S. 12	R = 87.66	Δ = 28°14'30"
Chord Length	Chord Length	Defl. &	Total Defl.
6' Offset S. Ch.	6' Offset N. Ch.		
0+00			
7+04.9	21.6	6.79	124.14°
11+25	51.25	35.48	174°51'
17+42.21	20.04	28.76	57°57'05"

TOTAL ELEVATION  
 P.B.S. 3661.9 Cu.Yd.  
 10% 350.4  
 3555.3 Cu.Yd.



MARION ROAD  
 E.L. SOUTHEAST DRIVE - MINNESOTA AVE.  
 30' CONC. & C.B.  
 CITY OF WICHITA, KANS.  
 B.E. SMITH CITY ENGINEER  
 JULY, 1954 PROJ. NO. C13-157

STATION  
PROP. 111  
13.12.04C (1/16/12)



MARION ROAD

