

Book 54

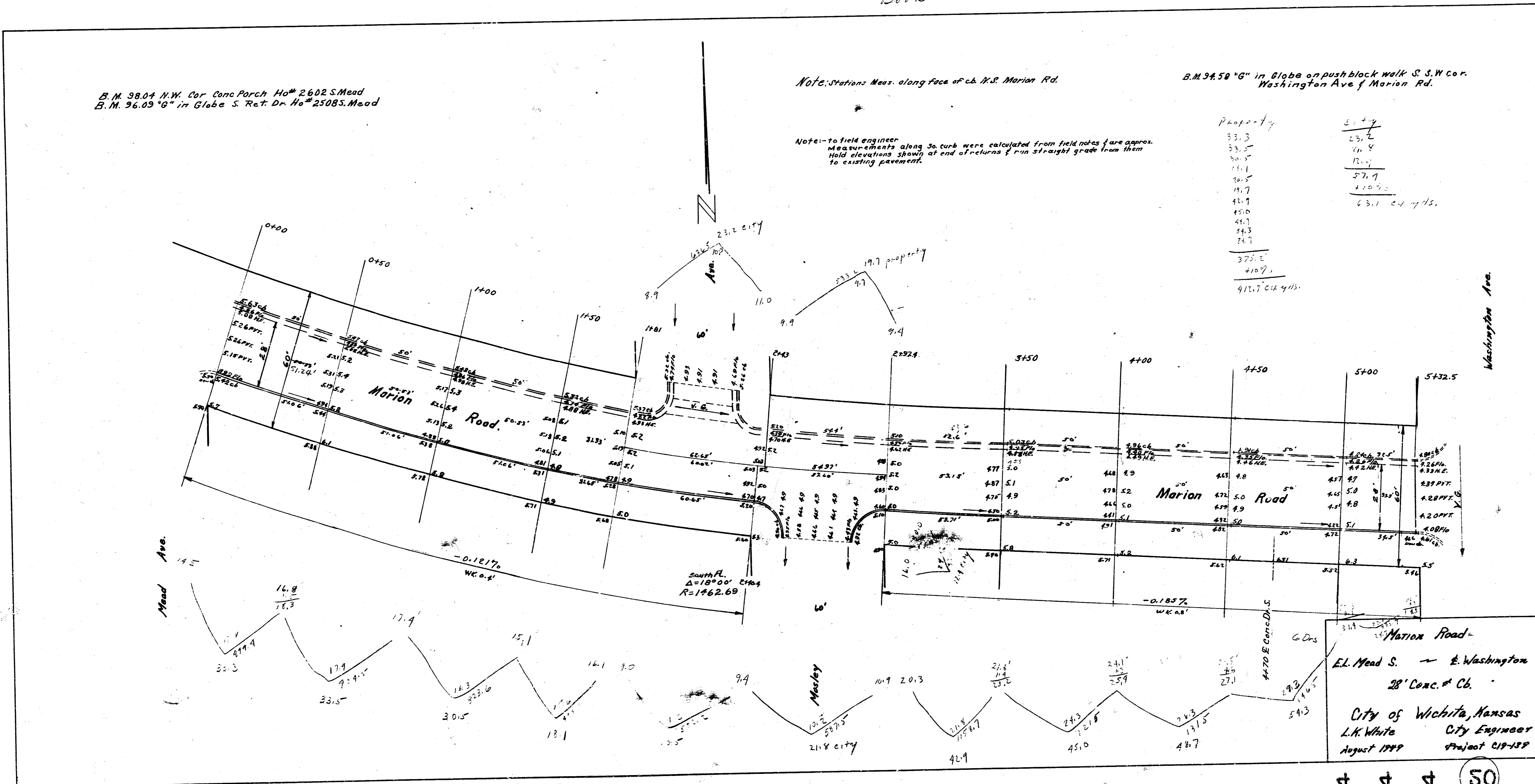
B.M. 98.04 N.W. Cor. Conc. Porch Ho# 2602 S. Mead  
 B.M. 96.09 'G' in Globe S. Ret. Dr. Ho# 2508 S. Mead

Note: Stations Meas. along face of ch. N.S. Marion Rd.

B.M. 98.50 'G' in Globe on push block walk S. S.W. cor. Washington Ave & Marion Rd.

Note: to field engineer  
 Measurements along 30' curb were calculated from field notes & are approx.  
 Hold elevations shown at end of returns & run straight grade from them  
 to existing pavement.

Property	Elev.
33.3	25.2
33.5	41.8
30.5	18.7
17.1	57.7
30.5	410.9
43.7	
45.0	
45.1	
44.3	
34.7	
375.2	
410.9	
412.7	64.945



Marion Road -  
 EL Mead S. - E. Washington  
 28' Conc. & Cb.  
 City of Wichita, Kansas  
 L.K. White City Engineer  
 August 1989 Project C18-189