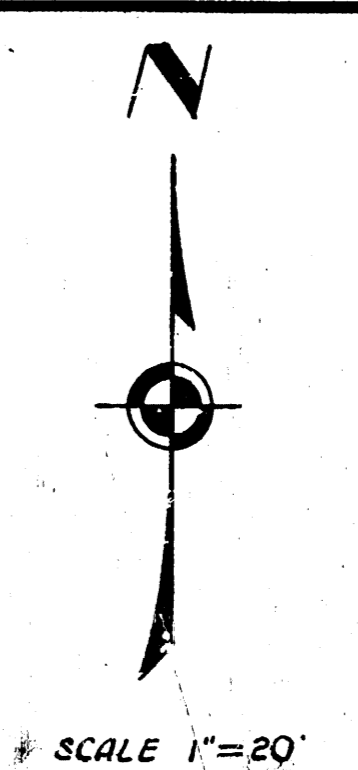
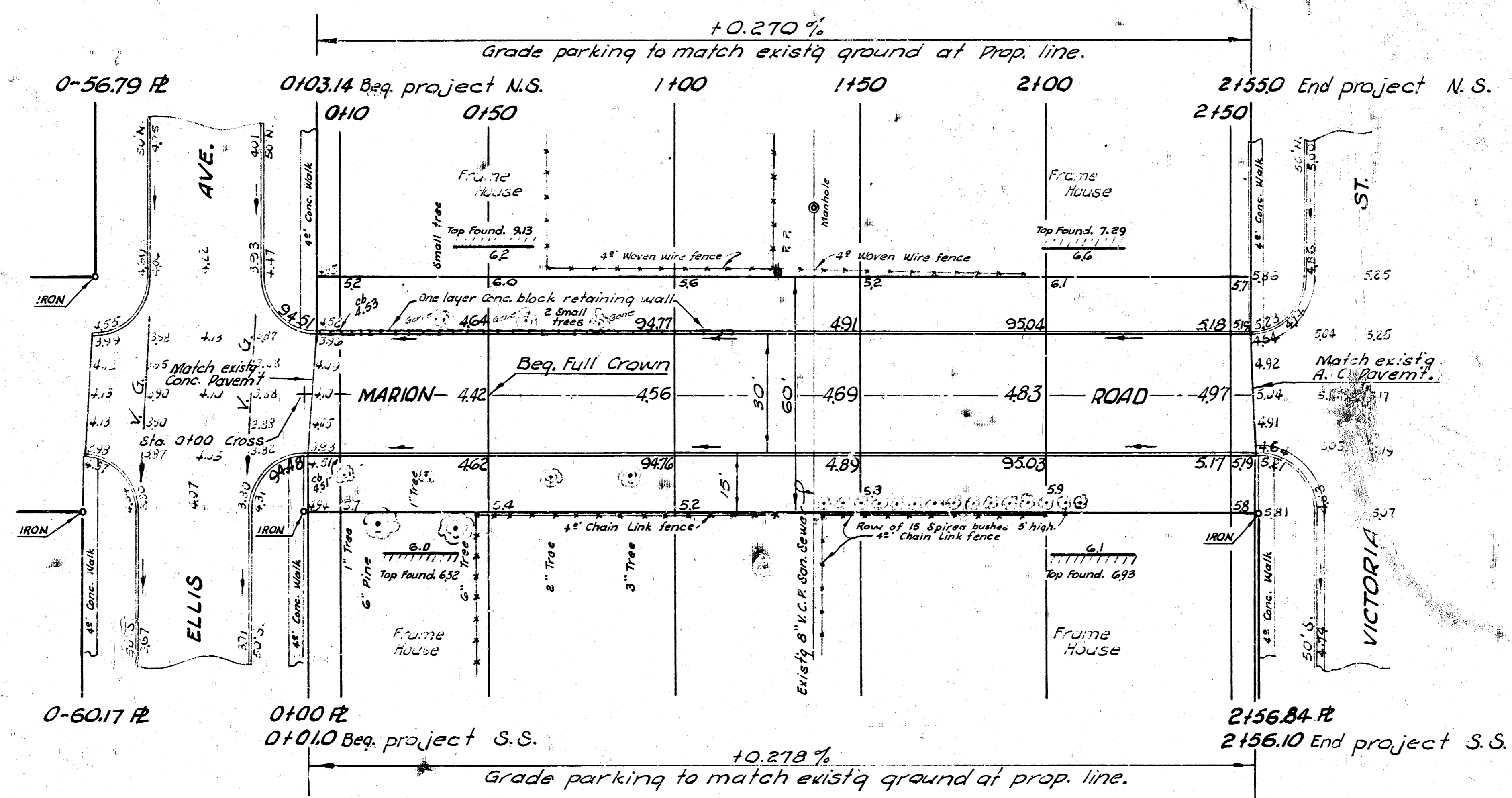
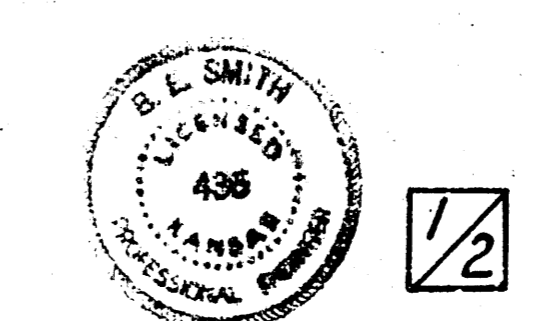
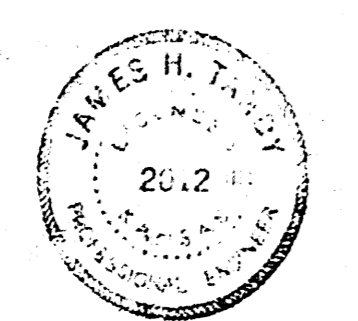


B. M. 971.5 S. E. cor. conc. Porch Brick Apartment # 2557 on N.W. cor. Ellis & Marion Rd.
 B. M. 9369 "G" in Globe E. S. Int. of N.E. cor. Victoria & Marion Rd.
 Baseline on E. Marion Rd.



Excavation
 PROP.
 155.8
 +10% 13.6
 171.4 Cu. yds.



MARION ROAD
 EL ELLIS TO WL VICTORIA
 30' CONC. & CB.
 CITY OF WICHITA, KANSAS
 B. E. SMITH CITY ENGINEER
 MAY 1961, PROJ. NO. C11-2