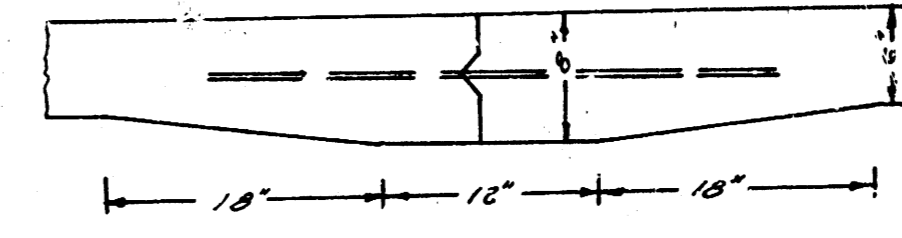
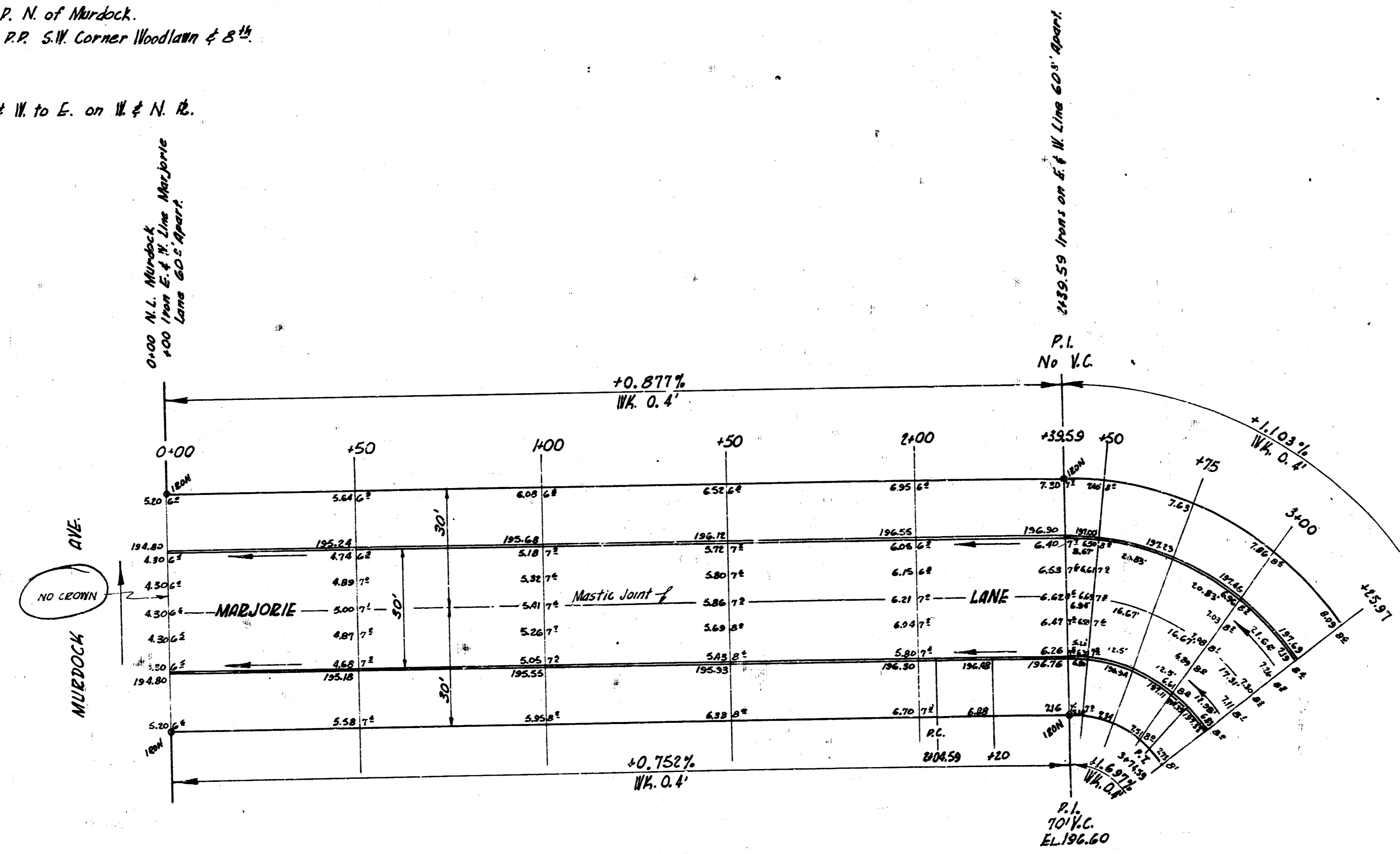
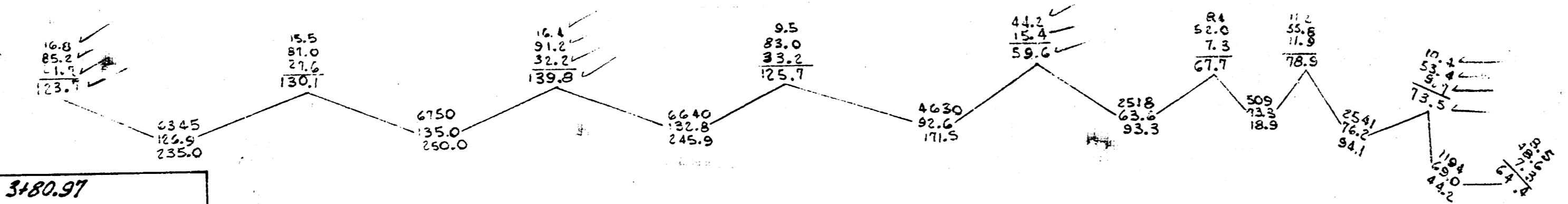


B.M. 198.71 S.E. Cor. Po. South Side Stables.
 B.M. 198.18 Spike in W. Face R.P. N. of Murock.
 B.M. 201.37 R.R. Spike W. Face R.R. S.W. Corner Woodlawn & 8th.

Chaining From S. to N. & W. to E. on W. & N. R.



Use 1/2" # bars, 3' long on 2'-6" centers
 DETAIL OF MASTIC JOINT



DATA FOR CURVE BET. STA. 2+39.59 & STA. 3+80.97
 STA. ON W. & N. R. $\theta = 90^\circ$ & $R = 100'$

| STA. | ARC LENGTH | CHORD LENGTH | CHORD LENGTH ON W. & N. R. | DEFLECTION ANGLE | TOTAL ANGLE |
|---------|------------|--------------|----------------------------|------------------|-------------|
| 2+39.59 | 10.41 | 11.09 | 9.43 | 2° 27' 4.51" | 3° 18' 49" |
| 2+75 | 25.00 | 26.58 | 21.90 | 6° 57' 28" | 11° 16' 17" |
| 3+00 | 25.00 | 26.58 | 21.90 | 6° 57' 28" | 18° 13' 45" |
| 3+25.97 | 25.97 | 27.61 | 21.74 | 6° 57' 53" | 27° 29' 43" |
| 3+53 | 24.03 | 25.56 | 21.03 | 6° 57' 28" | 35° 08' 47" |
| 3+80.97 | 30.97 | 32.87 | 27.05 | 9° 57' 28" | 45° 00' 00" |

NOTE:
 CORRECTIONS OF OFFSET LENGTH.
 MADE JULY 16, 1954

TOTAL EXCAV. CITY
 Prop. 1152.9 Cu. Yd.
 10% 115.3 Cu. Yd.
 1268.2 Cu. Yd.



MARJORIE LANE
 N.L. MURDOCK - W.L. LOT 22 BLK. G COURTLAND ADD.
 30' CONC. & CB.
 CITY OF WICHITA, KANS.
 B.E. SMITH CITY ENGINEER
 APRIL, 1954 PROJ. NO. C14-63

Survey Kansas
 Plate 22
 1954