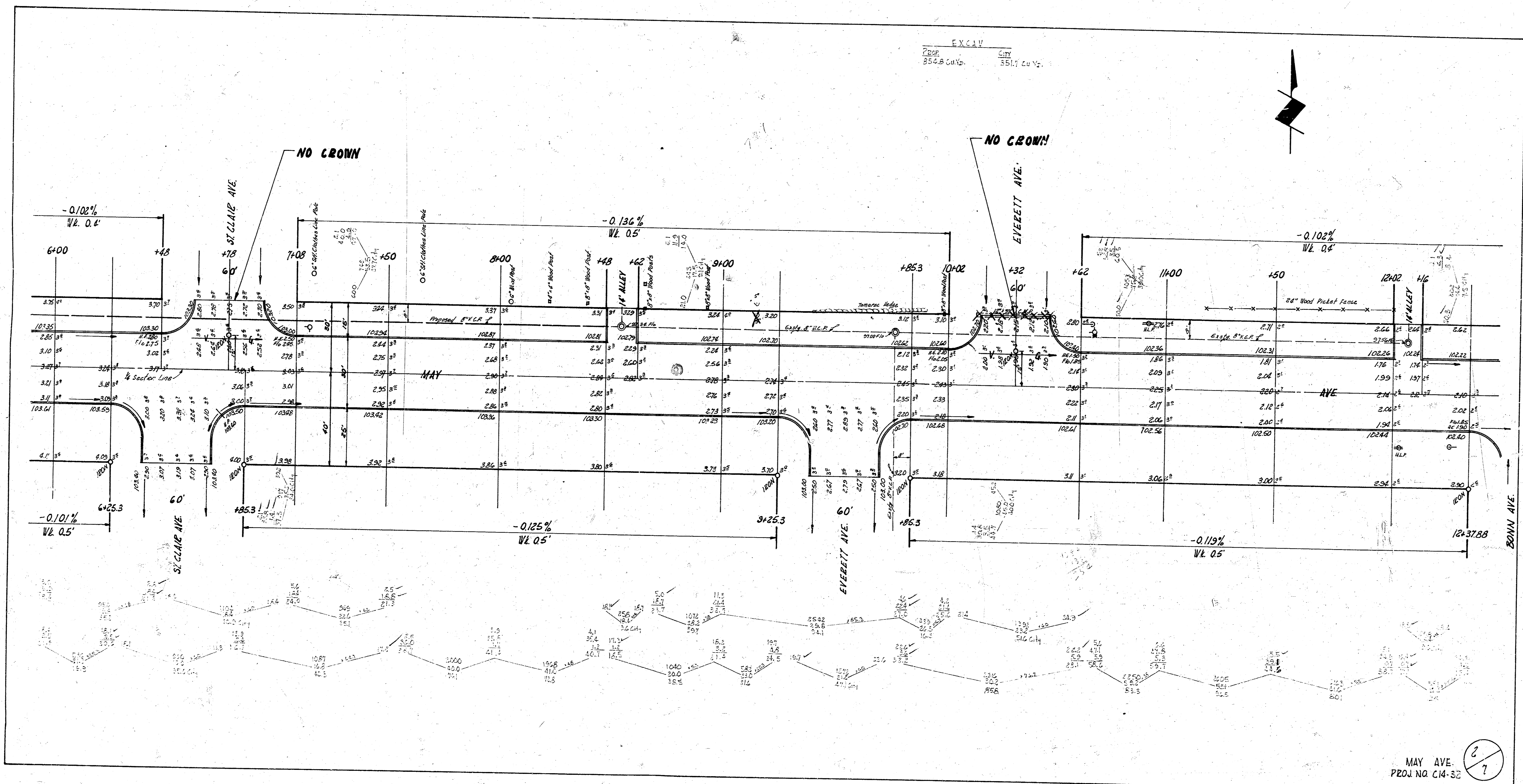
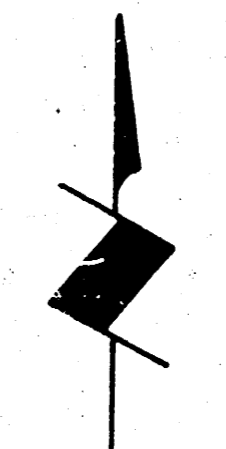
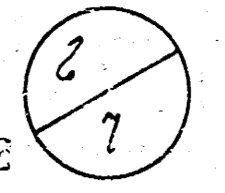




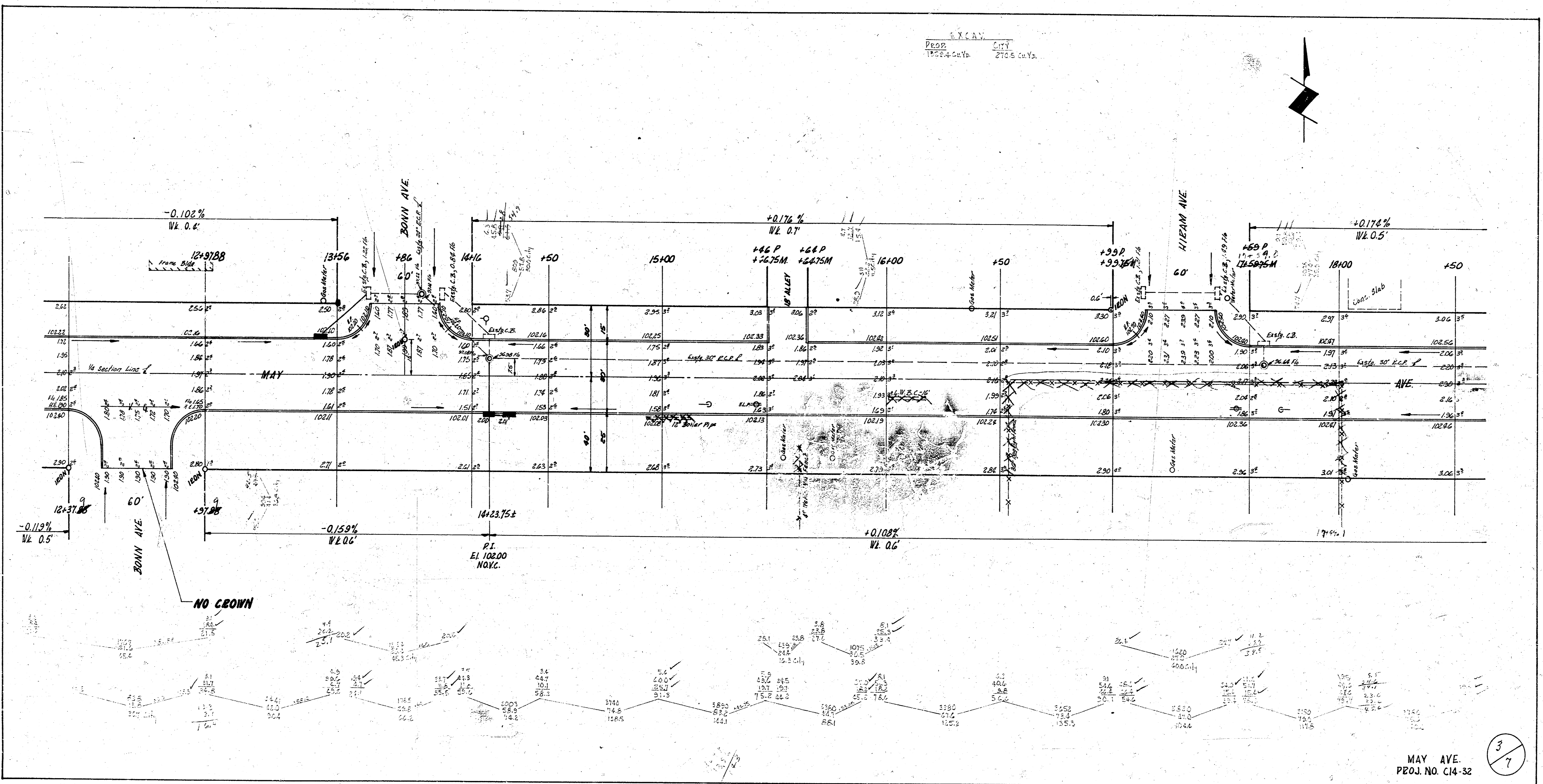
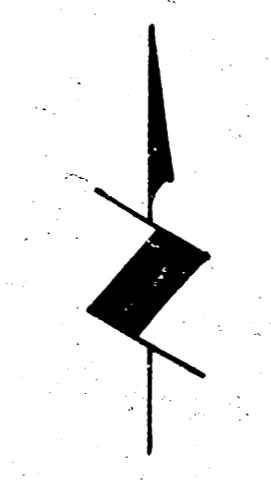
EXCAV  
CUB. YDS. 554.8  
Cu Yds. 551.7



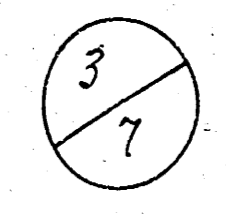
MAY AVE.  
PROJ. NO. C14-32



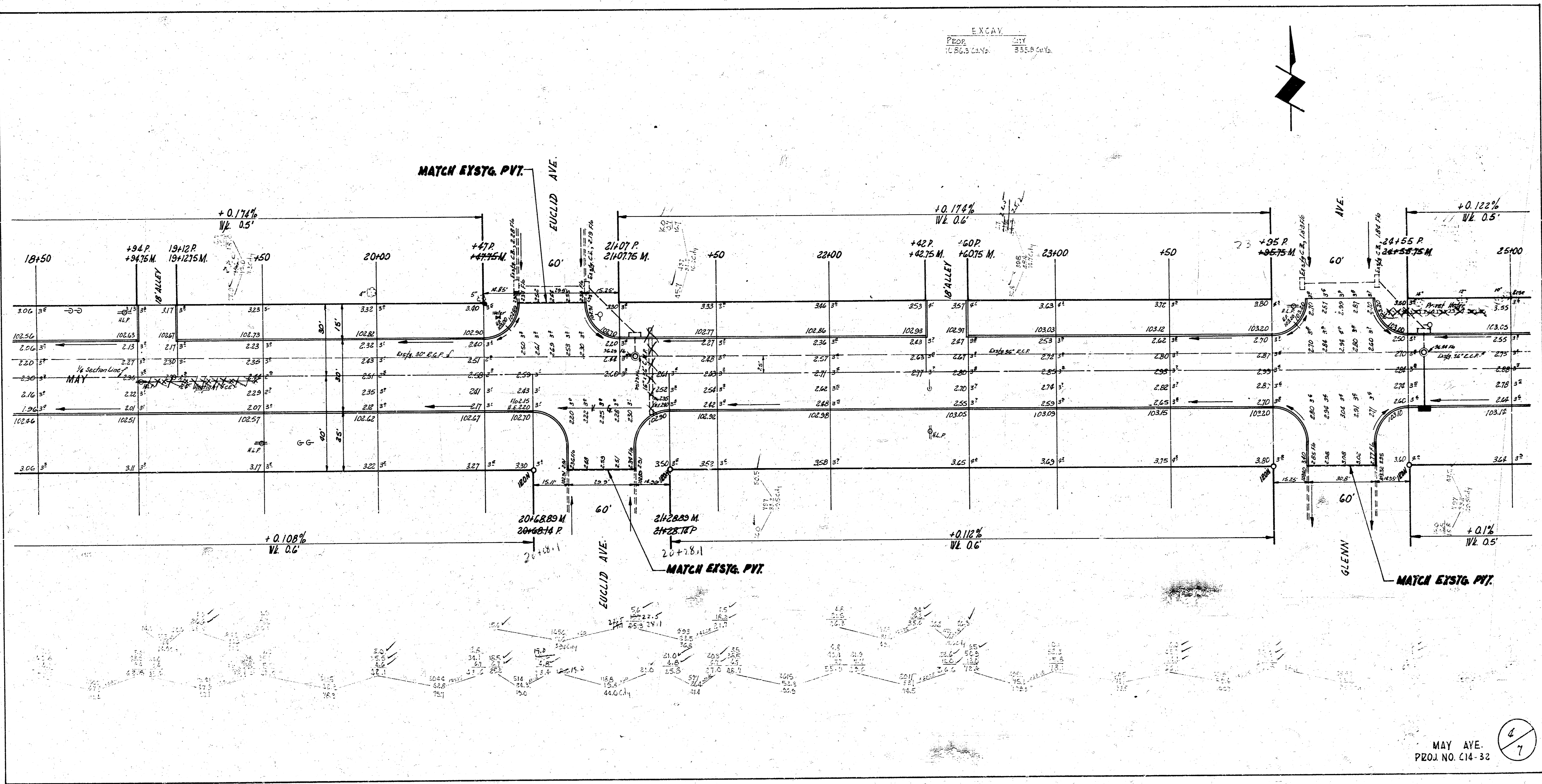
S. K. C. A. N.  
 PROP. CITY  
 1825 4th St. 2705 5th St.



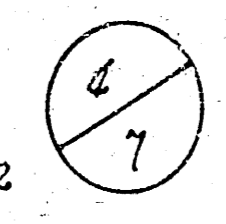
MAY AVE.  
 PROJ. NO. C14-32



EXCAV  
PROP CITY  
1/16/53 LANS 351.85/1

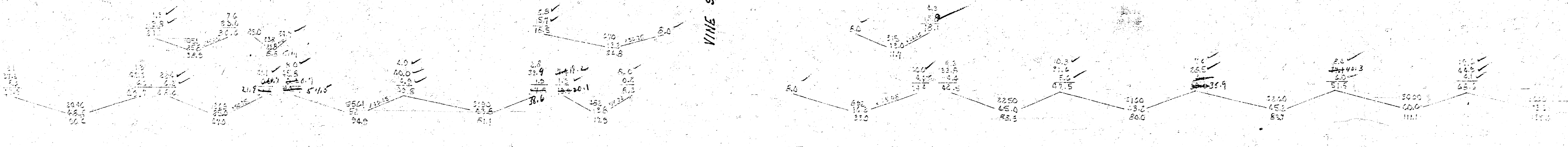
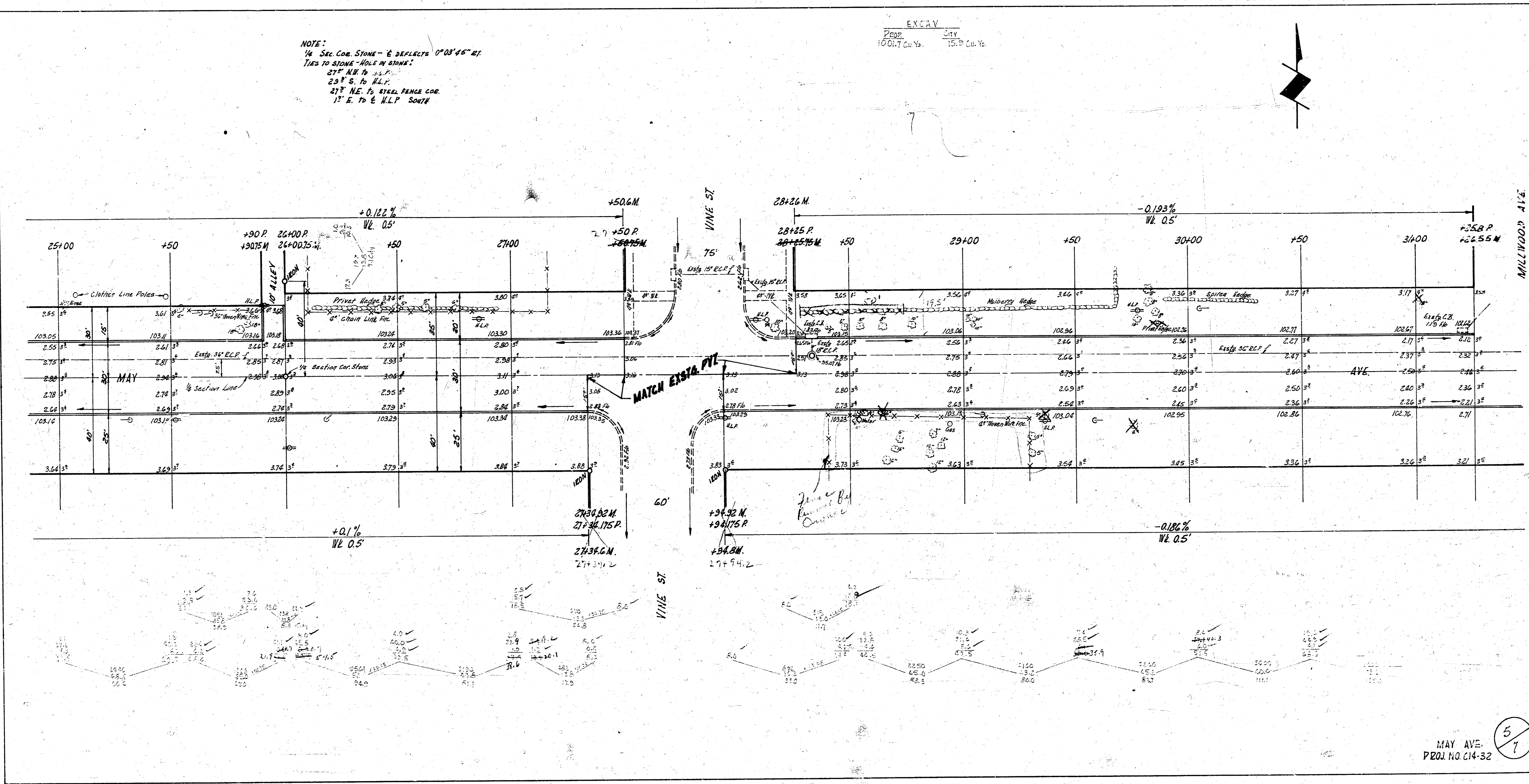


MAY AVE  
PROJ NO. C14-32



NOTE:  
 1/2" SCL. CON. STONE - 6" DEPLETS 0°00'45" RT.  
 TAG TO STONE - HOLE IN BRN.  
 27" N.R. H. 1/2" P.  
 25" S. To R.L.P.  
 27" N.E. To RURAL FENCE COR.  
 17" S. To E. N.L.P. 3074

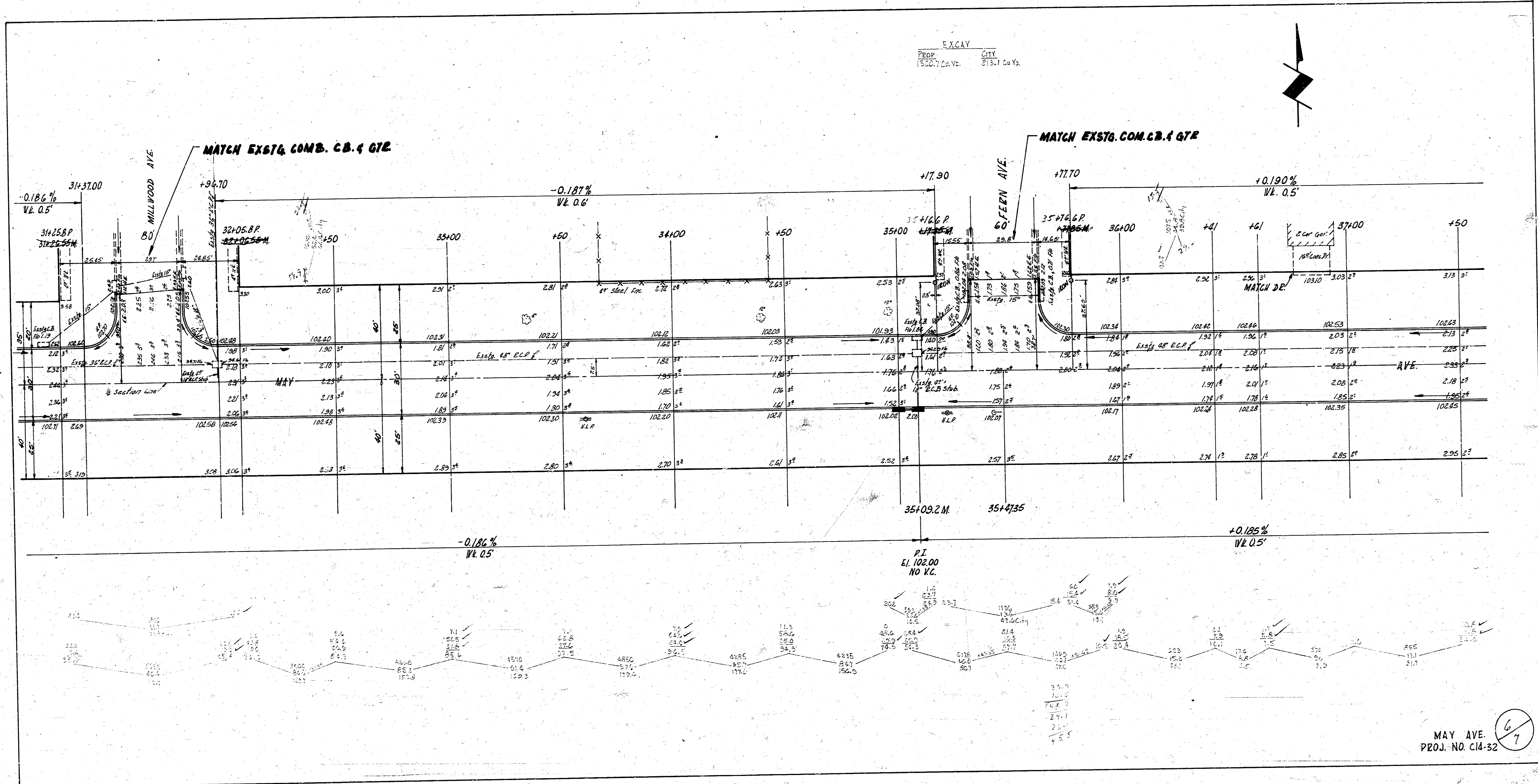
EXC.V  
 Prop. City  
 1001.7 Cu. Ys. 75.3 Cu. Ys.



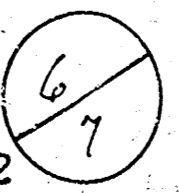
MAY AVE  
 PROJ. NO. C14-32

5/7

EXCAV  
PROP. CITY  
1932/7/24/25. 215.1 Co. Va.

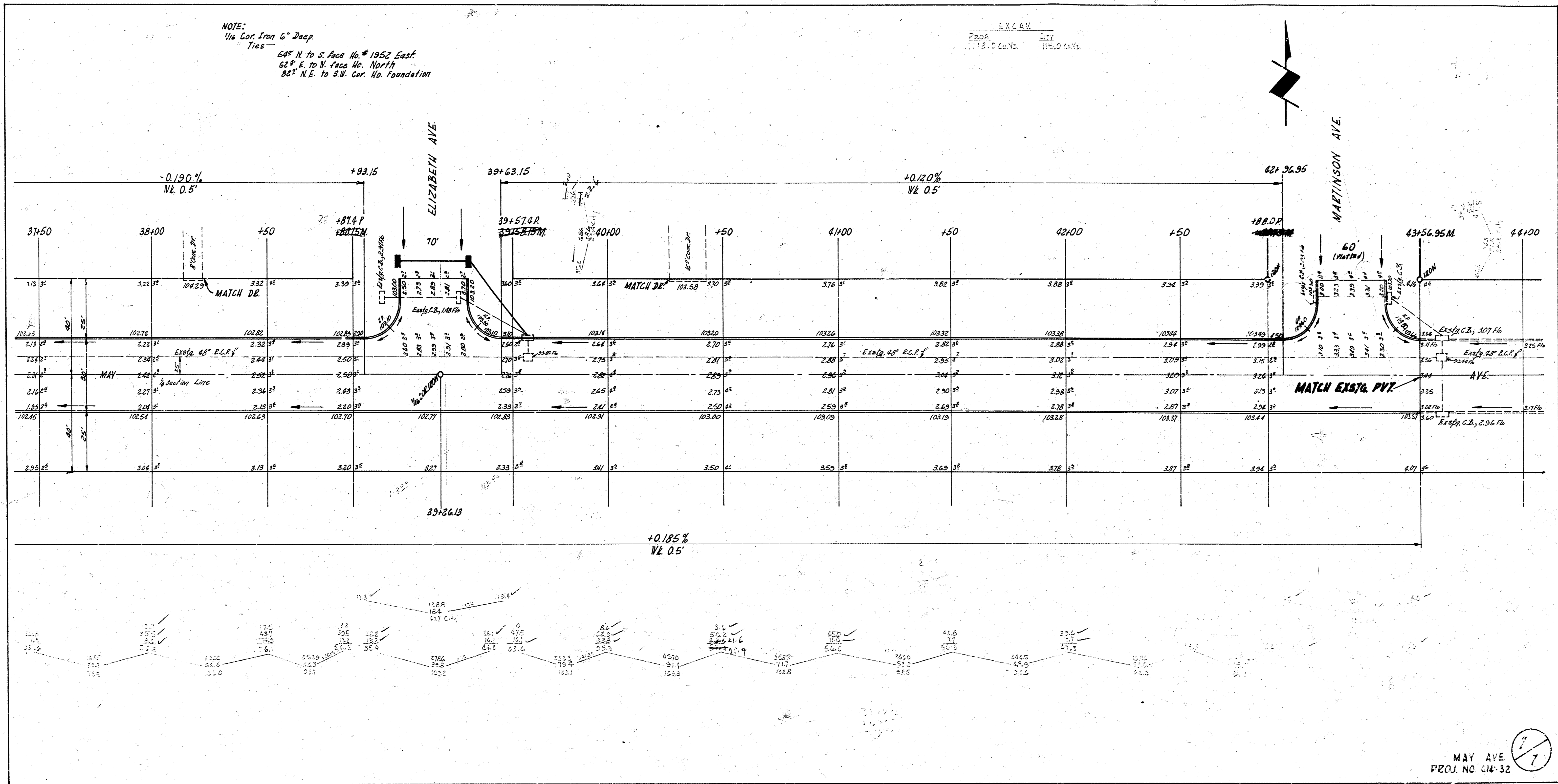


MAY AVE  
PROJ. NO. C14-52

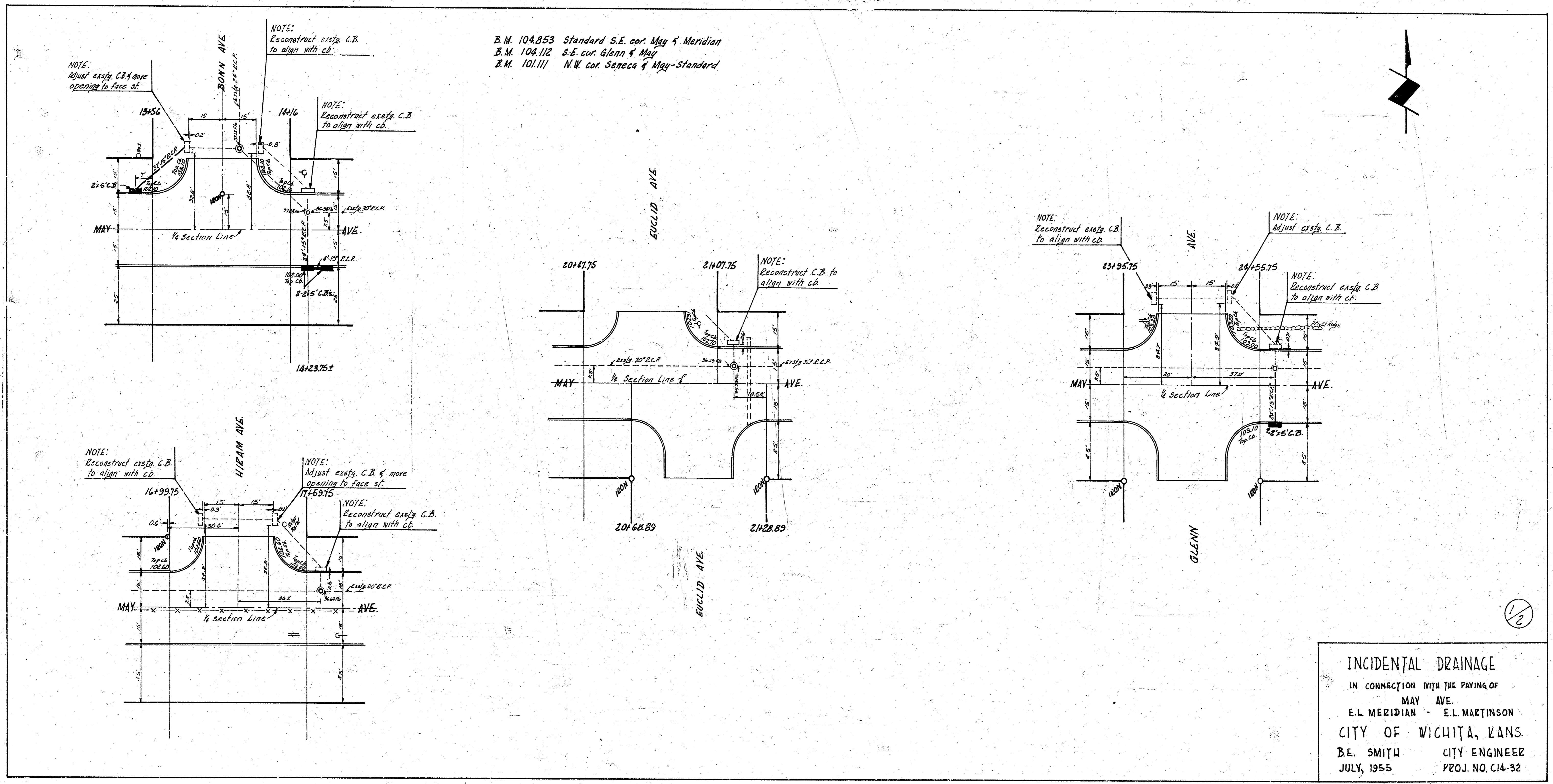


NOTE:  
 1/4 Cor Iron 6" Deep  
 Ties  
 54° N. to S. face No. 1952 East  
 62° E. to N. face No. North  
 82° N.E. to S.W. Cor. No. Foundation

EXCAV  
 720R  
 1125.0 Cu Yd  
 571  
 1180.0 Cu Yd



Survey Young  
Plan 472  
C.S.P.



1/2

