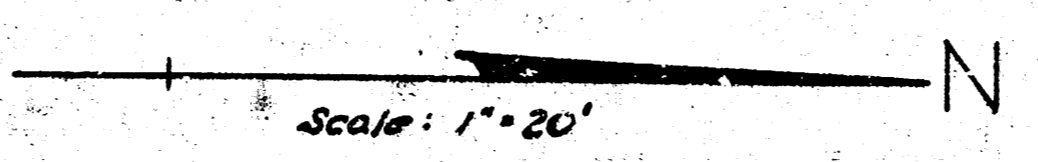


B.M. 158.76 "R" in R.C.G. Inc. top of N. end of W. curb on Maus S. of E. 12th Street.

B.M. 161.78 N.W. corner conc. porch on brick house 1332 Caddy Lane.



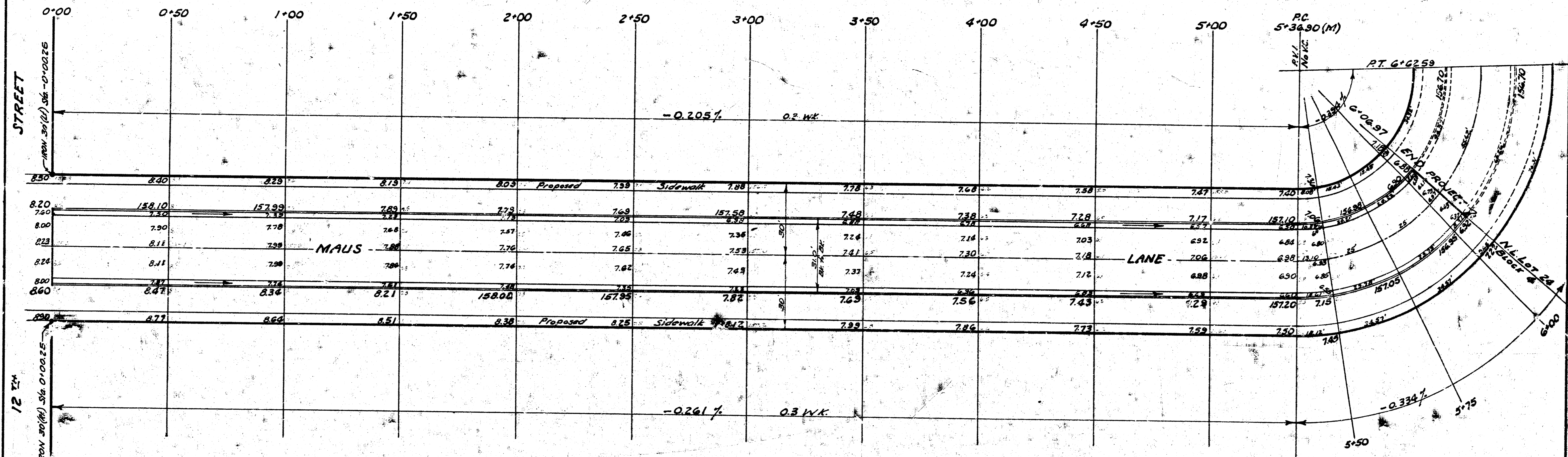
NOTE:
Excavated material from 12th St. Proj. C18-47 to be used on this project.

NOTE:
Contractor to clear right-of-way, grade parkings & compact fill for proposed sidewalk. Sidewalk to be constructed by others.

Base Line is to Pavement
2.93889 min./ft

Station Point	Alignment	Deflection	Chord Arc	Chord Arc
G+62.53 RT	A=91°55'	45°57'30"	38.47	39.80
G+66.97	R=78.35'	25°37'15"	4.82	4.82
G+00	L=125.68'	23°04'20"	17.59	17.66
S+75		13°55'52"	7.59	7.66
S+50		4°47'24"	3.25	3.26
S+36.90 PC				

Survey DCD
 Drawn by
 E.K.
 Checked by



EXCAVATION

206 Cu.Yds.
+10% 21
Totals 227 Cu.Yds.

COMPACTED FILL

280 Cu.Yds.
28 "
308 Cu.Yds.
214 Sub-Grade Modification
522 Cu.Yds.



MAUS LANE
 N.L. 12th St. N.L. Lot 24, Blk. 4
 WESTLINK VILLAGE 6th ADDN.
 26-2-30 A.C.
 B.E. SMITH CITY ENGINEER
 CITY OF WICHITA KANSAS
 Date: Sept. 1972
 Project No. C18-49

1/2