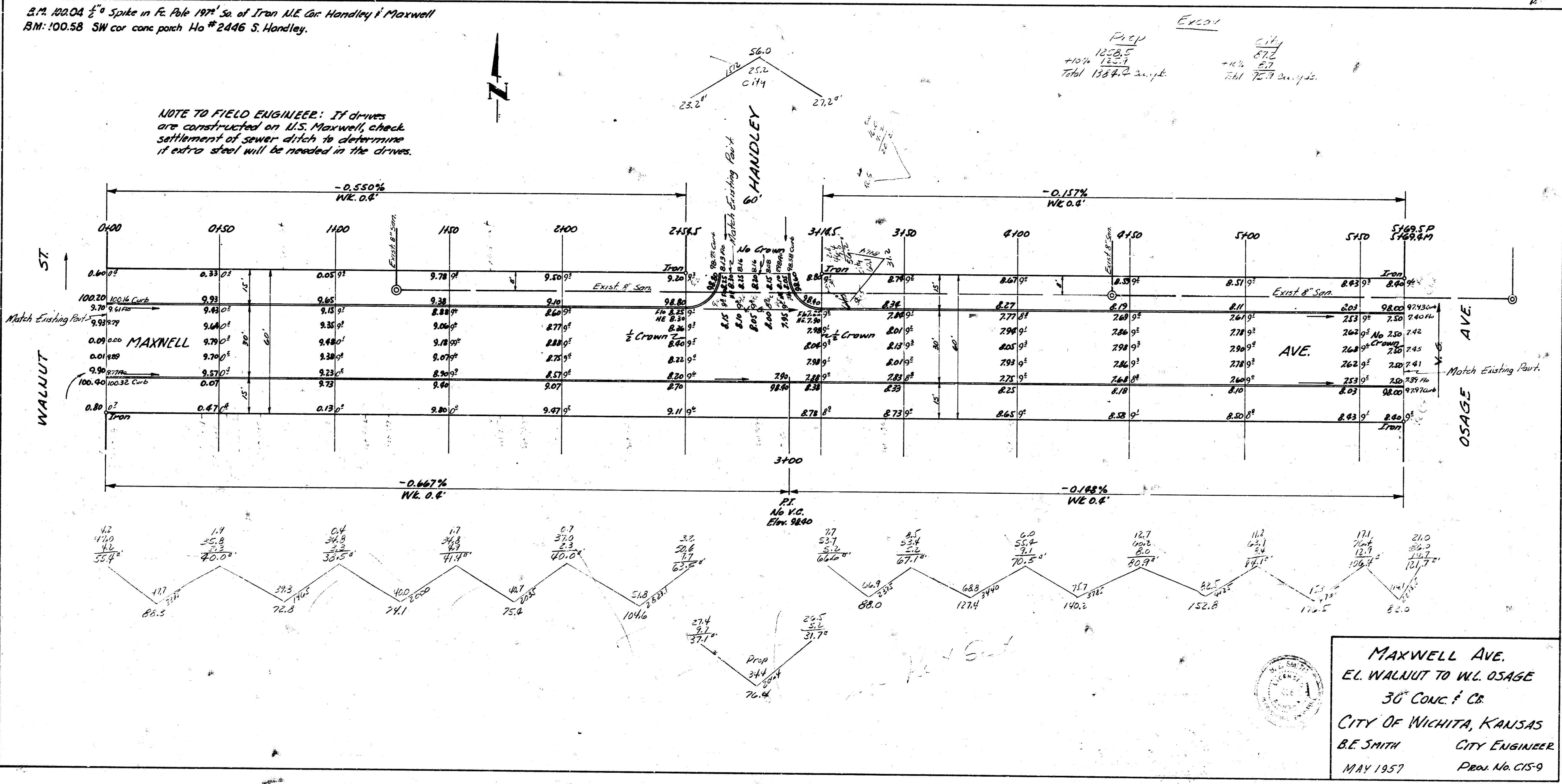


2.P. 20A.04 1/2" Spike in Fe. Pole 197' S. of Iron N.E. Cor. Handley & Maxwell
 BM: 100.58 SW cor conc. patch Ho #2446 S. Handley.

NOTE TO FIELD ENGINEER: If drives are constructed on U.S. Maxwell, check settlement of sewer ditch to determine if extra steel will be needed in the drives.



MAXWELL AVE.
 EL. WALNUT TO WL. OSAGE
 30" CONC. & CB.
 CITY OF WICHITA, KANSAS
 B.E. SMITH CITY ENGINEER
 MAY 1957 PROJ. No. C15-9