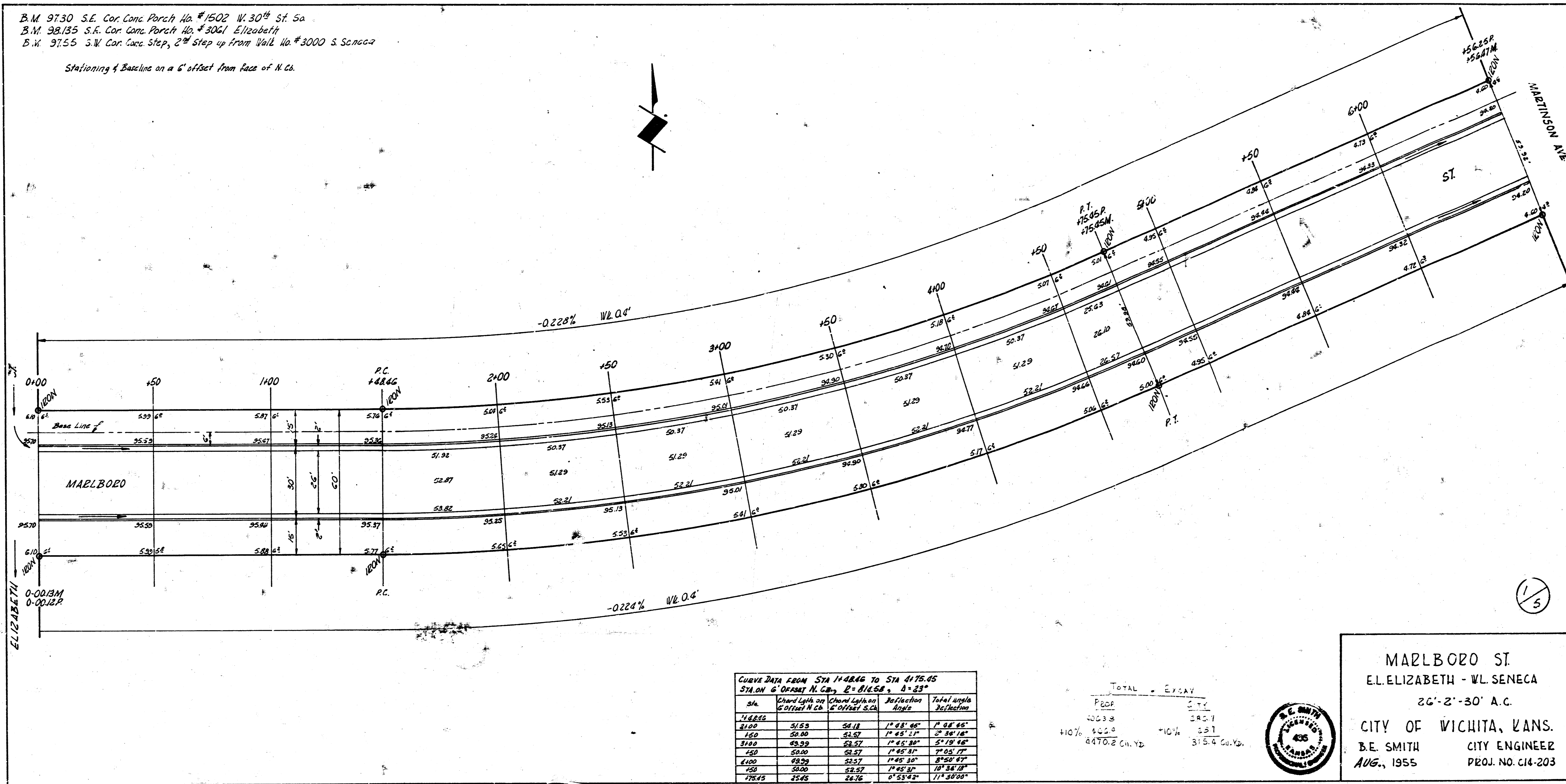


B.M. 97.30 S.E. Cor. Conc. Porch No. #1502 W. 30th St. Sa
 B.M. 98.135 S.E. Cor. Conc. Porch No. #3061 Elizabeth
 B.M. 97.55 S.W. Cor. Conc. Step, 2nd Step up from Walk No. #3000 S. Seneca
 Stationing of Baseline on a 6' offset from face of N.C.



Survey done by B.S. 1/26/50
 100
 100
 100

CURVE DATA FROM STA 1+48.66 TO STA 4+75.45
 STA ON 6' OFFSET N.C., R=816.58, Δ=83°

Sta	Offset from N.C.	Offset from S.C.	Deflection Angle	Total angle
1+48.66	36.53	34.18	1° 48' 40"	1° 48' 40"
1+50	36.40	34.27	1° 45' 37"	2° 34' 17"
3+00	35.39	33.57	1° 45' 30"	2° 19' 48"
4+00	34.00	33.57	1° 45' 31"	1° 05' 17"
4+100	33.39	33.57	1° 45' 31"	0° 50' 57"
4+50	33.00	33.57	1° 45' 31"	1° 34' 28"
4+75.45	33.45	33.76	0° 53' 42"	1° 34' 28"

TOTAL - EXCAV

PROP	CITY
100.38	380.7
110% 100.38	10% 38.1
6470.2 Cu. Yd.	315.4 Cu. Yd.



MARLBORO ST
 E.L. ELIZABETH - W.L. SENECA
 26'-2'-30" A.C.
 CITY OF WICHITA, KANS.
 B.E. SMITH
 CITY ENGINEER
 AUG., 1955
 PROJ. NO. C14-203

