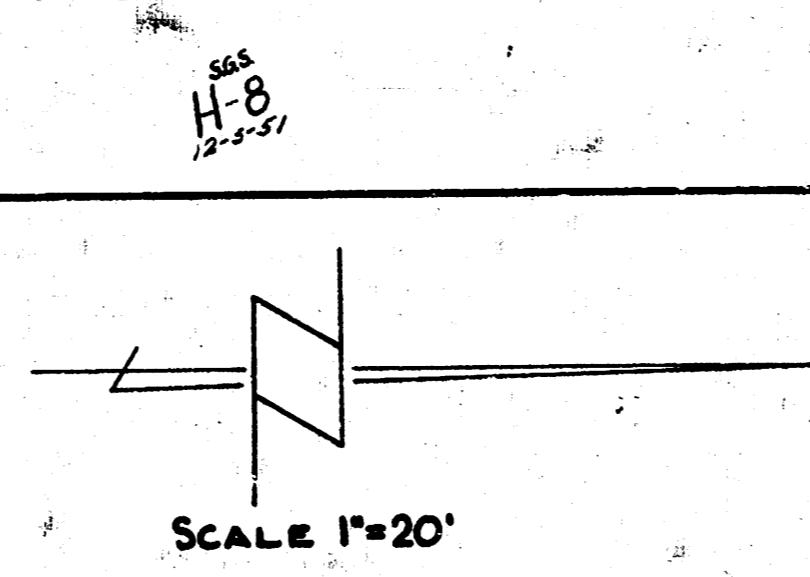
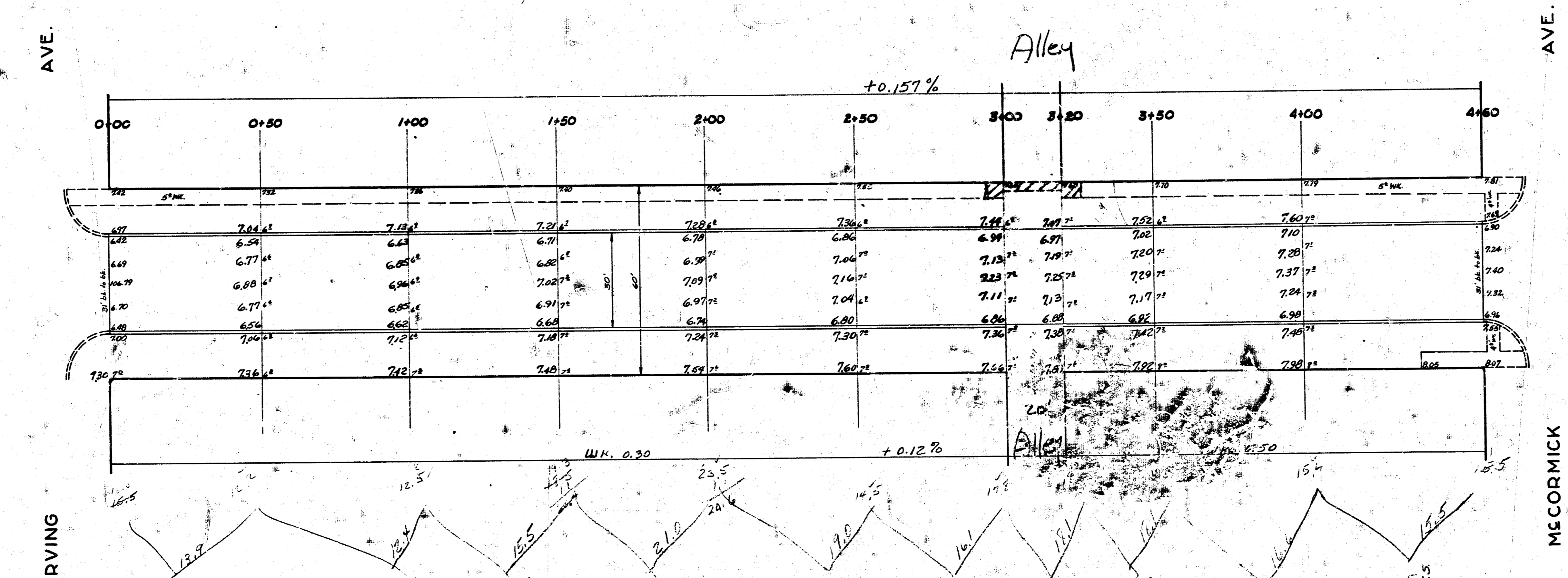


BM: 106.82 6" in Globe West cb SW cor Martinson & Irving.

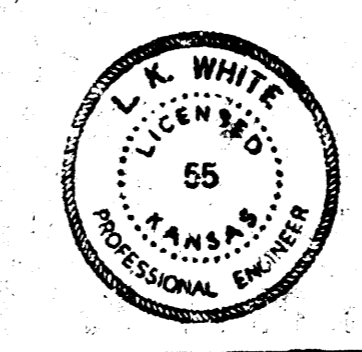
Prof 2.4  
 25.7  
 23.0  
 2.7  
 38.5  
 35.2  
 27.5  
 20.1  
 34.5  
 28.7  
 26.8  
 +10.8 26.1  
 35.9 Cuyd



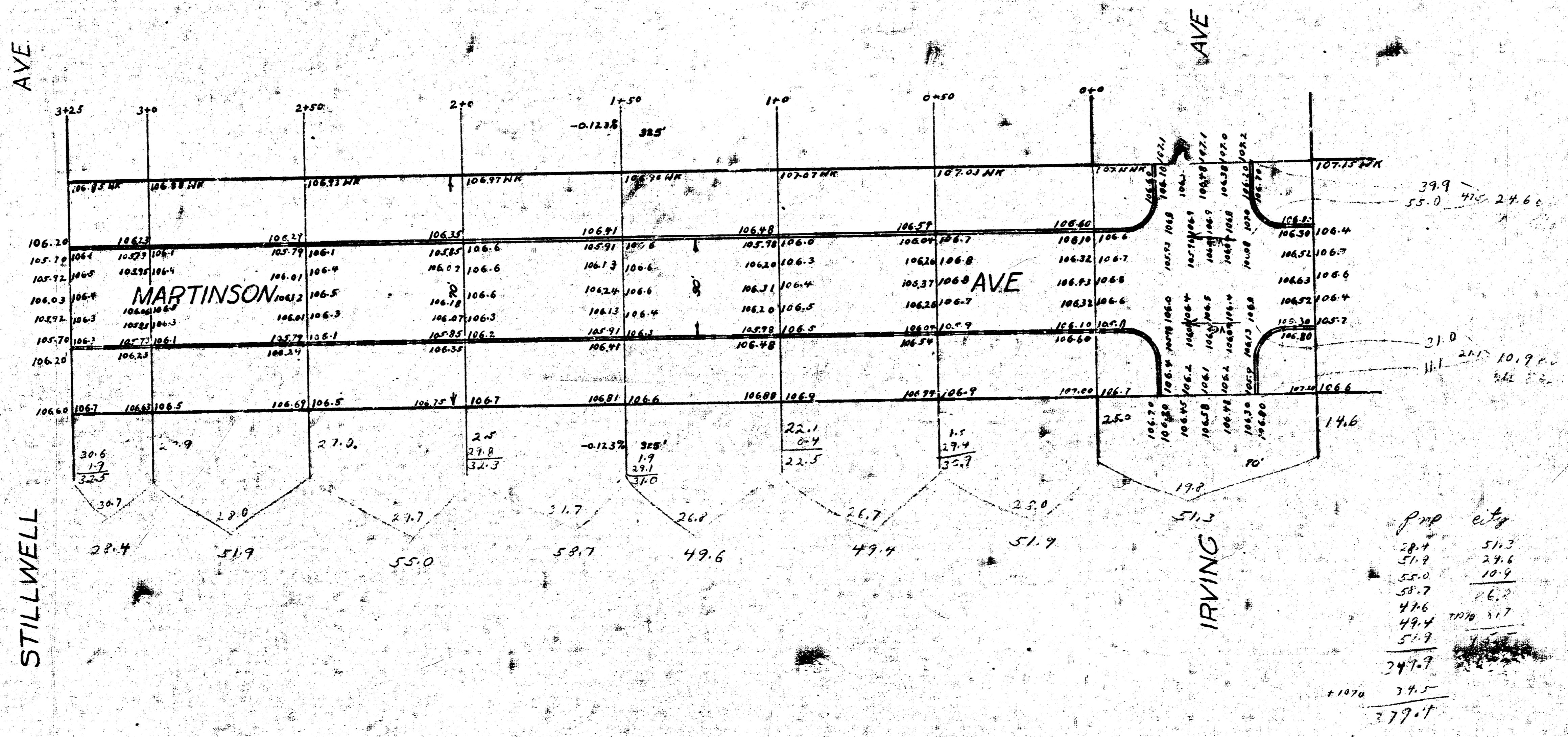
BM: 107.50 "K" in Keeler bl. cb (W) SW cor Martinson & McCormick.



MARTINSON AVE.  
 NL IRVING AVE. TO SLM & CORMICK AVE  
 30' Conc & Cb.  
 CITY OF WICHITA, KANSAS  
 L.K. WHITE  
 OCT. 1951  
 CITY ENGINEER  
 PROJ. NO. C 13-141



1941  
 MARTINSON AVE - NL STILLWELL AVE - NL IRVING AVE  
 30' CONC



B.M. 107.07 'K' IN KENSLE B.M. OF NW S.W. COR. IRVING + MARTINSON



PROP	CITY
28.7	51.3
51.9	24.6
55.0	10.9
58.7	16.7
49.4	10.9
51.9	51.7
247.7	
1070	74.5
	279.1
	75.5
	379.4
8 sub	77.4
Total	