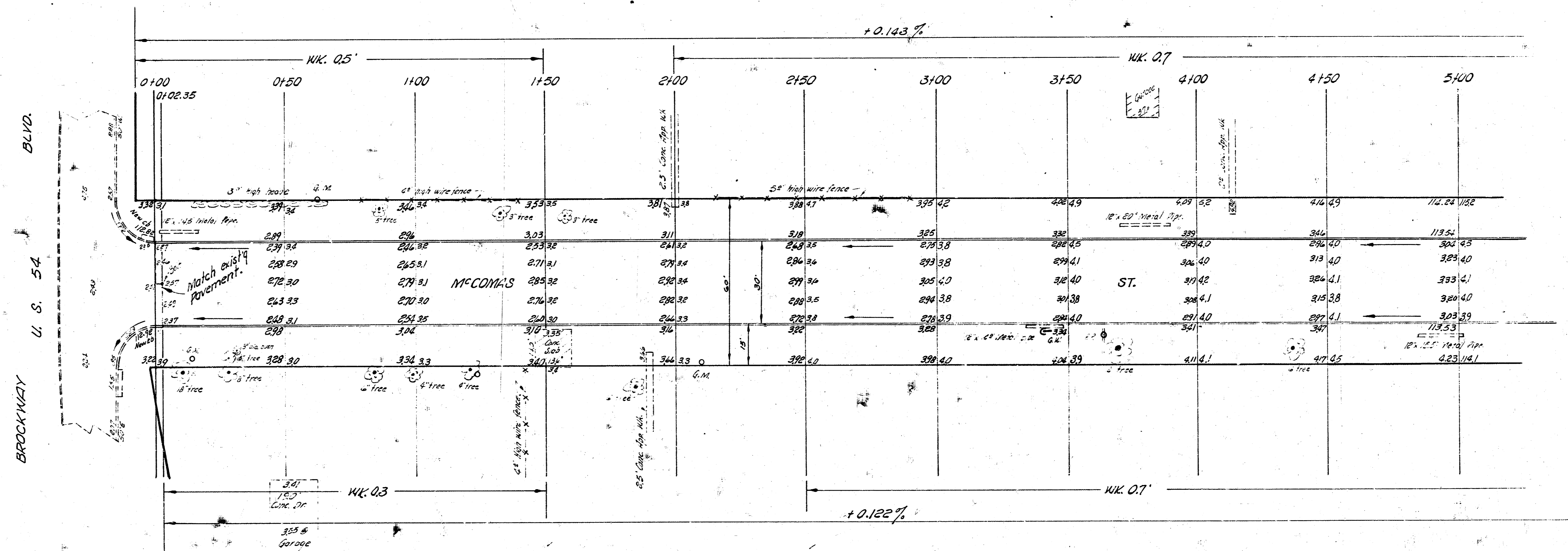


B. M. 112.90 + on top of curb 12' S. of N. end N.E. Radius drive N. Side U.S. 54.
 Chaining from S. to N. on 4.

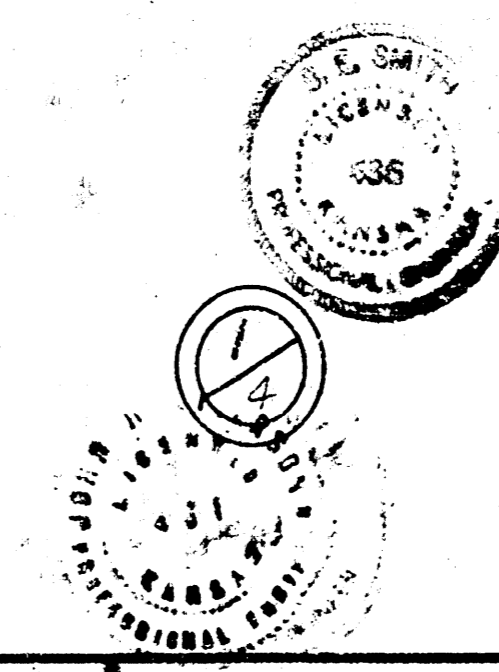
NOTICE TO CONTRACTOR:
 All entrance pipes are to be disposed of in accordance with instructions of city dirt checker.

SCALE 1"=20'

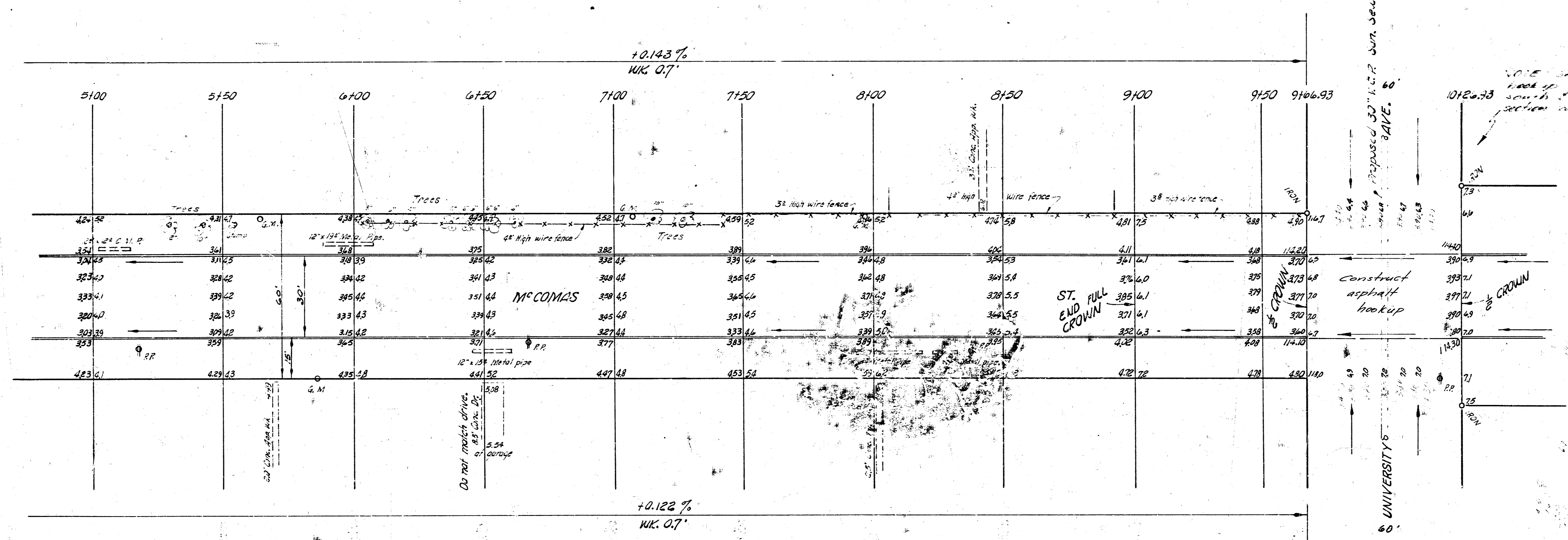
Survey of Lewis Bl. U.S. 54
 1/2" = 100'
 Checked



McCOMAS ST.
 SL MAPLE TO NL BROCKWAY BLVD.
 30' CONC. & CB.
 CITY OF WICHITA, KANS.
 B. E. SMITH - CITY ENGINEER
 JULY 1957. PROJ. NO. C15-22-B



SCALE 1" = 20'

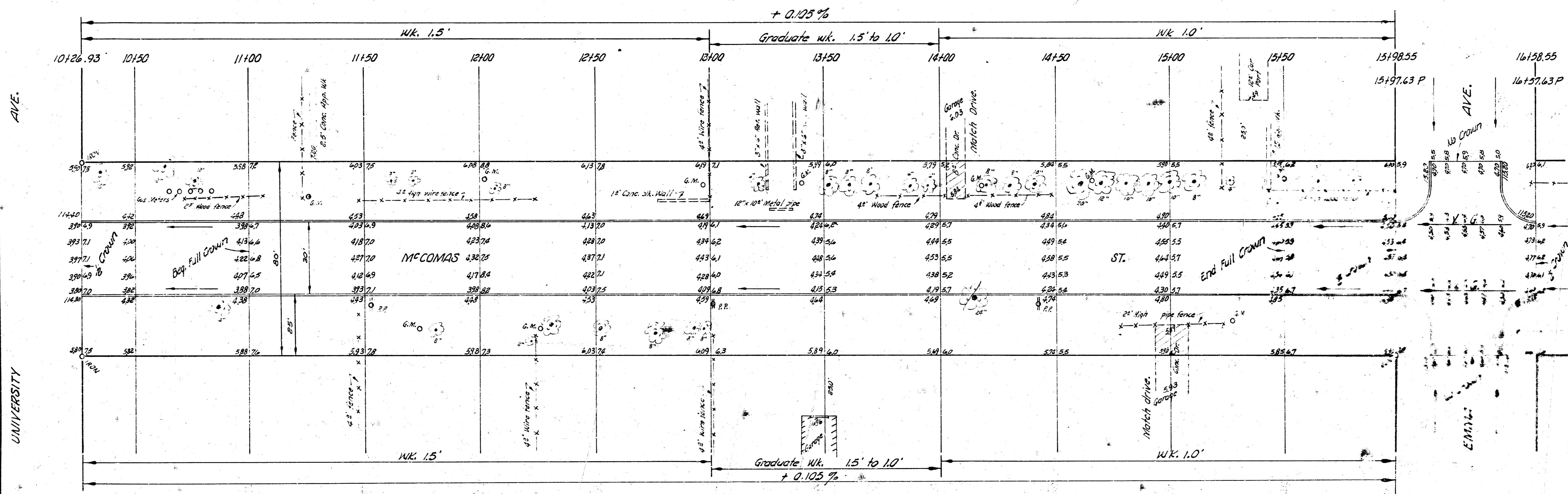


(24)

McCOMAS ST.
 PROJ. NO. C15-228

B. M. 65 SE cor. conc. Birch House 447 McComas [2nd house N. of University W. side St.]
 Stationing So. to 4a on E. of St.

SCALE 1" = 20'



MCCOMAS ST.

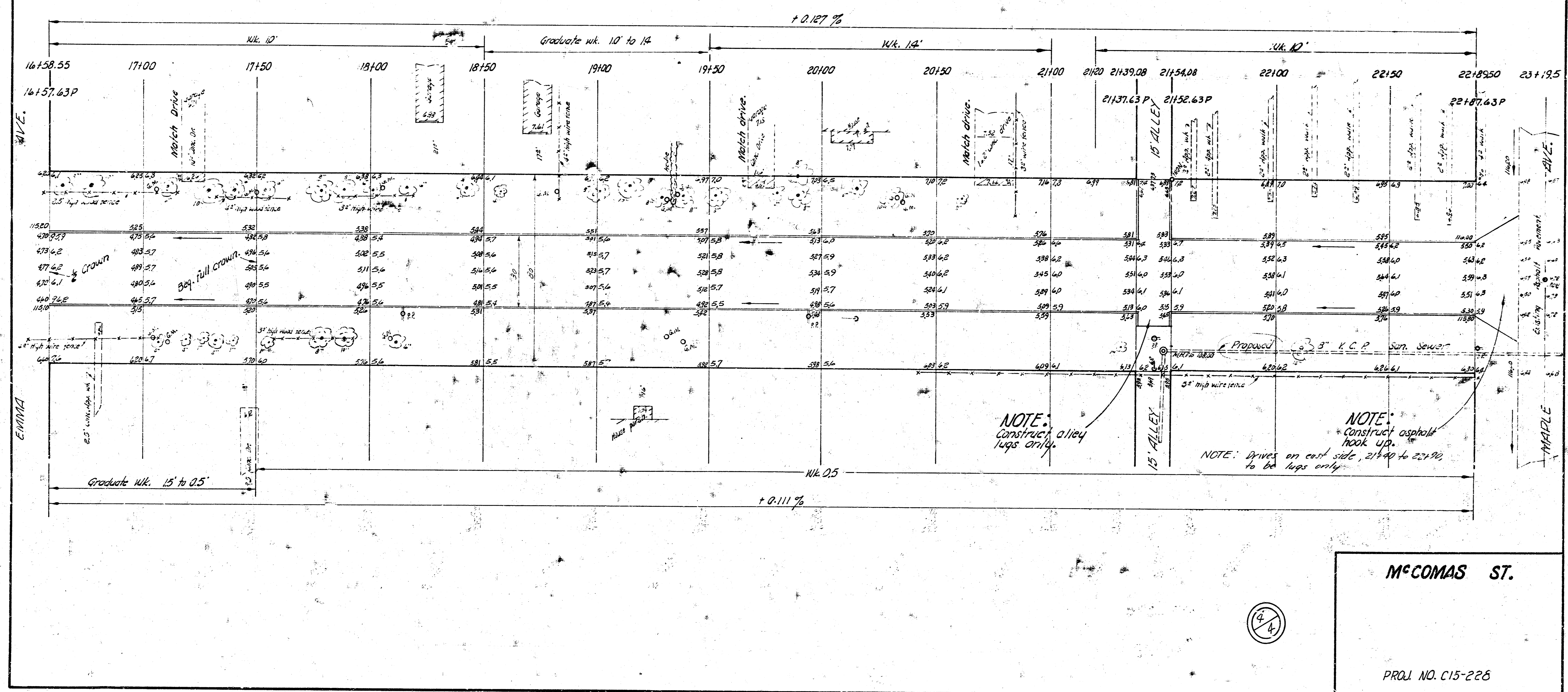
(3/4)

PROJ. NO. C15-228

B. M. 117.55 R.P. Spike S. Face H.L.P. S.E. corner M^cComas & Maple.
 B. M. 117.71 "f" on NE corner concrete base Signal light S.W. corner West St. & Maple.
 B. M. 116.45 NE cor. conc. floor Car Port S.W. cor. M^cComas & Emma.

Stationing Sd. to No. on E M^cComas.

SCALE 1" = 20'



MCCOMAS ST.

PROJ. NO. C15-226