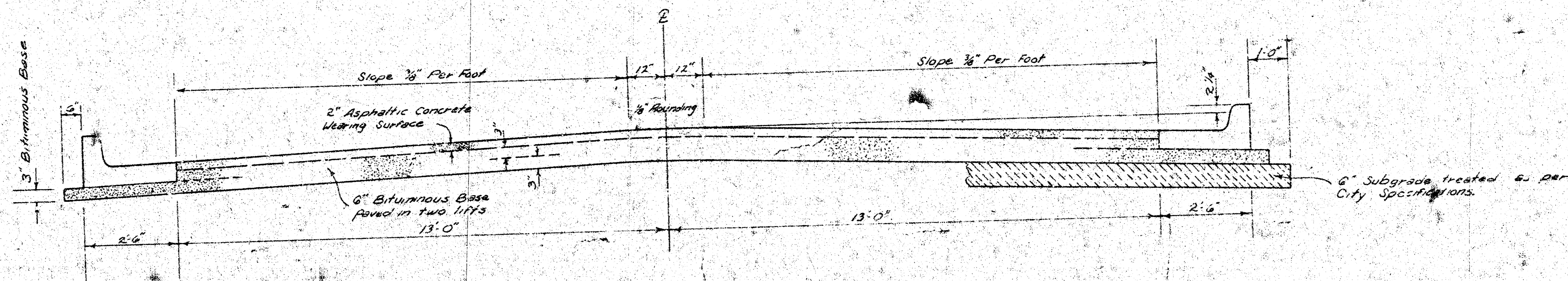


**Mc COMAS**  
 N.L. ST. LOUIS - N.L. NEWELL  
 472-76-245-80498-000-000-001  
 DAKS577014



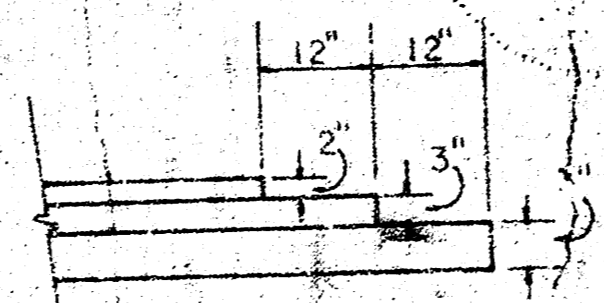
**TYPICAL SECTION**

3' ASPHALTIC CONCRETE PAVEMENT WITH BITUMINOUS BASE

*The A.C. pavement between the Comb Curb & Gutter shall be paid as 3a. Yds. B' A.C. Pavement (6 Bituminous Base). The Bituminous Base under the Comb Curb & Gutter shall be paid as 3a. Yds. 3' Bituminous Base.*

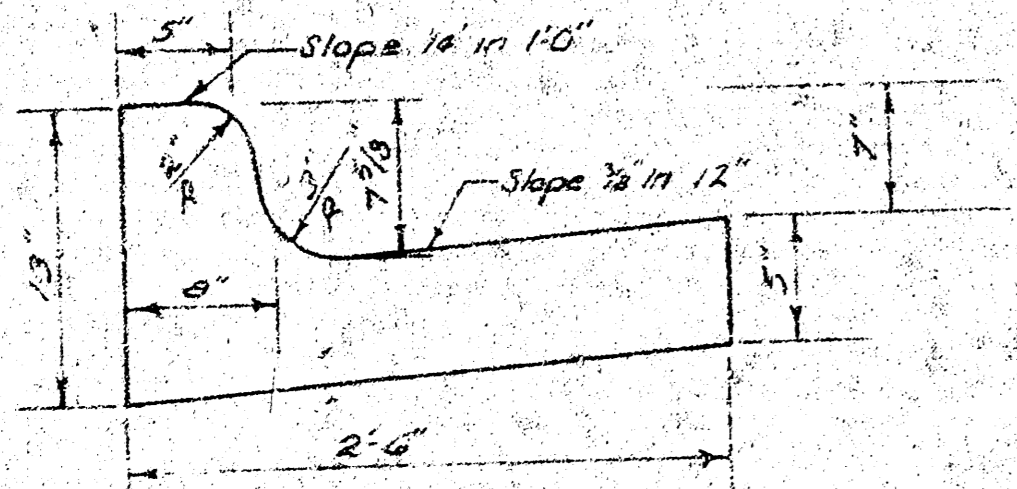
A TACK COAT OF EMULSIFIED ASPHALT (SS-1H) SHALL BE APPLIED AT AN APPROXIMATE RATE OF 0.05 GALLONS PER SQ. YD. BETWEEN LIFTS OF ASPHALTIC MATERIALS WHEN ORDERED BY THE ENGINEER. TACK COAT WILL NOT BE PAID FOR DIRECTLY AND SHALL BE CONSIDERED AS SUBSIDIARY TO PRICE BID FOR ASPHALTIC PAVEMENT. BITUMINOUS BASE AND ASPHALTIC CONCRETE WEARING SURFACE SHALL BE PLACED WITH A LAYDOWN MACHINE HAVING AUTOMATIC ELECTRONIC CONTROLS FOR CROWN AND GRADE. CONSTRUCTION JOINTS IN EACH LIFT SHALL BE STAGGERED; A MINIMUM DISTANCE OF 1' WITH JOINTS IN PRECEDING LIFTS AND SUCH THAT A JOINT WILL BE CONSTRUCTED ON THE PAVEMENT CENTERLINE IN THE TOP LIFT.

**DETAIL OF TRANSVERSE CONSTRUCTION JOINTS**

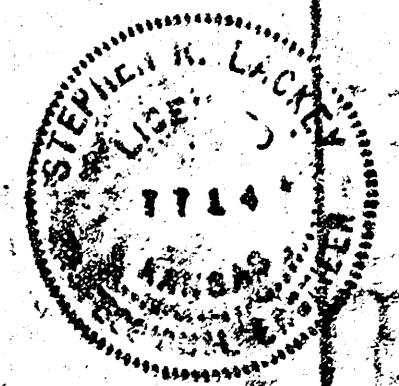
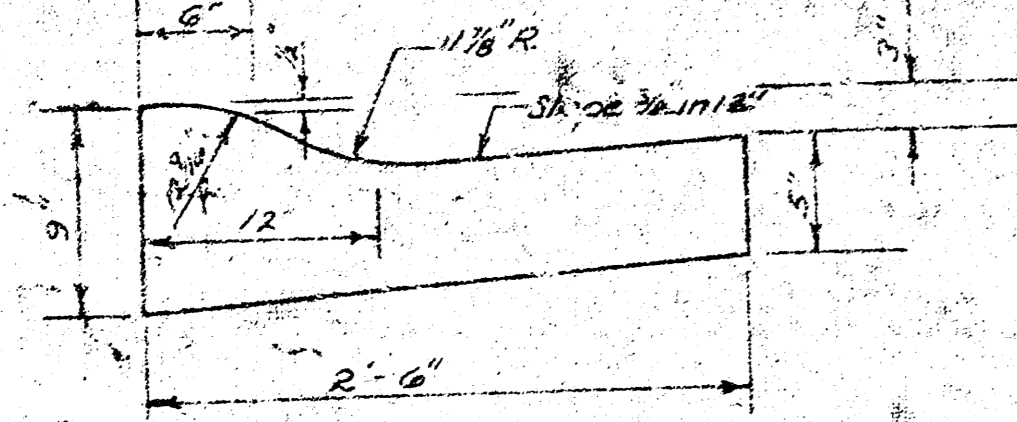


TRANSVERSE CONSTRUCTION JOINTS SHALL BE CONSTRUCTED IN FLEXIBLE BASE PAVEMENTS AT LOCATIONS WHERE PAVEMENT TEMPORARILY ENDS TO FACILITATE FUTURE PAVEMENT CONSTRUCTION AS SHOWN BY DETAIL. THE COST OF CONSTRUCTING THE TRANSVERSE CONSTRUCTION JOINTS SHALL NOT BE MEASURED OR PAID FOR DIRECTLY BUT SHALL BE INCLUDED IN THE BID PRICE FOR SQUARE YARDS OF ASPHALTIC CONCRETE PAVEMENT.

**COMBINED CURB & GUTTER**



**ROLL TYPE CURB & GUTTER**

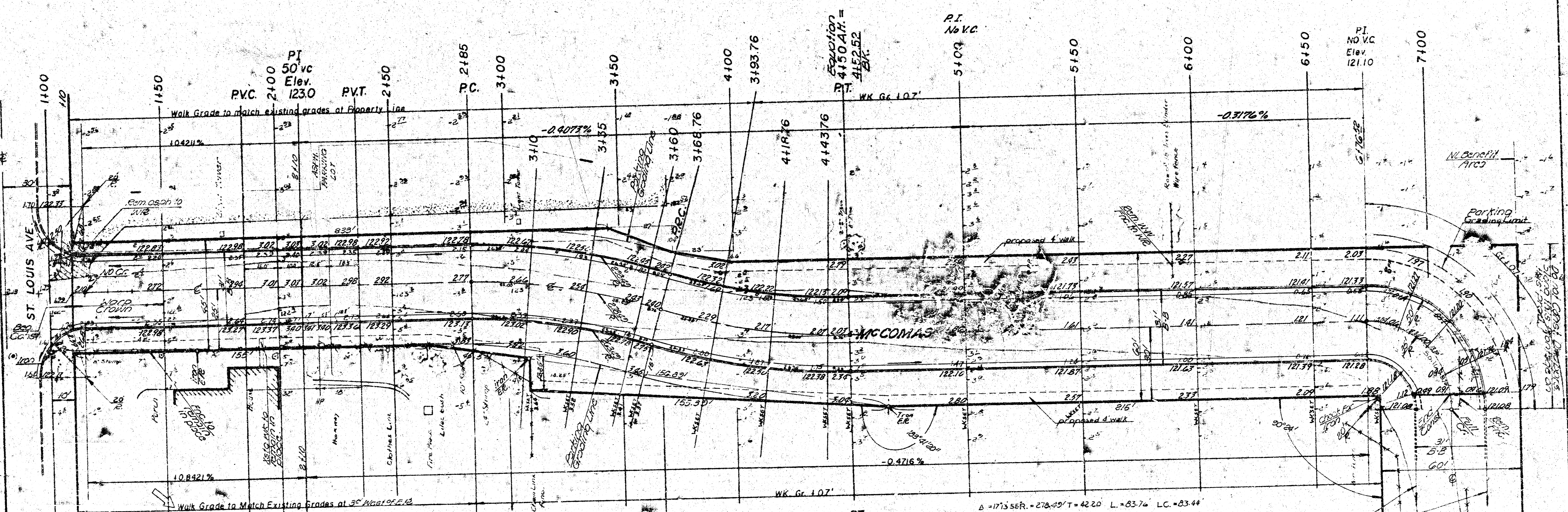
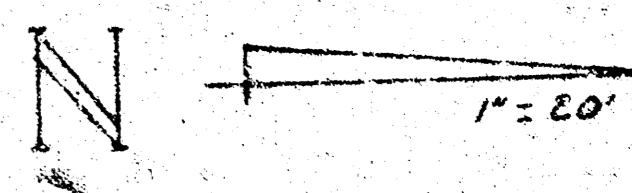


CITY OF WICHITA, KANSAS  
 DEPARTMENT OF PUBLIC WORKS - ENGINEERING  
 R. W. LINN CITY ENGINEER  
 DATE \_\_\_\_\_ PROJ. NO. \_\_\_\_\_

1/2

**FILMED FROM THE BEST AVAILABLE COPY .....**

BM 122.00 City Std. Disc. - 44' N. + 52' W. of @ both Central + West  
 @ is 15' west of and parallel to west line of lot 16, Knight Acres



PVC. PI 50'vc Elev. 123.40  
 PVT. P.C. PRC. PT.

**Earthwork Quantities**

	CITY	PROP.
Excavation +10%	815 CY	1480 CY
Total	-897 CY	-1648 CY
Compacted fill	0.0	0.0
Manipulation	40.54	22142.54

Sta. 2180 (East Side)  
 NOTE - Field Eng. & Contractor:  
 If prop. owner requests a dr-  
 opp. @ this location use max.  
 width 1000' & slope parking to  
 match. Any work done on pri-  
 vate prop. requires a signed dr-  
 wng form, this work will be consi-  
 dered a part of the parking grading.

**CURVE DATA BASED ON 4 RAD. Δ 83°58'**

STA.	ARC	CHORD LENGTH	DEFLECTION	TOTAL DEFLECTION
3785	PC			0°00'00"
3710	25.00'	27.07'	22.34'	2°34'18"
3660				2°34'18"
3708.76	8.76'	9.48'	3.04'	0°34'04"
3708.76	PRC			0°00'00"
3793.76	25.00'	27.07'	22.34'	2°34'18"
4118.76				2°34'18"
4143.76				2°34'18"
4138.42	8.76'	9.48'	3.04'	0°34'04"

Defl. per Pt. = 6.1120592 mins.

Ditch to Drain, Cost of Ditch to be Incidental to Project  
 Trees to be removed are marked thus except that any trees which in the opinion of the field engineer can be saved shall be spared.

Take ties to Prop. & replace

MCCOMAS AVE.  
 NE. St. Louis to NE. Newell  
 Project No. DRKS 577014  
 412-76-245-80498-000-000-opi

FILMED FROM THE BEST AVAILABLE COPY.....