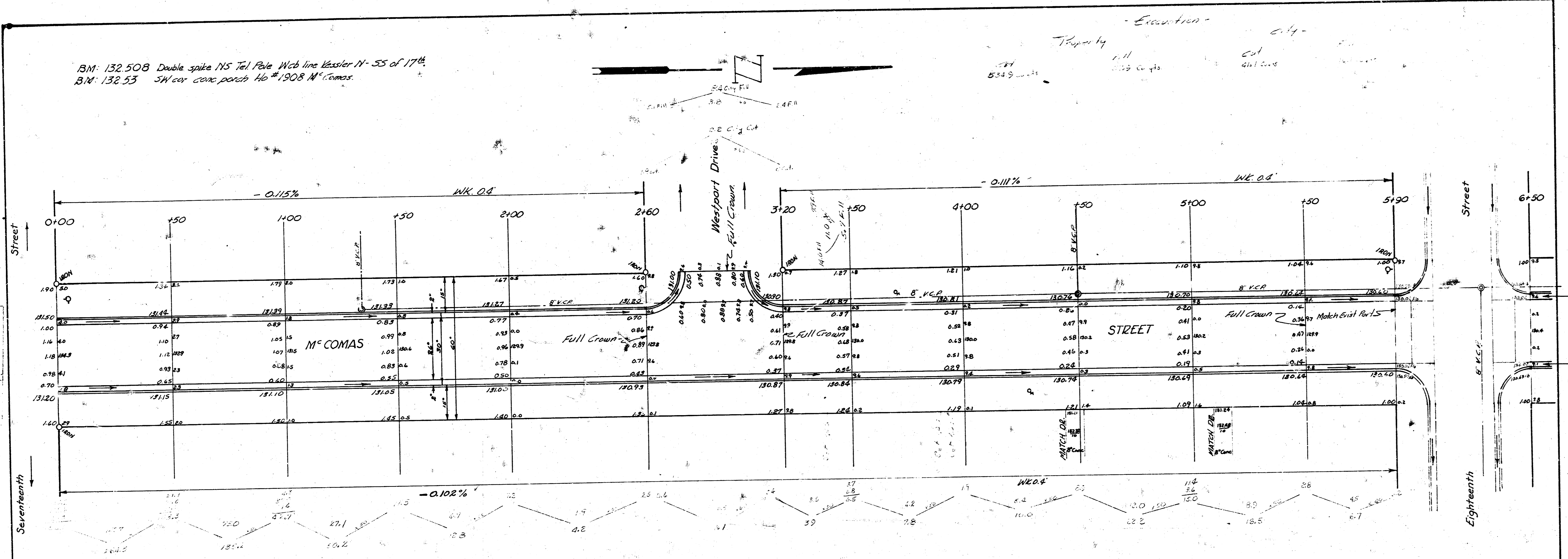


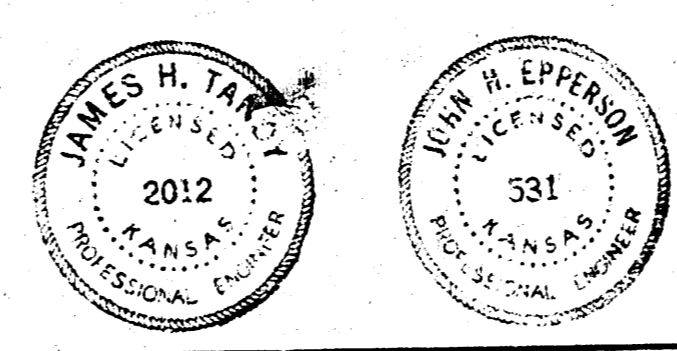
BM: 132.508 Double spike 115 Tel Pole Web line Reader N-55 of 17th
 BM: 132.53 SW cor conc pavers No #1908 McComas



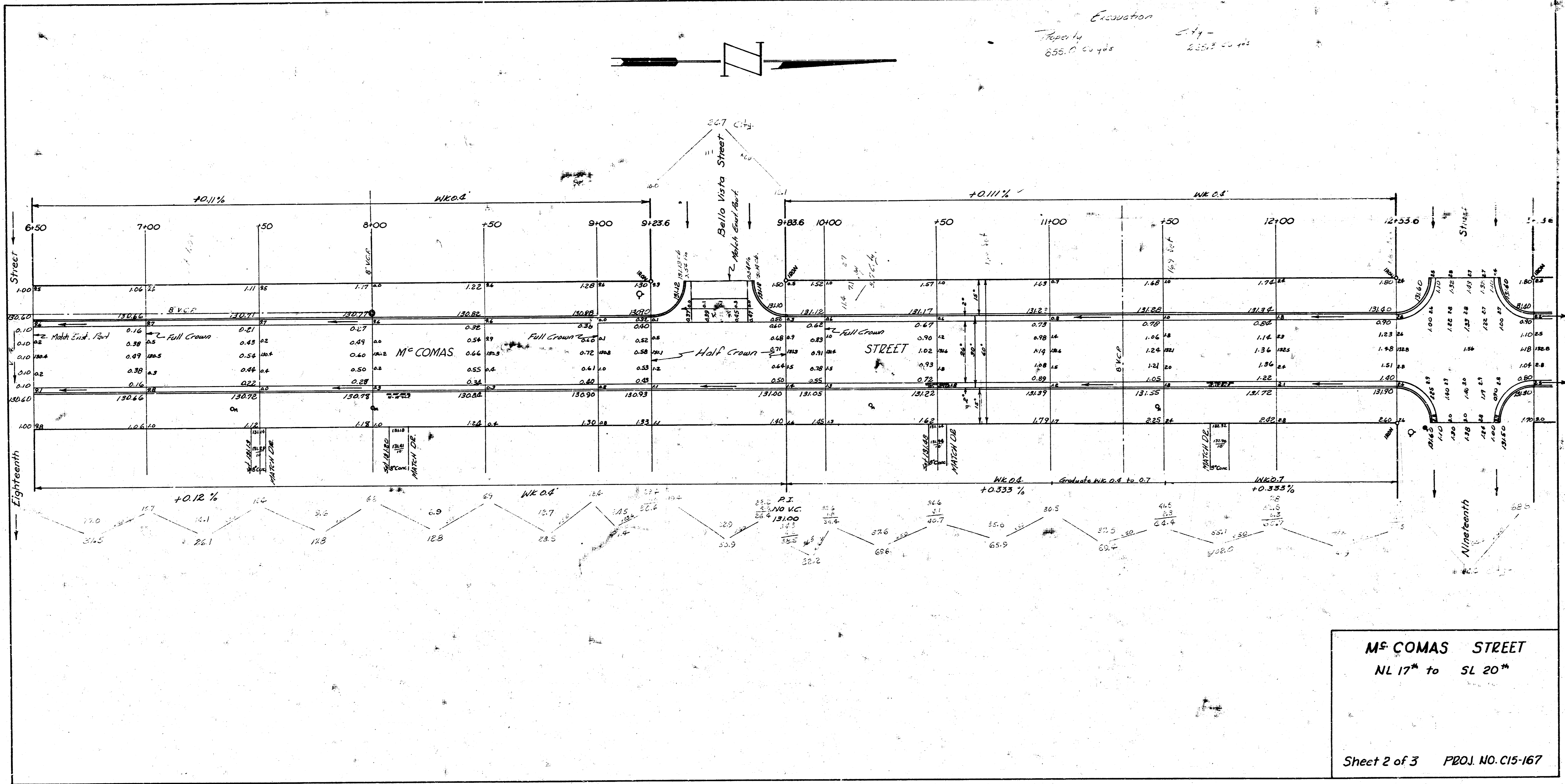
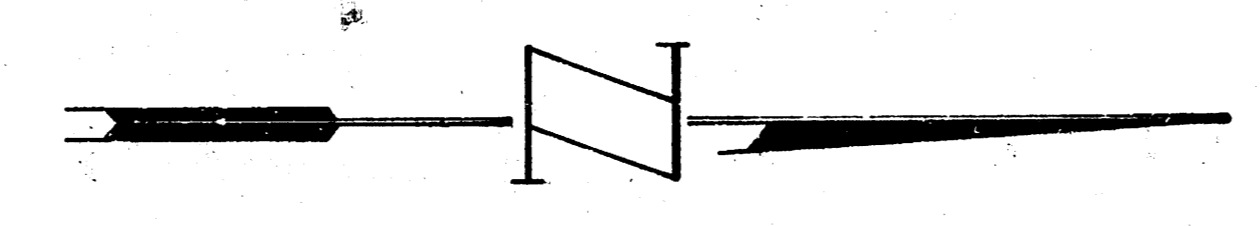
-Excavation Totals-

Property	City
Cut	Cut
32.5	3.0
22.6	31.3
17.1	13.2
10.4	14.7
3.0	13.2
3.0	20.7
31.1	44.2
31.1	15.0

Sheet 1 of 3.
McCOMAS STREET
 NL 17th to SL 20th
 26-2-30AC
 CITY OF WICHITA, KANSAS
 B.E. SMITH CITY ENGINEER
 MAY 1958 PROJ. NO. C15-167



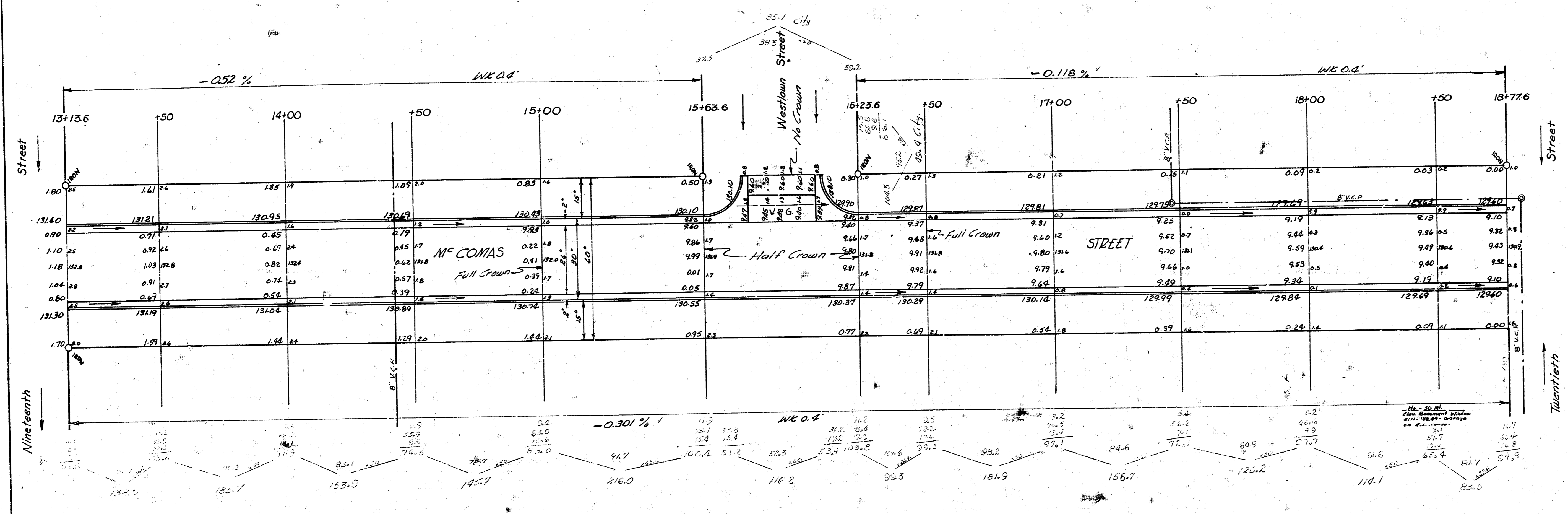
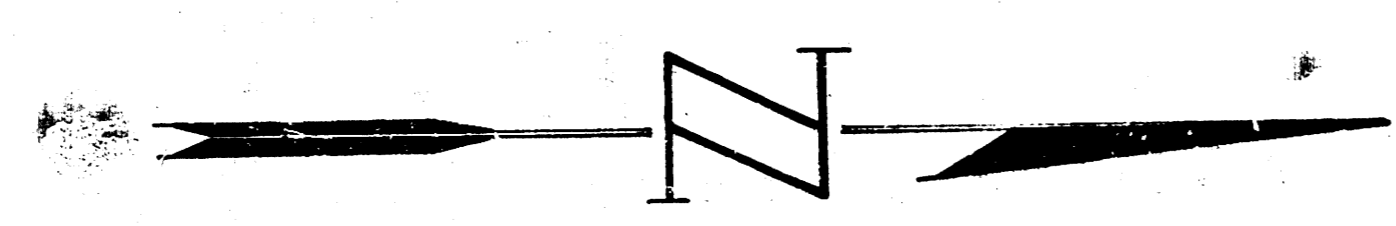
Excavation
 Prop 14
 655 P. 0. 103
 2.14 -
 2.25.2 00 103



Mc COMAS STREET
 NL 17th to SL 20th

Sheet 2 of 3 PROJ. NO. C15-167

Excavation -
 17.17 cu yds
 0.4 -
 136.5 cu yds



M. COMAS STREET
 NL 17^m to SL 20^m

Sheet 3 of 3 PROJ. NO. C15-167