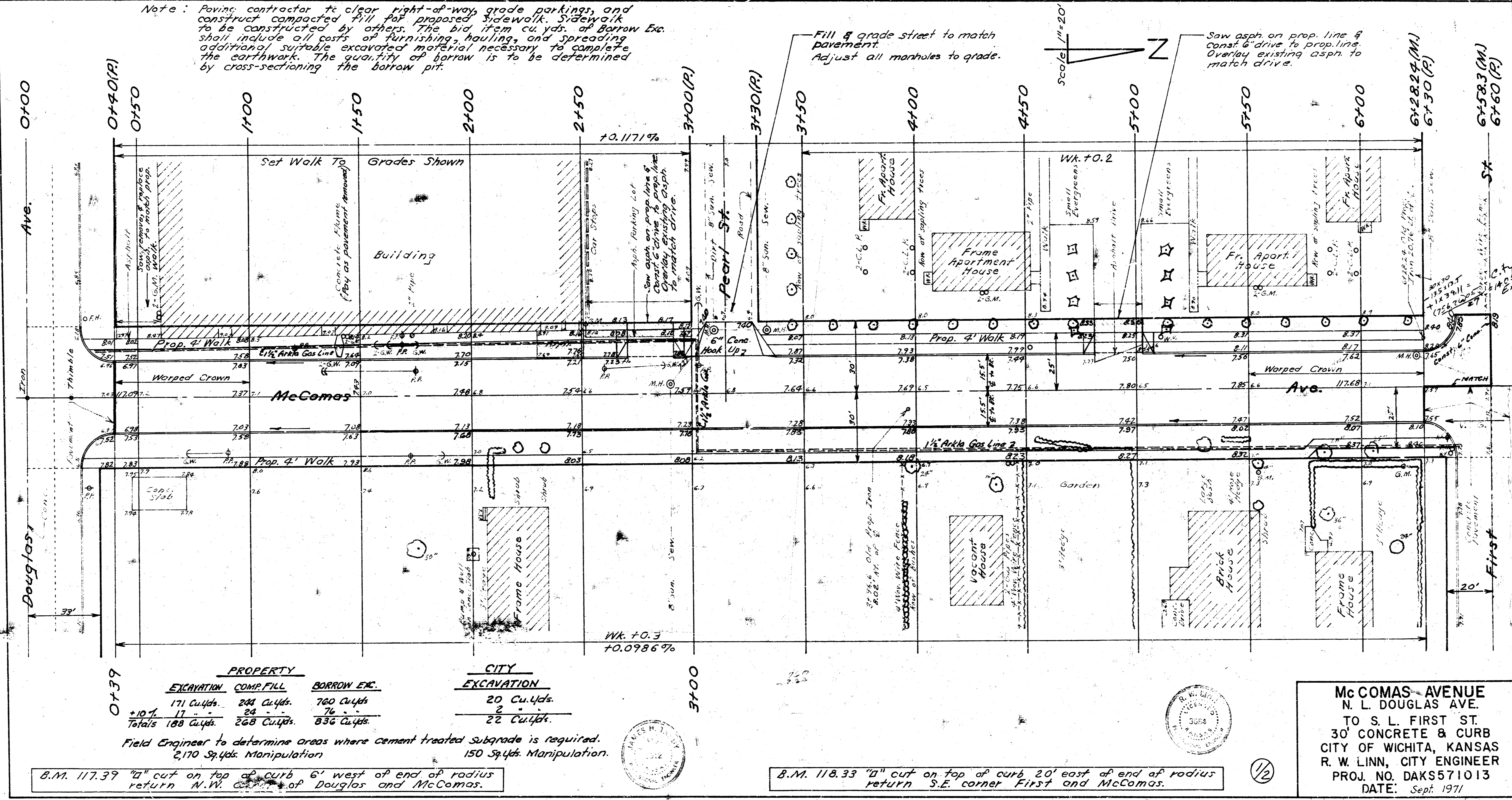


Supt. Martin W. Linn
 City Engineer
 R. W. Linn
 City Engineer
 Chicago



Note: Paving contractor to clear right-of-way grade parkings, and construct compacted fill for prepared sidewalk. Sidewalk to be constructed by others. The bid item cu. yds. of borrow exc. shall include all costs of furnishing, hauling, and spreading additional suitable excavated material necessary to complete the earthwork. The quantity of borrow is to be determined by cross-sectioning the borrow pit.

Fill & grade street to match pavement. Adjust all manholes to grade.

Saw asph on prop. line & const. & drive to prop. line. Overlay existing asph. to match drive.

PROPERTY			CITY	
EXCAVATION	COMP. FILL	BORROW ETC.	EXCAVATION	
171 Cu.Yds.	244 Cu.Yds.	760 Cu.Yds.	20 Cu.Yds.	
17	24	76	2	
Totals 188 Cu.Yds.	268 Cu.Yds.	836 Cu.Yds.	22 Cu.Yds.	

Field Engineer to determine areas where cement treated subgrade is required. 2170 Sq.Yds. Manipulation.
 150 Sq.Yds. Manipulation.

B.M. 117.39 "a" cut on top of curb 6' west of end of radius return N.W. corner of Douglas and McComas.

B.M. 118.33 "a" cut on top of curb 20' east of end of radius return S.E. corner First and McComas.

McCOMAS-AVENUE
 N. L. DOUGLAS AVE.
 TO S. L. FIRST ST.
 30' CONCRETE & CURB
 CITY OF WICHITA, KANSAS
 R. W. LINN, CITY ENGINEER
 PROJ. NO. DAKS571013
 DATE: Sept. 1911