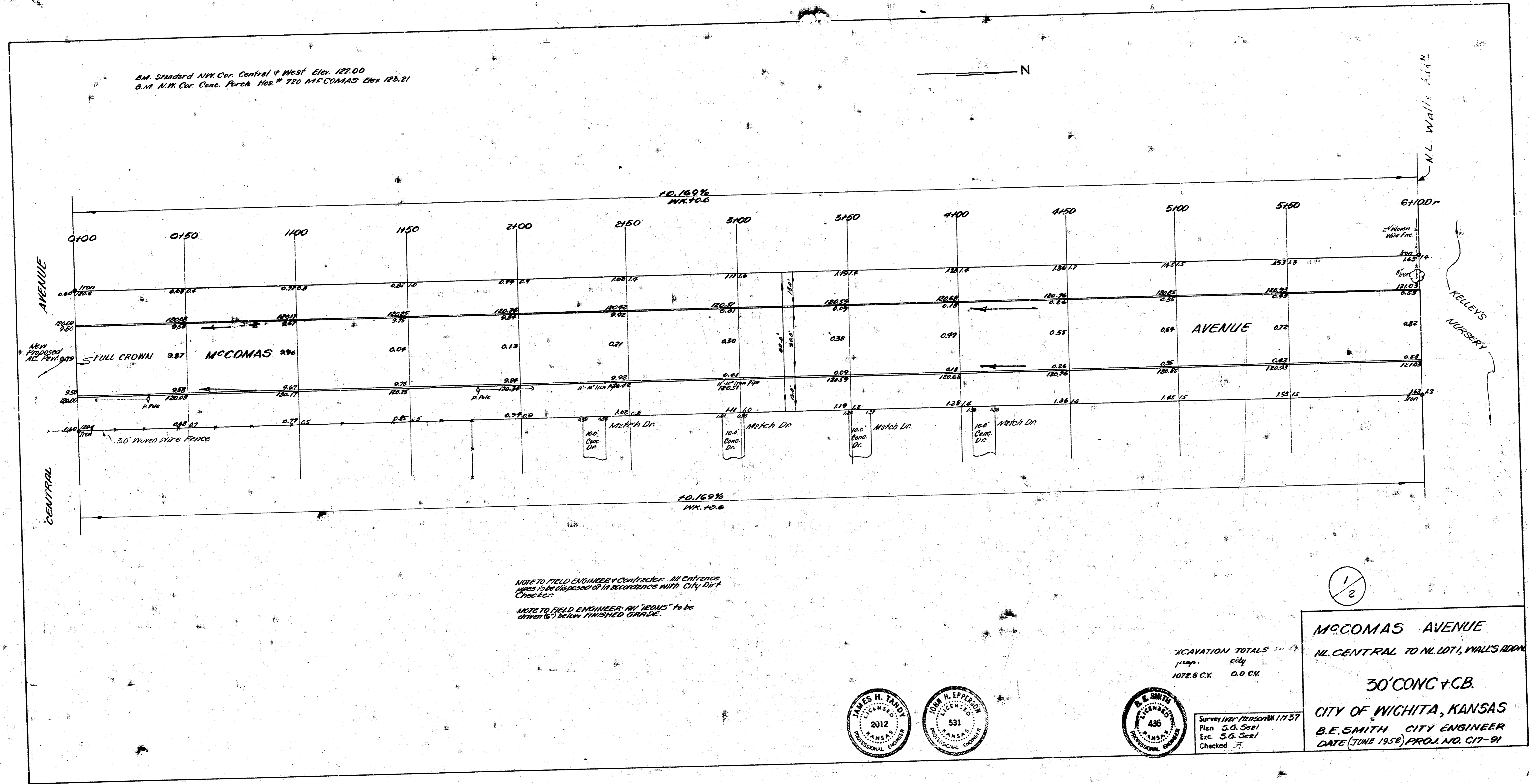
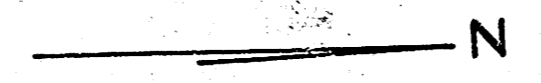
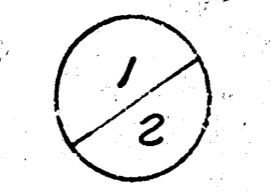


B.M. Standard N.W. Cor. Central + West Elev. 122.00
 B.M. N.W. Cor. Conc. Park Nos. 720 MCCOMAS Elev. 123.21



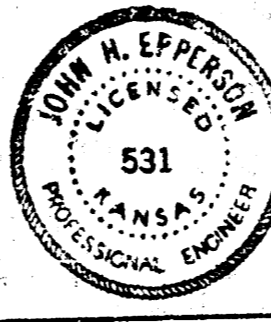
NOTE TO FIELD ENGINEER & CONTRACTOR: ALL CHANGES
 SHALL BE RECORDED IN ACCORDANCE WITH CITY DATA
 CHECK #27.

NOTE TO FIELD ENGINEER: ALL "POINTS" TO BE
 GIVEN TO BEFORE FINISHED GRADE.



MCCOMAS AVENUE
 N.W. CENTRAL TO N.W. 101, WALL'S ADDN
 30' CONC + C.B.
 CITY OF WICHITA, KANSAS
 B.E. SMITH CITY ENGINEER
 DATE (JUNE 1958) PROJ. NO. C17-91

EXCAVATION TOTALS 3'-11 1/2"
 114.0' CITY
 107.8' C.B. 0.0' C.B.



Survey for: Wilson 11/37
 Plan: S.C. 501
 Etc. S.C. 501
 Checked: 7