

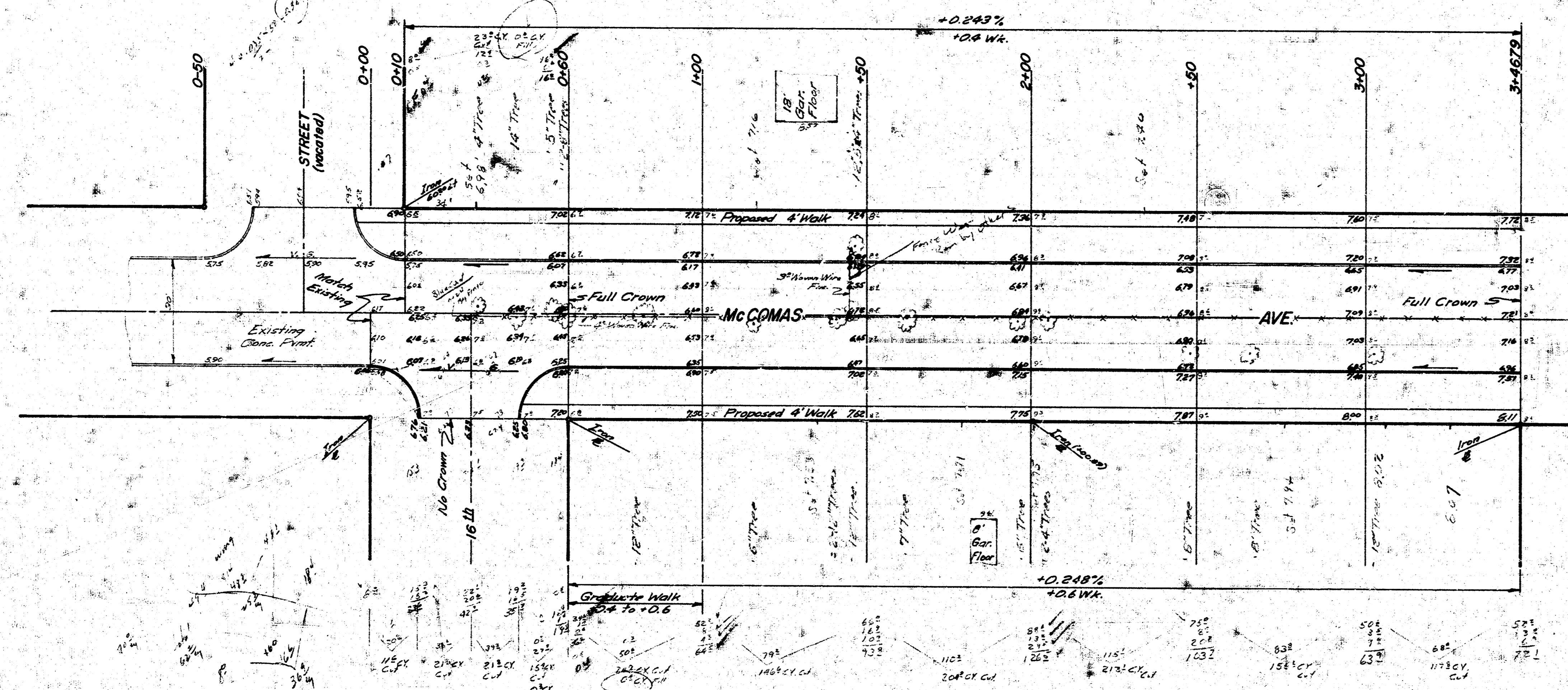
B.M. 18910 'M' in Mueller, Fire Plug,
NW 15th & McComas

B.M. 18905 'M' in Mueller, Fire Plug,
SW 15th & McComas



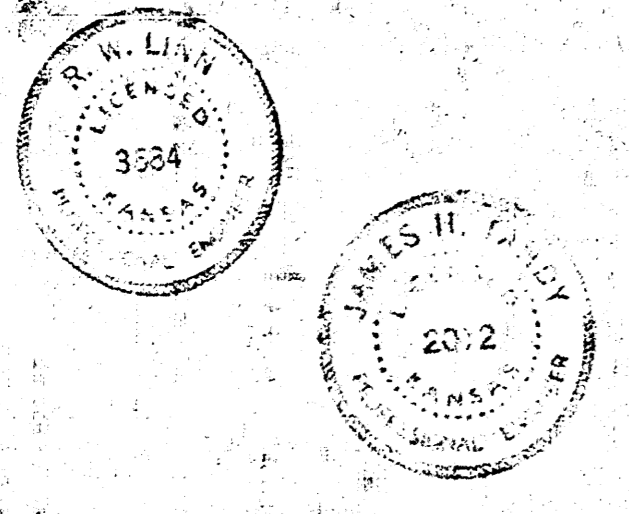
Baseline - E. Prop. Line, McComas Ave.

Survey
Plotted
Plan
Ex.
Chicago
5/1/67



NOTE: Grade and Clear Parking for Proposed
Sidewalk. Compact Fill to Sidewalk Area.
SIDEWALK TO BE CONSTRUCTED BY OTHERS.

| EARTHWORK QUANTITIES | | | |
|----------------------|-----------|----------|-----------|
| PROPERTY | | CITY | |
| Exc. | Comp/Fill | Exc. | Comp/Fill |
| 534.6 C.Y. | 700 C.Y. | 700 C.Y. | 0.2 C.Y. |
| 93.5 | 0.1 | 70.0 | 0.1 |
| TOTAL | 1228.1 | 770 C.Y. | 0.3 C.Y. |



McCOMAS AVENUE
From S.L. 16th STREET
To N.L. FLOYD MOORE ADDITION
30' CONCRETE
B.E. SMITH CITY ENGINEER
CITY OF WICHITA, KANSAS
DATE July 1967 C17-28



5-12-67