

B.M. 108.38 + on top of and N. Hubguard Lincoln St. Bridge

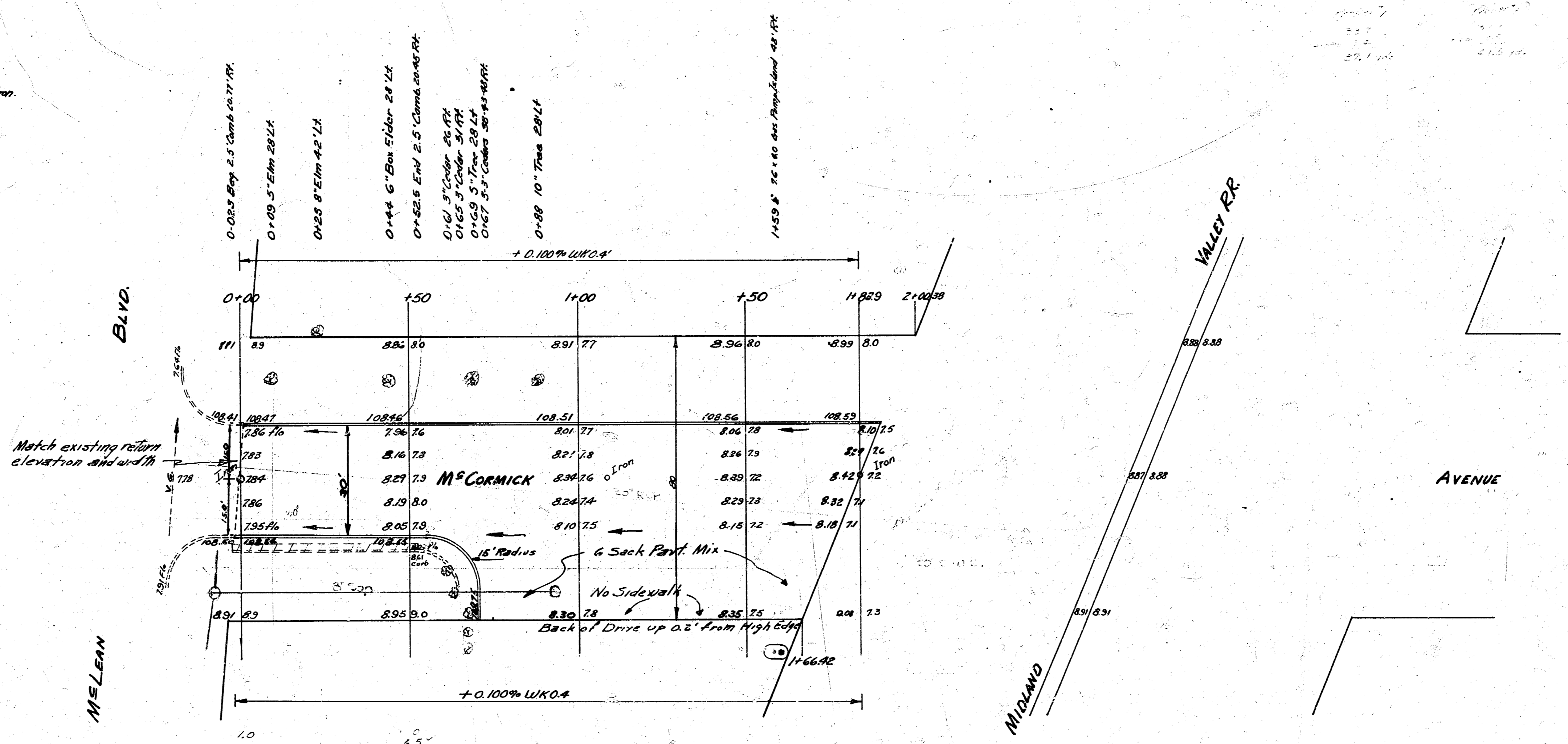
Stationing on E

Ties to J. in E McCormick & W.L. McLean
 5.45 E.N.E. to + in part on E west
 22.70 S.E. to + on top of curb
 23.60 N.E. to + on top of curb

Ties to witness iron on true E McCormick 25th W of E. W.M. imp.
 3.87 W to Edge E rail Midland Valley RR
 10.77 N.W. to Joint L. rail of RR

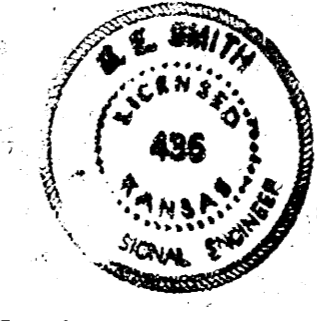
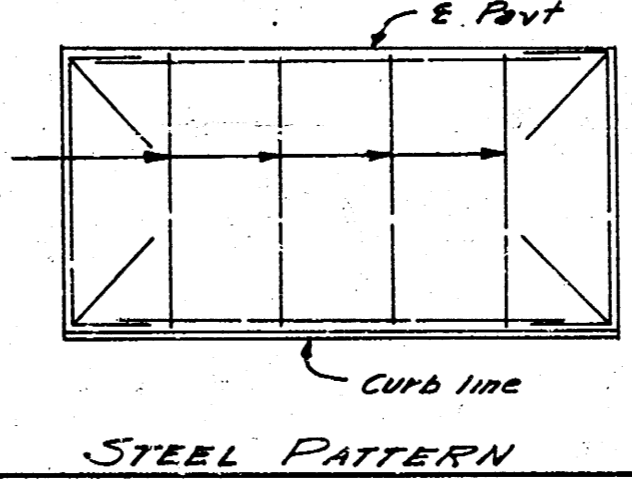
Survey
 Plan 25
 Exc. 25
 Proposed

Scale: 1" = 10'-0"



Match existing return elevation and width

Dist.	Dist.	Dist.	Dist.	Dist.
1.0	6.5	1.5	1.5	1.5
16.0	6.5	1.5	1.5	1.5
0	6.5	1.5	1.5	1.5
17.0	6.5	1.5	1.5	1.5



MCCORMICK
 W.L. McLEAN TO EL. MIDLAND VALLEY
 30' CONCRETE CURB
 CITY OF WICHITA
 B.E. SMITH CITY ENGINEER
 APRIL 1954 PROJECT C13-248