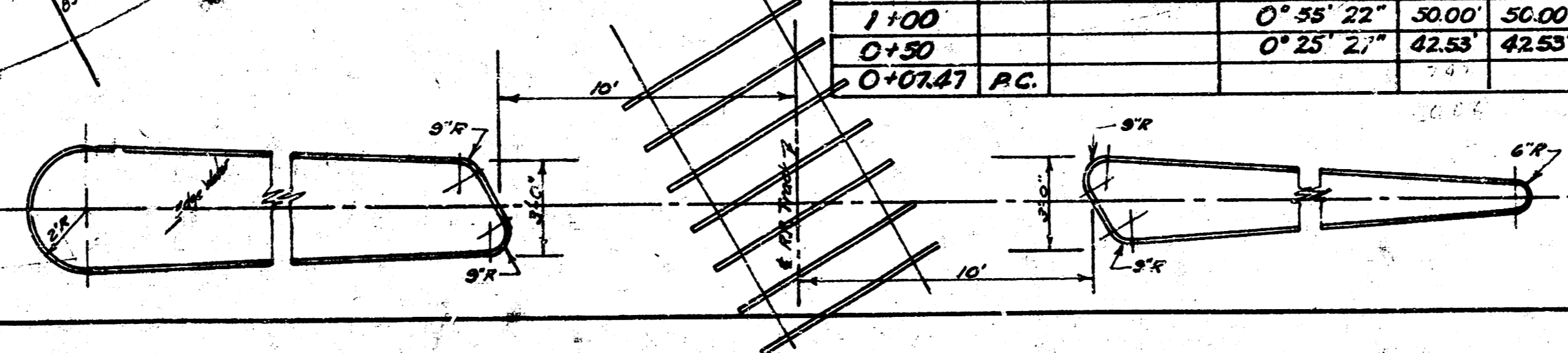


Base Line for curve data is 8.0' offset from face of west curb

Station	Point Alignment	Deflection	Chord	Arc
10+10.26	P.T.	10° 00'	10.26'	10.26'
10+100		9° 53' 52"	50.00'	50.00'
9+50		9° 53' 52"	50.00'	50.00'
9+00	$\Delta = 20° 00'$	6° 54' 02"	30.00'	30.00'
8+50	$D = 2° 00'$	6° 54' 07"	-	-
8+00	$R = 2872.78'$	7° 54' 12"	-	-
7+50	$T = 506.85'$	7° 24' 17"	-	-
7+00	$L = 1002.79'$	6° 54' 22"	-	-
6+50		6° 24' 27"	-	-
6+00		5° 54' 32"	-	-
5+50		5° 24' 37"	-	-
5+00		4° 54' 42"	-	-
4+50		4° 24' 47"	-	-
4+00		3° 54' 52"	-	-
3+50		3° 24' 57"	-	-
3+00		2° 55' 02"	-	-
2+50		2° 25' 07"	-	-
2+00		1° 55' 12"	-	-
1+50		1° 25' 17"	-	-
1+00		0° 55' 22"	30.00'	30.00'
0+50		0° 25' 27"	42.53'	42.53'
0+07.47	P.C.			

VOID, see revised sheet

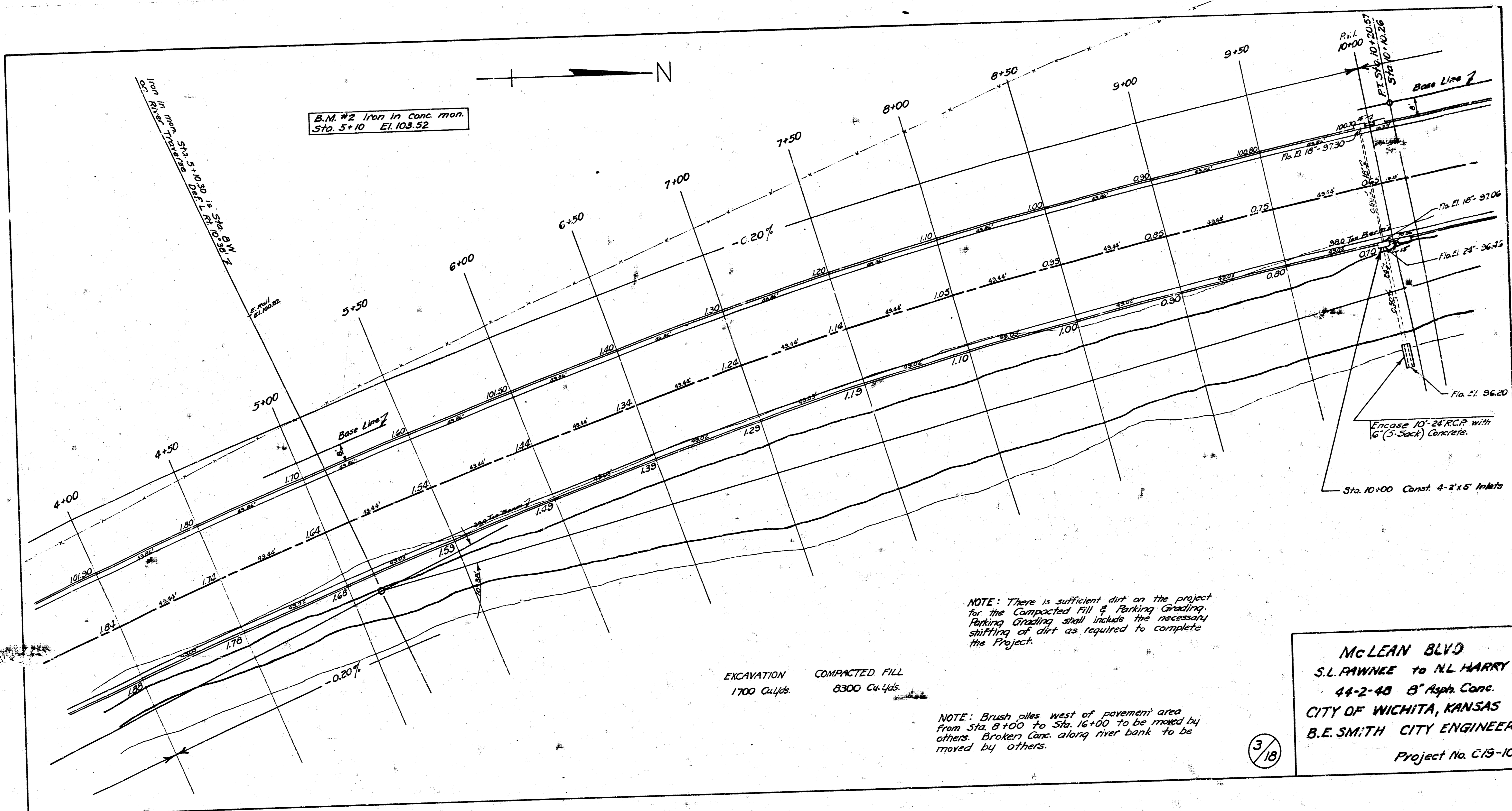
TRAFFIC ISLAND DETAILS
Also See Sheet No. 11



Sta. 0+00 on curve tan is face of Lt. curb line 48' Lt. & at 90° with river traverse line north from Sta. 7+00

Iron Sta. 0+00 is Sta. 7W on River Traverse Def. L. Rt. 11° 51'

El. 103.50 End of proposed bridge High Water El. 98.4



B.M. #2 Iron in Conc. mon.
Sta. 5+10 El. 103.52

EXCAVATION 1700 Cu.Yds.
COMPACTED FILL 8300 Cu.Yds.

NOTE: There is sufficient dirt on the project for the Compacted Fill & Parking Grading. Parking Grading shall include the necessary shifting of dirt as required to complete the Project.

NOTE: Brush piles west of pavement area from Sta. 8+00 to Sta. 16+00 to be moved by others. Broken Conc. along river bank to be moved by others.

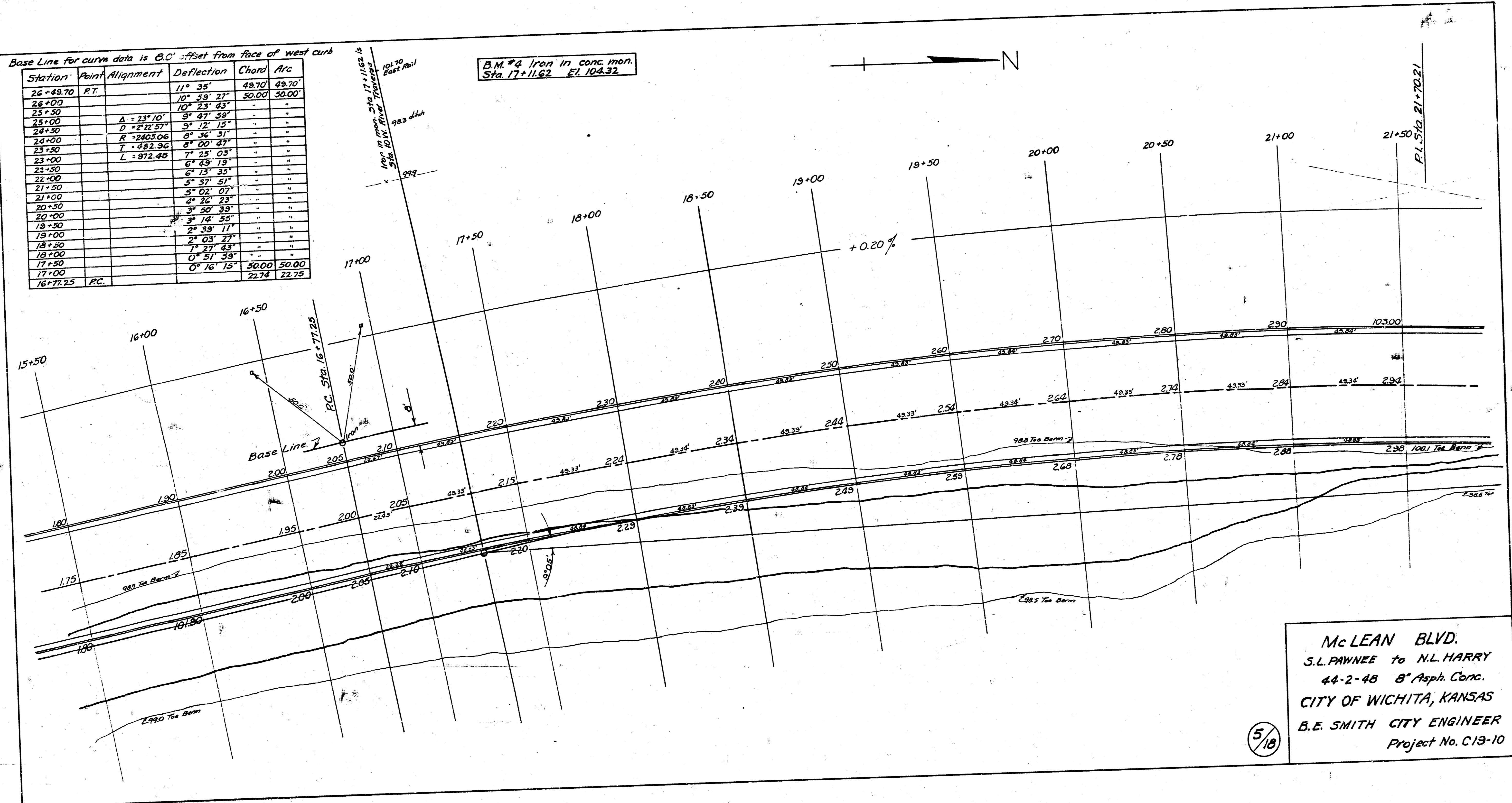
McLEAN BLVD
S.L. RAWNEE to N.L. HARRY
44-2-48 8" Asph. Conc.
CITY OF WICHITA, KANSAS
B.E. SMITH CITY ENGINEER
Project No. C19-10

3/18

Base Line for curve data is C.O. offset from face of west curb

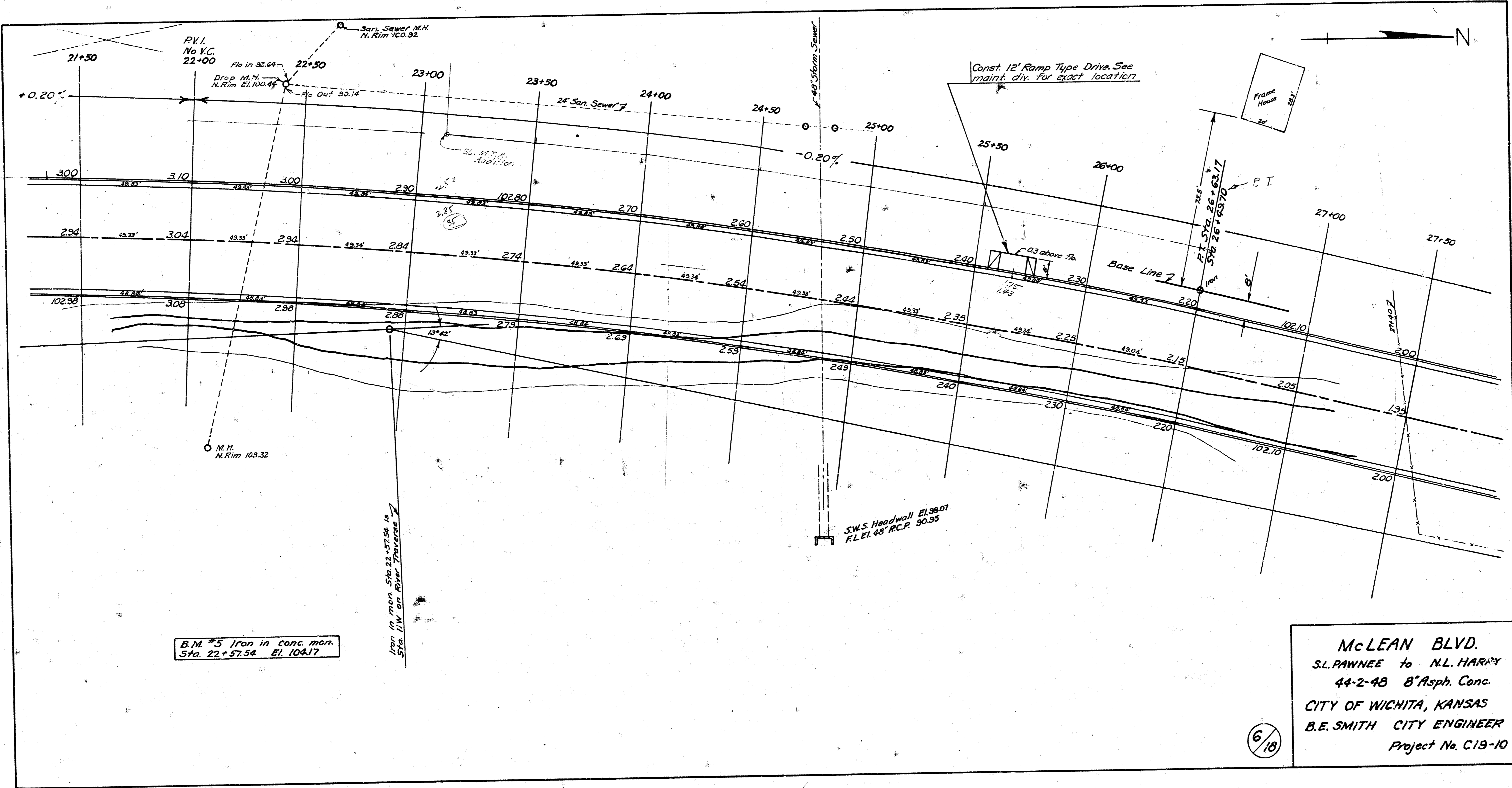
Station	Point	Alignment	Deflection	Chord	Arc
26+49.70	RT		11° 35'	49.70'	49.70'
25+50			10° 59' 27"	50.00'	50.00'
25+00			10° 23' 43"	"	"
24+50			9° 47' 59"	"	"
24+00			9° 12' 15"	"	"
23+30			8° 36' 31"	"	"
23+00			8° 00' 47"	"	"
22+50			7° 25' 03"	"	"
22+00			6° 49' 19"	"	"
21+50			6° 23' 35"	"	"
21+00			5° 47' 51"	"	"
21+00			5° 22' 07"	"	"
20+50			4° 46' 23"	"	"
20+00			4° 20' 39"	"	"
19+50			3° 44' 55"	"	"
19+00			3° 19' 11"	"	"
18+50			2° 43' 27"	"	"
18+00			2° 17' 43"	"	"
17+50			1° 41' 59"	"	"
17+00			1° 16' 15"	50.00'	50.00'
16+77.25	PC			22.74'	22.75'

B.M. #4 Iron in conc. mon.
Sta. 17+11.62 El. 104.32



McLEAN BLVD.
S.L. PAWNEE to N.L. HARRY
44-2-48 8" Asph. Conc.
CITY OF WICHITA, KANSAS
B.E. SMITH CITY ENGINEER
Project No. C13-10

5/10

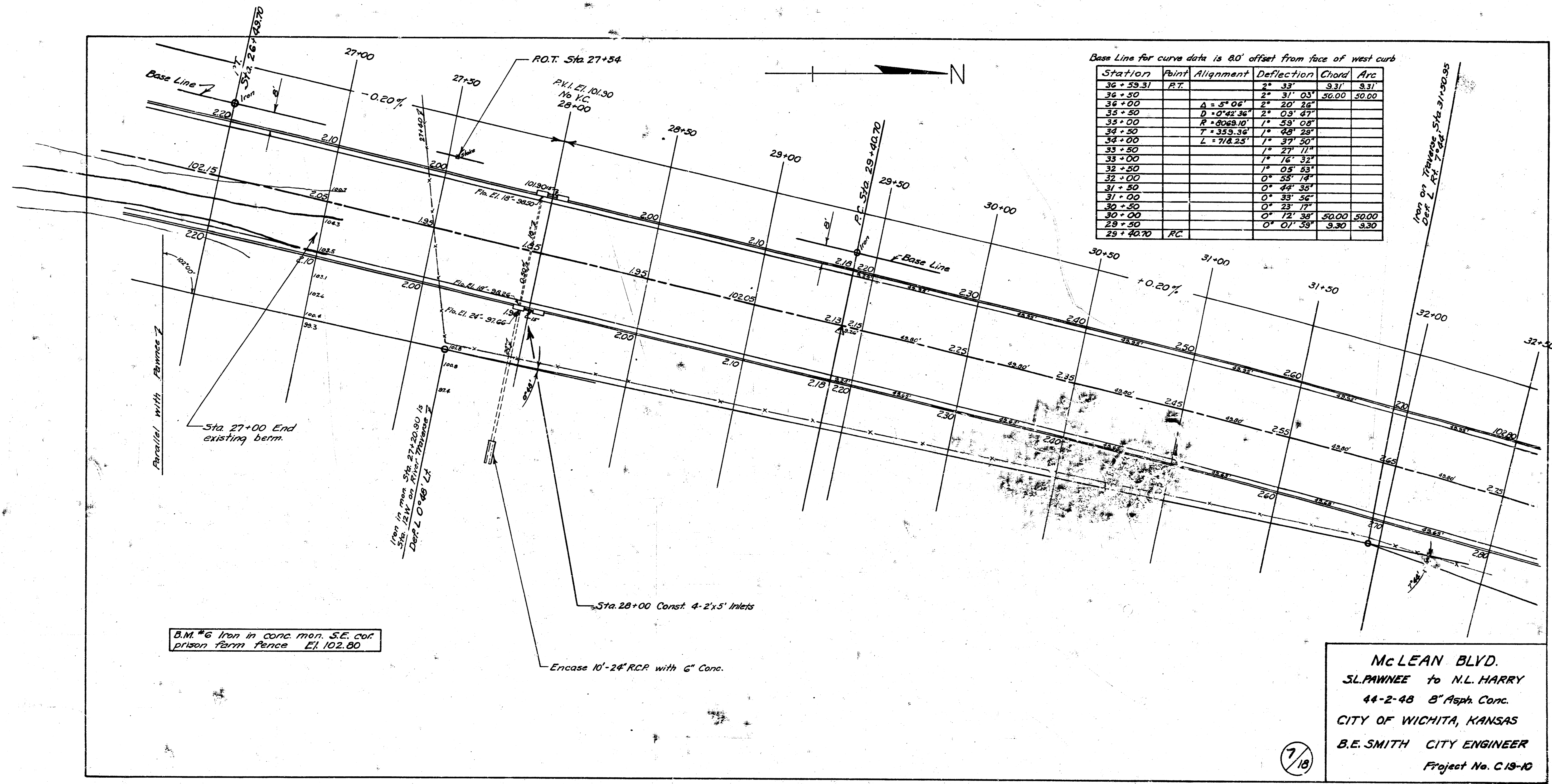


B.M. #5 Iron in conc. man.
Sta. 22+57.54 El. 104.17

Iron in man. Sta. 22+57.54 in
Sta. 117 on River Terrace

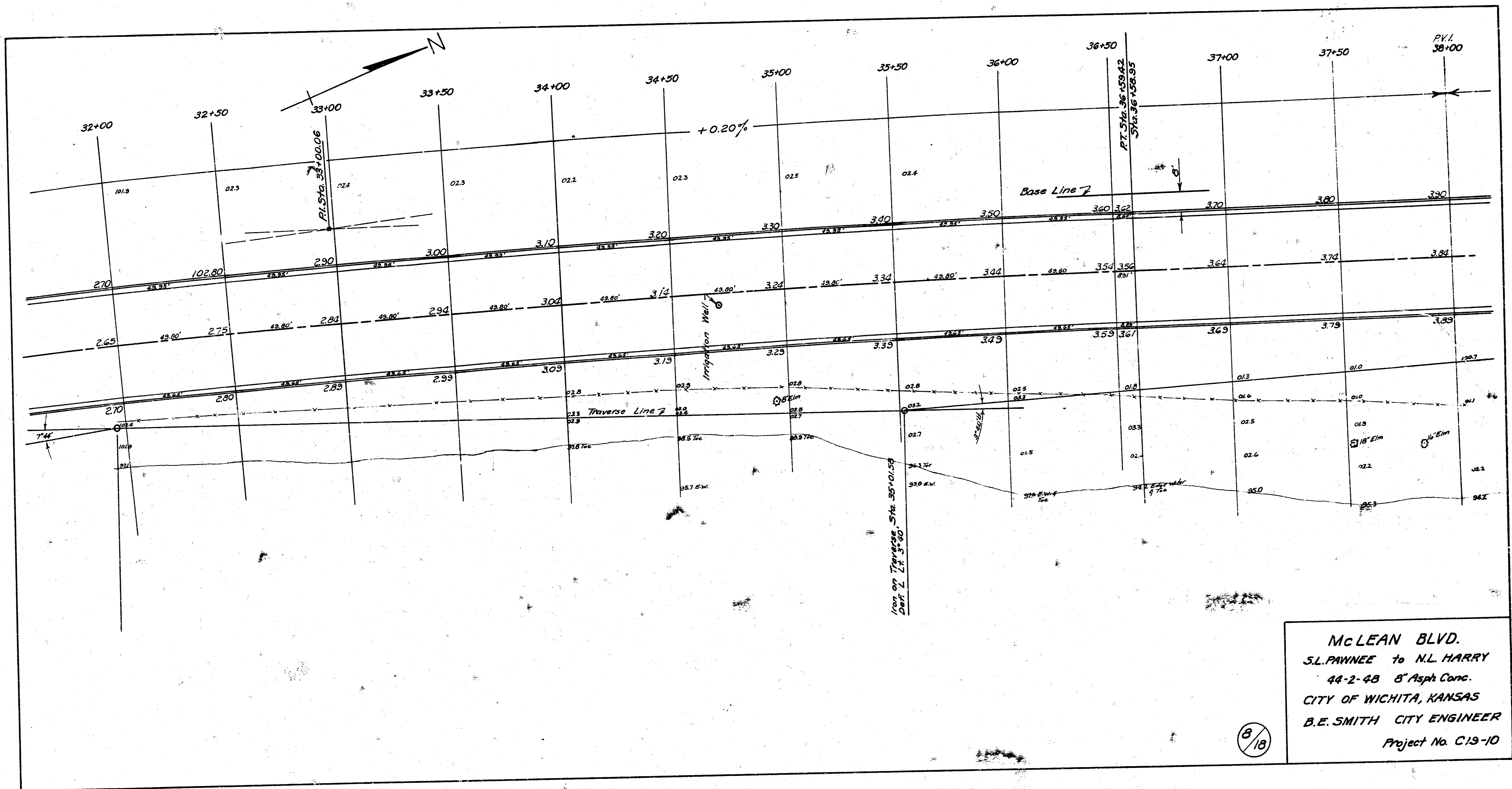
McLEAN BLVD.
S.L. PAWNEE to N.L. HARRY
44-2-48 8" Asph. Conc.
CITY OF WICHITA, KANSAS
B.E. SMITH CITY ENGINEER
Project No. C19-10

6/18



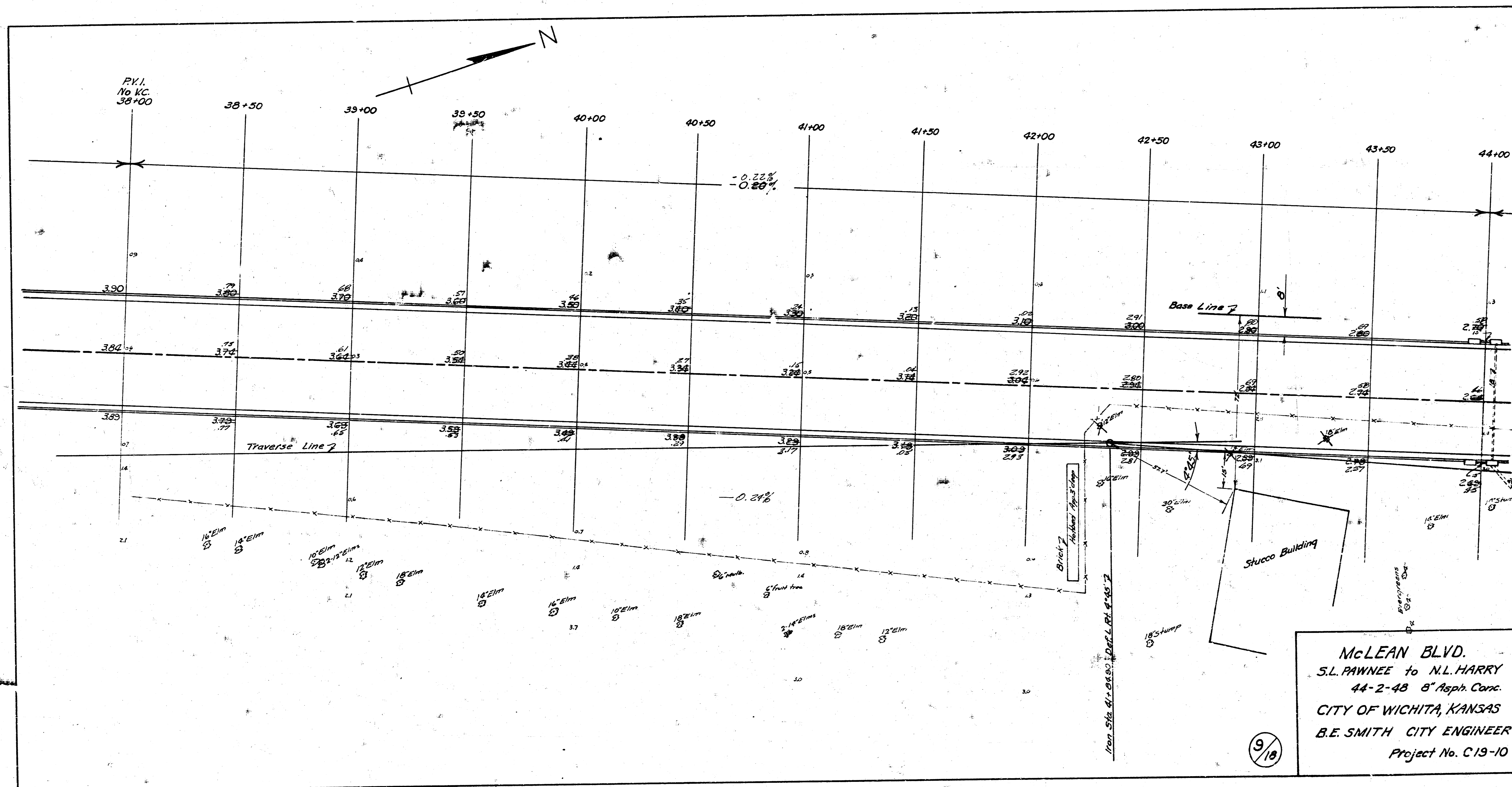
McLEAN BLVD.
 S.L. PAWNEE to N.L. HARRY
 44-2-48 8" Asph. Conc.
 CITY OF WICHITA, KANSAS
 B.E. SMITH CITY ENGINEER
 Project No. C.19-10

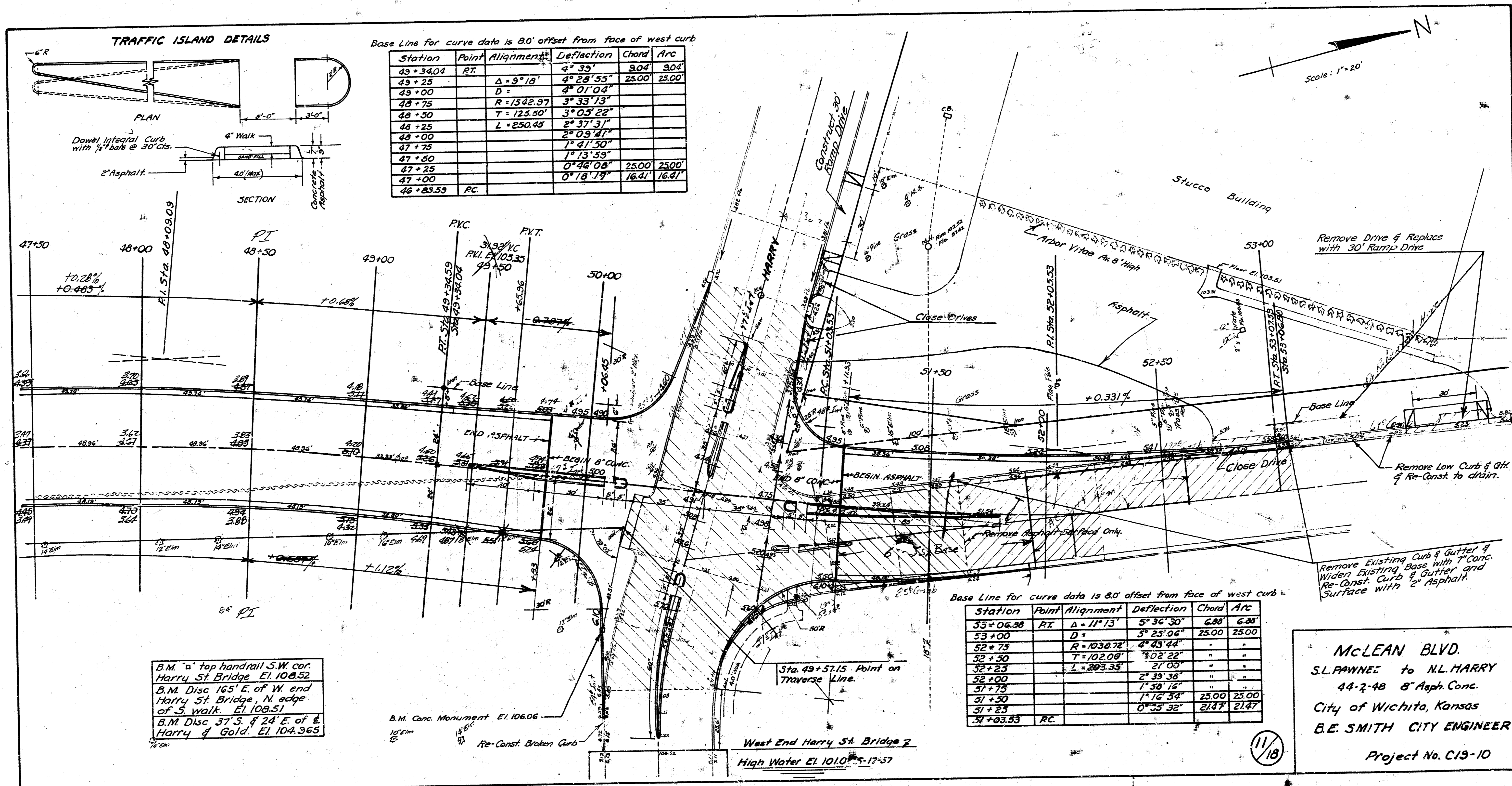
7/18



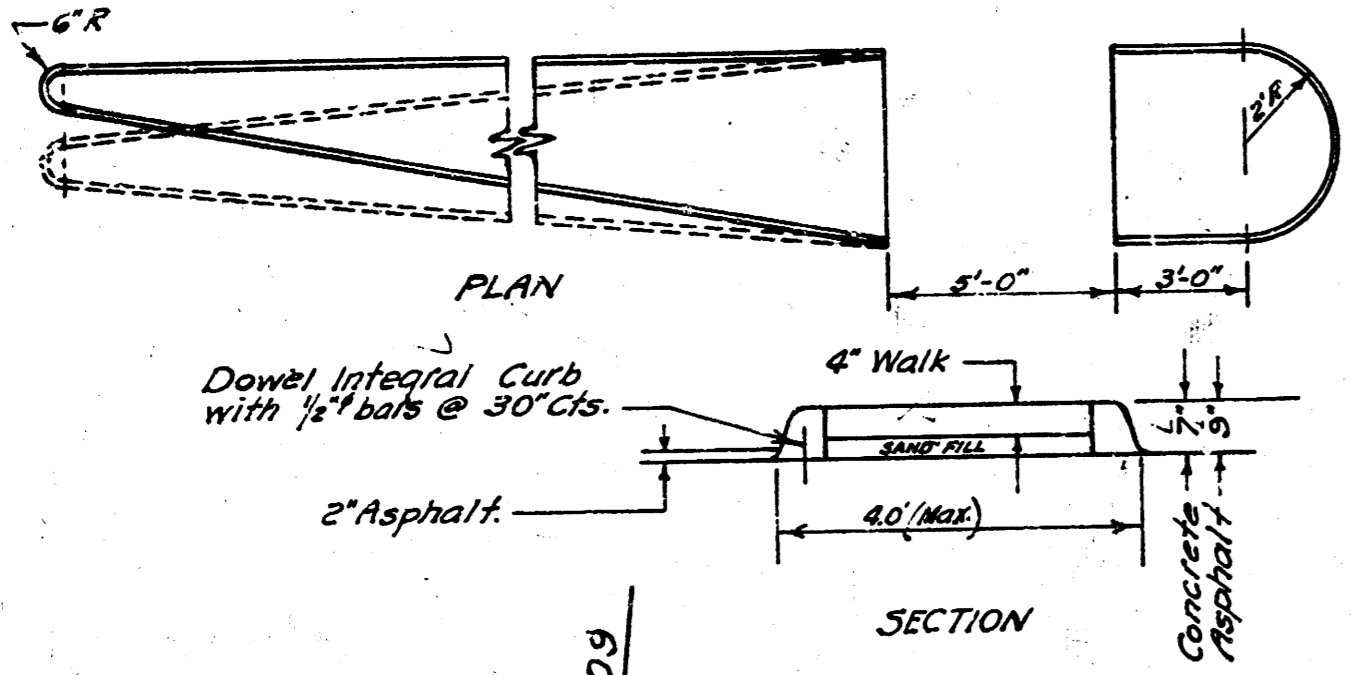
McLEAN BLVD.
 S.L. PAWNEE to N.L. HARRY
 44-2-48 8" Asph Conc.
 CITY OF WICHITA, KANSAS
 B.E. SMITH CITY ENGINEER
 Project No. C19-10

8/10





TRAFFIC ISLAND DETAILS



Base Line for curve data is 8.0' offset from face of west curb

Station	Point	Alignment	Deflection	Chord	Arc
49+34.04	RT		4° 33'	8.04	8.04
49+25		$\Delta = 9^{\circ} 18'$	4° 28' 55"	25.00	25.00
49+00		D =	4° 01' 04"		
48+75		$R = 1542.97$	3° 33' 13"		
48+50		$T = 125.50'$	3° 05' 22"		
48+25		$L = 250.45$	2° 37' 31"		
48+00			2° 09' 41"		
47+75			1° 41' 50"		
47+50			1° 13' 59"		
47+25			0° 46' 08"	25.00	25.00
47+00			0° 18' 19"	16.41	16.41
46+83.53	RC				

Base Line for curve data is 8.0' offset from face of west curb

Station	Point	Alignment	Deflection	Chord	Arc
53+06.58	RT		5° 36' 30"	6.88	6.88
53+00		$D =$	5° 25' 06"	25.00	25.00
52+75		$R = 1038.72$	4° 43' 44"		
52+50		$T = 102.00'$	4° 02' 22"		
52+25		$L = 203.35'$	3° 20' 00"		
52+00			2° 39' 38"		
51+75			1° 58' 16"		
51+50			1° 16' 54"	25.00	25.00
51+25			0° 35' 32"	21.47	21.47
51+03.53	RC				

B.M. "a" top handrail S.W. cor. Harry St Bridge El. 106.52
 B.M. Disc 165' E. of W. end Harry St Bridge N. edge of S. Walk El. 108.51
 B.M. Disc 37' S. & 24' E. of E. Harry & Gold El. 104.365

B.M. Conc. Monument El. 106.06
 102m
 Re-Const. Broken Curb

West End Harry St Bridge 2
 High Water El. 101.0 5-17-57

McLEAN BLVD.
 S.L. PAWNEE to N.L. HARRY
 44-2-48 8" Asph. Conc.
 City of Wichita, Kansas
 B.E. SMITH CITY ENGINEER
 Project No. C19-10

11/18