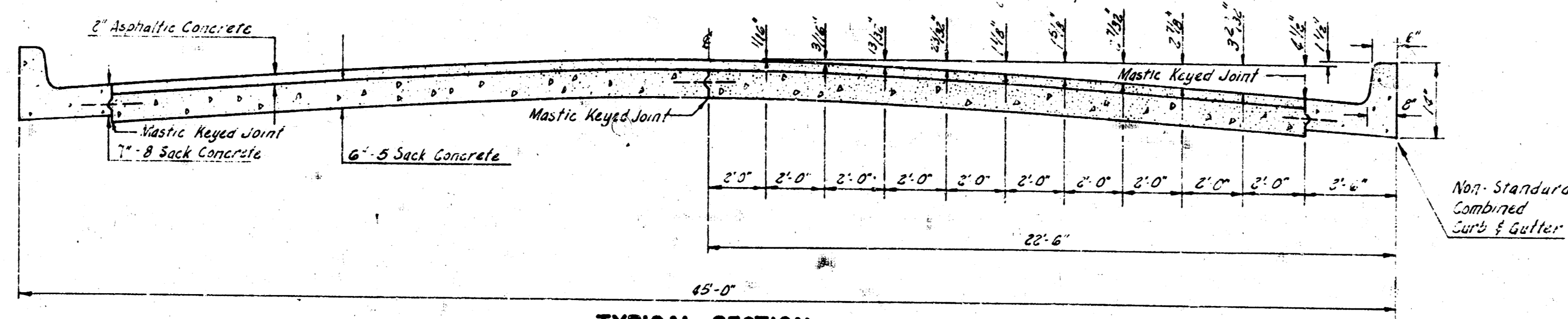
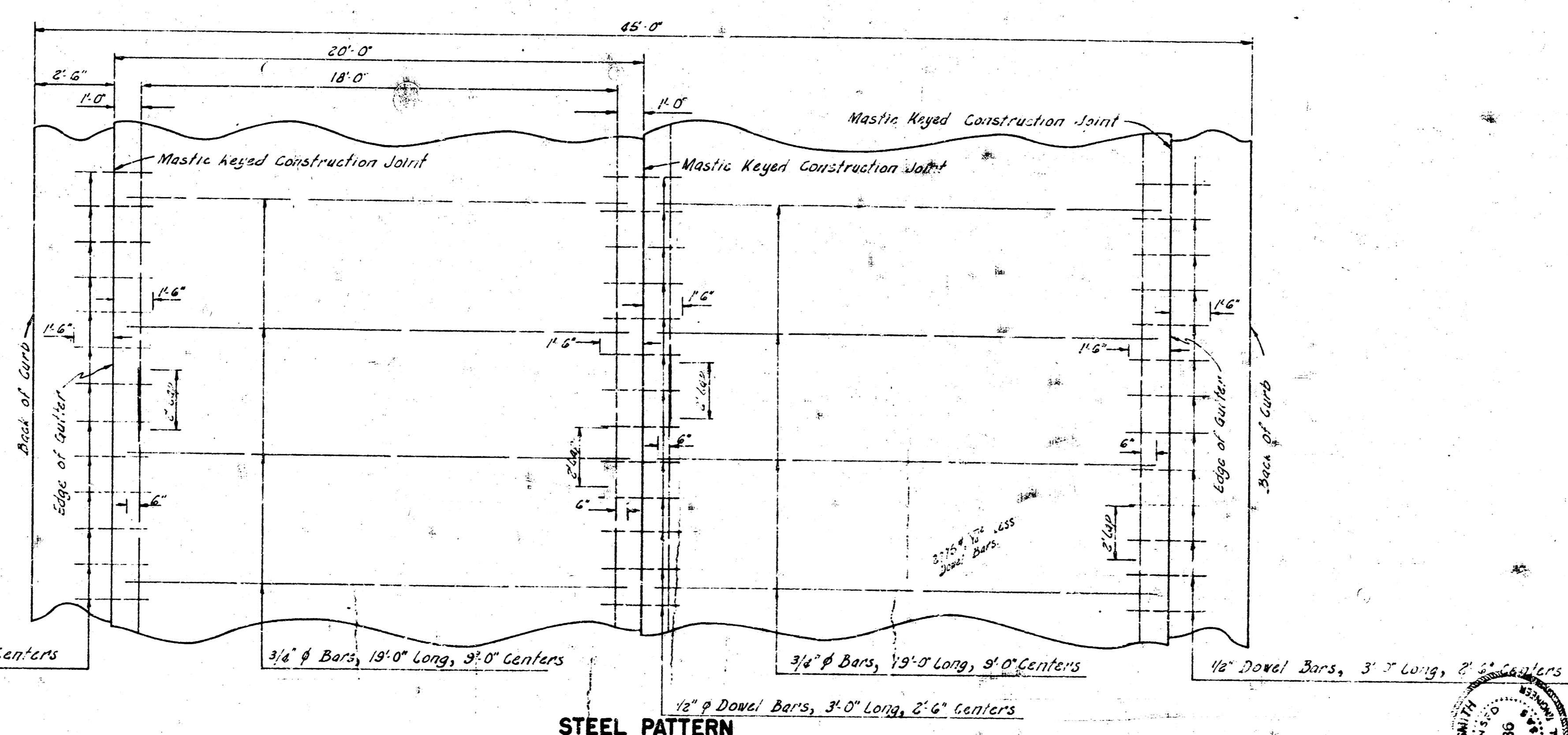


MCLEAN BOULEVARD
 S.L. CENTRAL - NL NINTH STR.
 C 18-35



TYPICAL SECTION
 NOT TO SCALE



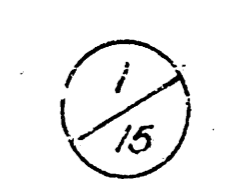
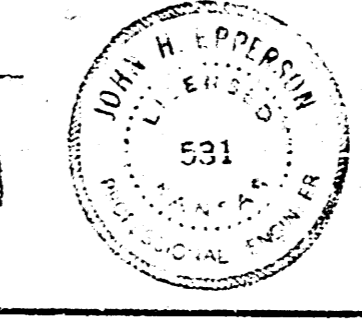
STEEL PATTERN
 NOT TO SCALE
 USE 3/4" Ø BARS EXCEPT WHERE NOTED

1/2" Ø Dowel Bars, 3'-0" Long, 2'-6" Centers

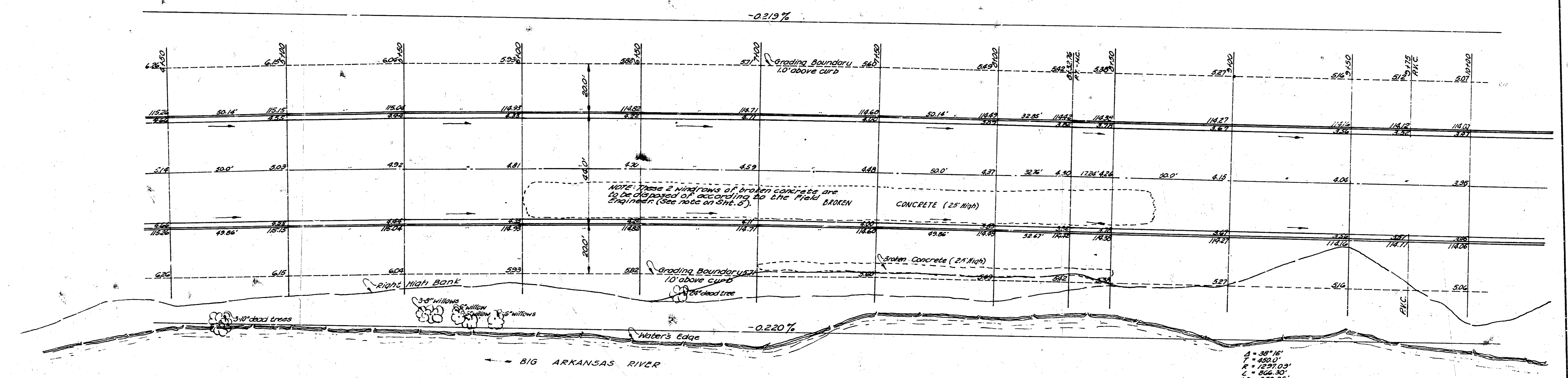
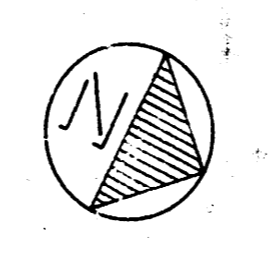
3/4" Ø Bars, 19'-0" Long, 9'-0" Centers

1/2" Ø Dowel Bars, 3'-0" Long, 2'-6" Centers

3/4" Ø Bars, 19'-0" Long, 9'-0" Centers



4417785 2X 1/18
 S. H. PETERSON
 Civil Engineer, State of California



$\Delta = 5.51'$
 $T = 200.0'$
 $P = 794.55'$
 $L = 129.55'$
 $\text{defl. per } 1' = 0.21628'$

14 40.92
 832.76
 458.66

CURVE DATA Based on Center-Line MFLCAN Road 704125' & 2' 53'

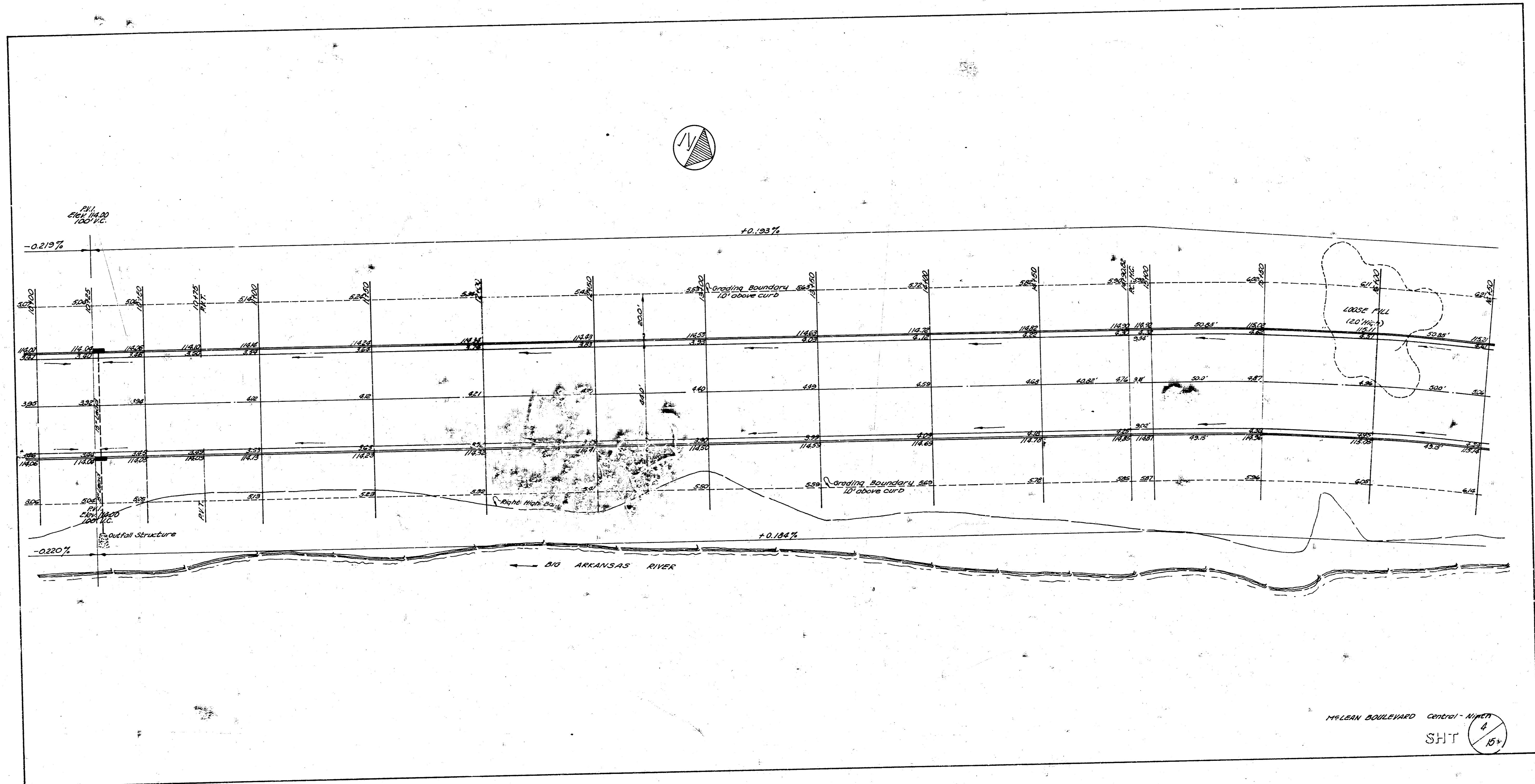
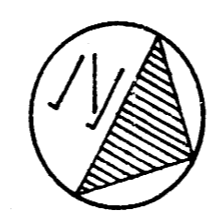
STATION	ARC LENGTH	CHORD LENGTH	CHORD BEHIND CURB	CHORD AHEAD CURB	REFLECTION	TOTAL DEFLECTION
4182.81	-	-	-	-	0° 00' 00"	0° 00' 30"
1500	17.19'	17.40'	17.24'	-	0° 03' 43"	0° 04' 42"
5100.0	50.00'	49.81"	50.19'	-	0° 10' 43"	0° 14' 38"
1500	-	-	-	-	-	0° 35' 21"
6100.0	-	-	-	-	-	0° 36' 10"
1500	-	-	-	-	-	0° 46' 59"
7100.0	-	-	-	-	-	0° 57' 48"
1500	-	-	-	-	-	1° 08' 37"
8100.0	50.00'	49.81"	50.19'	-	0° 10' 43"	1° 19' 26"
132.76	32.76'	32.62"	32.86'	-	0° 07' 08"	1° 26' 31"

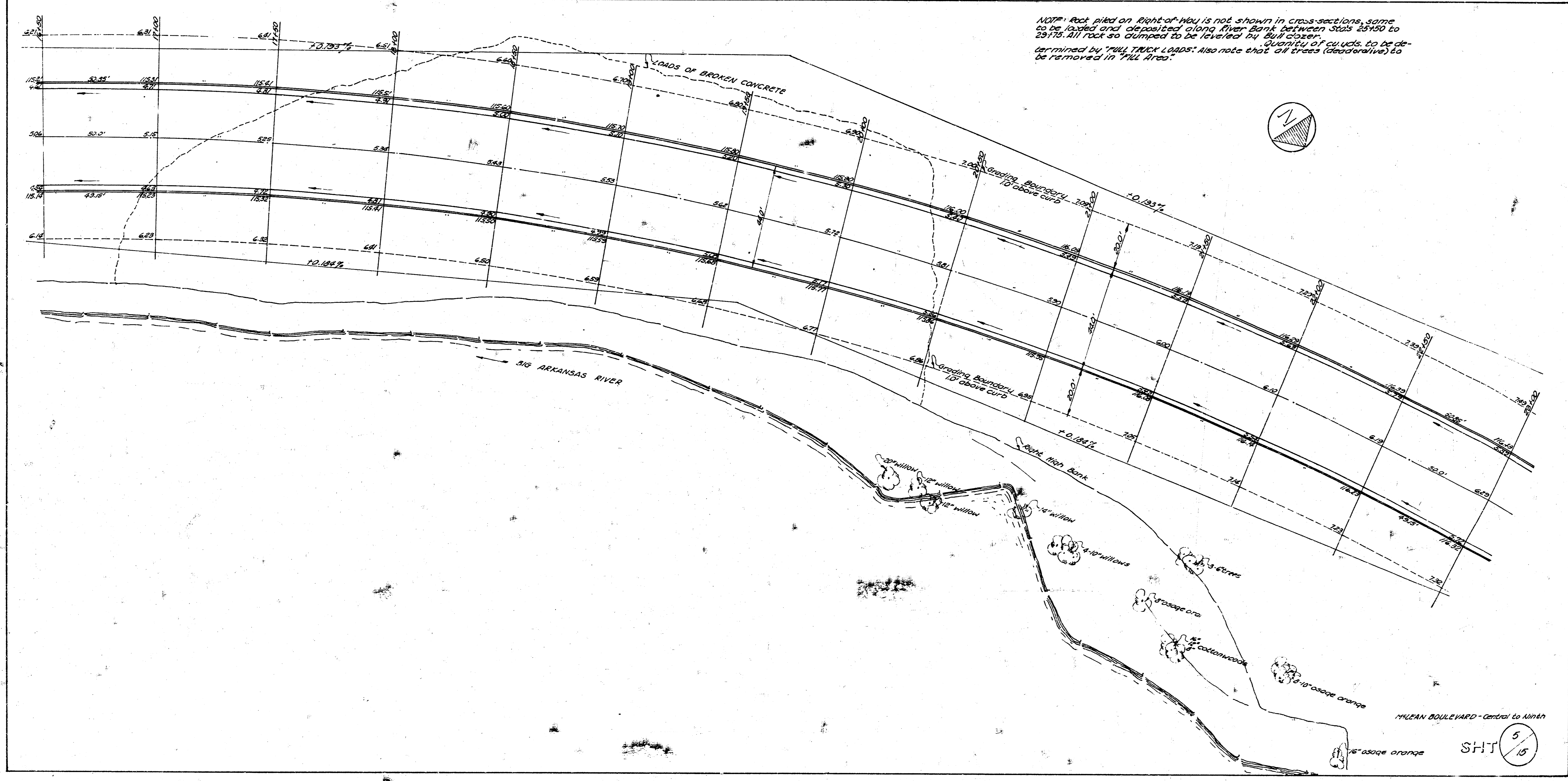
CURVE DATA Based on Center-Line MFLCAN Road 1297.00' & 35' 16"

STATION	ARC LENGTH	CHORD LENGTH	CHORD BEHIND CURB	CHORD AHEAD CURB	REFLECTION	TOTAL DEFLECTION
1153.88	-	-	-	-	0° 00' 00"	0° 00' 00"
13100.0	9.14'	8.97'	9.38'	-	0° 02' 10"	0° 02' 10"
1500	50.0'	49.82"	50.18'	-	0° 10' 43"	0° 14' 26"
16100.0	-	-	-	-	-	0° 35' 21"
17500	-	-	-	-	-	0° 37' 16"
17100.0	-	-	-	-	-	0° 43' 30"
1500	-	-	-	-	-	0° 57' 48"
18100.0	-	-	-	-	-	1° 08' 37"
1500	-	-	-	-	-	1° 14' 26"
19100.0	-	-	-	-	-	1° 17' 50"
1500	-	-	-	-	-	1° 26' 31"
20100.0	-	-	-	-	-	1° 35' 06"
1500	-	-	-	-	-	1° 43' 58"
21100.0	-	-	-	-	-	1° 53' 38"
1500	-	-	-	-	-	2° 03' 54"
22100.0	-	-	-	-	-	2° 14' 57"
1500	-	-	-	-	-	2° 26' 10"
23100.0	30.0'	29.88"	30.14'	-	0° 06' 18"	2° 32' 52"
15.10	37.10'	36.76"	37.60'	-	0° 18' 30"	2° 39' 06"

SHT 3/15

MFLCAN BULLEWAR - Center-Line

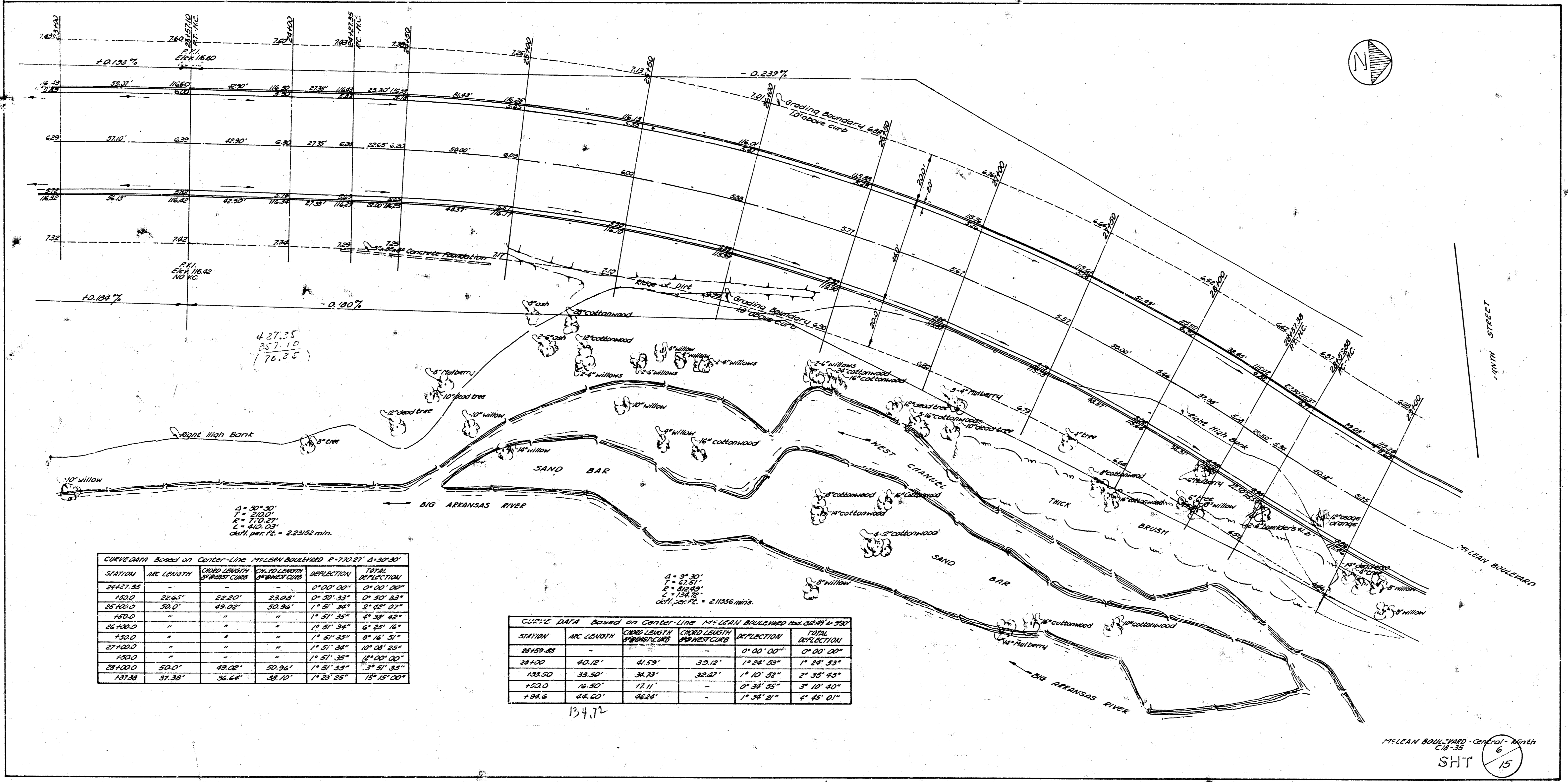




NOTE: Rock piled on Right-of-Way is not shown in cross-sections, some to be loaded and deposited along River Bank between Stas 28100 to 29175. All rock so dumped to be leveled by Bull dozer. Quantity of Cuts to be determined by "FULL TRUCK LOADS". Also note that all trees (cedar, etc.) to be removed in "Full Area".

HELAN BOULEVARD - Central to Minn

SHT 5/15



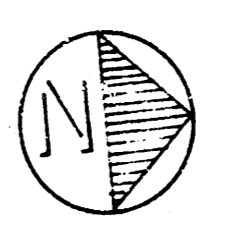
$\Delta = 30^{\circ} 30'$
 $T = 210.0'$
 $R = 510.25'$
 $C = 410.03'$
 $\text{defl. per } 100' = 2.2152 \text{ min.}$

CURVE DATA BASED ON CENTER-LINE McLEAN BOULEVARD R-770277 3-30-00					
STATION	ARC LENGTH	CORD LENGTH BY RADII	CHORD LENGTH BY ANGLES	DEFLECTION	TOTAL DEFLECTION
24427.35	-	-	-	0° 00' 00"	0° 00' 00"
1500	22.65'	22.60'	23.03'	0° 30' 33"	0° 30' 33"
25100.0	30.0'	29.96'	30.36'	1° 31' 34"	2° 02' 07"
1500	-	-	-	1° 31' 35"	3° 33' 42"
26100.0	-	-	-	1° 31' 34"	5° 05' 16"
1500	-	-	-	1° 31' 35"	6° 36' 51"
27100.0	-	-	-	1° 31' 34"	8° 08' 25"
1500	-	-	-	1° 31' 35"	9° 40' 00"
28100.0	50.0'	49.82'	50.36'	1° 31' 35"	11° 11' 35"
137.38	37.38'	36.64'	37.17'	1° 31' 25"	12° 43' 00"

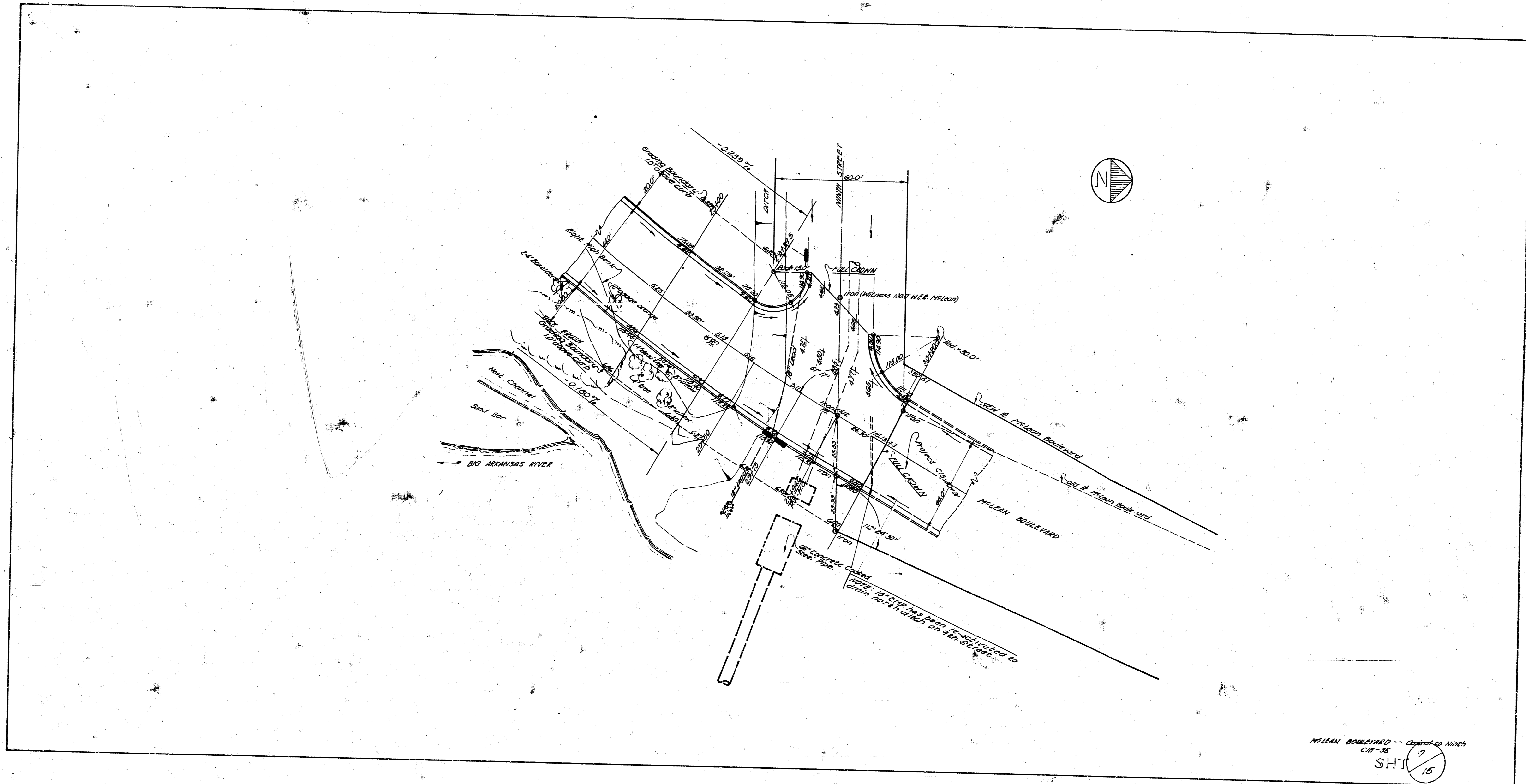
$\Delta = 31^{\circ} 30'$
 $T = 210.0'$
 $R = 510.25'$
 $C = 410.03'$
 $\text{defl. per } 100' = 2.1556 \text{ min.}$

CURVE DATA BASED ON CENTER-LINE McLEAN BOULEVARD R-770277 3-30-00					
STATION	ARC LENGTH	CORD LENGTH BY RADII	CHORD LENGTH BY ANGLES	DEFLECTION	TOTAL DEFLECTION
28100.0	-	-	-	0° 00' 00"	0° 00' 00"
29100	40.12'	41.59'	39.12'	1° 24' 33"	1° 24' 33"
135.50	33.50'	34.73'	32.62'	1° 10' 32"	2° 35' 05"
132.0	14.50'	17.11'	-	0° 34' 35"	3° 10' 40"
134.6	66.60'	66.64'	-	1° 34' 31"	4° 45' 01"

134.72

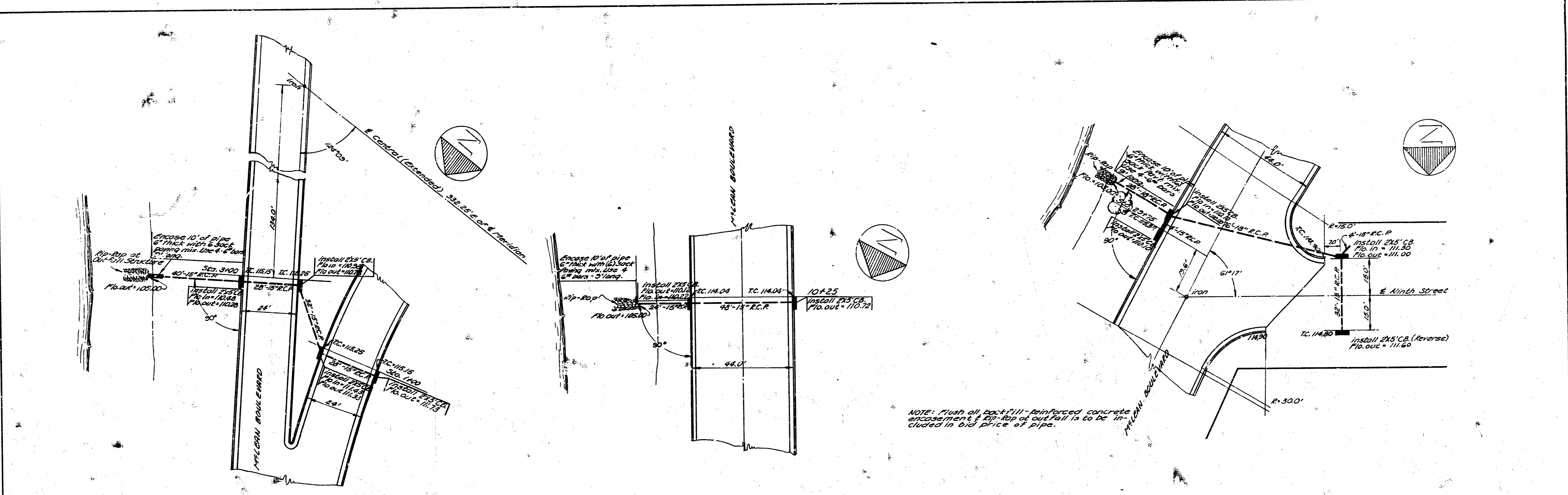


McLEAN BOULEVARD - Central - North
 C-8-33
 SHT 15

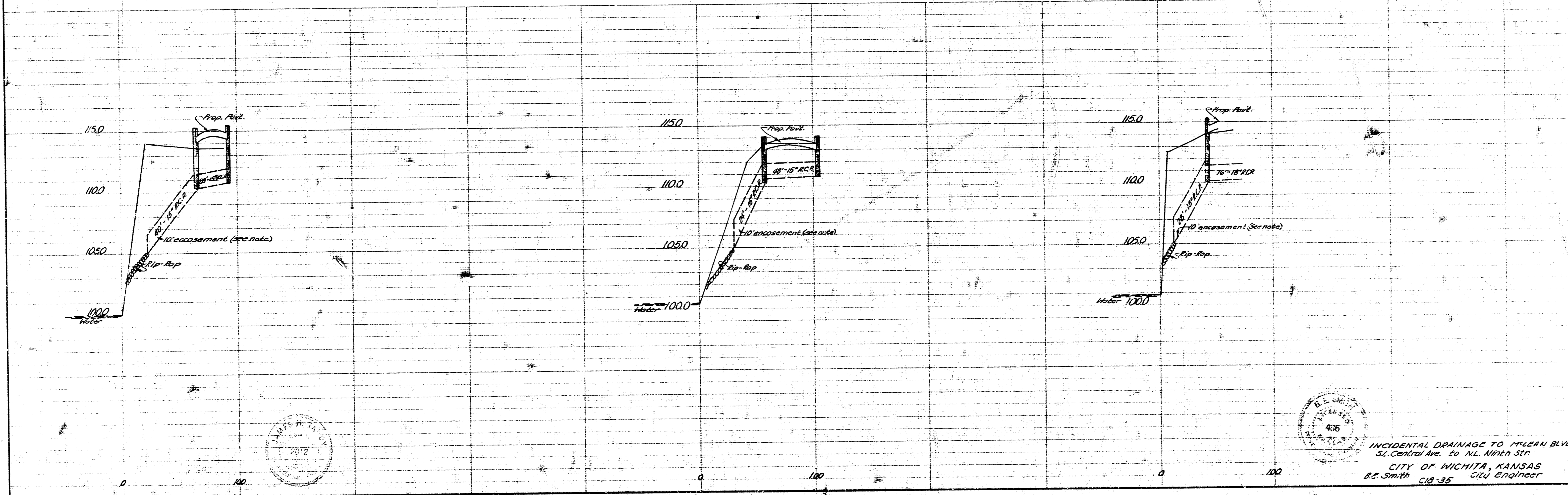


McLEAN BOULEVARD - 1/2" = 1' - 1/2" Scale
 C-11-35
 SHT 15

ASST. S. SMITH ET. 195-1



21. 11. 16. 75 S.M. On con. for 44" Meter Main @ 9th St. & 11th St. 11. 16. 39 Sp. Co. 11th St. Demands - 100' S. St. 4th Street



INCIDENTAL DRAINAGE TO MILLEN BLVD.
SE. Central Ave. to N. Ninth St.
CITY OF WICHITA, KANSAS
S. Smith C.E. 35 City Engineer