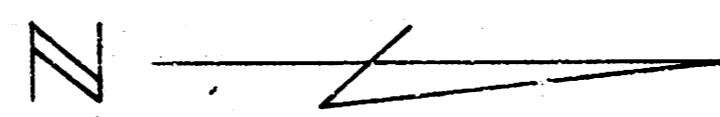
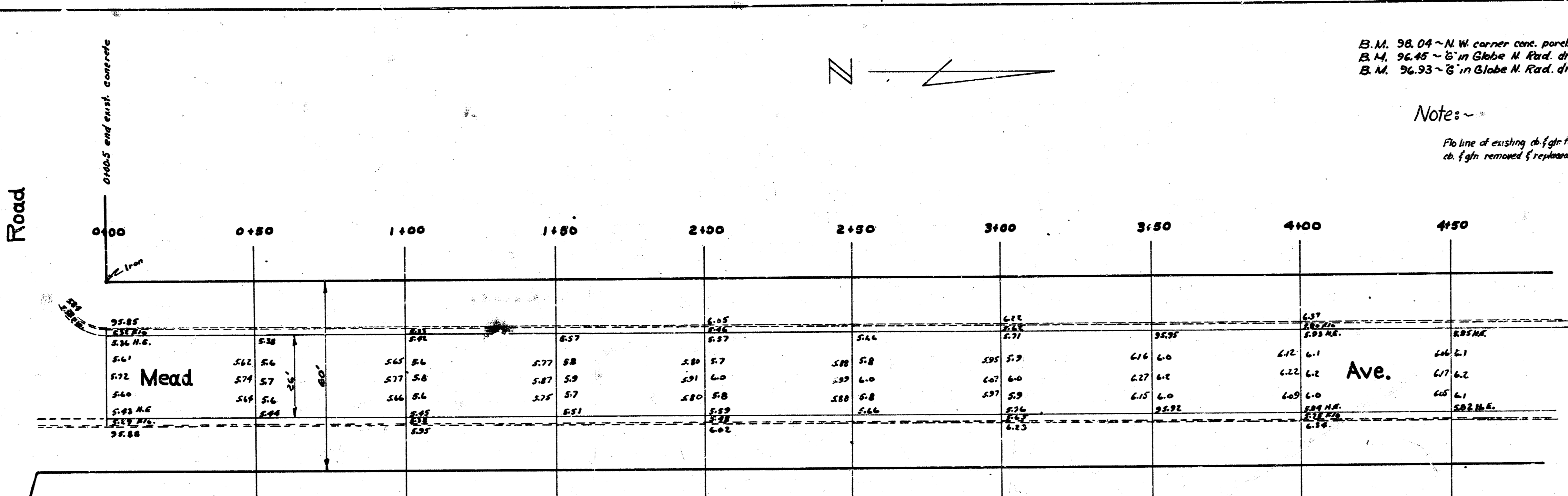


M.S.B.  
A



B.M. 98.04 ~ N.W. corner conc. porch Ho. 2602 S. Mead  
 B.M. 96.45 ~ E. in Globe N. Rad. drive of Ho. 2521 Mead.  
 B.M. 96.93 ~ E. in Globe N. Rad. drive return, 2451 Mead.

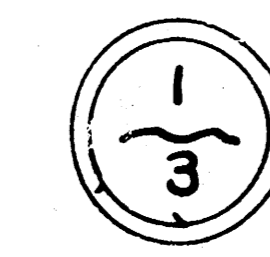
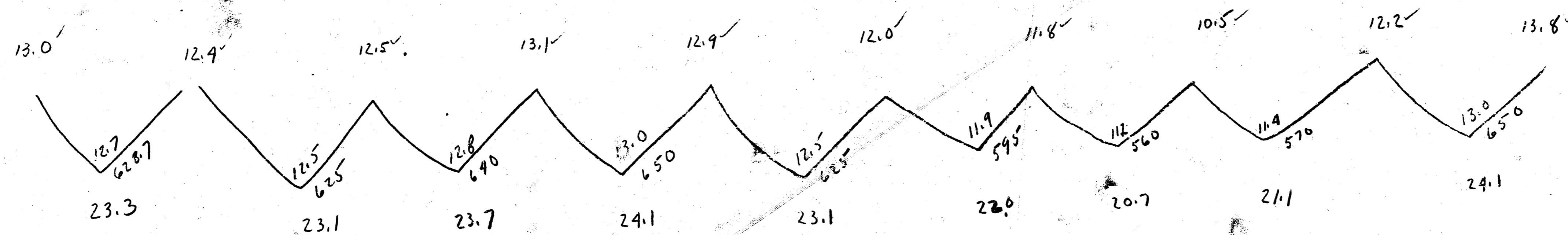
Note: ~  
 Pio line of existing ch. f.g. to be checked in field if  
 ch. f.g. removed & replaced where necessary.



Property

|              |
|--------------|
| 23.3         |
| 23.1         |
| 23.7         |
| 24.1         |
| 23.1         |
| 22.0         |
| 20.7         |
| 21.1         |
| 24.1         |
| 20.52        |
| +10.90       |
| 2257 cu yds. |

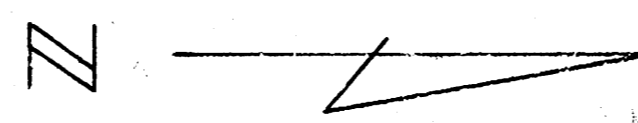
Marion



Mead Ave.  
 N.L. Marion Rd. to S.L. Pawnee  
 26' Concrete  
 City of Wichita, Kansas  
 L. K. White ~ City Engineer  
 Nov. 1950 Prof. C10-131

Note:—  
 No line of existing cb. f. gtr. to be checked in field  
 f. cb. f. gtr. removed / replaced where necessary.

B.M. 98.04 ~ N.W. corner conc. porch No. 2402 S. Mead.  
 B.M. 96.95 ~ 8" in Globe N. Rod drive of No. 2421 Mead.  
 B.M. 96.93 ~ 6" in Globe N. Rod drive return 2451 Mead.



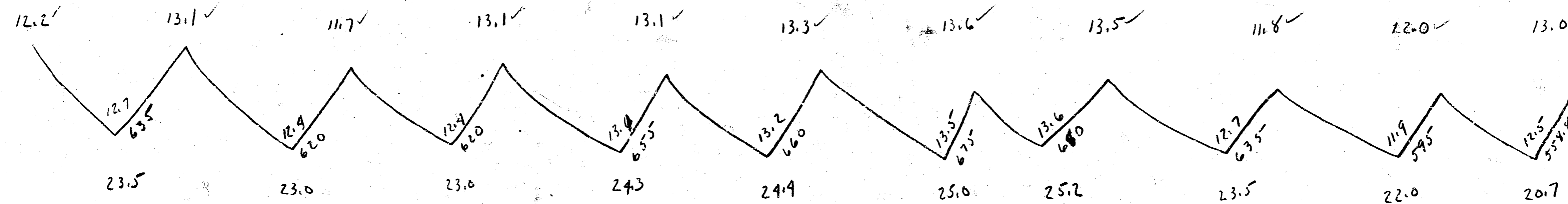
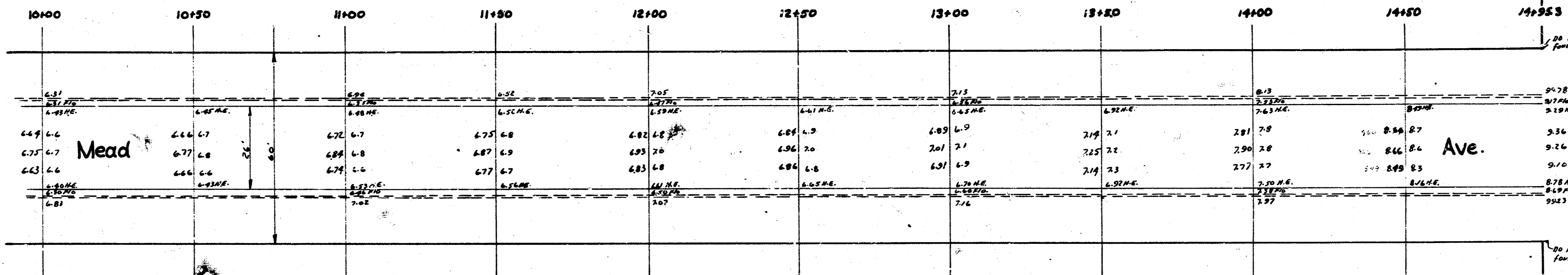
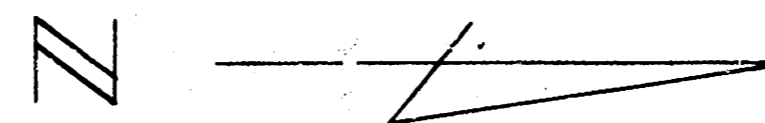
| 4+50  | 5+00  | 5+50  | 6+00  | 6+50  | 7+00  | 7+50  | 8+00  | 8+50  | 9+00  | 9+50  | 10+00 |
|---|-------|-------|-------|-------|-------|-------|-------|-------|-------|-------|-------|
| <div style="display: flex; justify-content: space-between;"> <span>MEAD</span> <span>Ave.</span> </div> |       |       |       |       |       |       |       |       |       |       |       |
| 6.06  | 6.17  | 6.27  | 6.37  | 6.47  | 6.57  | 6.67  | 6.77  | 6.87  | 6.97  | 7.07  | 7.17  |
| 6.13  | 6.23  | 6.33  | 6.43  | 6.53  | 6.63  | 6.73  | 6.83  | 6.93  | 7.03  | 7.13  | 7.23  |
| 6.19  | 6.29  | 6.39  | 6.49  | 6.59  | 6.69  | 6.79  | 6.89  | 6.99  | 7.09  | 7.19  | 7.29  |
| 6.25  | 6.35  | 6.45  | 6.55  | 6.65  | 6.75  | 6.85  | 6.95  | 7.05  | 7.15  | 7.25  | 7.35  |
| 6.31  | 6.41  | 6.51  | 6.61  | 6.71  | 6.81  | 6.91  | 7.01  | 7.11  | 7.21  | 7.31  | 7.41  |
| 6.37  | 6.47  | 6.57  | 6.67  | 6.77  | 6.87  | 6.97  | 7.07  | 7.17  | 7.27  | 7.37  | 7.47  |
| 6.43  | 6.53  | 6.63  | 6.73  | 6.83  | 6.93  | 7.03  | 7.13  | 7.23  | 7.33  | 7.43  | 7.53  |
| 6.49  | 6.59  | 6.69  | 6.79  | 6.89  | 6.99  | 7.09  | 7.19  | 7.29  | 7.39  | 7.49  | 7.59  |
| 6.55  | 6.65  | 6.75  | 6.85  | 6.95  | 7.05  | 7.15  | 7.25  | 7.35  | 7.45  | 7.55  | 7.65  |
| 6.61  | 6.71  | 6.81  | 6.91  | 7.01  | 7.11  | 7.21  | 7.31  | 7.41  | 7.51  | 7.61  | 7.71  |
| 6.67  | 6.77  | 6.87  | 6.97  | 7.07  | 7.17  | 7.27  | 7.37  | 7.47  | 7.57  | 7.67  | 7.77  |
| 6.73  | 6.83  | 6.93  | 7.03  | 7.13  | 7.23  | 7.33  | 7.43  | 7.53  | 7.63  | 7.73  | 7.83  |
| 6.79  | 6.89  | 6.99  | 7.09  | 7.19  | 7.29  | 7.39  | 7.49  | 7.59  | 7.69  | 7.79  | 7.89  |
| 6.85  | 6.95  | 7.05  | 7.15  | 7.25  | 7.35  | 7.45  | 7.55  | 7.65  | 7.75  | 7.85  | 7.95  |
| 6.91  | 7.01  | 7.11  | 7.21  | 7.31  | 7.41  | 7.51  | 7.61  | 7.71  | 7.81  | 7.91  | 8.01  |
| 6.97  | 7.07  | 7.17  | 7.27  | 7.37  | 7.47  | 7.57  | 7.67  | 7.77  | 7.87  | 7.97  | 8.07  |
| 7.03  | 7.13  | 7.23  | 7.33  | 7.43  | 7.53  | 7.63  | 7.73  | 7.83  | 7.93  | 8.03  | 8.13  |
| 7.09  | 7.19  | 7.29  | 7.39  | 7.49  | 7.59  | 7.69  | 7.79  | 7.89  | 7.99  | 8.09  | 8.19  |
| 7.15  | 7.25  | 7.35  | 7.45  | 7.55  | 7.65  | 7.75  | 7.85  | 7.95  | 8.05  | 8.15  | 8.25  |
| 7.21  | 7.31  | 7.41  | 7.51  | 7.61  | 7.71  | 7.81  | 7.91  | 8.01  | 8.11  | 8.21  | 8.31  |
| 7.27  | 7.37  | 7.47  | 7.57  | 7.67  | 7.77  | 7.87  | 7.97  | 8.07  | 8.17  | 8.27  | 8.37  |
| 7.33  | 7.43  | 7.53  | 7.63  | 7.73  | 7.83  | 7.93  | 8.03  | 8.13  | 8.23  | 8.33  | 8.43  |
| 7.39  | 7.49  | 7.59  | 7.69  | 7.79  | 7.89  | 7.99  | 8.09  | 8.19  | 8.29  | 8.39  | 8.49  |
| 7.45  | 7.55  | 7.65  | 7.75  | 7.85  | 7.95  | 8.05  | 8.15  | 8.25  | 8.35  | 8.45  | 8.55  |
| 7.51  | 7.61  | 7.71  | 7.81  | 7.91  | 8.01  | 8.11  | 8.21  | 8.31  | 8.41  | 8.51  | 8.61  |
| 7.57  | 7.67  | 7.77  | 7.87  | 7.97  | 8.07  | 8.17  | 8.27  | 8.37  | 8.47  | 8.57  | 8.67  |
| 7.63  | 7.73  | 7.83  | 7.93  | 8.03  | 8.13  | 8.23  | 8.33  | 8.43  | 8.53  | 8.63  | 8.73  |
| 7.69  | 7.79  | 7.89  | 7.99  | 8.09  | 8.19  | 8.29  | 8.39  | 8.49  | 8.59  | 8.69  | 8.79  |
| 7.75  | 7.85  | 7.95  | 8.05  | 8.15  | 8.25  | 8.35  | 8.45  | 8.55  | 8.65  | 8.75  | 8.85  |
| 7.81  | 7.91  | 8.01  | 8.11  | 8.21  | 8.31  | 8.41  | 8.51  | 8.61  | 8.71  | 8.81  | 8.91  |
| 7.87  | 7.97  | 8.07  | 8.17  | 8.27  | 8.37  | 8.47  | 8.57  | 8.67  | 8.77  | 8.87  | 8.97  |
| 7.93  | 8.03  | 8.13  | 8.23  | 8.33  | 8.43  | 8.53  | 8.63  | 8.73  | 8.83  | 8.93  | 9.03  |
| 7.99  | 8.09  | 8.19  | 8.29  | 8.39  | 8.49  | 8.59  | 8.69  | 8.79  | 8.89  | 8.99  | 9.09  |
| 8.05  | 8.15  | 8.25  | 8.35  | 8.45  | 8.55  | 8.65  | 8.75  | 8.85  | 8.95  | 9.05  | 9.15  |
| 8.11  | 8.21  | 8.31  | 8.41  | 8.51  | 8.61  | 8.71  | 8.81  | 8.91  | 9.01  | 9.11  | 9.21  |
| 8.17  | 8.27  | 8.37  | 8.47  | 8.57  | 8.67  | 8.77  | 8.87  | 8.97  | 9.07  | 9.17  | 9.27  |
| 8.23  | 8.33  | 8.43  | 8.53  | 8.63  | 8.73  | 8.83  | 8.93  | 9.03  | 9.13  | 9.23  | 9.33  |
| 8.29  | 8.39  | 8.49  | 8.59  | 8.69  | 8.79  | 8.89  | 8.99  | 9.09  | 9.19  | 9.29  | 9.39  |
| 8.35  | 8.45  | 8.55  | 8.65  | 8.75  | 8.85  | 8.95  | 9.05  | 9.15  | 9.25  | 9.35  | 9.45  |
| 8.41  | 8.51  | 8.61  | 8.71  | 8.81  | 8.91  | 9.01  | 9.11  | 9.21  | 9.31  | 9.41  | 9.51  |
| 8.47  | 8.57  | 8.67  | 8.77  | 8.87  | 8.97  | 9.07  | 9.17  | 9.27  | 9.37  | 9.47  | 9.57  |
| 8.53  | 8.63  | 8.73  | 8.83  | 8.93  | 9.03  | 9.13  | 9.23  | 9.33  | 9.43  | 9.53  | 9.63  |
| 8.59  | 8.69  | 8.79  | 8.89  | 8.99  | 9.09  | 9.19  | 9.29  | 9.39  | 9.49  | 9.59  | 9.69  |
| 8.65  | 8.75  | 8.85  | 8.95  | 9.05  | 9.15  | 9.25  | 9.35  | 9.45  | 9.55  | 9.65  | 9.75  |
| 8.71  | 8.81  | 8.91  | 9.01  | 9.11  | 9.21  | 9.31  | 9.41  | 9.51  | 9.61  | 9.71  | 9.81  |
| 8.77  | 8.87  | 8.97  | 9.07  | 9.17  | 9.27  | 9.37  | 9.47  | 9.57  | 9.67  | 9.77  | 9.87  |
| 8.83  | 8.93  | 9.03  | 9.13  | 9.23  | 9.33  | 9.43  | 9.53  | 9.63  | 9.73  | 9.83  | 9.93  |
| 8.89  | 8.99  | 9.09  | 9.19  | 9.29  | 9.39  | 9.49  | 9.59  | 9.69  | 9.79  | 9.89  | 9.99  |
| 8.95  | 9.05  | 9.15  | 9.25  | 9.35  | 9.45  | 9.55  | 9.65  | 9.75  | 9.85  | 9.95  | 10.05 |
| 9.01  | 9.11  | 9.21  | 9.31  | 9.41  | 9.51  | 9.61  | 9.71  | 9.81  | 9.91  | 10.01 | 10.11 |
| 9.07  | 9.17  | 9.27  | 9.37  | 9.47  | 9.57  | 9.67  | 9.77  | 9.87  | 9.97  | 10.07 | 10.17 |
| 9.13  | 9.23  | 9.33  | 9.43  | 9.53  | 9.63  | 9.73  | 9.83  | 9.93  | 10.03 | 10.13 | 10.23 |
| 9.19  | 9.29  | 9.39  | 9.49  | 9.59  | 9.69  | 9.79  | 9.89  | 9.99  | 10.09 | 10.19 | 10.29 |
| 9.25  | 9.35  | 9.45  | 9.55  | 9.65  | 9.75  | 9.85  | 9.95  | 10.05 | 10.15 | 10.25 | 10.35 |
| 9.31  | 9.41  | 9.51  | 9.61  | 9.71  | 9.81  | 9.91  | 10.01 | 10.11 | 10.21 | 10.31 | 10.41 |
| 9.37  | 9.47  | 9.57  | 9.67  | 9.77  | 9.87  | 9.97  | 10.07 | 10.17 | 10.27 | 10.37 | 10.47 |
| 9.43  | 9.53  | 9.63  | 9.73  | 9.83  | 9.93  | 10.03 | 10.13 | 10.23 | 10.33 | 10.43 | 10.53 |
| 9.49  | 9.59  | 9.69  | 9.79  | 9.89  | 9.99  | 10.09 | 10.19 | 10.29 | 10.39 | 10.49 | 10.59 |
| 9.55  | 9.65  | 9.75  | 9.85  | 9.95  | 10.05 | 10.15 | 10.25 | 10.35 | 10.45 | 10.55 | 10.65 |
| 9.61  | 9.71  | 9.81  | 9.91  | 10.01 | 10.11 | 10.21 | 10.31 | 10.41 | 10.51 | 10.61 | 10.71 |
| 9.67  | 9.77  | 9.87  | 9.97  | 10.07 | 10.17 | 10.27 | 10.37 | 10.47 | 10.57 | 10.67 | 10.77 |
| 9.73  | 9.83  | 9.93  | 10.03 | 10.13 | 10.23 | 10.33 | 10.43 | 10.53 | 10.63 | 10.73 | 10.83 |
| 9.79  | 9.89  | 9.99  | 10.09 | 10.19 | 10.29 | 10.39 | 10.49 | 10.59 | 10.69 | 10.79 | 10.89 |
| 9.85  | 9.95  | 10.05 | 10.15 | 10.25 | 10.35 | 10.45 | 10.55 | 10.65 | 10.75 | 10.85 | 10.95 |
| 9.91  | 10.01 | 10.11 | 10.21 | 10.31 | 10.41 | 10.51 | 10.61 | 10.71 | 10.81 | 10.91 | 11.01 |
| 9.97  | 10.07 | 10.17 | 10.27 | 10.37 | 10.47 | 10.57 | 10.67 | 10.77 | 10.87 | 10.97 | 11.07 |
| 10.03   | 10.13 | 10.23 | 10.33 | 10.43 | 10.53 | 10.63 | 10.73 | 10.83 | 10.93 | 11.03 | 11.13 |
| 10.09   | 10.19 | 10.29 | 10.39 | 10.49 | 10.59 | 10.69 | 10.79 | 10.89 | 10.99 | 11.09 | 11.19 |
| 10.15   | 10.25 | 10.35 | 10.45 | 10.55 | 10.65 | 10.75 | 10.85 | 10.95 | 11.05 | 11.15 | 11.25 |
| 10.21   | 10.31 | 10.41 | 10.51 | 10.61 | 10.71 | 10.81 | 10.91 | 11.01 | 11.11 | 11.21 | 11.31 |
| 10.27   | 10.37 | 10.47 | 10.57 | 10.67 | 10.77 | 10.87 | 10.97 | 11.07 | 11.17 | 11.27 | 11.37 |
| 10.33   | 10.43 | 10.53 | 10.63 | 10.73 | 10.83 | 10.93 | 11.03 | 11.13 | 11.23 | 11.33 | 11.43 |
| 10.39   | 10.49 | 10.59 | 10.69 | 10.79 | 10.89 | 10.99 | 11.09 | 11.19 | 11.29 | 11.39 | 11.49 |
| 10.45   | 10.55 | 10.65 | 10.75 | 10.85 | 10.95 | 11.05 | 11.15 | 11.25 | 11.35 | 11.45 | 11.55 |
| 10.51   | 10.61 | 10.71 | 10.81 | 10.91 | 11.01 | 11.11 | 11.21 | 11.31 | 11.41 | 11.51 | 11.61 |
| 10.57   | 10.67 | 10.77 | 10.87 | 10.97 | 11.07 | 11.17 | 11.27 | 11.37 | 11.47 | 11.57 | 11.67 |
| 10.63   | 10.73 | 10.83 | 10.93 | 11.03 | 11.13 | 11.23 | 11.33 | 11.43 | 11.53 | 11.63 | 11.73 |
| 10.69   | 10.79 | 10.89 | 10.99 | 11.09 | 11.19 | 11.29 | 11.39 | 11.49 | 11.59 | 11.69 | 11.79 |
| 10.75   | 10.85 | 10.95 | 11.05 | 11.15 | 11.25 | 11.35 | 11.45 | 11.55 | 11.65 | 11.75 | 11.85 |
| 10.81   | 10.91 | 11.01 | 11.11 | 11.21 | 11.31 | 11.41 | 11.51 | 11.61 | 11.71 | 11.81 | 11.91 |
| 10.87   | 10.97 | 11.07 | 11.17 | 11.27 | 11.37 | 11.47 | 11.57 | 11.67 | 11.77 | 11.87 | 11.97 |
| 10.93   | 11.03 | 11.13 | 11.23 | 11.33 | 11.43 | 11.53 | 11.63 | 11.73 | 11.83 | 11.93 | 12.03 |
| 10.99   | 11.09 | 11.19 | 11.29 | 11.39 | 11.49 | 11.59 | 11.69 | 11.79 | 11.89 | 11.99 | 12.09 |
| 11.05   | 11.15 | 11.25 | 11.35 | 11.45 | 11.55 | 11.65 | 11.75 | 11.85 | 11.95 | 12.05 | 12.15 |
| 11.11   | 11.21 | 11.31 | 11.41 | 11.51 | 11.61 | 11.71 | 11.81 | 11.91 | 12.01 | 12.11 | 12.21 |
| 11.17   | 11.27 | 11.37 | 11.47 | 11.57 | 11.67 | 11.77 | 11.87 | 11.97 | 12.07 | 12.17 | 12.27 |
| 11.23   | 11.33 | 11.43 | 11.53 | 11.63 | 11.73 | 11.83 | 11.93 | 12.03 | 12.13 | 12.23 | 12.33 |
| 11.29   | 11.39 | 11.49 | 11.59 | 11.69 | 11.79 | 11.89 | 11.99 | 12.09 | 12.19 | 12.29 | 12.39 |
| 11.35   | 11.45 | 11.55 | 11.65 | 11.75 | 11.85 | 11.95 | 12.05 | 12.15 | 12.25 | 12.35 | 12.45 |
| 11.41   | 11.51 | 11.61 | 11.71 | 11.81 | 11.91 | 12.01 | 12.11 | 12.21 | 12.31 | 12.41 | 12.51 |
| 11.47   | 11.57 | 11.67 | 11.77 | 11.87 | 11.97 |       |       |       |       |       |       |

Mead  
A

**Note:-**

Flow line of existing cb fgr. to be checked in field  
of cb. fgr. removed & replaced where necessary.

B.M. 9804 ~ N.W. corner conc. park Ho. 2402 S. Mead.  
B.M. 9645 ~ 6" in Globe. N. Rd. drive of No. 2521 Mead.  
B.M. 9693 ~ 8" in Globe N. Rd. drive returns 2451 Mead.



Ave.

Property

|              |
|--------------|
| 23.5         |
| 23.0         |
| 23.0         |
| 24.3         |
| 24.9         |
| 25.0         |
| 25.2         |
| 23.5         |
| 22.0         |
| 20.7         |
| 234.6        |
| +107.0       |
| 2581 cu yds. |

Fawnee

Grand Total  
Property

|              |
|--------------|
| 2581         |
| 2949         |
| 2257         |
| 7837 cu yds. |

City  
0

Mead Ave.  
N.L. Marion Rd. to S.L. Fawnee

(3)  
3