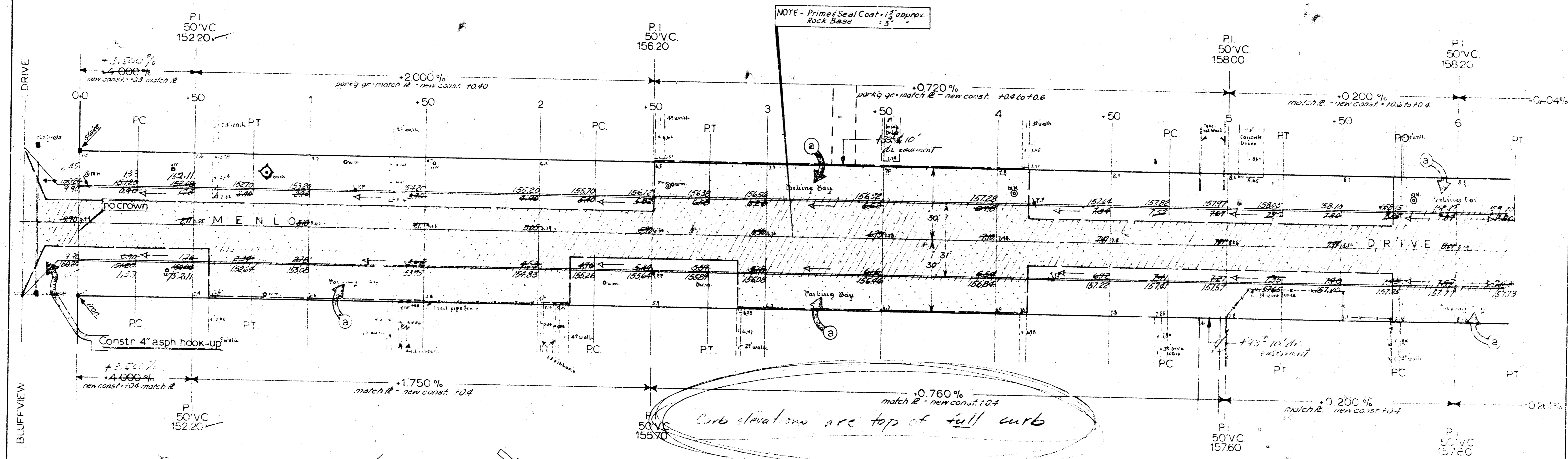
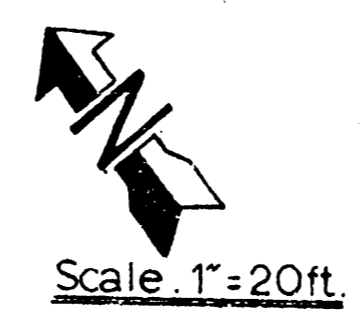






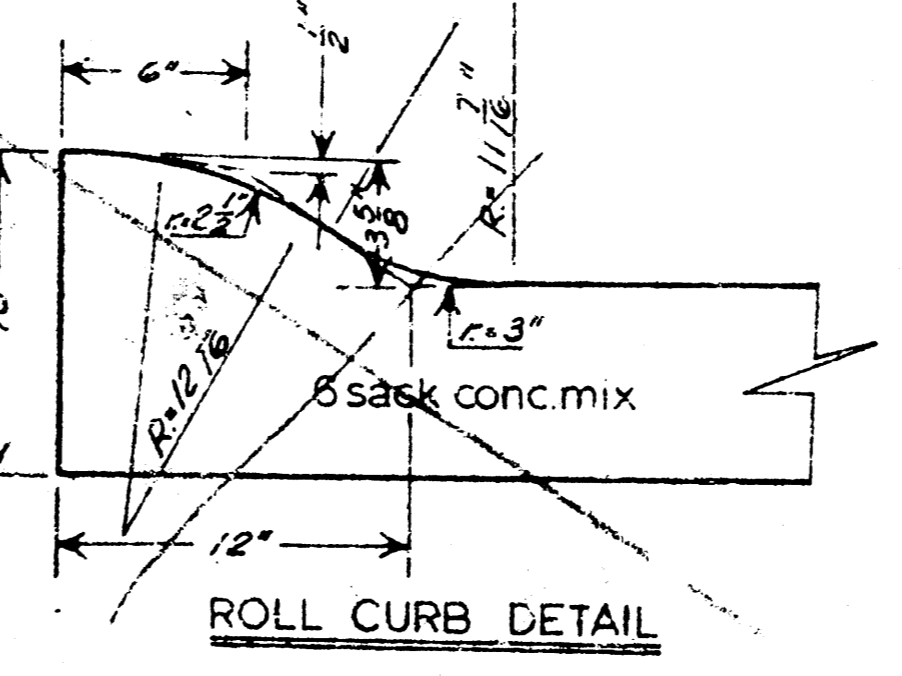
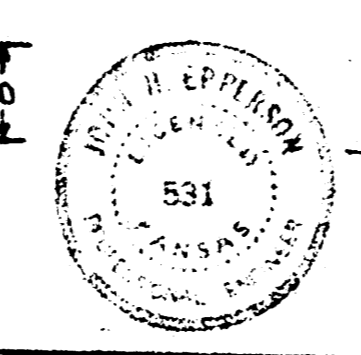
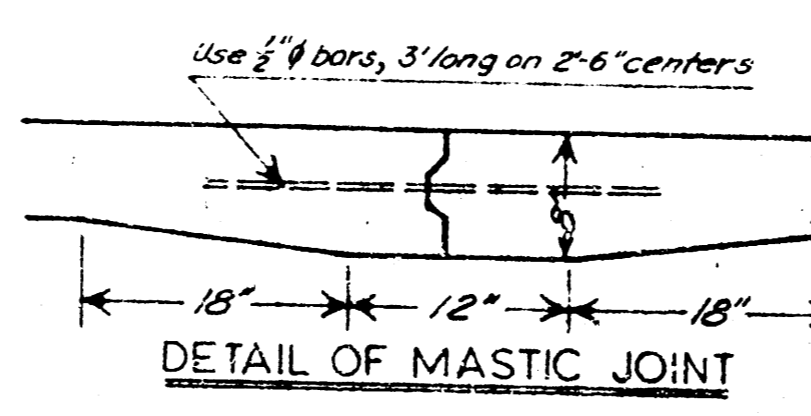
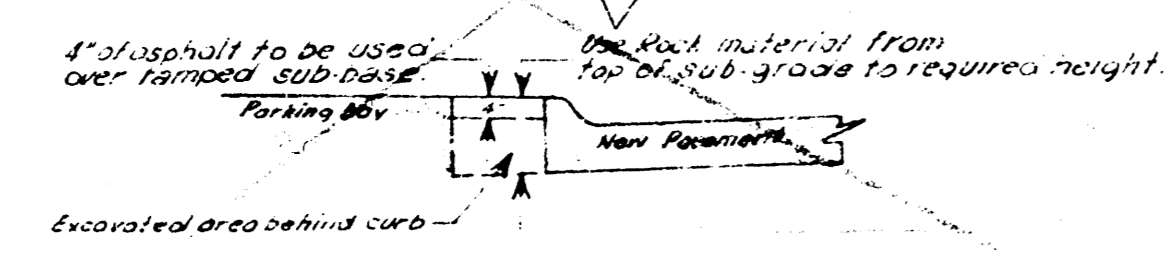
BM: 15138 in spike s/c pole ne cor Bluffview + Menlo  
 15880 e bolt fringe fire hyd sw cor Menlo + Terrace



NOTE - Prime Seal Coat 1/2" approx  
 Rock Base 1.5"

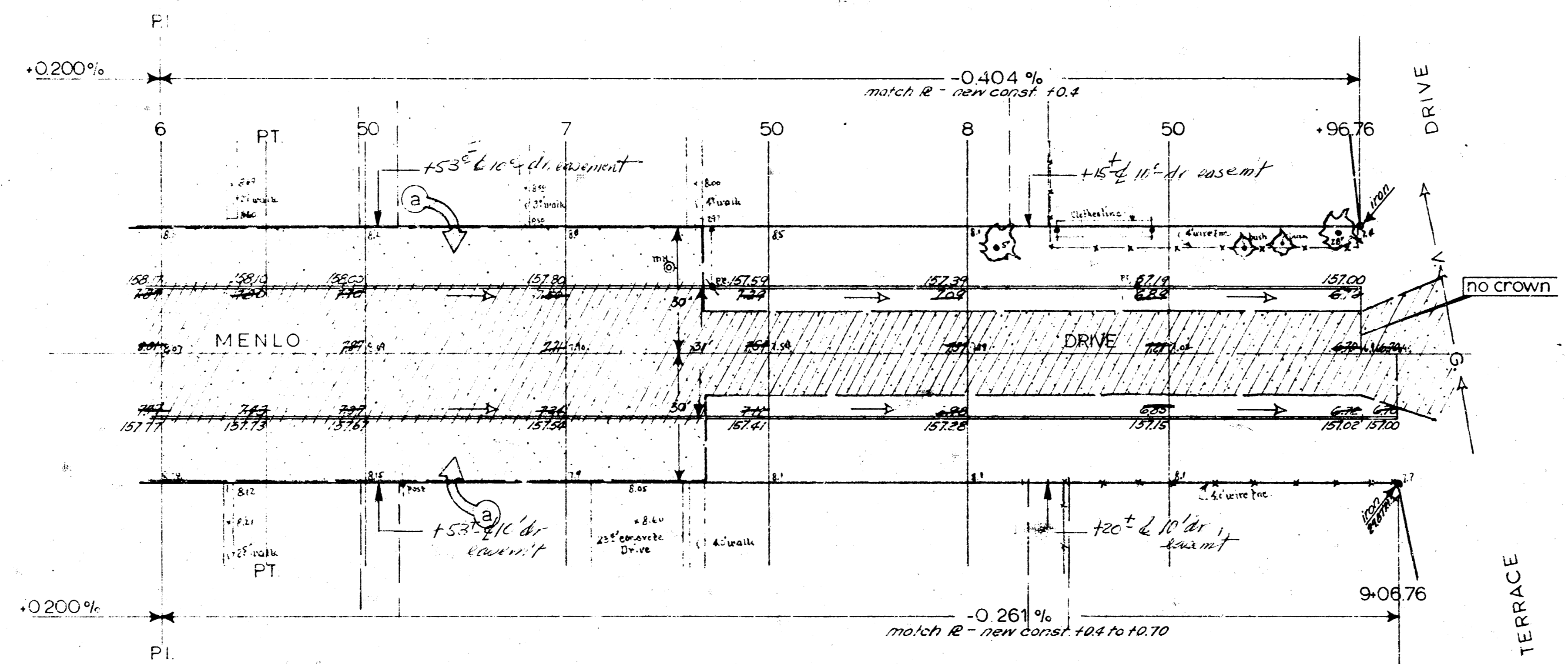
Note: Remove only what is necessary of asphalt mat from parking bays to allow setting of curb forms. Replace with 4" concrete curb with hot asphalt mix. If parking bay is of rock base, remove parking bay behind curb with the rock material from sub-base.

NOTE TO FIELD ENGINEER - All approach walks to remain in place except where they interfere with construction. In this event remove only what is necessary for street const.



Excavation Totals	
prop.	city
688.3	10.0
698.3 +10%	11.0 +10%
768.7 CV	11.0 CV

MENLO DRIVE	
EL Bluffview	to WL Terrace Dr
30' conc + roll curb	
Dept of Public Works - Engineering Div	
CITY OF WICHITA, KANSAS	
B.E. Smith	City Engineer
Date: APRIL 1962	Project No. C11-34



MENLO DRIVE  
Proj no C11-34