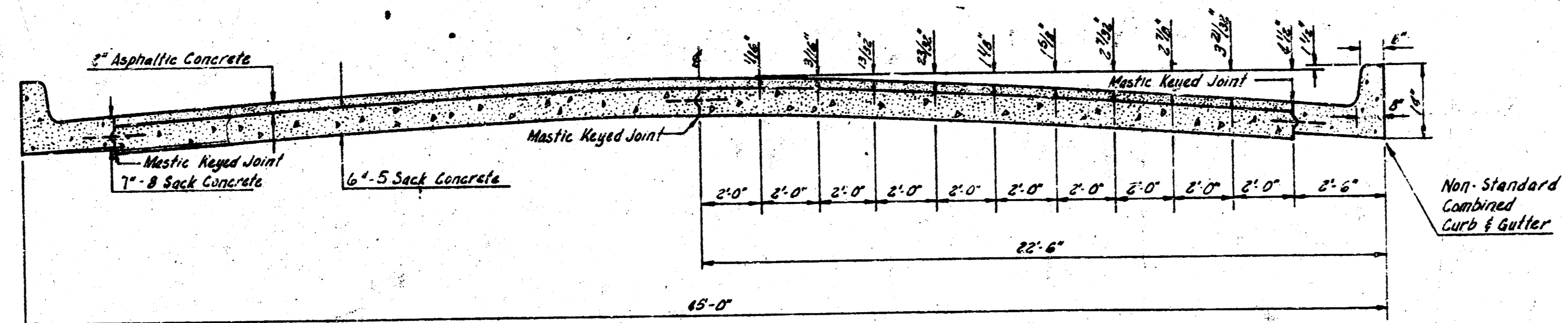
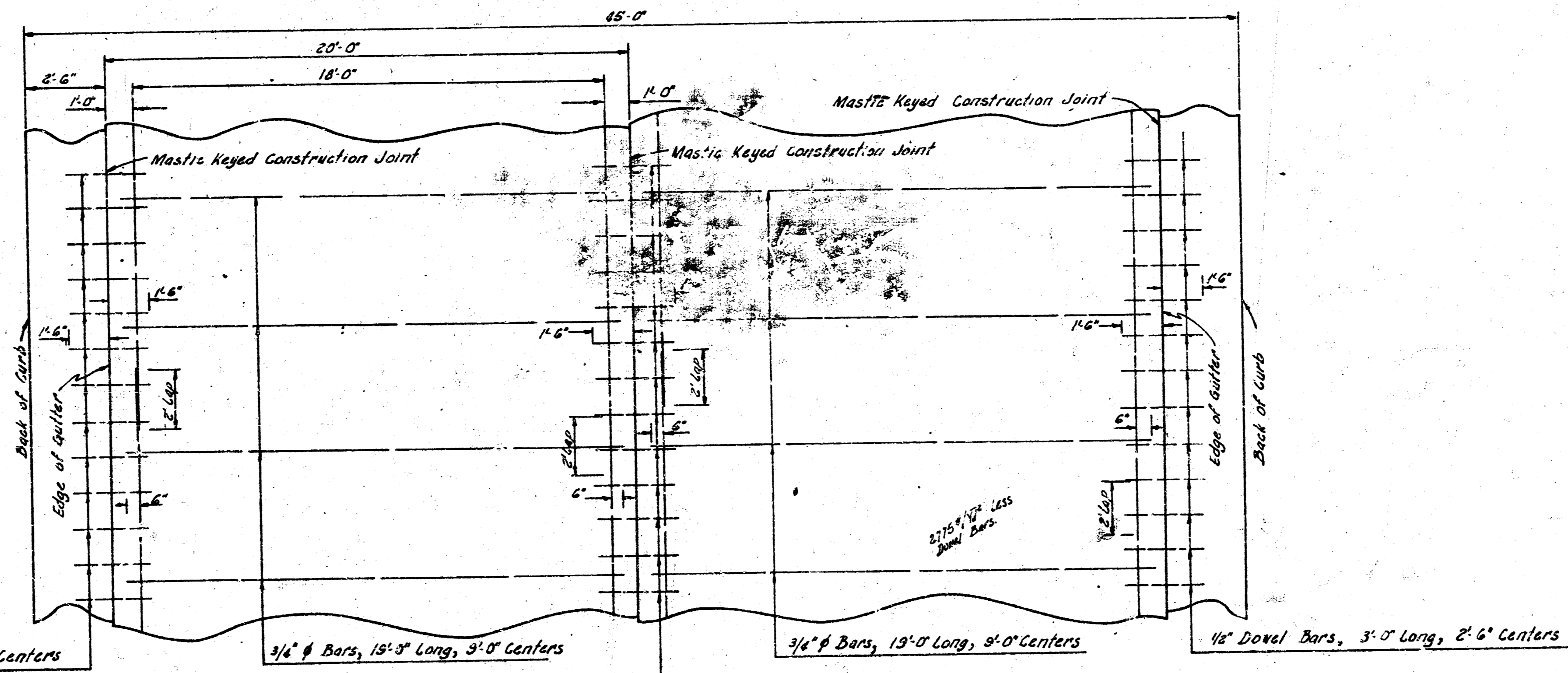


MERIDIAN AVENUE
 NL 33RD ST SO. TO SL 31ST ST. SO.
 PROJECT NO. C18-117
 26-2-30 A. C. WIDEN TO 44 FEET



TYPICAL SECTION
NOT TO SCALE



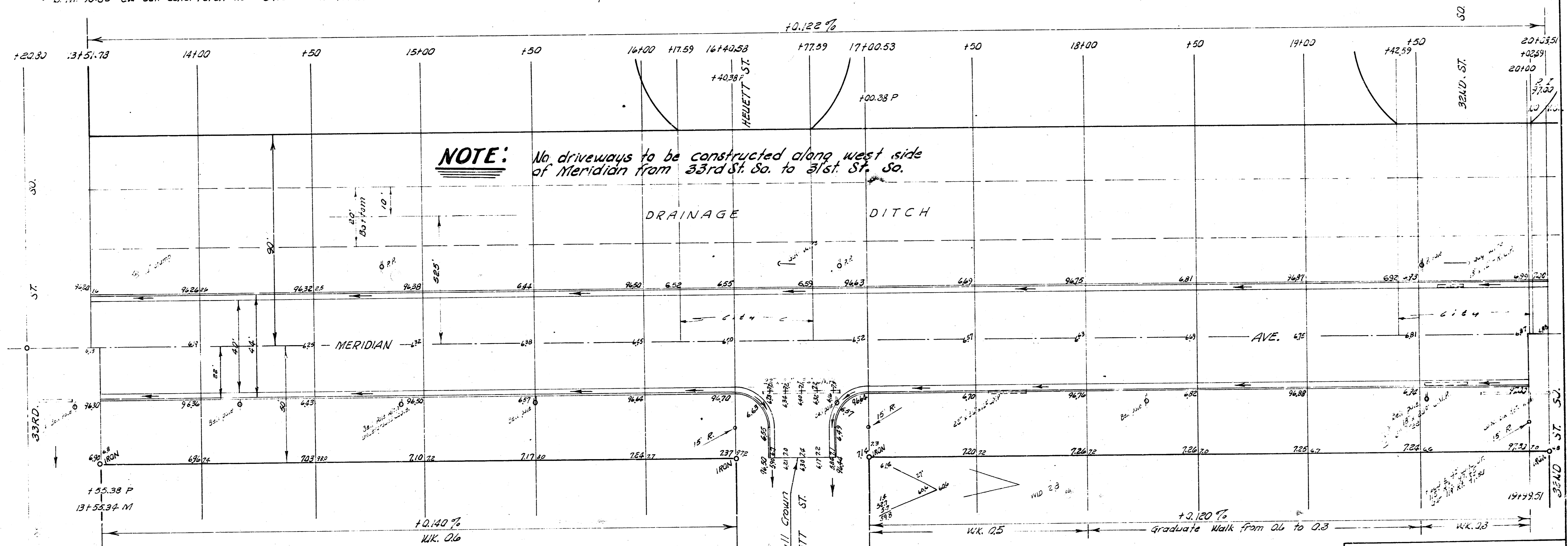
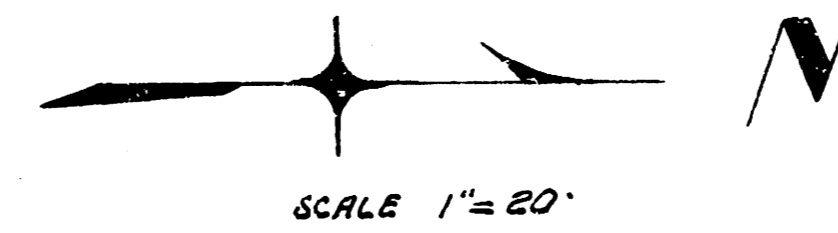
STEEL PATTERN
NOT TO SCALE
USE 3/4" # BARS EXCEPT WHERE NOTED

D.P.G. 11/10/34
 C.W. 4-10-35
 11/10/34

1/6

P.M. 97.605 U.S. G.S. Sta. bench on SW cor Meridian & 31st St. So.
 B.M. 95.458 City Sta. @ Meridian & 35th St. So.
 Baseline on Meridian Ave.
 B.M. 98.85 SW cor conc. Porch Ho # 3410 S. Meridian.

NOTE TO CONTRACTOR & FIELD ENGINEER:
 All entrance pipes are to be disposed of
 in accordance with instruction from the
 city dirt checker.



NOTE: No driveways to be constructed along west side of Meridian from 33rd St. So. to 31st St. So.

NOTE TO FIELD ENGINEER:

Re cross-section along west curb before construction.
 No driveways or street openings to be left in curb on West side.

EARTH WORK EXCAVATION

CITY	PROP.	WIDENING
226.7	1739.7	466.4
22.7	174.0	46.6
249.4	1913.7 Cu. Yds	513.0 Cu. Yds.

NOTE TO CONTRACTOR & FIELD ENGINEER:

Construction on drainage ditch to be completed and intersection at 31st St. So. open to traffic (east & west) prior to construction of this project.



MERIDIAN AVE.

AL 33RD ST. SO. TO 31ST ST. SO.
 26'-2'-30" A. C.
 WIDEN TO 44 FT.
CITY OF WICHITA, KANSAS
 B. E. SMITH CITY ENGINEER
 PROJ. NO. C18-117

