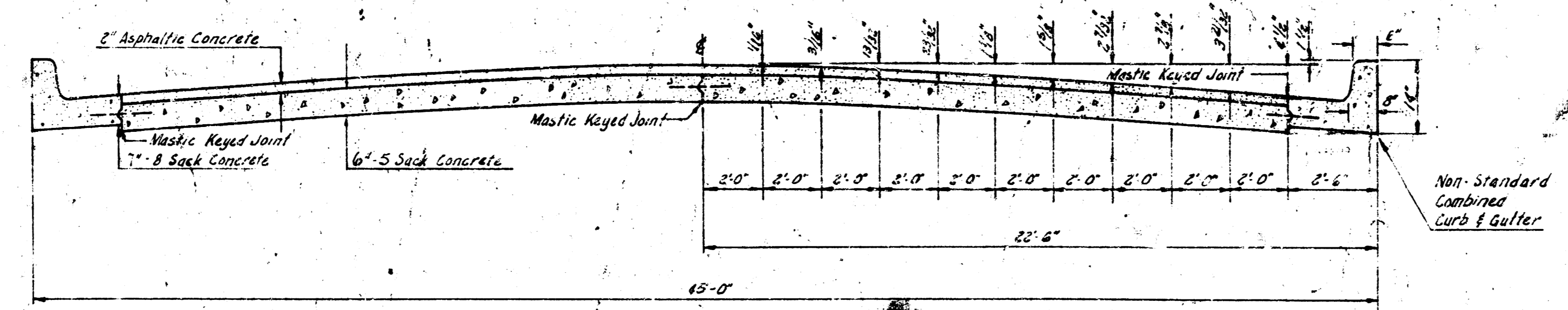
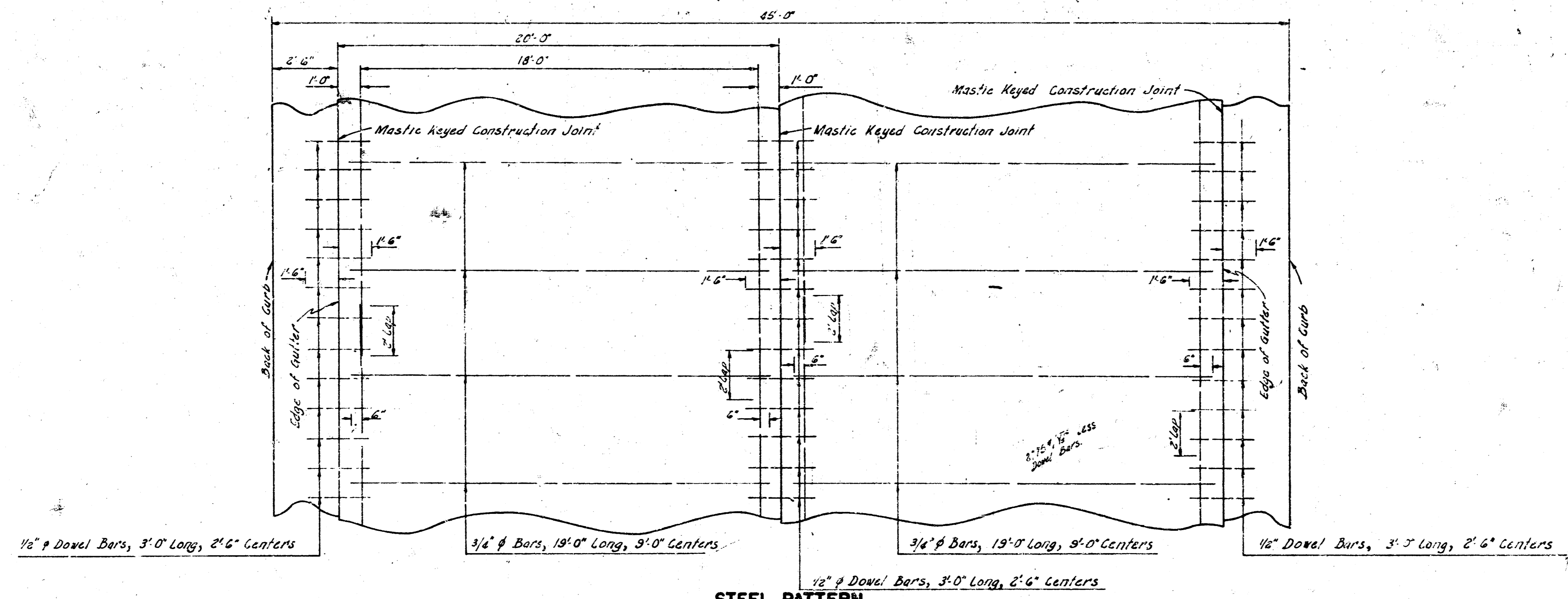


MERIDIAN AVENUE
 SL 31ST. ST. SO. TO SL PAWNEE AVE.
 26-2-30 A. C. C16-79
 WIDEN TO 44 FT. 6" BASE C16-80

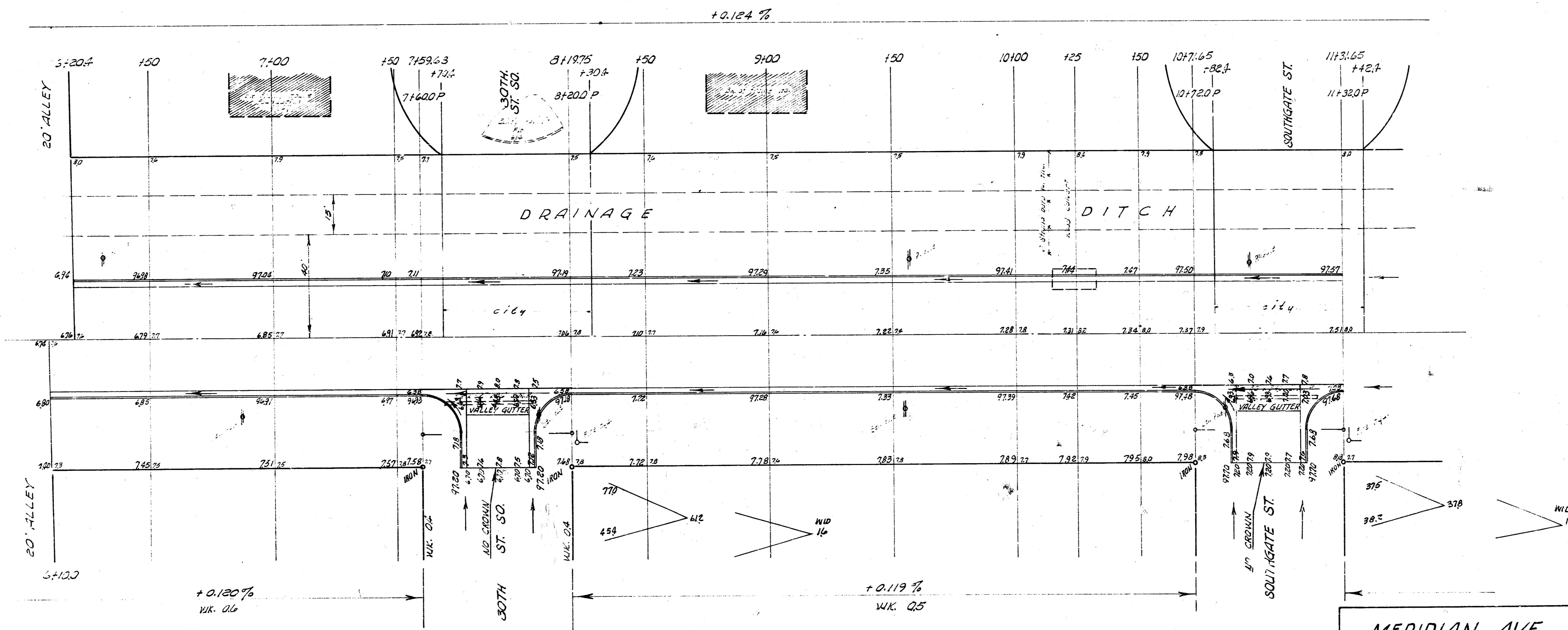
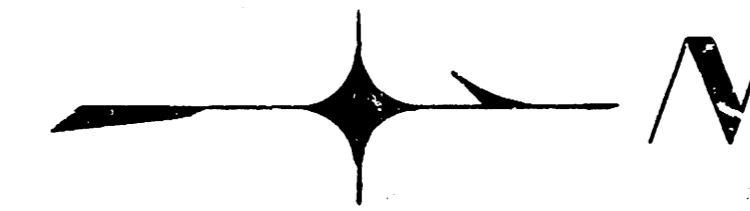


TYPICAL SECTION
 NOT TO SCALE



STEEL PATTERN
 NOT TO SCALE
 USE 3/4" Ø BARS EXCEPT WHERE NOTED

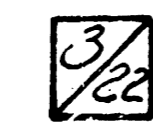
B.M. 99.97 NE cor. conc. Porch East side of House # 2503 W. 30TH ST.



NOTE TO CONTRACTOR & FIELD ENGINEER :

No construction to be done south of Sta. 27+50 until drainage ditch is complete. Intersection @ 31st to be complete and open to traffic (East & West) prior to excavation between 31st St. So. and 27th St. So.

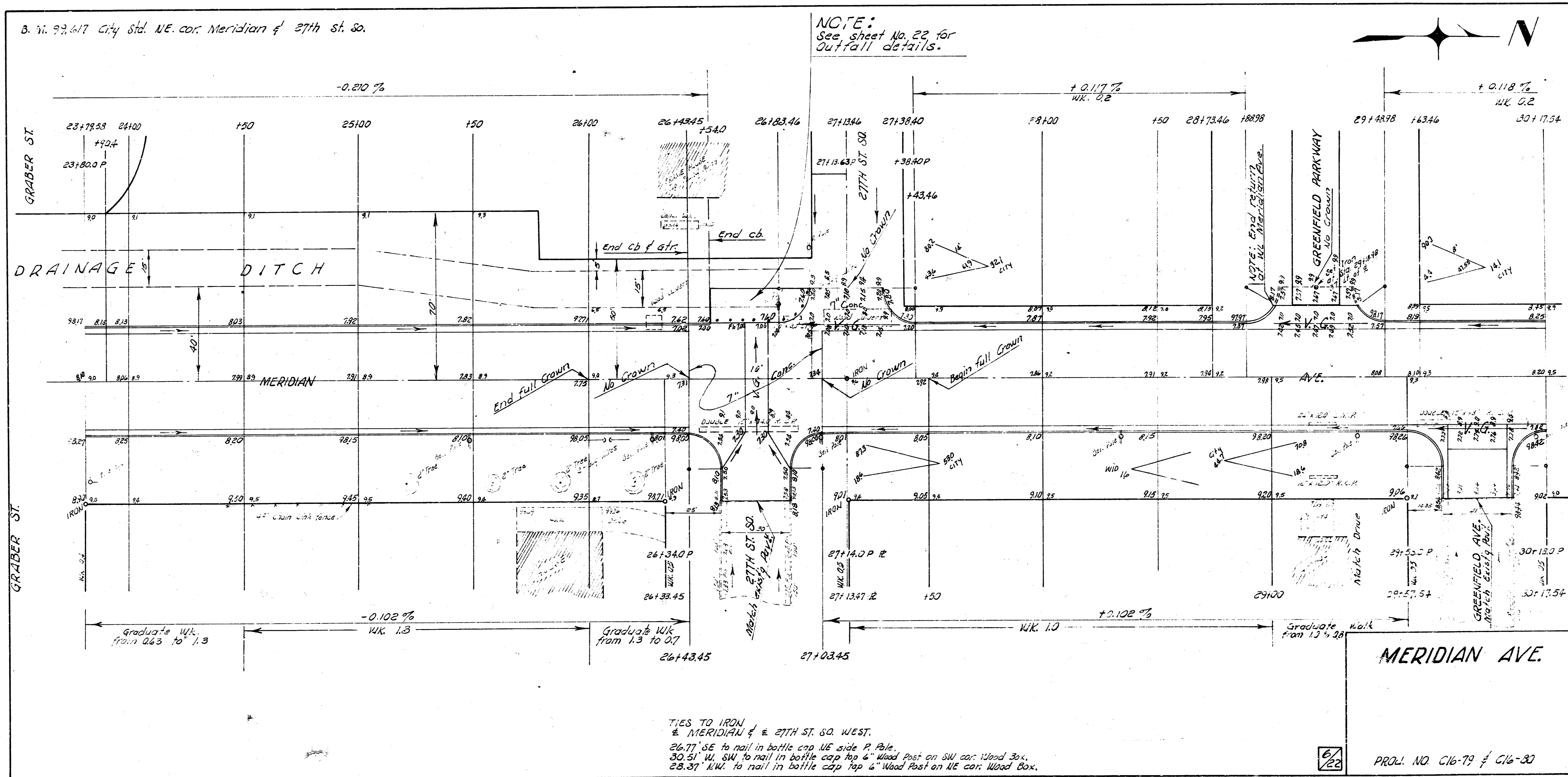
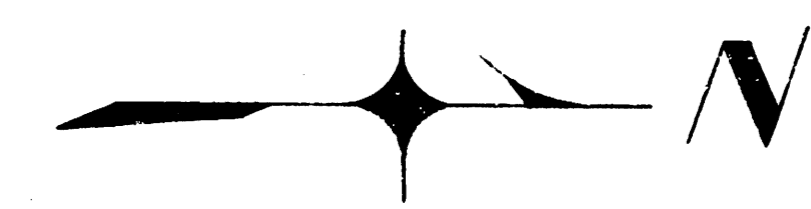
MERIDIAN AVE.



PROJ. NO. C16-79 & C16-80

B. vi. 97,417 City Std. NE. cor. Meridian & 27th St. So.

NOTE:
See sheet No. 22 for
Outfall details.

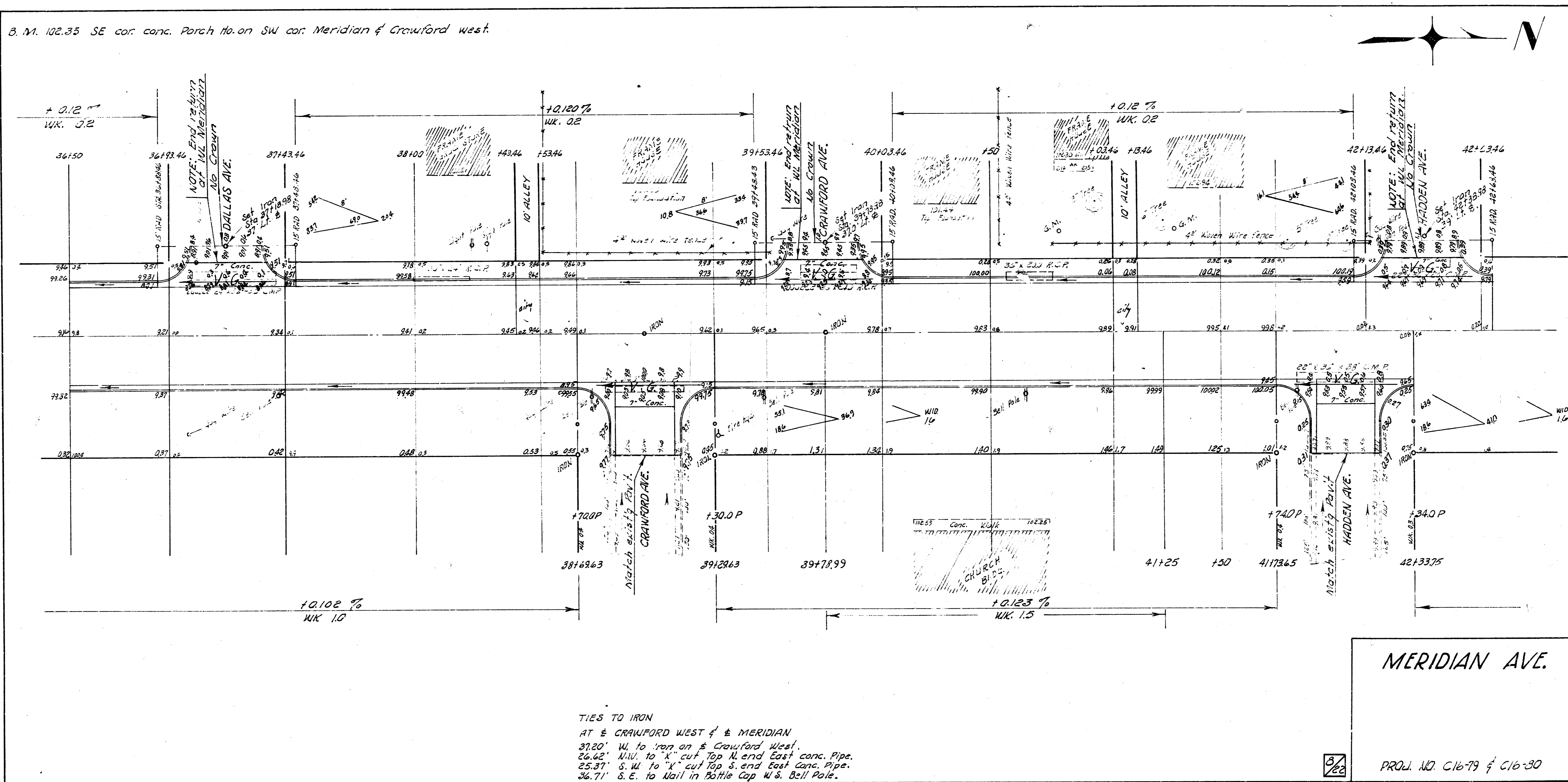


TIES TO IRON
 & MERIDIAN & 27TH ST. SO. WEST.
 26.77' SE to nail in bottle cap NE side P. Pole.
 30.51' NW SW to nail in bottle cap top & Wood Post on SW cor. Wood Box.
 23.37' NW to nail in bottle cap top & Wood Post on NE cor. Wood Box.

6/22

PROJ. NO. C16-79 & C16-80

B. M. 102.35 SE cor. conc. Porch Ho. on SW cor. Meridian & Crawford west.



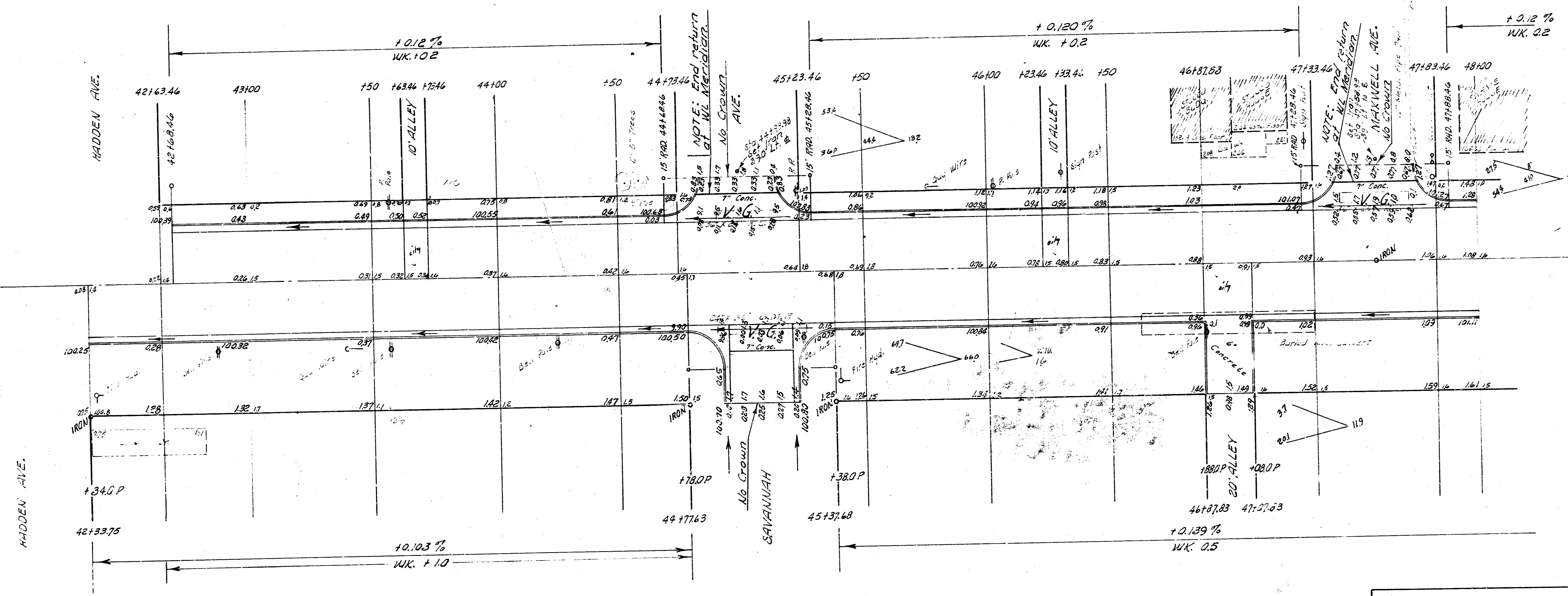
TIES TO IRON
 AT & CRAWFORD WEST & MERIDIAN
 37.20' W. to iron on & Crawford West.
 26.62' NW. to 'X' cut Top N. end East conc. Pipe.
 25.37' S. W. to 'X' cut Top S. end East conc. Pipe.
 36.71' S. E. to Nail in Bottle Cap W. S. Bell Pole.

3/28

MERIDIAN AVE.

PROJ. NO. C16-79 & C16-30

B. N. 101.54 R. R. Spike E. side R. Pole on NW cor. Savannah & Meridian.



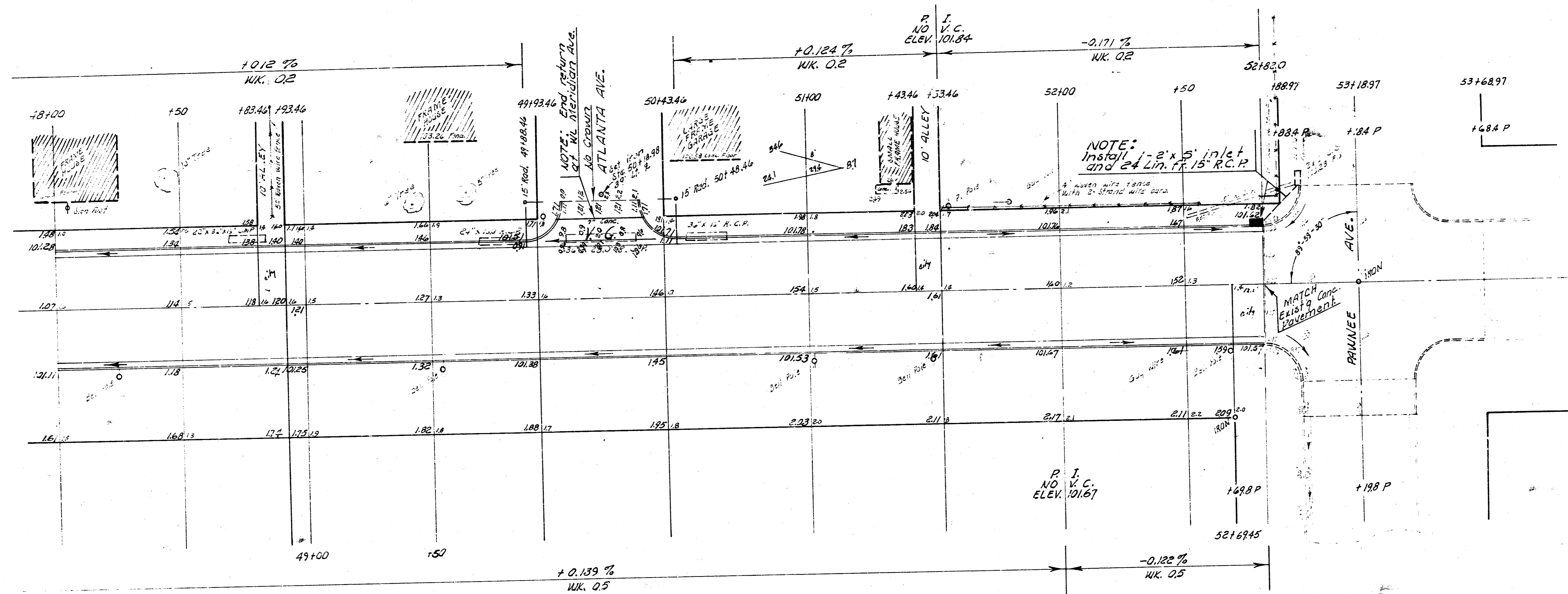
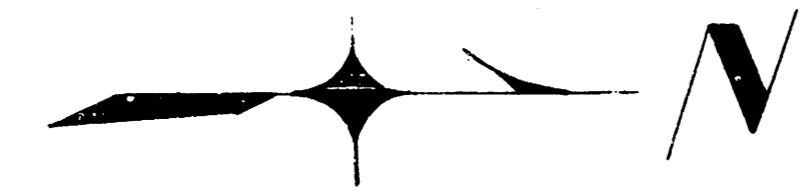
MERIDIAN AVE.

TIES TO IRON ON MAXWELL & MERIDIAN AVE.
 33.15' W. to iron on Maxwell west.
 33.56' N.W. to nail in bottle cap NE side P. Pole.
 53.23' S.W. to nail in bottle cap SE side Bell Pole.



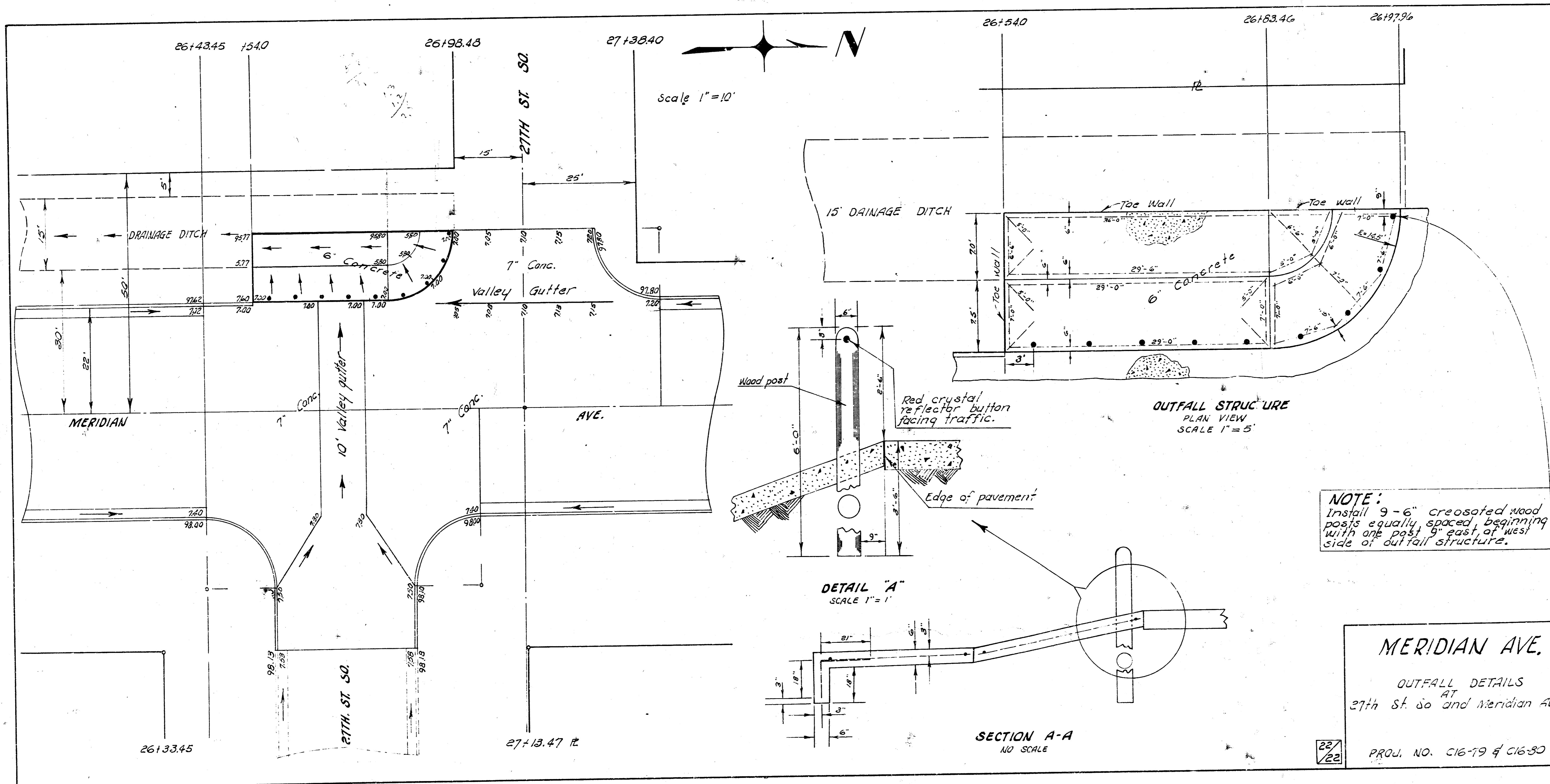
PROJ. NO. C16-79 & C16-80

S. N. 102066 New City Std. on SE cor. Meridian & Prunee.

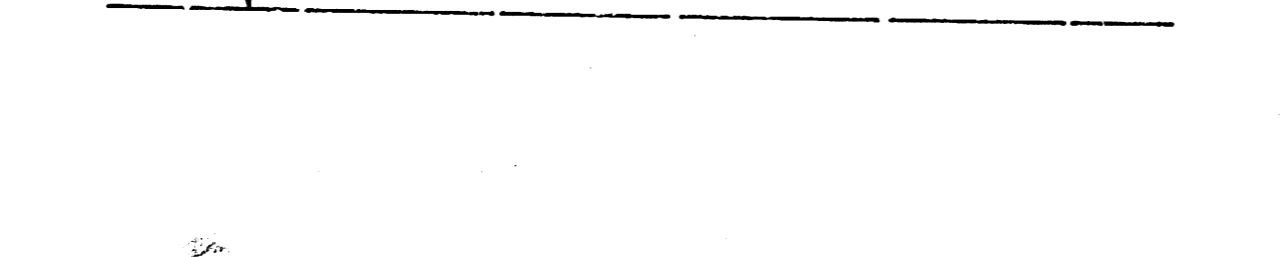
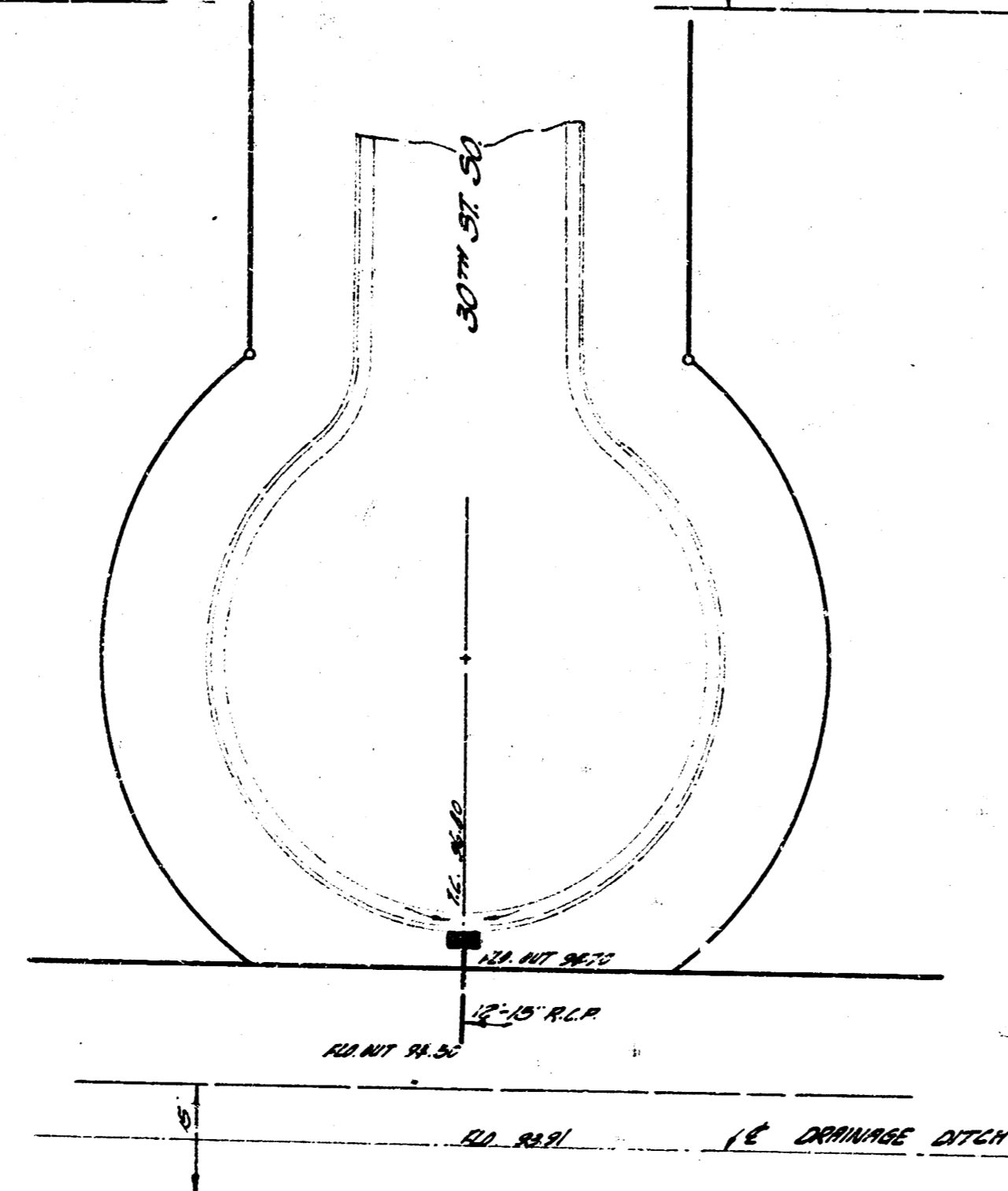
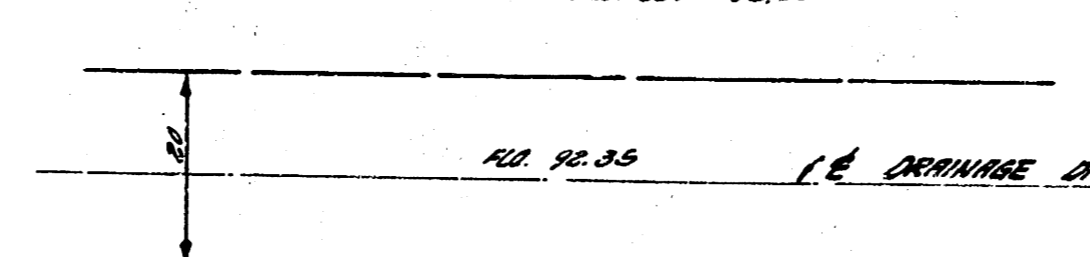
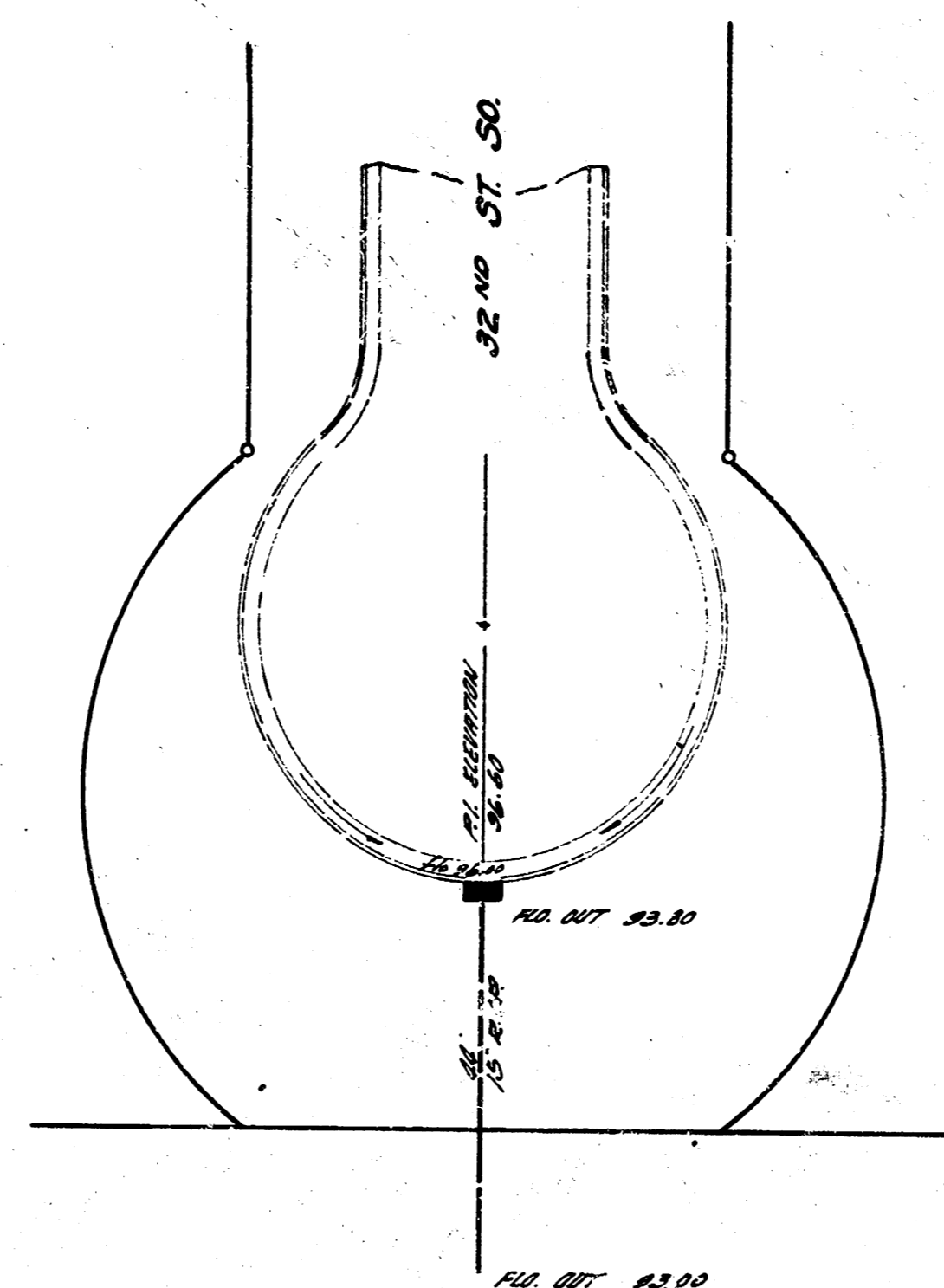
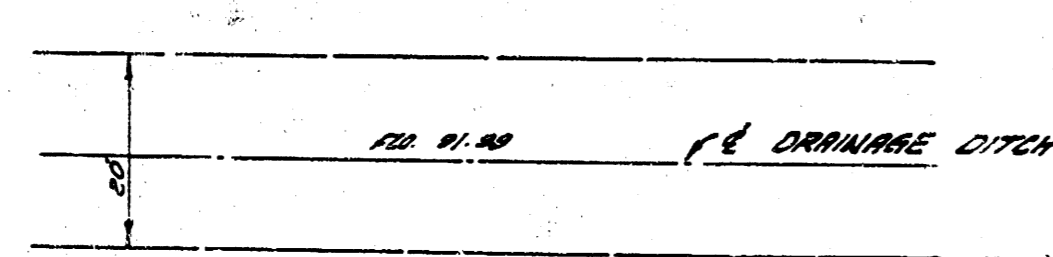
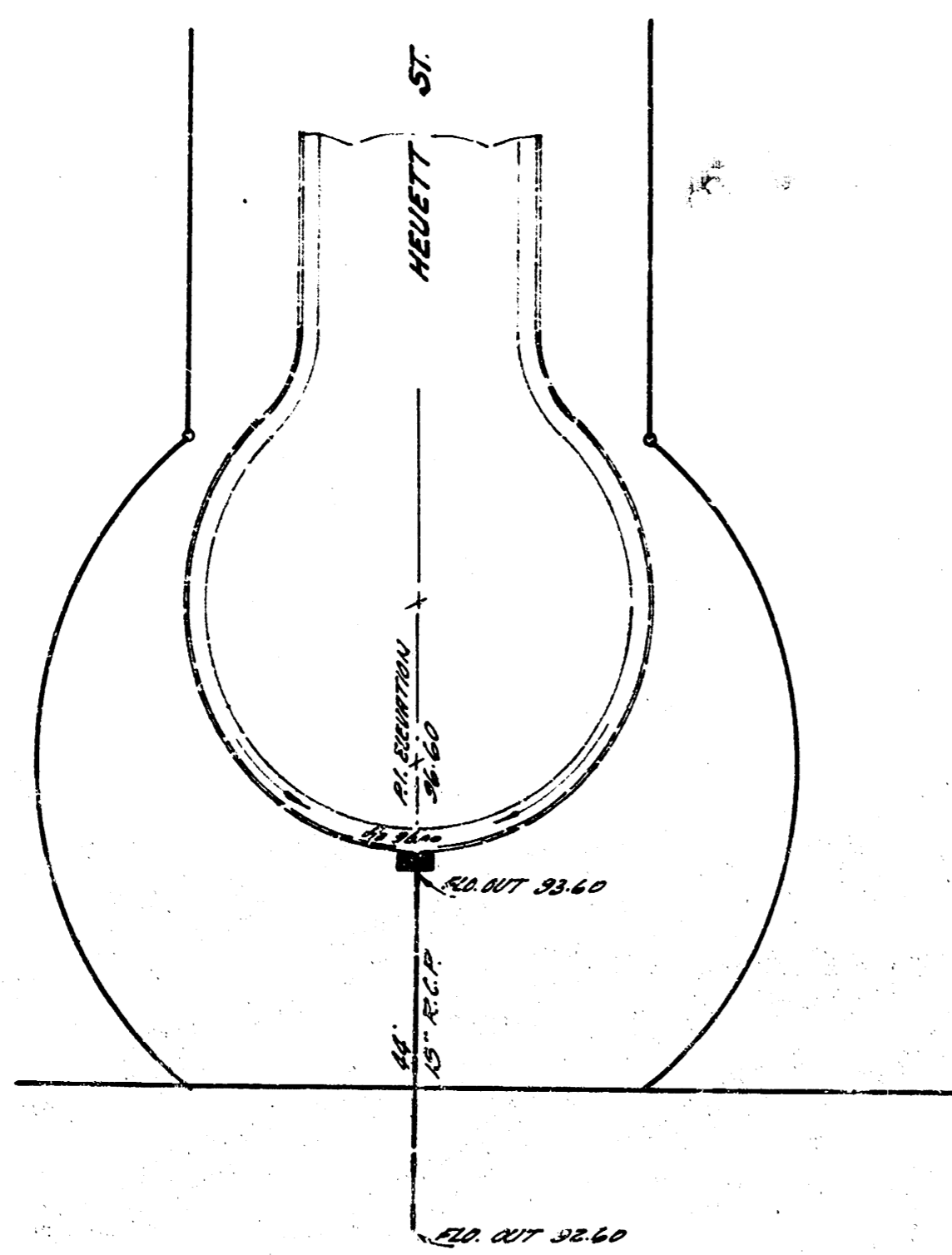


MERIDIAN AVE.

PROJ. NO. C16-79 & C16-80

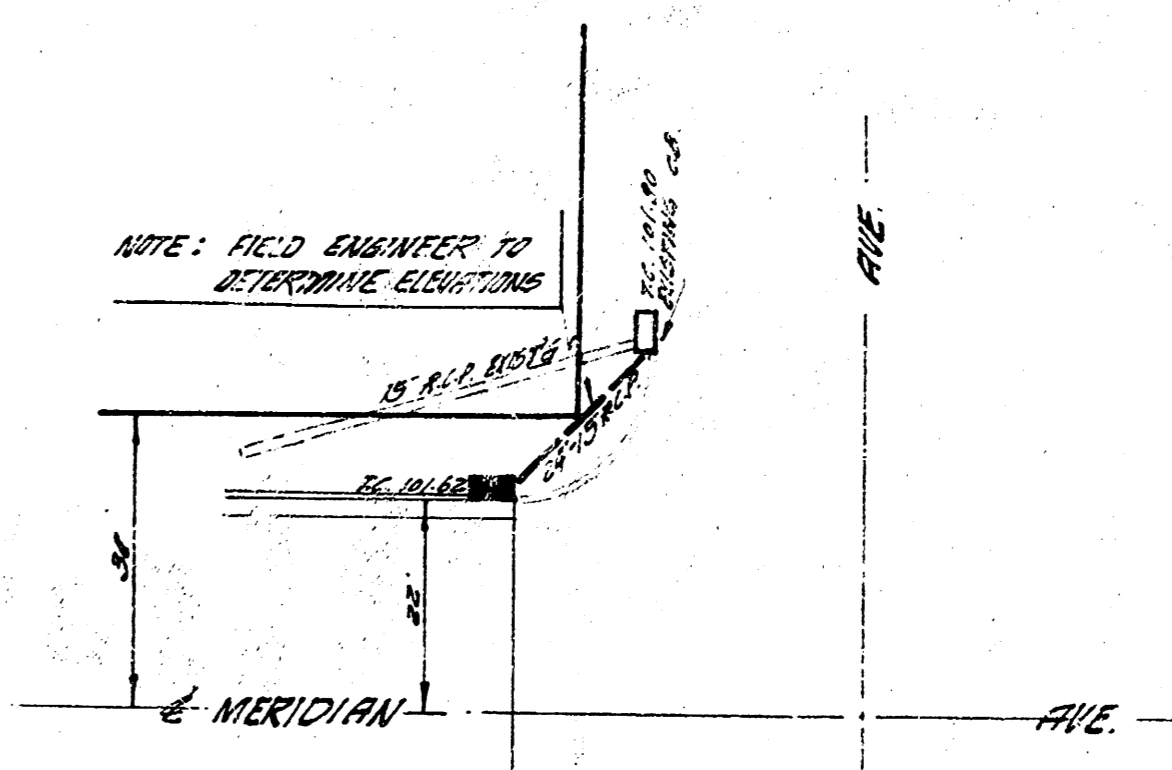
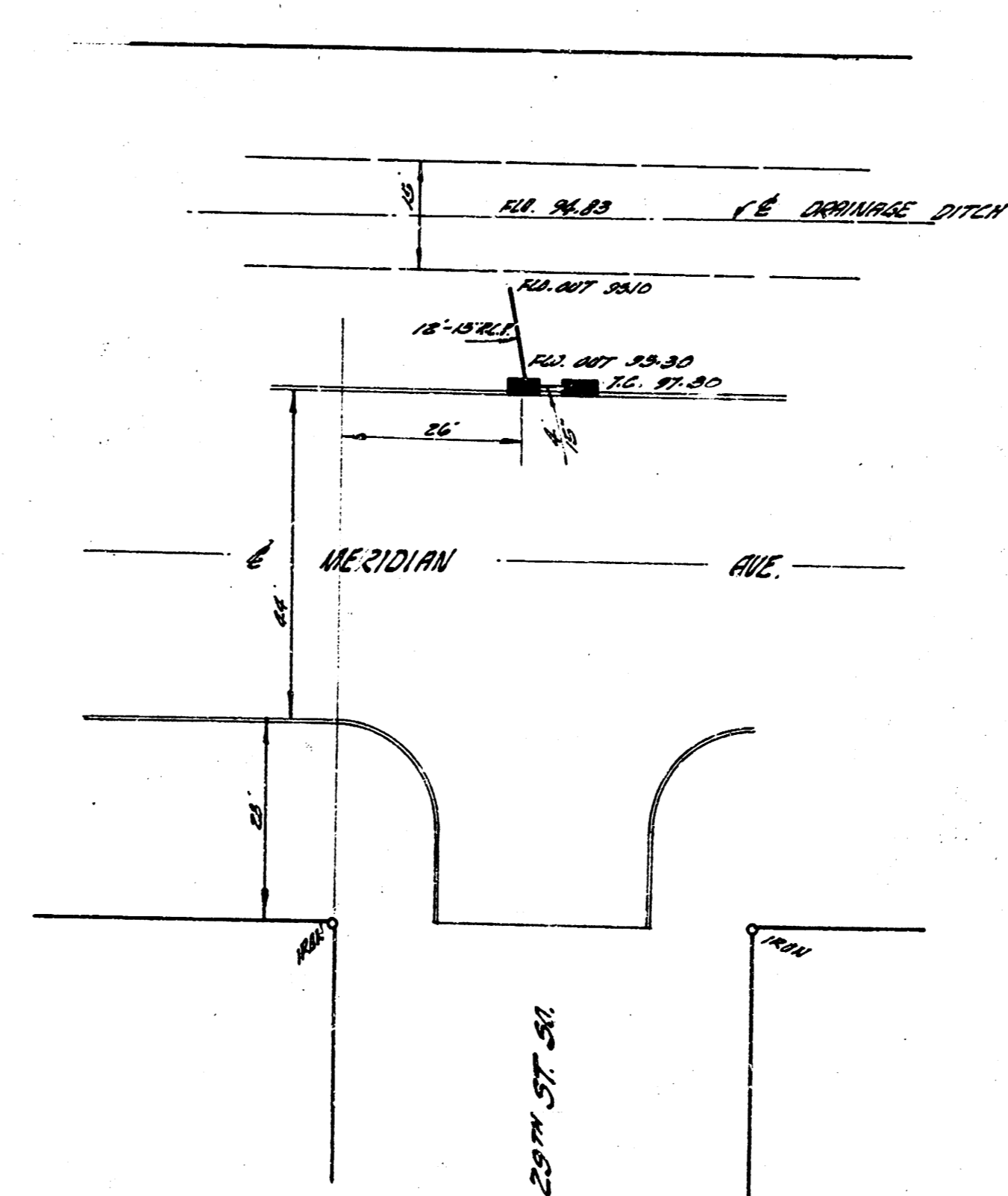
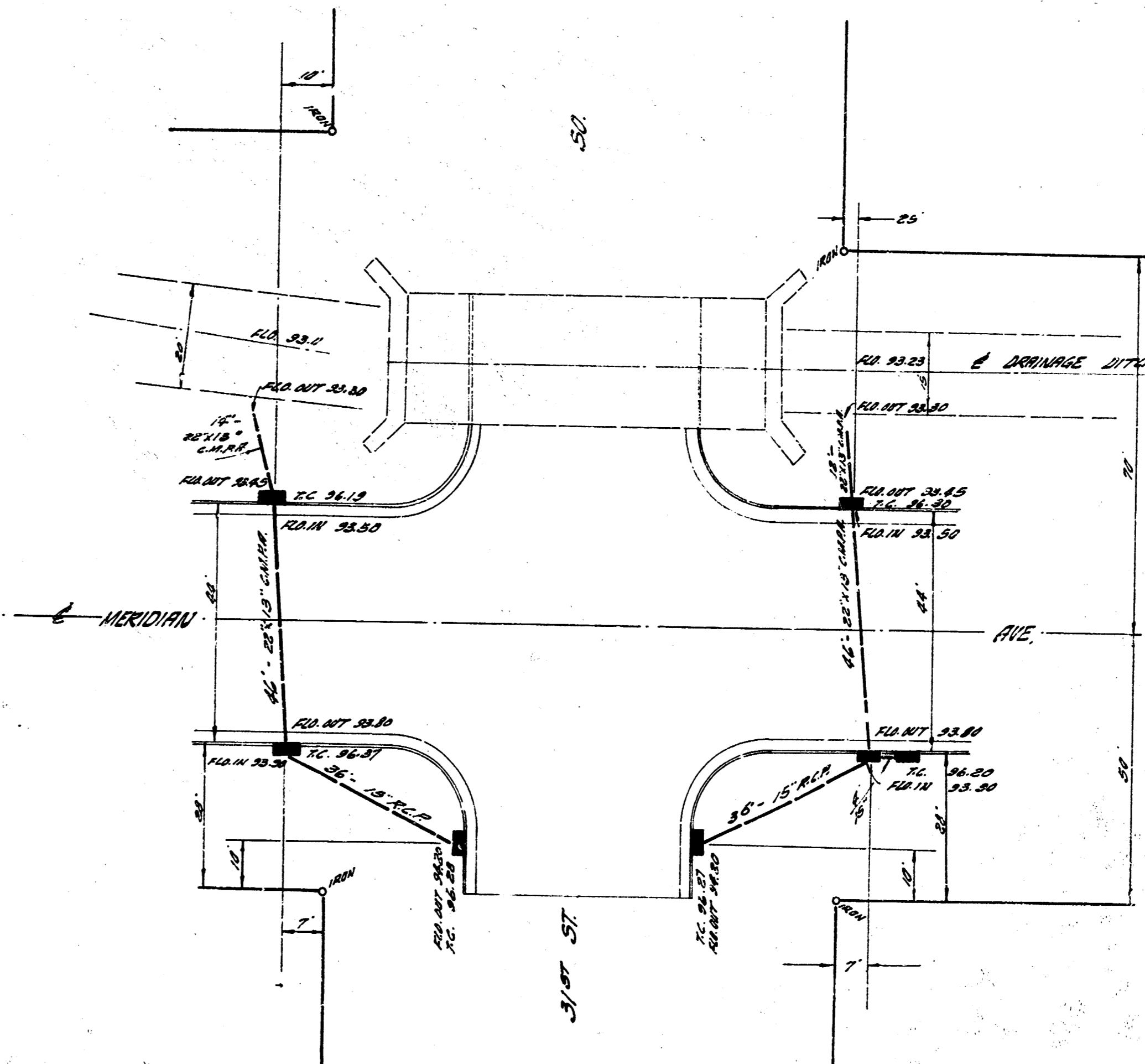


NOTE: 6" DIA. PIPE, 6" THICK WITH 6" BRICK LINING AND AT EACH OUTFALL. BENCH MARK ON GROUND WITH DISTANCE TO BE SHOWN IN SQUARE FEET. 10'-0" AND TYPED THEREON TO BE INCLUDED IN ALL PAGES OF PAPER. CHANGING WATER PIPE TO BE 16" DIA. BIRMINGHAM CASTED WITH BIRMINGHAM PATED IRON, AND GALVANIZED.



Scale 1" = 20'

- B.M. 81.60 U.S.S. 510 BEACH ON S.W. COR. MERIDIAN & 31st ST. S.D.
- B.M. 81.61 U.S.S. 510 31st ST. S.D. AND MERIDIAN
- B.M. 81.62 R. W. RITCHIE ALL CORNER S.D. E. CARD RICHMOND
- B.M. 82.87 N.E. COR. CANT. TRENCH EAST SIDE OF NO. 25.03 W. 31st ST. S.D.
- B.M. 81.89 R.R. SPIKE IN SIDE BELL PINE E. SIDE MERIDIAN
- B.M. 81.88 N.E. COR. MERIDIAN & BIRMINGHAM RD.
- B.M. 82.66 NEW CITY ST. ON S.E. COR. MERIDIAN & PRINCEE



NOTE: FIELD ENGINEER TO INTERPRET ELEVATIONS

INCIDENTAL DRAINAGE
MERIDIAN AVE.
PROP. NO. C 16-29

15