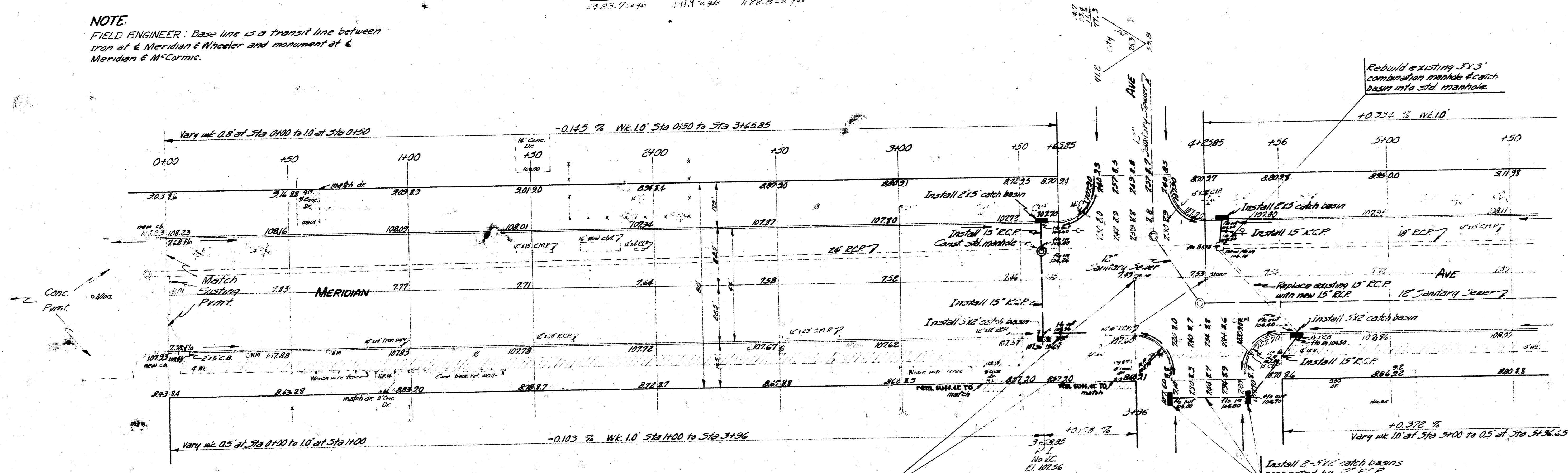
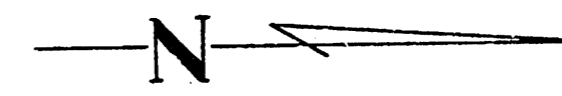


B.M. 108.78 Spike on W.S.P.P. N.E. cor. Meridian & Dooley
 B.M. 109.89 Spike on W.S.P.P. S.E. cor. Meridian & Walker
 B.M. 110.19 Spike on W.S.P.P. N.E. cor. Meridian & Irving
 B.M. 108.85 Standard S.E. cor. Meridian & M^cCormick

NOTE:
 FIELD ENGINEER: Base line is a transit line between
 iron at E Meridian & Wheeler and monument at E
 Meridian & M^cCormick.

Elevation		Fill	
Prop	Old	Prop	Old
2297.9	151.4	1552.7	0
100 229.8	100	14 152.1	0
2327.7	111.9	1478.8	14

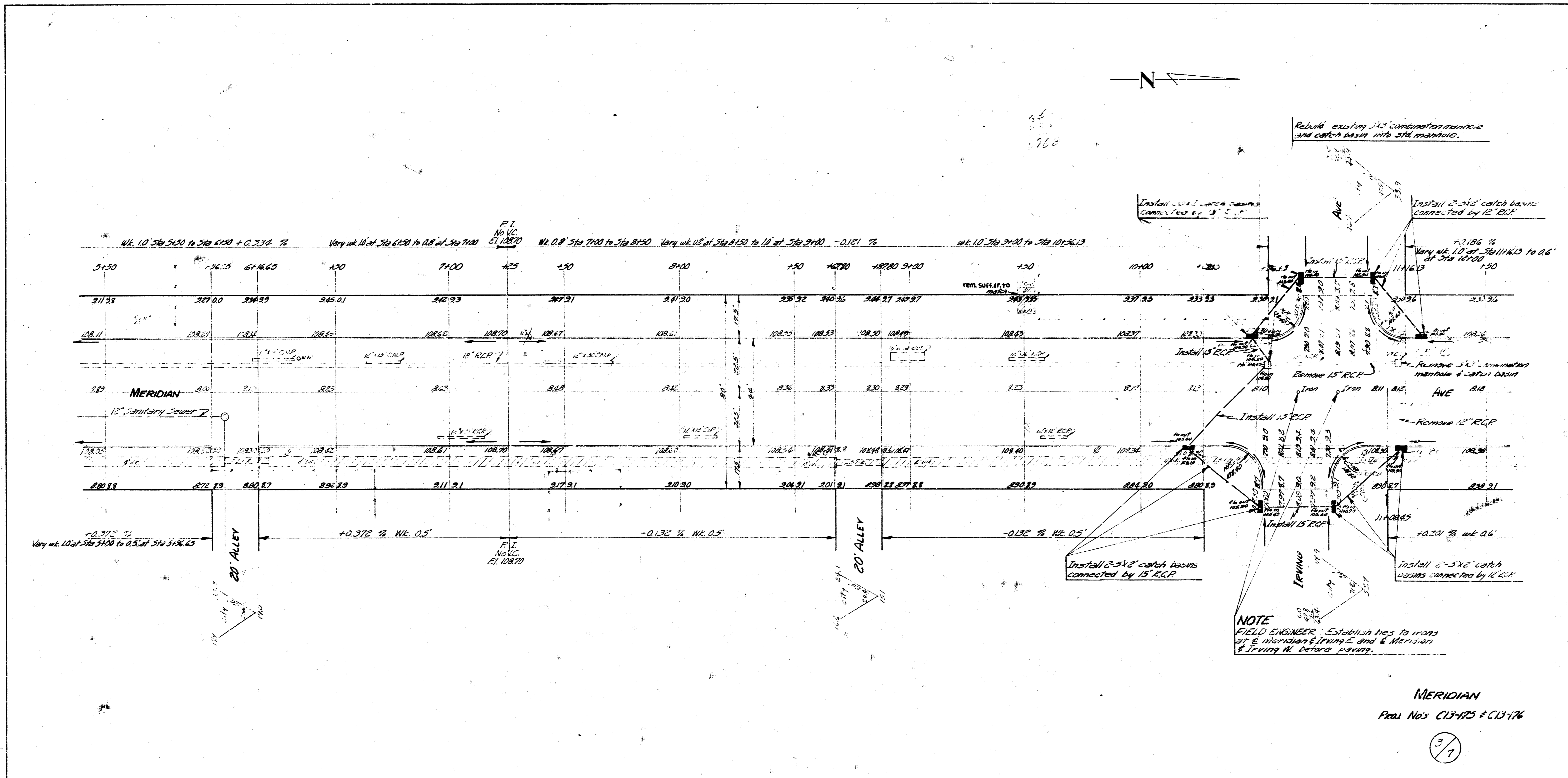


NOTE:
 FIELD ENGINEER & CONTRACTOR: All entrance pipes
 are to be disposed of in accordance with dirt speckers
 instructions.

NOTE:
 FIELD ENGINEER: Establish ties to stones
 at E Meridian & Walker W. and E Meridian & M^cCormick E.
 before paving.

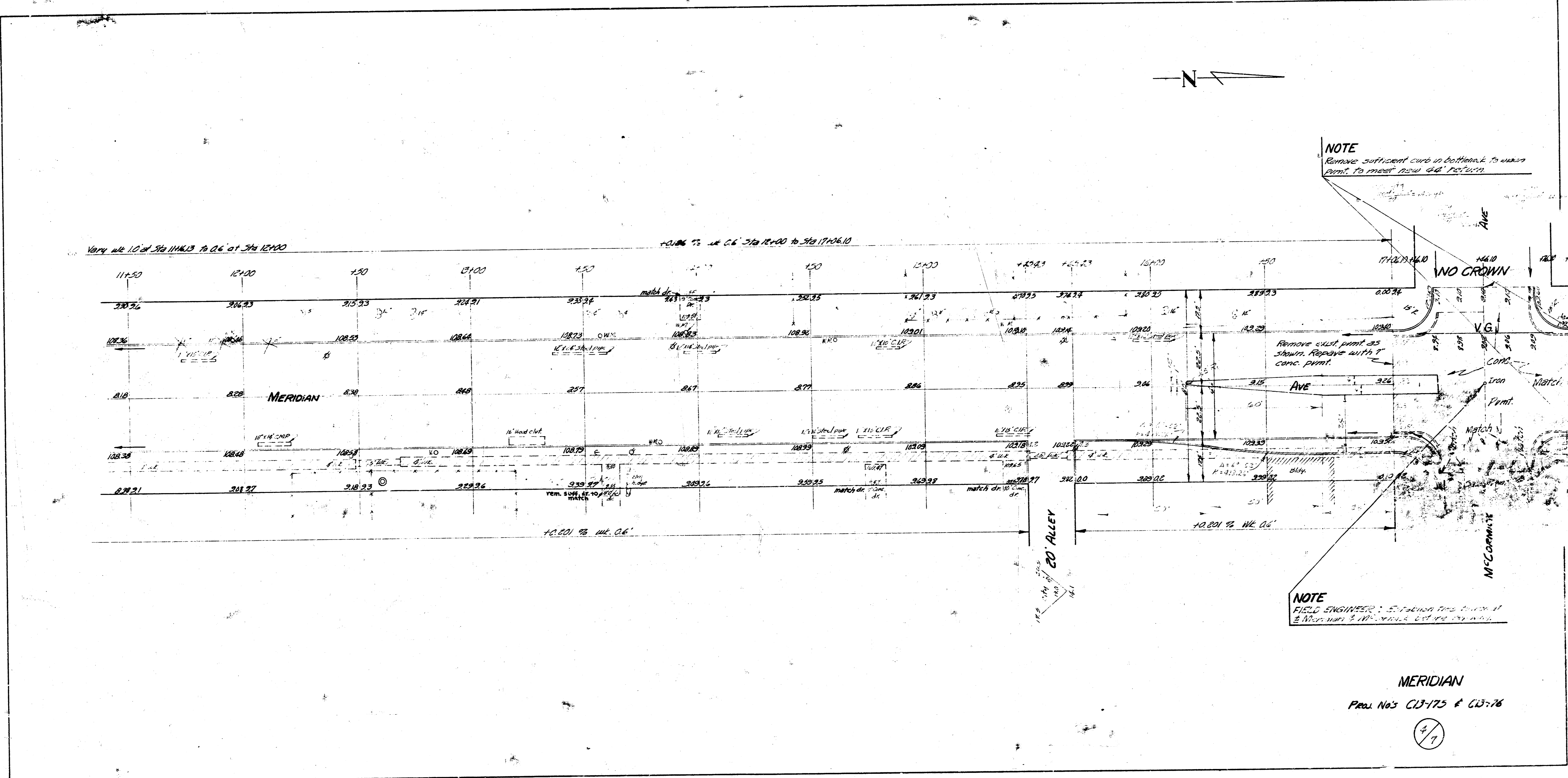
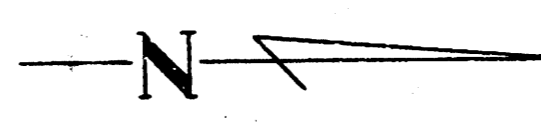
MERIDIAN
 N.L. DOOLEY TO S.L. M^cCORMICK
 30' CONC. & CURB WIDEN TO 44'
 CITY OF WICHITA KANSAS
 B.E. SMITH CITY ENGINEER
 JUNE 1955 Proj. Nos. C13-175 & C13-176





MERIDIAN
 Proj. Nos. C13-175 & C13-176

3/7

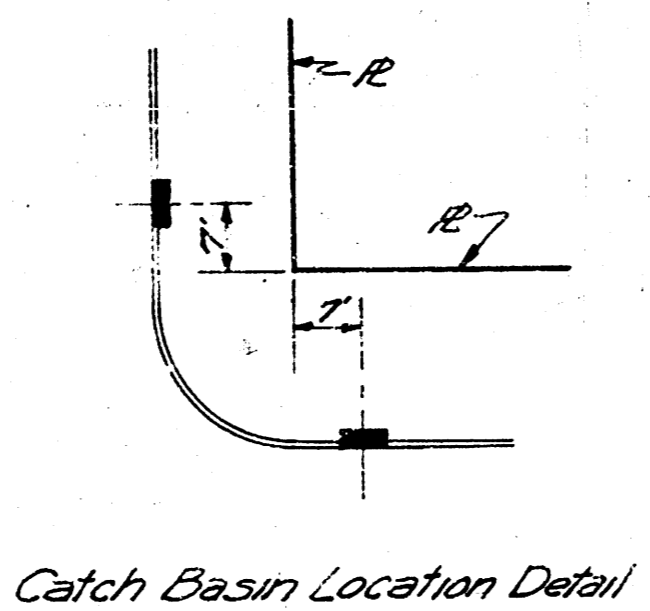
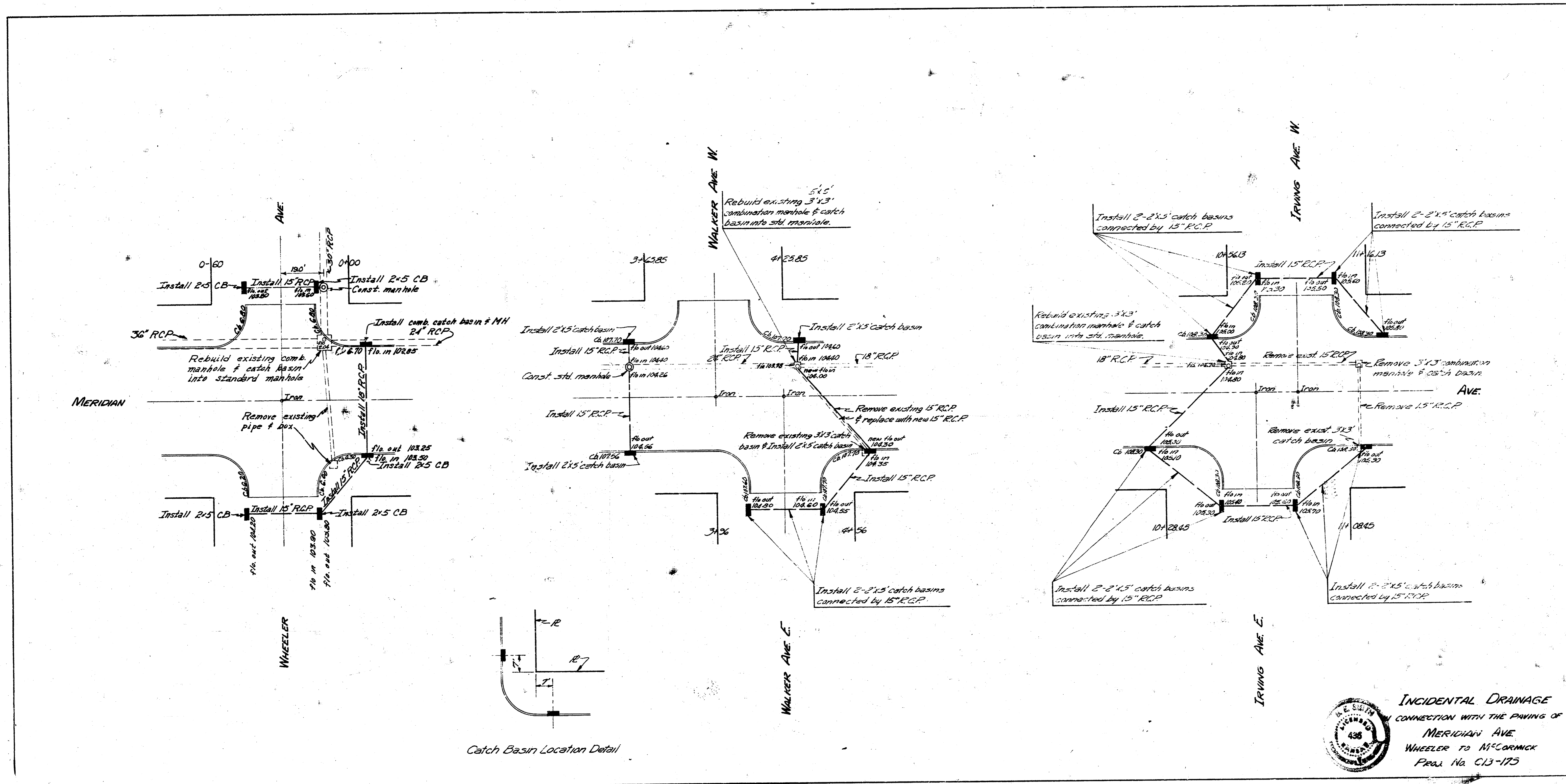


NOTE
Remove sufficient curb in bottom left to make
pvt. to meet new 40' 10" curb

NOTE
FIELD ENGINEER: E. T. ...
McClannon St. ...

MERIDIAN
Proj. No's C13-75 & C13-76

4/7



INCIDENTAL DRAINAGE
 CONNECTION WITH THE PAVING OF
 MERIDIAN AVE
 WHEELER TO MCCORMICK
 PROJ. No. C13-175